



Enabling Office 365 Services



Exam Ref

70-347

Orin Thomas

Exam Ref 70-347 Enabling Office 365 Services

Orin Thomas

PUBLISHED BY
Microsoft Press
A Division of Microsoft Corporation
One Microsoft Way
Redmond, Washington 98052-6399

Copyright © 2015 by Orin Thomas

No part of the contents of this book may be reproduced or transmitted in any form or by any means without the written permission of the publisher.

Library of Congress Control Number: 2015936019
ISBN: 978-1-5093-0067-9

Printed and bound in the United States of America.

First Printing

Microsoft Press books are available through booksellers and distributors worldwide. If you need support related to this book, email Microsoft Press Book Support at mssinput@microsoft.com. Please tell us what you think of this book at <http://aka.ms/tellpress>.

This book is provided “as-is” and expresses the author’s views and opinions. The views, opinions and information expressed in this book, including URL and other Internet Web site references, may change without notice.

Some examples depicted herein are provided for illustration only and are fictitious. No real association or connection is intended or should be inferred.

Microsoft and the trademarks listed at <http://www.microsoft.com> on the “Trademarks” Web page are trademarks of the Microsoft group of companies. All other marks are property of their respective owners.

Acquisitions Editor: Karen Szall

Developmental Editor: Karen Szall

Editorial Production: Troy Mott, Ellie Volckhausen

Technical Reviewers: Mike Toot; Technical Review services provided by Content Master, a member of CM Group, Ltd.

Copyeditor: Eryn Leavens

Indexer: Julie Grady

Cover: Twist Creative • Seattle

Contents at a glance

	<i>Introduction</i>	<i>xi</i>
	<i>Preparing for the exam</i>	<i>xv</i>
CHAPTER 1	Manage clients and end-user devices	1
CHAPTER 2	Provision SharePoint Online site collections	81
CHAPTER 3	Configure Exchange Online and Skype for Business Online for end users	147
CHAPTER 4	Plan for Exchange Online and Skype for Business Online	229
	<i>Index</i>	<i>319</i>

Contents

Introduction	xi
<i>Microsoft certifications</i>	<i>xi</i>
<i>Free ebooks from Microsoft Press</i>	<i>xii</i>
<i>Errata, updates, & book support</i>	<i>xii</i>
<i>We want to hear from you</i>	<i>xii</i>
<i>Stay in touch</i>	<i>xiii</i>
<i>Preparing for the exam</i>	<i>xv</i>
Chapter 1 Manage clients and end-user devices	1
Objective 1.1: Manage user-driven client deployments	1
Restrict self-provisioning of Office 365 ProPlus	2
Office 365 and mobile devices	6
Manage activation	8
Office for Mac	13
Objective summary	23
Objective review	24
Objective 1.2: Manage IT deployments of Office 365 ProPlus	24
Manual deployment	25
Central deployment	29
Office Deployment Tool	30
Configuration.xml	32
Objective summary	35
Objective review	36

What do you think of this book? We want to hear from you!

Microsoft is interested in hearing your feedback so we can continually improve our books and learning resources for you. To participate in a brief online survey, please visit:

www.microsoft.com/learning/booksurvey/

Objective 1.3: Set up telemetry and reporting	36
Set up telemetry service	37
Telemetry Dashboard details	57
Configure Telemetry Agent through registry	59
Report user issues	59
Objective summary	62
Objective review	63
Objective 1.4: Plan for Office clients	64
Outlook client	64
Skype for Business Online client	67
Office on Demand	68
Office Web Apps	69
Click-to-Run vs. MSI	70
Objective summary	73
Objective review	74
Answers.	75
Objective 1.1: Thought experiment	75
Objective 1.1: Review	75
Objective 1.2: Thought experiment	76
Objective 1.2: Review	76
Objective 1.3: Thought experiment	77
Objective 1.3: Review	77
Objective 1.4: Thought experiment	78
Objective 1.4: Review	78

Chapter 2 Provision SharePoint Online site collections 81

Objective 2.1: Configure external user sharing	81
Understanding external users	82
Enabling external user sharing globally	83
Enabling external user sharing per site collection	86
Sharing with external users	88
Removing external user access	93
Objective summary	96
Objective review	97

Objective 2.2: Create SharePoint site collection	98
Understanding site collection administrators	99
Understanding resource quotas	100
Using SharePoint Online Public Websites	102
Setting storage quota for site collection	103
Managing site collections	109
Objective summary	116
Objective review	117
Objective 2.3: Plan a collaboration solution.	118
Using newsfeeds and Yammer	119
Documenting coauthoring	122
Using OneDrive for Business	126
Understanding the App Store	134
Understanding Enterprise eDiscovery	135
Objective summary	139
Objective review	140
Answers.	142
Objective 2.1: Thought experiment	142
Objective 2.1: Review	142
Objective 2.2: Thought experiment	143
Objective 2.2: Review	143
Objective 2.3: Thought experiment	145
Objective 2.3: Review	145

Chapter 3 Configure Exchange Online and Skype for Business Online for end users 147

Objective 3.1: Configure additional email addresses for users.	147
Managing email addresses	148
Managing SIP addresses	158
Objective summary	166
Objective review	166

Objective 3.2: Create and manage external contacts, resources, and groups	167
Delegating permissions	167
Creating shared mailboxes	175
Managing resource mailboxes	177
Managing external contacts	183
Managing distribution groups	185
Objective summary	194
Objective review	195
Objective 3.3: Configure personal archive policies	196
Enabling personal archive for mailboxes	196
Understanding retention tags and retention policies	201
Objective summary	213
Objective review	214
Objective 3.4: Configure Skype for Business Online end-user communication settings	215
Configuring presence	215
Configuring external communication	216
Configuring user options	220
Objective summary	222
Objective review	223
Answers	224
Objective 3.1: Thought experiment	224
Objective 3.1: Review	224
Objective 3.2: Thought experiment	225
Objective 3.2: Review	225
Objective 3.3: Thought experiment	226
Objective 3.3: Review	226
Objective 3.4: Thought experiment	227
Objective 3.4: Review	228

Chapter 4 Plan for Exchange Online and Skype for Business Online	229
Objective 4.1: Manage anti-malware and anti-spam policies	229
Anti-malware policies	230
Connection filter policies	239
Spam filter policies	242
Outbound spam policy	254
Quarantine	256
Objective summary	259
Objective review	260
Objective 4.2: Recommend a mailbox migration strategy	262
Remote move migration method	262
Staged migration method	264
Cutover migration method	266
IMAP migration	268
Migration comparison	270
Objective summary	271
Objective review	271
Objective 4.3: Plan for Exchange Online	272
Plan client requirements for archive	273
In-place hold and litigation hold	278
Configure OWA access	293
Configure ActiveSync	295
Objective summary	299
Objective review	300
Objective 4.4: Manage Skype for Business global external communications settings	301
Manage external communication and domains	301
Manage Skype consumer connectivity	304
Customize meeting invitations	305
Disable push notifications	306
Objective summary	308
Objective review	309

Answers	311
Objective 4.1: Thought experiment	311
Objective 4.1: Review	311
Objective 4.2: Thought experiment	314
Objective 4.2: Review	314
Objective 4.3: Thought experiment	315
Objective 4.3: Review	316
Objective 4.4: Thought experiment	317
Objective 4.4: Review	317
<i>Index</i>	319

What do you think of this book? We want to hear from you!

Microsoft is interested in hearing your feedback so we can continually improve our books and learning resources for you. To participate in a brief online survey, please visit:

www.microsoft.com/learning/booksurvey/

Introduction

The 70-347 exam deals with advanced topics that require candidates to have an excellent working knowledge of Office 365, Exchange Online, SharePoint Online, and Skype for Business Online. Some of the exam comprises topics that even experienced Office 365, Exchange Online, SharePoint Online, and Skype for Business Online administrators may rarely encounter unless they are consultants who deploy new Office 365 tenancies on a regular basis.

Candidates for this exam are Information Technology (IT) Professionals who want to validate their advanced Office 365, Exchange Online, SharePoint Online, and Skype for Business Online management skills, configuration skills, and knowledge. To pass this exam, candidates require a strong understanding of how to manage and configure Office 365 clients and user devices, provision SharePoint Online site collections, configure Exchange Online and Skype for Business Online for users, and manage, migrate to, and administer Exchange Online and Skype for Business Online. To pass, candidates require a thorough theoretical understanding, as well as meaningful practical experience implementing the technologies involved.

This book covers every exam objective, but it does not cover every exam question. Only the Microsoft exam team has access to the exam questions themselves and Microsoft regularly adds new questions to the exam, making it impossible to cover specific questions. You should consider this book a supplement to your relevant real-world experience and other study materials. If you encounter a topic in this book that you do not feel completely comfortable with, use the links you'll find in text to find more information and take the time to research and study the topic. Great information is available on TechNet, through MVA courses, and in blogs and forums.

Microsoft certifications

Microsoft certifications distinguish you by proving your command of a broad set of skills and experience with current Microsoft products and technologies. The exams and corresponding certifications are developed to validate your mastery of critical competencies as you design and develop, or implement and support, solutions with Microsoft products and technologies both on-premises and in the cloud. Certification brings a variety of benefits to the individual and to employers and organizations.

MORE INFO ALL MICROSOFT CERTIFICATIONS

For information about Microsoft certifications, including a full list of available certifications, go to <http://www.microsoft.com/learning/en/us/certification/cert-default.aspx>.

Free ebooks from Microsoft Press

From technical overviews to in-depth information on special topics, the free ebooks from Microsoft Press cover a wide range of topics. These ebooks are available in PDF, EPUB, and Mobi for Kindle formats, and are ready for you to download at:

<http://aka.ms/mspressfree>

Check back often to see what is new!

Errata, updates, & book support

We've made every effort to ensure the accuracy of this book and its companion content. You can access updates to this book—in the form of a list of submitted errata and their related corrections—at:

<http://aka.ms/ER347/errata>

If you discover an error that is not already listed, please submit it to us at the same page.

If you need additional support, email Microsoft Press Book Support at mspinput@microsoft.com.

Please note that product support for Microsoft software and hardware is not offered through the previous addresses. For help with Microsoft software or hardware, go to <http://support.microsoft.com>.

We want to hear from you

At Microsoft Press, your satisfaction is our top priority, and your feedback our most valuable asset. Please tell us what you think of this book at:

<http://aka.ms/tellpress>

The survey is short, and we read every one of your comments and ideas. Thanks in advance for your input!

Stay in touch

Let's keep the conversation going! We're on Twitter: <http://twitter.com/MicrosoftPress>.

Preparing for the exam

Microsoft certification exams are a great way to build your resume and let the world know about your level of expertise. Certification exams validate your on-the-job experience and product knowledge. Although there is no substitute for on-the-job experience, preparation through study and hands-on practice can help you prepare for the exam. We recommend that you augment your exam preparation plan by using a combination of available study materials and courses. For example, you might use the Exam ref and another study guide for your “at home” preparation, and take a Microsoft Official Curriculum course for the classroom experience. Choose the combination that you think works best for you.

Note that this Exam Ref is based on publicly available information about the exam and the author’s experience. To safeguard the integrity of the exam, authors do not have access to the live exam.

Provision SharePoint Online site collections

SharePoint Online allows collaboration for people within an organization, and also allows collaboration with people who are external to the organization. For many organizations, SharePoint Online has taken the place of the traditional shared file server when it comes to sharing documents. Understanding how to configure and manage SharePoint Online site collections is critical for an Office 365 administrator. Administrators must ensure that resources are externally shared when appropriate, and that access to resources is restricted when required.

Objectives in this chapter:

- Objective 2.1: Configure external user sharing
- Objective 2.2: Create SharePoint site collection
- Objective 2.3: Plan a collaboration solution

Objective 2.1: Configure external user sharing

This objective deals with the settings related to allowing people external to your organization's Office 365 tenancy access to content stored within SharePoint Online. There are a variety of sharing options, from allowing read and edit access to people with Microsoft accounts, to allowing read and edit access to anyone who has the correct URL for a document.

This objective covers the following topics:

- Enable external user sharing globally
- Enable external user sharing per site collection
- Share with external users
- Remove external user access

Understanding external users

External users are people who need to collaborate with people in your organization using content hosted on SharePoint Online, but who haven't been provisioned with an organizational Office 365 or SharePoint Online license.

The use rights available to external users depend on the features available to the SharePoint Online tenancy with which they will collaborate. For example, if your organization has an E3 Enterprise Plan, and a SharePoint site uses enterprise features, the external user will be able to use and view those enterprise features.

External users can perform the following tasks:

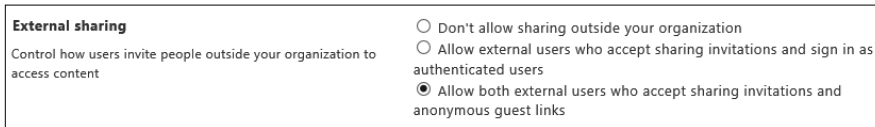
- Can use Office Online to view and edit documents in the browser. Can use their own version of Office to interact with content hosted in SharePoint Online, but are not eligible for licenses to the tenancy's Office 365 Office ProPlus software.
- Perform tasks on the site commensurate with their permission level. For example, adding an external user to the Members group grants that user Edit permissions. They will be able to add, edit, and delete lists, list items, and documents.
- View other site content, including navigating to subsites to which they have been invited, and view site feeds.

External users are restricted from being able to perform the following tasks:

- Create personal sites
- Edit their profiles
- View the company-wide newsfeed
- Add storage to the tenant storage pool
- Enact searches against "everything" or access the Search Center
- Access site mailbox
- Access PowerBI features, including Power View, Power Pivot, Quick Explore, and Timeline Slicer
- Use eDiscovery
- Open downloaded documents protected by Azure Rights Management (it is still possible to open these documents using Office Online)
- Access SharePoint Online data connection libraries
- Use Excel Services features, such as Calculated Measures and Calculated Members, decoupled Pivot Tables and PivotCharts, Field List and Field support, filter enhancements, and Search Filters
- Use Visio Services

Enabling external user sharing globally

The external sharing options configured at the SharePoint Online tenancy level override those configured at the site collection level. You can configure the following global external sharing options shown in Figure 2-1:



External sharing
Control how users invite people outside your organization to access content

- Don't allow sharing outside your organization
- Allow external users who accept sharing invitations and sign in as authenticated users
- Allow both external users who accept sharing invitations and anonymous guest links

FIGURE 2-1 External Sharing settings

- Don't Allow Sharing Outside Your Organization.
 - Choosing this option prevents all users on all sites within the SharePoint Online tenancy from sharing sites or content with external users.
- Allow External Users Who Accept Sharing Invitations And Sign In As Authenticated Users.
 - Choosing this option requires external users who have invitations to view content or sites to sign in with a Microsoft account, such as an Outlook.com account.
 - Site owners and users with Full Control permissions are able to share sites with external users.
 - Site owners and users can choose to allow external users View or Edit permissions on documents.
 - All external users must sign in with a Microsoft account before they can access content.
 - Invitations to view content can only be redeemed once, and then are tied to the Microsoft account used for access. After an invitation has been used, it cannot be used by someone else to gain access with a separate set of Microsoft account privileges.
- Allow Both External Users Who Accept Sharing Invitations And Guest Links.
 - Choose this option if you want to allow content to be shared with people who sign in with Microsoft accounts as well as allow anonymous guest links. Anonymous guest links allow access without any form of authentication.
 - Site owners and users with Full Control permission are able to share sites with external users.
 - Site owners and users with Full Control permission are able to choose between requiring sign-in or sending an anonymous guest link when sharing documents.
 - When sharing a document, site owners and users can select between granting View and Edit permissions.
 - All external users will be required to sign in with a Microsoft account before accessing content.

- Anonymous links can be shared and forwarded, meaning that unauthorized people can be granted the permission assigned when the document is shared with the anonymous guest link.

To configure external user sharing for the SharePoint Online tenancy, perform the following steps:

1. Sign in to the Office 365 Admin Center with a user account that has SharePoint Online administrator privileges.
2. Under Admin, click SharePoint. This opens the SharePoint Admin Center.
3. In the SharePoint Admin Center, click Settings, as shown in Figure 2-2.

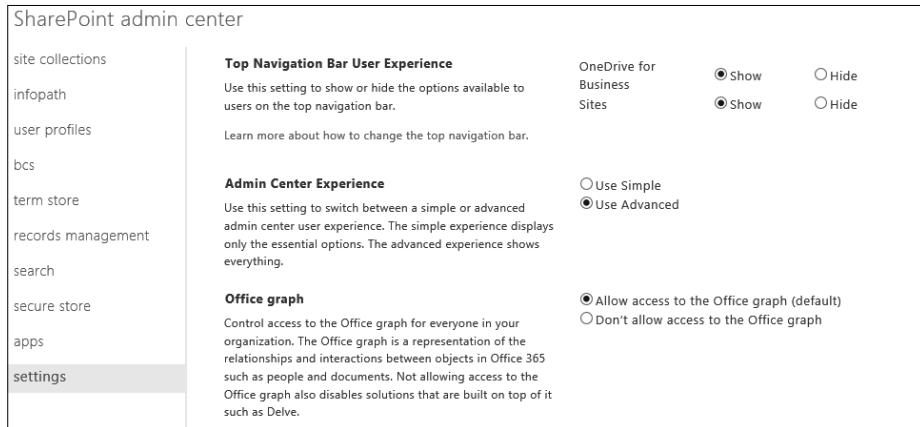


FIGURE 2-2 SharePoint Admin Center

4. Scroll down within the settings area until you get to the External Sharing section and choose between one of the three following options shown in Figure 2-3:
 - Don't Allow Sharing Outside Your Organization
 - Allow External Users Who Accept Sharing Invitations And Sign In As Authenticated Users
 - Allow Both External Users Who Accept Sharing Invitations And Anonymous Guest Links

<p>External sharing</p> <p>Control how users invite people outside your organization to access content</p>	<p><input type="radio"/> Don't allow sharing outside your organization</p> <p><input type="radio"/> Allow external users who accept sharing invitations and sign in as authenticated users</p> <p><input checked="" type="radio"/> Allow both external users who accept sharing invitations and anonymous guest links</p>
<p>Global Experience Version Settings</p> <p>Control which version of site collections can be created by end users, and whether users can upgrade them.</p>	<p><input type="radio"/> Allow creation of old version site collections, but prevent creation of new version site collections. Prevent opt-in upgrade to the new version site collections.</p> <p><input type="radio"/> Allow creation of old version site collections, and creation of new version site collections. Allow opt-in upgrade to the new version site collections.</p> <p><input checked="" type="radio"/> Prevent creation of old version site collections, but allow creation of new version site collections. Allow opt-in upgrade to the new version site collections.</p>
<p>Information Rights Management (IRM)</p> <p>Set IRM capabilities to SharePoint for your organization (requires Office 365 IRM service)</p>	<p><input type="radio"/> Use the IRM service specified in your configuration</p> <p><input checked="" type="radio"/> Do not use IRM for this tenant</p> <p><input type="button" value="Refresh IRM Settings"/></p>

FIGURE 2-3 External Sharing settings

Turning off external sharing has the following consequences:

- If you disable and then re-enable external sharing, external users who have been granted access to content will regain access.
- If you disable and then re-enable external sharing, site collections that had sharing enabled will have sharing re-enabled.
- If you want to block specific site collections from having sharing re-enabled, disable external sharing on a per site collection basis prior to re-enabling external sharing.
- When you disable external sharing on a specific site collection, any configured External User permissions for that site collection are permanently deleted.
- Turning off external sharing at the site collection level disables guest links, but does not remove them. To remove access to specific documents, you need to disable anonymous guest links.
- Changes made to external access do not occur immediately, and might take up to 60 minutes.

MORE INFO EXTERNAL SHARING

You can learn more about external sharing at <https://support.office.com/en-us/article/Manage-external-sharing-for-your-SharePoint-Online-environment-c8a462eb-0723-4b0b-8d0a-70feafe4be85>.

Enabling external user sharing per site collection

Only SharePoint Online administrators are able to make changes to the SharePoint Online tenancy's external user sharing settings. Site collection administrators are allowed to configure sharing settings on a per site collection basis as long as external user sharing is set to one of the following options:

- Allow External Users Who Accept Sharing Invitations And Sign In As Authenticated Users.
- Allow Both External Users Who Accept Sharing Invitations And Anonymous Guest Links

The sharing options at a site collection level are similar to those that are available at the SharePoint Online tenancy level, and are shown in Figure 2-4.

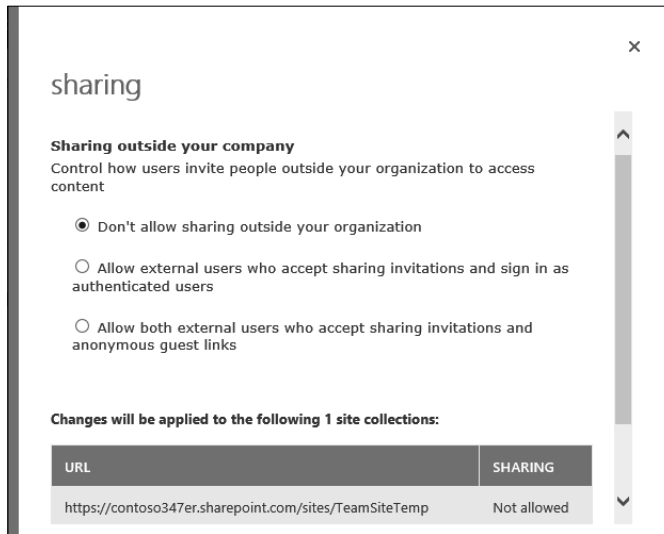


FIGURE 2-4 Site collection sharing

These options have the following properties:

- Don't Allow Sharing Outside Your Organization
 - Prevents all users on all sites in the collection from sharing sites or content with external users.
 - Users are unable to share content or sites with users who are not members of their organization's Office 365 tenancy.
 - If sharing had been enabled previously, any permissions assigned to external users will be deleted.
- Allow External Users Who Accept Sharing Invitations And Sign In As Authenticated Users

- Allow users with Microsoft accounts who have been sent invitations to access sites and content in a site collection.
- Site owners and users with Full permission can share sites and documents with external users who sign in with a Microsoft account.
- Invitations that are redeemed by external users are tied to the redeeming Microsoft account, and access cannot be shared with other Microsoft accounts.
- Allow Both External Users Who Accept Sharing Invitations And Anonymous Guest Links
 - Site owners and users with Full Control permissions are able to share sites and documents with external users.
 - Allows sites within a site collection that have been authenticated with Microsoft accounts to be shared with users.
 - Invitations that are redeemed by external users are tied to the redeeming Microsoft account. Access cannot be shared with other Microsoft accounts.
 - Site owners and users with Full Control permissions are able to share documents through an anonymous link.
 - When sharing documents with external users or through anonymous links, View or Edit permission can be assigned.
 - Anonymous links can be shared with the original sharer, having no control over which external parties access anonymously shared content after the guest link has been forwarded.

Settings configured at the SharePoint Online tenancy level determine those available at the individual site collection level. If sharing is only allowed for external users at the SharePoint Online tenancy level, the option to allow anonymous guest links to be sent at the site collection level will not be available. If sharing is blocked at the SharePoint Online tenancy level, then sharing will not be possible at the site collection level. Modifications to the external sharing settings for the My Site site collection apply to any existing personal sites as well as any personal sites created in the future.

To configure sharing at the site collection level, perform the following steps:

1. Sign in to the Office 365 Admin Center with a user account that has SharePoint Online administrator privileges.
2. Under Admin, click SharePoint. This will open the SharePoint Admin Center.
3. In the Site Collections area, select the site collection for which you want to configure sharing, and click Sharing in the Site Collections toolbar shown in Figure 2-5.

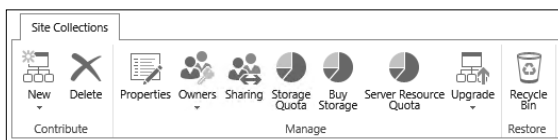


FIGURE 2-5 Site Collections

4. On the Sharing dialog box, shown in Figure 2-6, specify the type of sharing you want to enable, and click Save.

sharing

Sharing outside your company
Control how users invite people outside your organization to access content

Don't allow sharing outside your organization

Allow external users who accept sharing invitations and sign in as authenticated users

Allow both external users who accept sharing invitations and anonymous guest links

Changes will be applied to the following 1 site collections:

URL	SHARING
https://contoso347er.sharepoint.com/sites/TeamSiteTemp	Not allowed

Save Cancel

FIGURE 2-6 Sharing options

Sharing settings configured at the site collection level determine the sharing options available at the document level. If sending anonymous links is not allowed at the site collection level, it will not be allowed from a document hosted within a site in that collection.

MORE INFO SITE COLLECTION SHARING

You can learn more about sharing at the site collection level at <https://support.office.com/en-us/article/Manage-external-sharing-for-your-SharePoint-Online-environment-c8a462eb-0723-4b0b-8d0a-70feafe4be85>.

Sharing with external users

After sharing is appropriately configured at the SharePoint Online tenancy level and at the site collection level, there are three basic methods that allow you to share content with external users:

- Share an entire site and invite users to sign in using a Microsoft account (including Office 365 accounts from separate organizations, such as workplaces or schools).
- Share individual documents by inviting external users to sign in using a Microsoft account.

- Send users a guest link that allows users external to the organization access to each individual document that you want to share anonymously.

Sharing a site

To share a site with an external user, perform the following steps:

1. Sign in to Office 365 with an account that has permission to share the site. Select Sites from the list of My Apps as shown in Figure 2-7.

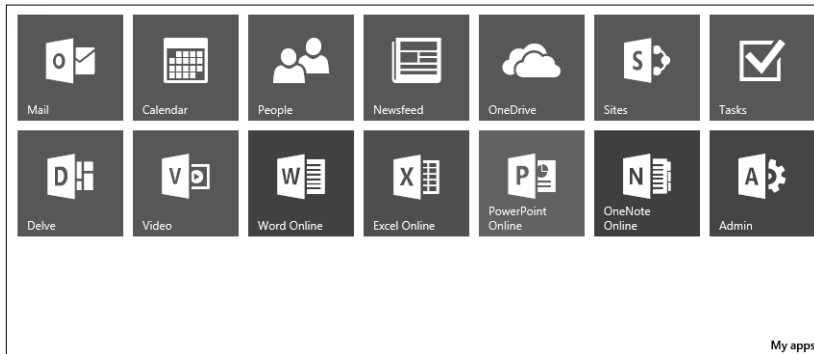


FIGURE 2-7 Office 365 Apps

2. In the list of sites, select the site that you want to share.
3. In the upper right-hand corner of the Site page, click Share, as shown in Figure 2-8.

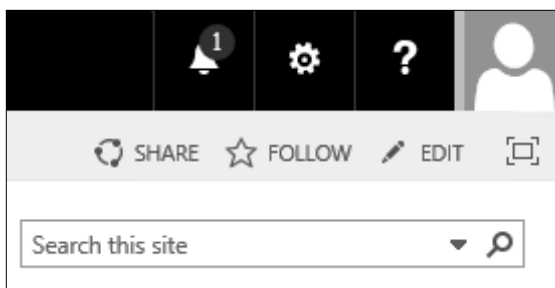


FIGURE 2-8 Share

4. On the Share Site dialog box, shown in Figure 2-9, provide the name of the person with whom you want to share the site, specify the permission level, and click Share. You can choose between the following levels:
 - Excel Services Viewers [View Only]
 - Team Site Members [Edit]
 - Team Site Owners [Full Control]
 - Team Site Visitors [Read]

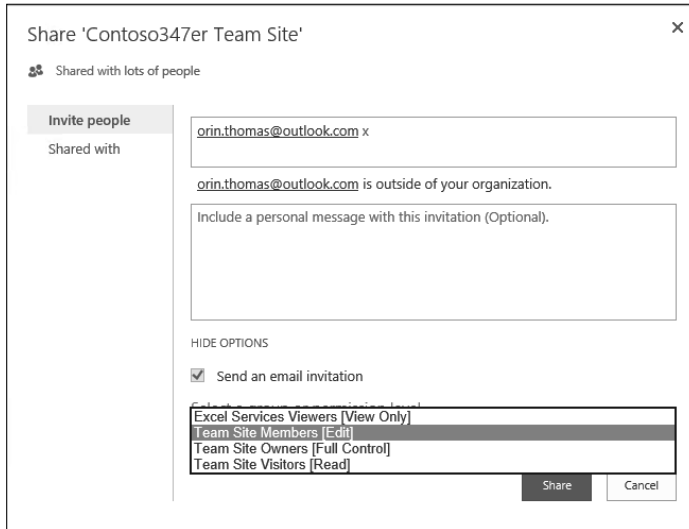


FIGURE 2-9 Team Site sharing

An invitation will automatically be sent to the person or people who you invited. If the invitation isn't accepted within seven days, it will expire. Users accepting an invitation must sign in with a Microsoft account, such as an Outlook.com or Hotmail.com account, or an Office 365 account.

You can determine which external users a SharePoint Online site collection has been shared with by performing the following steps:

1. Sign in to Office 365 with an account that has permission to share the site and select Sites from the list of My Apps.
2. In the list of sites, select the site that you want to share.
3. In the upper right-hand corner of the Site page, click Share, as shown in Figure 2-10.

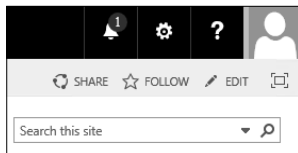


FIGURE 2-10 Share

4. On the Share Site dialog box, click Shared With, as shown in Figure 2-11. The dialog box will list all users with whom the site collection has been shared.

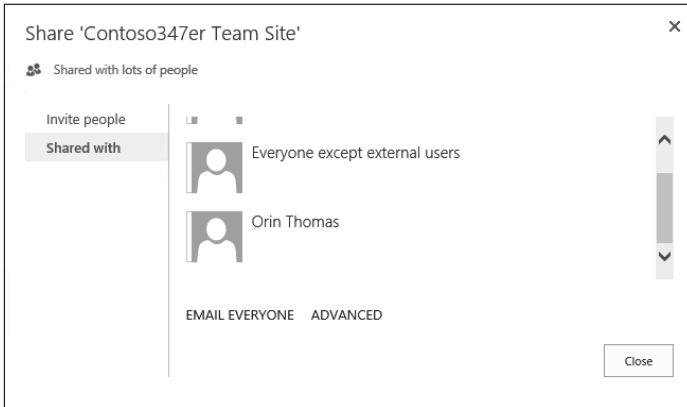


FIGURE 2-11 Shared With

Sharing a document

There are two ways to share a document: sharing with an external user who must authenticate and sharing through an anonymous guest link.

To share with an external user who must authenticate using a Microsoft account, which includes the option of using an Office 365 account, perform the following steps:

1. Sign in to Office 365 with an account that has permission to share the site, and select Sites from the list of My Apps.
2. In the list of sites, select the site that hosts the document that you want to share.
3. Next to the document that you want to share, click the ellipses and then click Share, as shown in Figure 2-12.

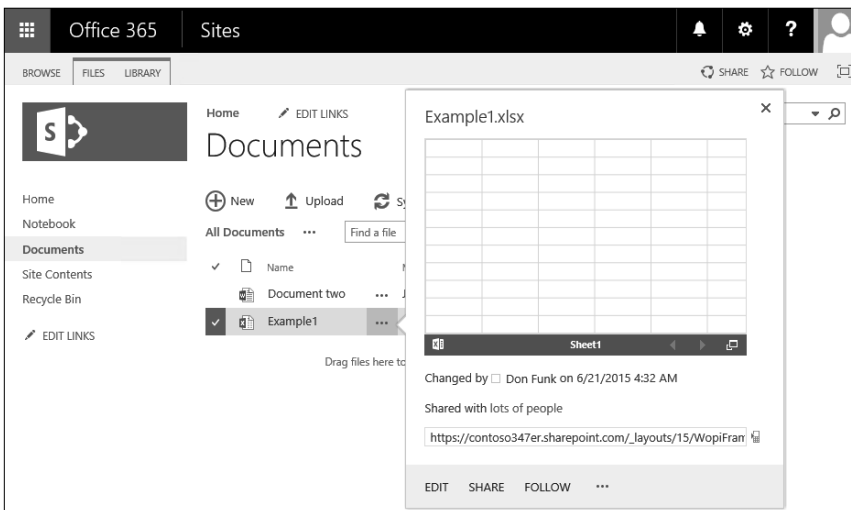


FIGURE 2-12 Share Document

4. On the Share page, select Invite People and then type the Microsoft account addresses of the people with whom you want to share the document. You can choose between the permissions Can Edit and Can View. Select the Require Sign-In check box to require the account be used to sign in. If this option is not selected, a link will be generated and forwarded to the email address provided. Figure 2-13 shows the document Example1 shared to the Microsoft account orin.thomas@outlook.com, with the permission that allows the user of that account to edit the document.

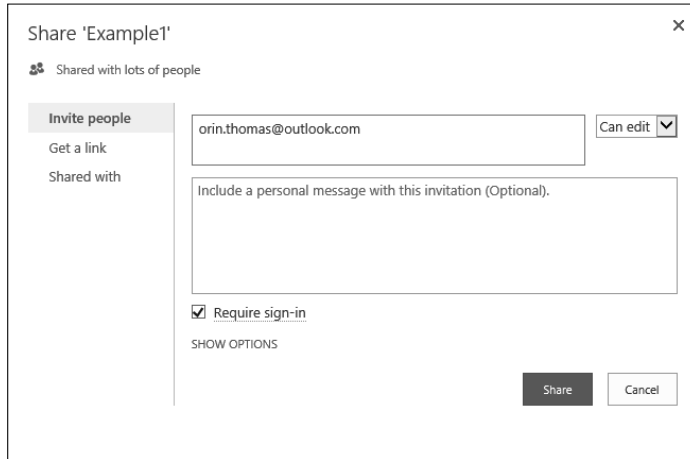


FIGURE 2-13 Share document

5. Click Share to share the document.

You can view the Shared With section of the Shared dialog box to view a list of users who have access to this shared document. Figure 2-14 shows the document Example1 shared with Orin Thomas.

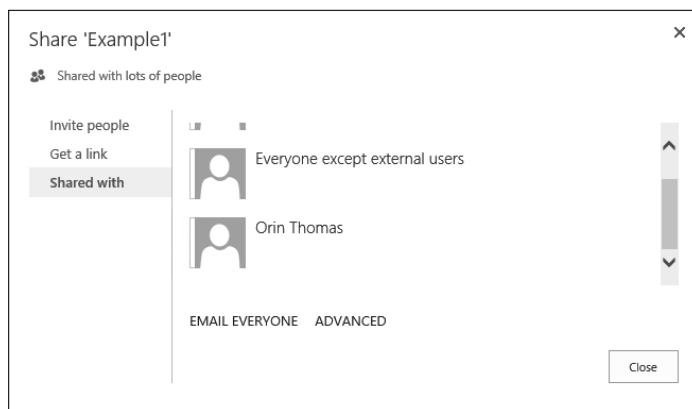


FIGURE 2-14 Shared With

The process of creating a shared link is similar. Sign in to Office 365, locate the document that you want to share, and then open the Sharing dialog box by clicking the ellipses next to the file and clicking Share. On the Get A Link section, you have the option of creating a View Only link, an Edit link, or both. Figure 2-15 shows a document where a View Only link and an Edit link have been created. You can click Disable on this dialog box to disable one or both links.

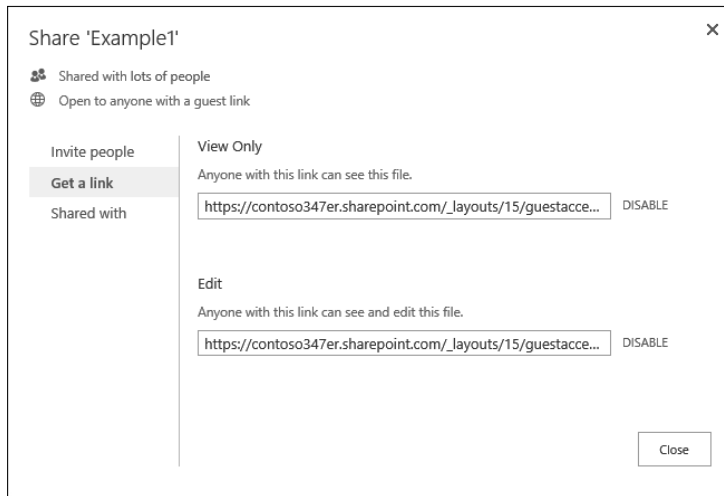


FIGURE 2-15 Get A Link

MORE INFO SHARE SITES OR DOCUMENTS WITH EXTERNAL USERS

You can learn more about sharing sites or documents with external users at <https://support.office.com/en-us/article/Share-sites-or-documents-with-people-outside-your-organization-80e49744-e30f-44db-8d51-16661b1d4232>.

Removing external user access

You can revoke external user access to a site only after a user has accepted their invitation. You can revoke access by removing the external user's permission to the site. To revoke access, perform the following steps:

1. Sign in to Office 365 with an account that has permission to share the site and select Sites from the list of My Apps.
2. In the list of sites, select the site that you want to share.
3. Select Settings, which is represented as a cogwheel, and then click Site Settings, as shown in Figure 2-16.

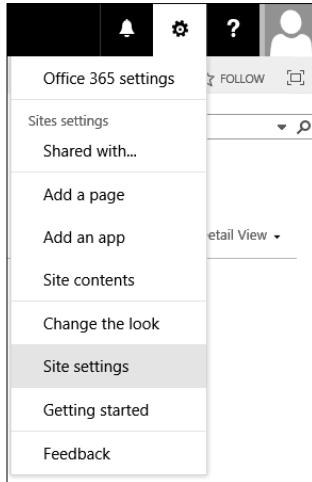


FIGURE 2-16 Site Settings

4. Under Users And Permissions, click People And Groups, as shown in Figure 2-17.

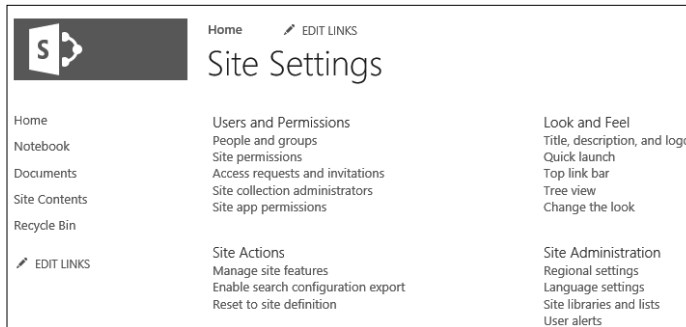


FIGURE 2-17 Site Settings

5. Select the external user from whom you want to revoke access. Figure 2-18 shows the Orin Thomas external user selected.

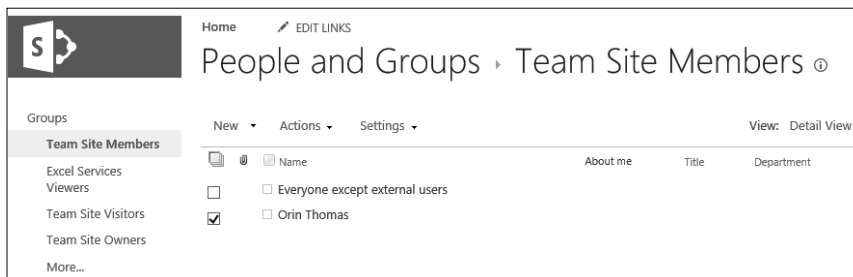


FIGURE 2-18 People And Groups

- From the Actions menu, click Remove Users From Group, as shown in Figure 2-19.

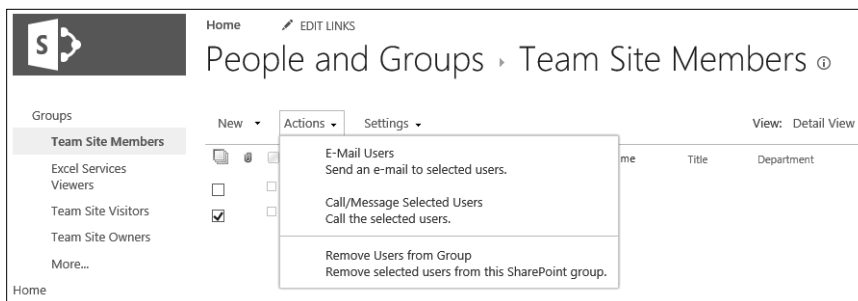


FIGURE 2-19 Remove Users From Group

- When prompted about removing users from the group, as shown in Figure 2-20, click OK.

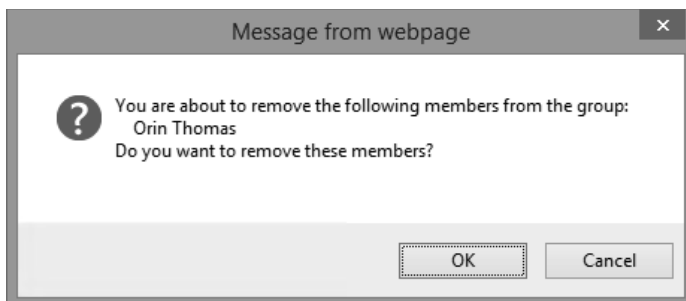


FIGURE 2-20 Confirmation message

There is no way, at the SharePoint Online tenancy level, to determine all of the sites to which an external user has been granted access. It is necessary to view the settings for individual sites to determine if a specific external user has been granted access to the site. There is also no method, at the SharePoint Online tenancy level, to determine which documents have been shared externally.

MORE INFO REVOKE USER ACCESS

You can learn more about revoking user access at <https://support.office.com/en-us/article/Share-sites-or-documents-with-people-outside-your-organization-80e49744-e30f-44db-8d51-16661b1d4232>.



EXAM TIP

Remember that the sharing settings configured at the SharePoint Online level will override the settings that can be configured at the site collection level.



Thought experiment

Removing external user access at Contoso

In this thought experiment, apply what you learned about this objective. You can find answers to these questions in the “Answers” section at the end of this chapter.

After performing an audit of how content was being shared from your organization’s SharePoint Online tenancy, management has decided that it will no longer allow users to share content with users anonymously. In the future, all content shared with external users can only be shared if the user has a Microsoft or an Office 365 account. Management is also concerned about one external user, Kim, who has had content shared with her across multiple site collections. Kim has recently started working for a competitor and management wants to remove her current access to information in your organization’s SharePoint Online site collections. With this information in mind, answer the following questions:

1. What’s the quickest method of stopping anonymous users from accessing SharePoint Online content?
2. What steps need to be taken to remove the external user’s access from site collections?

Objective summary

- External users are people with whom Office 365 SharePoint Online content can be shared.
- External users can authenticate with a Microsoft account, including an Office 365 account that is not part of the organization’s tenancy.
- At the global level, you can configure an option for block sharing to external users, allow external users who have authenticated with Microsoft, or allow users who have authenticated with a Microsoft account and who have been provided with an anonymous link.
- Site owners and users who have Full Control permissions on a site are able to share sites with external users.
- Invitations sent to external users remain valid for seven days.
- Sharing settings configured at the SharePoint Online tenancy level determine the sharing options available at the site collection level. If sharing is blocked at the tenancy level, it is not available at the site collection level.
- Sharing settings configured at the site collection level determine the sharing options available at the document level.

Objective review

Answer the following questions to test your knowledge of the information in this objective. You can find the answers to these questions and explanations of why each answer choice is correct or incorrect in the “Answers” section at the end of this chapter.

- 1.** How many days does an invitation to access shared content sent to an external user from an Office 365 SharePoint Site collection remain valid before it expires?
 - A.** 7 days
 - B.** 14 days
 - C.** 21 days
 - D.** 28 days

- 2.** You want to block users sharing links and require all external users accessing shared content to authenticate using a Microsoft account. Which of the following steps can you take to accomplish this goal with a minimum amount of administrative effort?
 - A.** Disable sharing at the SharePoint Online tenancy level
 - B.** Restrict sharing to authenticated users at the SharePoint Online tenancy level
 - C.** Restrict sharing to authenticated users in each site collection
 - D.** Disable sharing in each site collection

- 3.** You want to allow users in your organization’s Office 365 tenancy to email links that will allow anonymous access to specific documents hosted in a specific site collection. Which of the following settings must be configured to allow this to occur? (Choose two. Each answer forms part of a complete solution.)
 - A.** Configure the Allow Both External Users Who Accept Sharing Invitations And Anonymous Guest Links option at the site collection level
 - B.** Configure the Allow External Users Who Accept Sharing Invitations And Sign In As Authenticated Users option at the site collection level
 - C.** Configure the Allow External Users Who Accept Sharing Invitations And Sign In As Authenticated Users option at the SharePoint Online tenancy level
 - D.** Configure the Allow Both External Users Who Accept Sharing Invitations And Anonymous Guest Links option at the SharePoint Online tenancy level

- 4.** In most circumstances, you want to allow users in your organization to be able to send anonymous links to people outside your organization to documents hosted in site collections in your organization’s Office 365 SharePoint Online tenancy. However, you want to ensure that anonymous links can’t be used for documents hosted in a specific site collection. Documents in the site collection should be able to be shared with external users who have authenticated with a Microsoft account. With this in mind, which of the following settings should be configured to accomplish this goal? (Choose two. Each answer forms part of a complete solution.)
 - A.** Configure the Allow Both External Users Who Accept Sharing Invitations And Anonymous Guest Links option at the SharePoint Online tenancy level

- B. Configure the Allow External Users Who Accept Sharing Invitations And Sign In As Authenticated Users option at the SharePoint Online tenancy level
 - C. Configure the Allow External Users Who Accept Sharing Invitations And Sign In As Authenticated Users option at the site collection level for the specific site collection where you want to block anonymous links
 - D. Configure the Allow Both External Users Who Accept Sharing Invitations And Anonymous Guest Links option at the site collection level for the specific site collection where you want to block anonymous links
5. After sensitive documents were leaked from your organization, you want to block all sharing of content hosted in SharePoint Online to people external to your organization. Which of the following steps could you take to accomplish this goal with a minimum amount of administrative effort?
- A. Configure the Don't Allow Sharing Outside Your Organization option in the sharing settings of each site collection
 - B. Configure the Allow External Users Who Accept Sharing Invitations And Sign In As Authenticated Users at the SharePoint Online tenancy level
 - C. Configure the Allow Both External Users Who Accept Sharing Invitations And Anonymous Guest Links at the SharePoint Online tenancy level
 - D. Configure the Don't Allow Sharing Outside Your Organization option at the SharePoint Online tenancy level

Objective 2.2: Create SharePoint site collection

This objective deals with creating and managing SharePoint site collections. To master this objective, you'll need to understand how to configure a user as a site collection administrator, how to configure resource quotas, how to apply storage quotas, and other aspects of managing site collections within SharePoint Online.

This objective covers the following topics:

- Site collection administrators
- Resource quotas
- Configure public website
- Set storage quota for site collection
- Manage site collections

Understanding site collection administrators

Site collection administrators are users who have permission to manage SharePoint Online at the top of a specified site collection. A site collection administrator has permissions over all content in the site collection, including all subsites. Each site collection is a separate permissions root. For example, a site collection that has the URL *http://contoso347er.sharepoint.com/sites/Research* does not have the same permissions as the site collection *http://contoso347er.sharepoint.com*.

A site collection has only one primary administrator, but can have multiple site collection administrators. A primary site collection administrator receives administrative email alerts for the site collection.

To configure site collection administrators for a site collection, perform the following steps:

1. Sign in to the Office 365 Admin Center with a user account that has SharePoint Online administrator privileges.
2. Under Admin, click SharePoint. This will open the SharePoint Admin Center.
3. Click Site Collections.
4. In the list of Site Collections, select the site for which you want to configure the site collection administrators. Figure 2-21 shows the site collection *https://contoso347er.sharepoint.com/sites/TeamSiteTemp* selected.

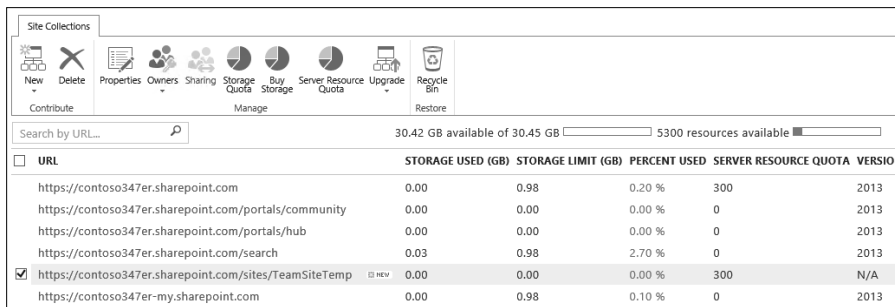


FIGURE 2-21 Site Collections

5. In the Site Collections section, click Owners and then click Manage Administrators as shown in Figure 2-22.

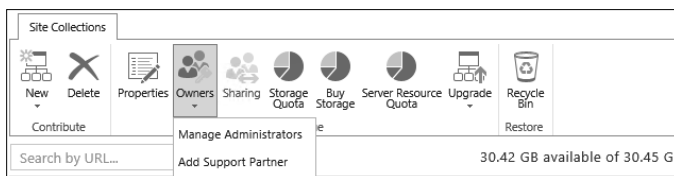


FIGURE 2-22 Manage Administrators

6. On the Manage Administrators dialog box, you can change the name of the Primary Site Collection Administrator, which is set when the site collection is created, and add the names of additional Site Collection Administrators. Figure 2-23 shows Don Funk set as the Primary Site Collection Administrator with Kim Akers and Dan Jump set as Site Collection Administrators.

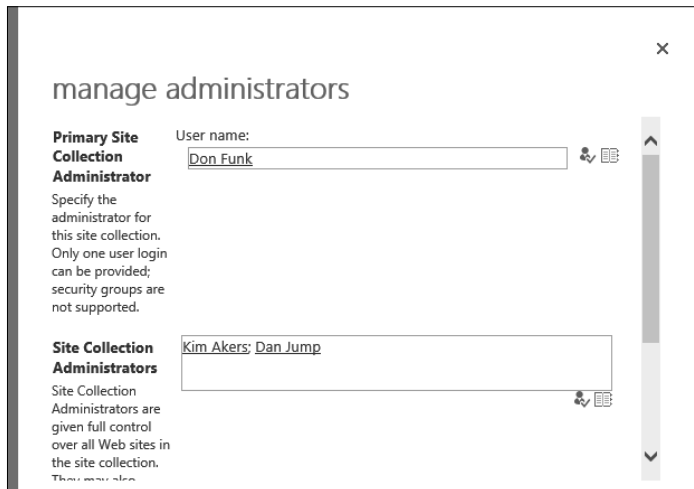


FIGURE 2-23 Manage Administrators

7. You can use the Check Names button to verify that the names entered are correct. When entering more than one name in the Site Collection Administrators text box, separate each name using a semicolon.
8. Click OK to assign the site collection administrator settings to the site collection.

MORE INFO SITE COLLECTION ADMINISTRATORS

You can learn more about site collection administrators at <https://support.office.com/en-au/article/Manage-administrators-for-a-site-collection-9a7e46f9-3fc4-4297-955a-82cb292a5be0>.

Understanding resource quotas

Server resources are a numerical way of representing server resources, including RAM and CPU utilization. Each SharePoint Online deployment is allocated a server resource figure based on the number of user licenses. This server resource figure is shared across all site collections. You can view the amount of resources available for a collection on the Site Collections page. Figure 2-24 shows a tenancy where 5,300 resources are available.

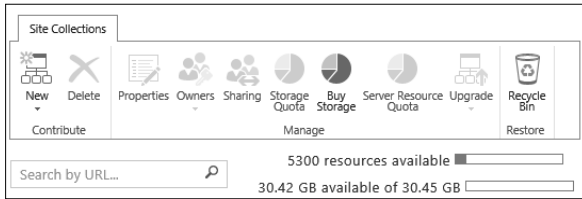


FIGURE 2-24 Resource quotas

Organizations that have customized site collections or sandboxed solutions can use resource quotas to ensure that resources, such as server CPU and RAM, aren't exhausted across the tenancy. If the number of resources used in a 24-hour period exceeds the resources available, SharePoint Online turns off the sandbox. When the sandbox is turned off, custom code will not run. The sandbox will be turned back on when the 24-hour period expires and the resource number is reset.

By applying resource quotas to specific collections, administrators can ensure that custom code running in specific site collections does not deplete all server resources assigned to the tenancy. Purchasing extra user licenses will increase the overall resource allocation to the tenancy.

To configure a resource quota for a specific site collection, perform the following steps:

1. Sign in to the Office 365 Admin Center with a user account that has SharePoint Online administrator privileges.
2. Under Admin, click SharePoint. This will open the SharePoint Admin Center.
3. Click Site Collections.
4. Select the site collection for which you want to configure the resource quota and then click Server Resource Quota. Figure 2-25 shows the site collection *https://contoso347er.sharepoint.com/sites/TeamSiteTemp* selected.

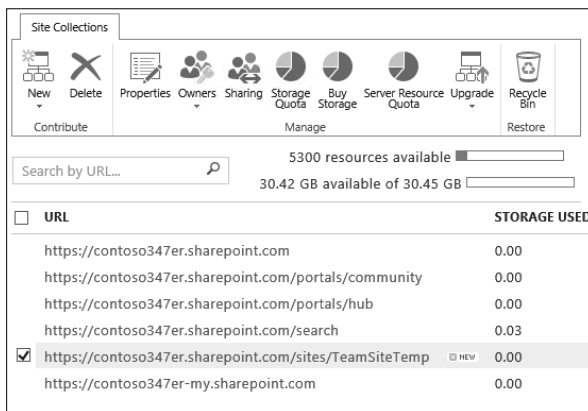


FIGURE 2-25 Site Collections

5. On the Set Server Resource Quota page, specify the number of server resources to be assigned to the collection. You can also configure an email to be sent to the primary site collection administrator when the resource utilization reaches a specific percentage of the assigned quota. Figure 2-26 shows a quota set to 300 and an email alert configured to be sent when the quota reached 95 percent.

set server resource quota

Limit the server resource quota for each selected site collection to a maximum of:
300 resources of 5300 resources available

Send e-mail when each selected site collection resource usage reaches warning level at:
95 %

Changes will be applied to the following 1 site collections:

URL	SERVER RESOURCE QUOTA
https://contoso347er.sharepoint.com/sites/TeamSite Temp	300

Save Cancel

FIGURE 2-26 Server Resource Quota

6. Click Save to apply the new quota to the site collection.

MORE INFO RESOURCE QUOTAS

You can learn more about resource quotas at <https://support.office.com/en-us/article/Manage-SharePoint-Online-server-resource-quotas-for-sandboxed-solutions-90e4e-aaa-899a-48d6-b850-f272366bf8cc>.

Using SharePoint Online Public Websites

SharePoint Online Public Websites were a feature that allowed organizations to create an online presence accessible to clients on the Internet without requiring authentication. As of March 2015, the SharePoint Online Public Website feature was not available to new Office 365 customers. Existing Office 365 customers will be able to use the SharePoint Online Public Website feature until March 2017. While this feature appears in the current 70-347 exam objectives, the feature becoming unavailable means that items related to it will be withdrawn from the exam.

MORE INFO SHAREPOINT ONLINE PUBLIC WEBSITES

You can learn more about changes to SharePoint Online Public Websites at <https://support.microsoft.com/en-us/kb/3027254>.

Setting storage quota for site collection

Storage quotas determine how much storage space can be used. Office 365 tenancies are allocated an amount of storage space for SharePoint Online based on the number of users associated with the tenancy. The amount of storage space allocated to SharePoint Online uses the formula 10 GB plus 500 MB per user. For example, if an organization has 40 users associated with its Office 365 tenancy, the amount of storage space allocated to SharePoint Online is: 10 GB plus (500 MB * 40) equals 20 GB. It's possible for organizations to purchase additional storage on top of this initial allocation, as needed. Additional storage is allocated and on a GB per month basis. A site collection can be allocated a maximum of 1 TB of storage.

You can view the current amount of storage allocated to the tenancy by performing the following steps:

1. Sign in to the Office 365 Admin Center with a user account that has SharePoint Online administrator privileges.
2. Under Admin, click SharePoint. This will open the SharePoint Admin Center.
3. Click Site Collections. In the Site Collections area, you will be able to see the resources available as well as the remaining storage available. Figure 2-27 shows 30.42 GB available out of 30.45 GB.

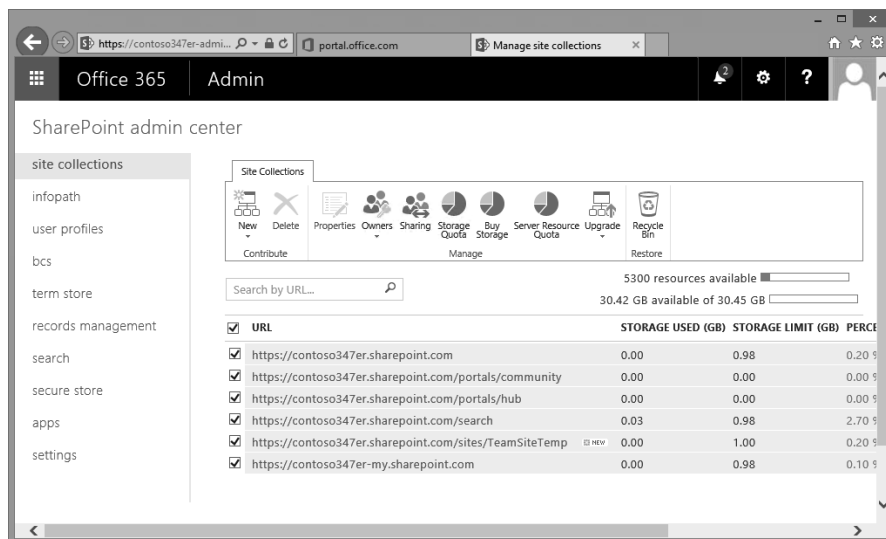


FIGURE 2-27 Storage use

This storage allocation is available to all site collections associated with the tenant. It functions as a central storage pool from which all SharePoint Online storage can be allocated.

You can purchase additional storage for a tenancy by performing the following steps:

1. Sign in to the Office 365 Admin Center with a user account that has SharePoint Online administrator privileges.
2. Under Admin, click SharePoint. This will open the SharePoint Admin Center.
3. In the Site Collections area, shown in Figure 2-28, click Buy Storage.

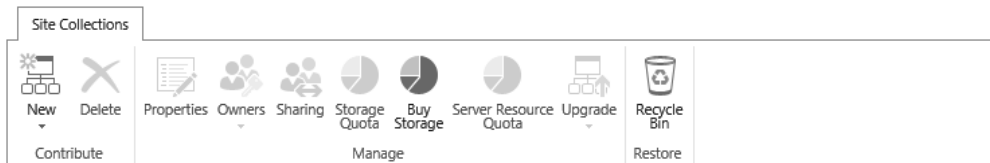


FIGURE 2-28 Site Collections menu

4. You will need to re-sign in to Office 365 with an account with tenancy Administrator permissions or Billing Administrator permissions.
5. On the Manage Subscription page, select the subscription that you would like to add additional storage to and click the Add More link next to the text that indicates the number of current licenses.
6. In the section named Optional Add-Ons, enter the additional storage in GB that you want to add to the tenancy. It is not necessary to enter information in the user license field, though you can also use this section of the Manage Subscription page to add additional user licenses to a subscription.
7. Click Add licenses and then click Place Order.

There are two ways of allocating storage:

- **Automatically** You can choose to use the pooled storage model.
- **Manually** Allows you to manually configure storage allocations on a per-site collection basis.

MORE INFO ADD STORAGE TO SHAREPOINT ONLINE

You can learn more about adding extra storage to SharePoint online at <http://blogs.technet.com/b/lystavlenn/archive/2012/07/11/how-to-add-extra-storage-to-sharepoint-online.aspx>.

Pooled storage model

The pooled storage model is a feature of SharePoint Online introduced in 2015. The pooled storage model allows SharePoint Online to manage storage automatically rather than storage management being a task performed manually by an administrator. The pooled storage model will be the default setting for new subscriptions created after late 2015.

If your organization has an existing Office 365 subscription, will need to enable the pooled storage model manually. When you do this, SharePoint Online removes the existing limits that you have configured for site collections and reset the limits to 1 TB.

To configure an Office 365 tenancy to use the pooled storage model for SharePoint Online, perform the following steps:

1. Sign in to the Office 365 Admin Center with a user account that has SharePoint Online administrator privileges.
2. Under Admin, click SharePoint. This will open the SharePoint Admin Center as shown in Figure 2-29.

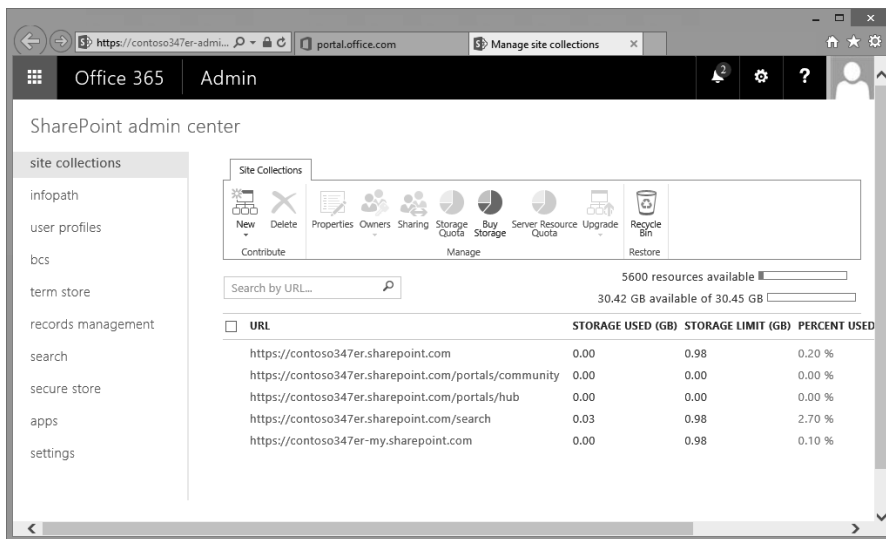


FIGURE 2-29 SharePoint Admin Center

3. In the SharePoint Admin Center, select Settings, as shown in Figure 2-30.

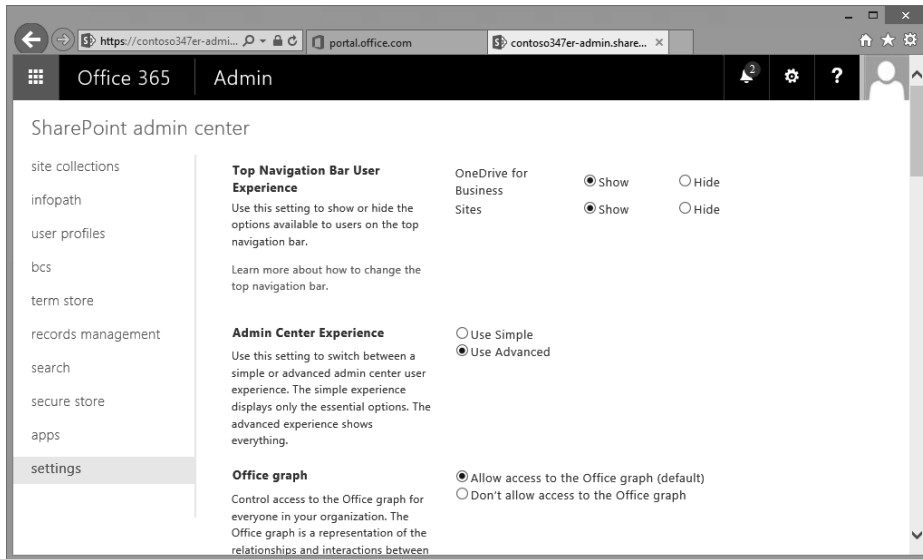


FIGURE 2-30 Settings

4. Under Site Collection Storage Management, select Auto and then click OK. Note that the pooled storage feature is being rolled out in 2015. The Site Collection Storage Management area might not be available through the settings section of all Office 365 subscriptions until the end of 2015.

Per-site collection storage management

The default option for Office 365 tenancies created before mid-2015 was that storage management occurred on a per-site collection basis. If you have switched to the pooled storage model and want to switch back, or have an Office 365 tenancy created after mid-2015, you can switch to per-site collection storage management by performing the following steps:

1. Sign in to the Office 365 Admin Center with a user account that has SharePoint Online administrator privileges.
2. Under Admin, click SharePoint. This will open the SharePoint Admin Center.
3. In the Settings section, in the Site Collection Management area, select Manual and then click OK. The Site Collection Storage Management area might not be available through the settings section of all Office 365 subscriptions until the end of 2015.

Setting site collection storage limits

You can configure storage limits on a per site-collection basis. To do this, perform the following steps:

1. Sign in to the Office 365 Admin Center with a user account that has SharePoint Online administrator privileges.
2. Under Admin, click SharePoint. This will open the SharePoint Admin Center.
3. Select the Site Collections area as shown in Figure 2-31.

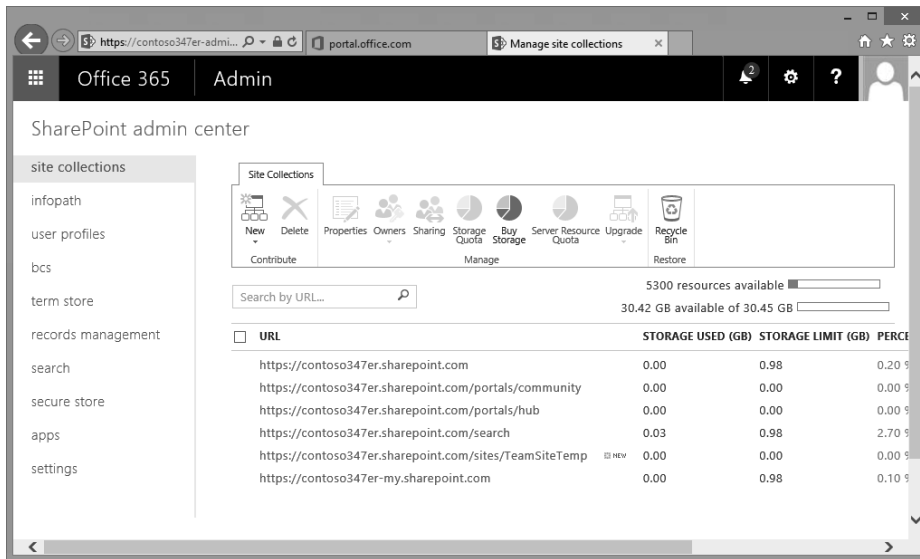


FIGURE 2-31 List of Site Collections

4. Select the site collection for which you want to configure the quota. Figure 2-32 shows the selection of the site collection with the URL *https://contoso347er.sharepoint.com/sites/TeamSiteTemp*.

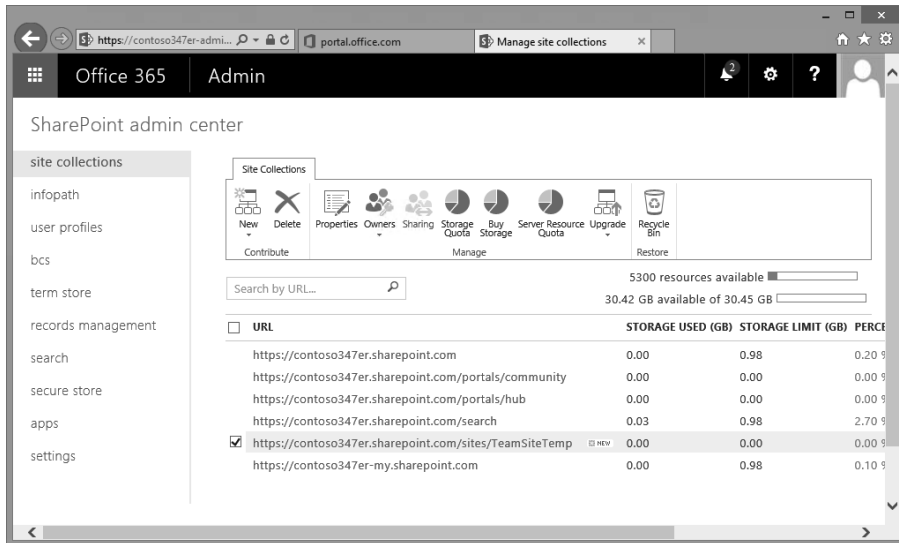


FIGURE 2-32 Site Collection selected

5. On the Site Collections toolbar, click Storage Quota.
6. On the Set Storage Quota dialog box, shown in Figure 2-33, configure the following options and then click Save:
 - **Limit Storage Quota For Each Selected Site Collection To A Maximum Of** This option allows you to configure the maximum amount of storage allocated to each site collection. A figure of 0 indicates that no quota is set for the site collection.
 - **Send Email To Site Collection Administrators When A Site Collection's Storage Reaches** Allows you to configure an email to be automatically sent after the storage allocated to the site collection reaches the specified percentage.

set storage quota

Current tenant storage allocation 30.42 GB available of 30.45 GB

Limit storage quota for each selected site collection to a maximum of:
 GB

Send e-mail to site collection administrators when a site collection's storage reaches:
 %

Changes will be applied to the following 1 site collections:

URL	USAGE (GB)	QUOTA (GB)
https://contoso347er.sharepoint.com/sites/Tea mSiteTemp	0.00	0.00

FIGURE 2-33 Storage Quota

MORE INFO STORAGE QUOTAS FOR SITE COLLECTIONS

You can learn more about storage quotas for site collections at <https://support.office.com/en-us/article/Manage-site-collection-storage-limits-77389c2c-8e7e-4b16-ab97-1c7103784b08>.

Managing site collections

A user with SharePoint Online Administrator permissions is able to create, delete, and restore deleted site collections.

Creating site collections

To create a site collection, perform the following steps:

1. Sign in to the Office 365 Admin Center with a user account that has SharePoint Online administrator privileges.
2. Under Admin, click SharePoint. This will open the SharePoint Admin Center.
3. In the site collections area, shown in Figure 2-34, click New and then click Private Site Collection.

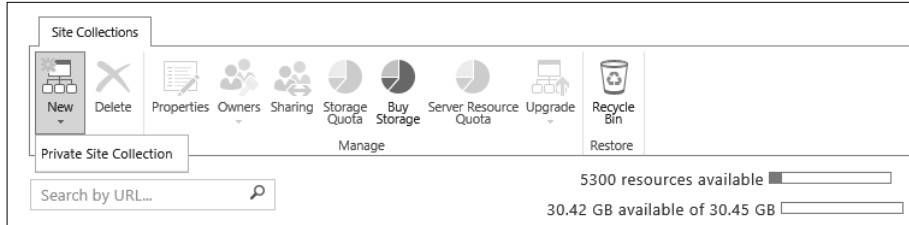


FIGURE 2-34 Create Site Collection

4. On the New Site Collection page, shown in Figure 2-35, provide the following information and click OK:
 - **Title** The name of the site collection.
 - **Website Address** Allows you to specify the address of the website. Drop-down menus allow you to select the domain name and the URL path. The URL path can either have /sites/ or /teams/ after the domain name.
 - **Template Selection** Allows you to select which template to use for the site collection. Available templates are separated across the following categories: Collaboration, Enterprise, Publishing, and Custom. You also use this section to select a language from a drop-down list. Choosing the correct language at this stage of the process is critical because it is not possible to alter the language selection for the site collection after the collection is created. You can enable SharePoint's multiple language interface on a site collection, but the primary language will always be the one selected during site collection creation.
 - **Time Zone** Allows you to specify the time zone for the site collection.
 - **Administrator** Use this option to specify the administrator of the site collection. You can type the user name, or browse for a site collection administrator. You can alter the site collection administrator after the creation of the site collection.
 - **Storage Quota** Use this option to specify the storage quota in GB for the site collection up to a maximum value of 1 TB.
 - **Server Resource Quota** Use this option to specify the resources you want to allocate to this collection in terms of available resources. Resources are a combination of performance metrics related to the execution of code for sandboxed solutions.

FIGURE 2-35 New Site Collection

Delete site collection

As part of ensuring that data stored on SharePoint Online is not retained past the point where no one is using it, you will occasionally need to delete site collections. For example, you might want to delete a site collection used for a specific project that has long since ended. Site collections that you delete are moved to the Recycle Bin. You will read more about the Recycle Bin later in this chapter.

Deleting a site collection deletes the site hierarchy hosted within the collection. It also deletes the following user and content data stored within the site collection, including:

- Documents and document libraries
- Lists and list data
- Site configuration settings
- Site and subsite role and security information

- Subsites of the top-level website
- Web parts
- Document workspaces
- Content types
- User associations

To delete a site collection, perform the following steps:

1. Sign in to the Office 365 Admin Center with a user account that has SharePoint Online administrator privileges.
2. Under Admin, click SharePoint. This will open the SharePoint Admin Center.
3. In the Site Collections area, select the site collection that you want to delete. Figure 2-36 shows the selection of the site collection with the address *https://contoso347er.sharepoint.com/sites/TeamSiteTemp*.

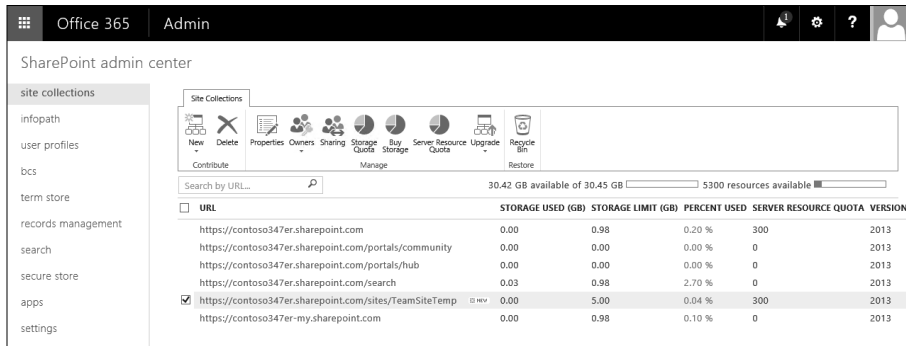


FIGURE 2-36 Site Collections

4. In the Site Collections area, shown in Figure 2-37, click Delete.

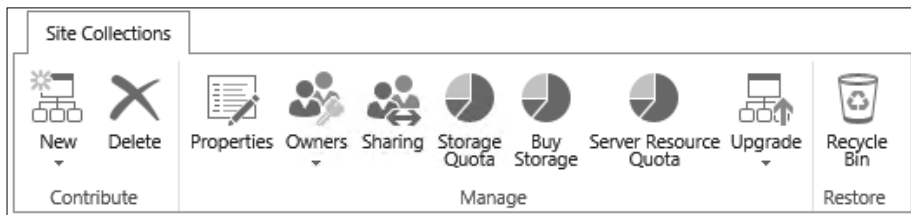


FIGURE 2-37 Delete Site Collections

5. On the Delete Site Collections page, shown in Figure 2-38, click Delete.

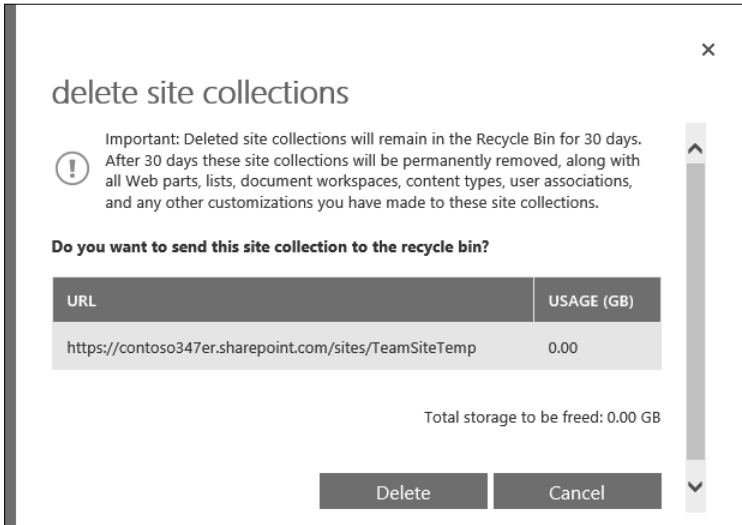


FIGURE 2-38 Delete Site Collections

MORE INFO CREATING AND DELETING SHAREPOINT ONLINE SITE COLLECTIONS

You can learn more about creating and deleting SharePoint Online site collections at <https://support.office.com/en-us/article/Create-or-delete-a-site-collection-3a3d-7ab9-5d21-41f1-b4bd-5200071dd539>.

Restore deleted site collection

When you delete a SharePoint Online site collection, it is moved to the Recycle Bin for 30 days before it is purged. If you need a site collection restored after this 30-day period has elapsed, you have an additional 14 days in which you can have Microsoft perform the restoration through a Service Request.

You can view the site collections in the Recycle Bin and the number of days remaining before being purged by performing the following steps:

1. Sign in to the Office 365 Admin Center with a user account that has SharePoint Online administrator privileges.
2. Under Admin, click SharePoint. This will open the SharePoint Admin Center.
3. In the Site Collections area, shown in Figure 2-39, click Recycle Bin.

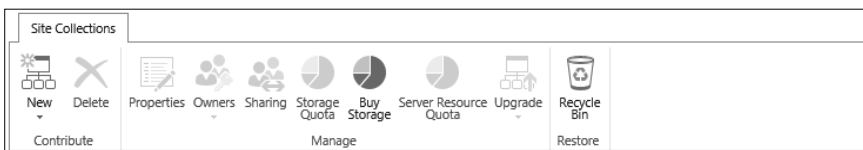


FIGURE 2-39 Recycle Bin

- In the Recycle Bin, you can see the list of site collections that have been deleted, and also when deleted, along with the number of days before being purged from the Recycle Bin. Figure 2-40 shows the Recycle Bin.

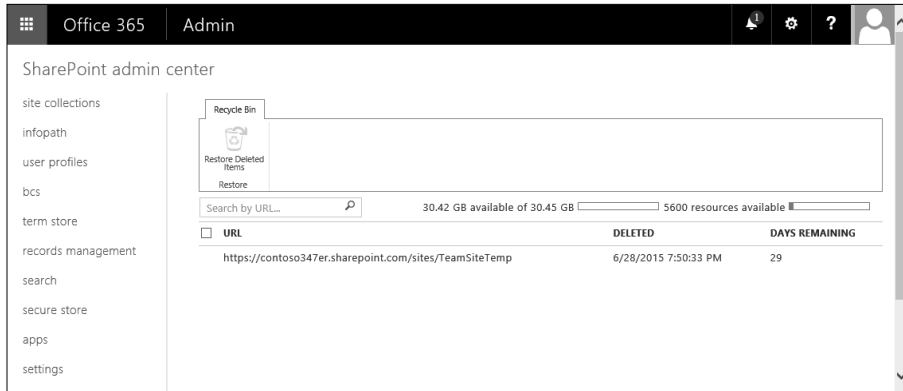


FIGURE 2-40 Recycle Bin contents

You can restore a deleted site collection under the following circumstances:

- The site collection has been in the Recycle Bin for less than 30 days.
- The usage quota for the SharePoint Online tenancy has not been exceeded.
- The storage quota for the SharePoint Online tenancy has not been exceeded.

Site collection URLs must be unique. This means that an active site collection cannot have the same URL as a deleted site collection that is still in the Recycle Bin. Should you need to create a new site with the same URL as a site in the Recycle Bin, the interface will prompt you to permanently delete the site collection. This will remove the site from the Recycle Bin.

To restore a deleted site collection, perform the following steps:

1. Sign in to the Office 365 Admin Center with a user account that has SharePoint Online administrator privileges.
2. Under Admin, click SharePoint. This will open the SharePoint Admin Center.
3. In the Site Collections area, shown in Figure 2-41, click Recycle Bin.

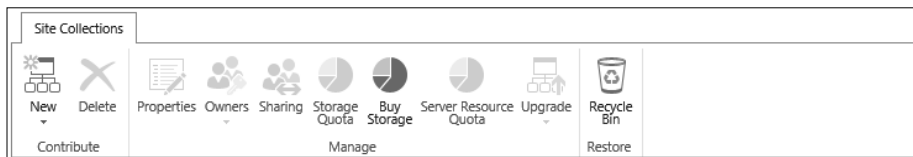


FIGURE 2-41 Recycle Bin

4. In the Recycle Bin area, select the site collection that you want to restore. Figure 2-42 shows the site collection <https://contoso347er.sharepoint.com/sites/TeamSiteTemp> selected. Click Restore Deleted Items.

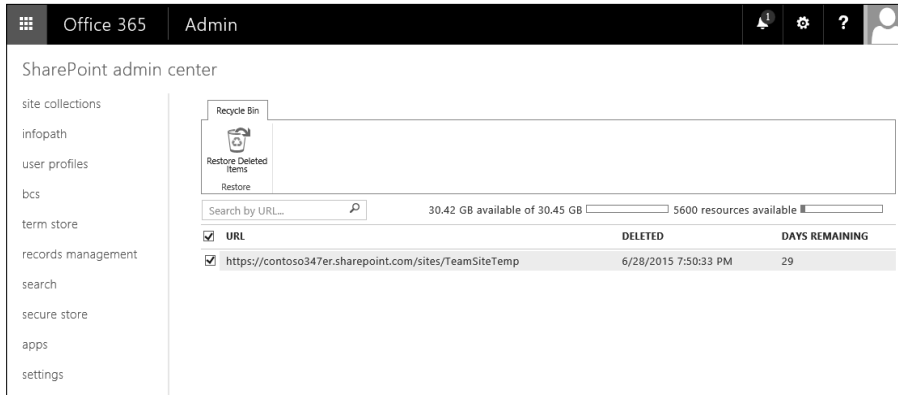


FIGURE 2-42 Recover Site Collection

5. On the Restore Site Collections page, shown in Figure 2-43, click Restore.

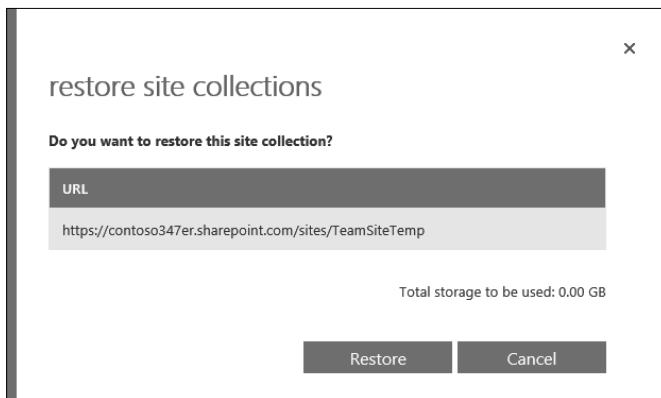


FIGURE 2-43 Restore Site Collections

MORE INFO RESTORE DELETED SITE COLLECTION

You can learn more about restoring deleted SharePoint Online site collections at <https://support.office.com/en-us/article/Restore-a-deleted-site-collection-91c18651-c017-47d1-9c27-3a22f325d6f1>.



EXAM TIP

Remember the amount of time that a site collection remains in the Recycle Bin before being purged.



Thought experiment

Managing site collections at Fabrikam

In this thought experiment, apply what you learned about this objective. You can find answers to these questions in the “Answers” section at the end of this chapter.

You have recently deleted a number of site collections from your organization’s SharePoint Online tenancy. Several of these collections are still present in the Recycle Bin and others have been removed after exceeding the Recycle Bin retention period. With this information in mind, answer the following questions:

1. One of the site collections disappeared from the Recycle Bin yesterday. What steps could you take to recover it?
2. You want to create a new site collection with the URL of a recently deleted site collection. What steps must you take before you can perform this task?

Objective summary

- Site collection administrators are users who have permission to manage SharePoint Online at the top of a specified site collection.
- A site collection administrator has permissions over all content in the site collection, including all subsites.
- Server resources are a numerical way of representing server resources, including RAM and CPU utilization.
- Each SharePoint Online deployment is allocated a server resource figure based on the number of user licenses.
- If the number of resources used in a 24-hour period exceeds the resources available, the sandbox turns off and custom code will not run.
- SharePoint Online Public Websites is a functionality not available in new Office 365 subscriptions and only available in some existing subscriptions until March 2017.
- Office 365 tenancies are allocated an amount of storage space for SharePoint Online based on the number of users associated with the tenancy.
- You can assign storage quotas on a per-site collection basis to limit the amount of storage space consumed by individual site collections.
- When creating a site collection, you configure the name, URL, primary site collection administrator, template, storage quota, and server resource quota.
- A deleted site collection can be recovered from the Recycle Bin for 30 days.

Objective review

Answer the following questions to test your knowledge of the information in this objective. You can find the answers to these questions and explanations of why each answer choice is correct or incorrect in the “Answers” section at the end of this chapter.

1. An organization has 40 users associated with its Office 365 tenancy. You are planning allocation of SharePoint Online storage. How much storage space will be allocated to SharePoint Online by default given this number of users?
 - A. 10 GB
 - B. 20 GB
 - C. 30 GB
 - D. 40 GB
2. What is the maximum amount of storage that can be allocated to an individual SharePoint Online site collection?
 - A. 100 GB
 - B. 500 GB
 - C. 1 TB
 - D. 5 TB
3. You have allocated a 50 GB quota to a SharePoint Online site collection. You want to be notified when 48 GB of that quota has been consumed. Which of the following steps should you take to accomplish this goal?
 - A. Set the quota to 48 GB
 - B. Set the quota to 52 GB
 - C. Set the quota warning email threshold to 48 percent
 - D. Set the quota warning email threshold to 96 percent
4. Which of the following settings cannot be changed after the creation of a site collection?
 - A. Site collection administrators
 - B. Storage quota
 - C. Server resource quota
 - D. Primary language
5. How long do deleted site collections remain in the Recycle Bin before being purged?
 - A. 15 days
 - B. 30 days
 - C. 60 days
 - D. 90 days

6. In which of the following cases will you be unable to recover a site collection from the Recycle Bin? (Choose all that apply.)
 - A. Usage quota for the SharePoint Online tenant has been exceeded
 - B. Storage quota for SharePoint Online tenant has been exceeded
 - C. Site collection was deleted more than 50 days ago
 - D. Site collection was deleted less than 20 days ago
7. How many primary site collection administrators can be assigned to a site collection?
 - A. 5
 - B. 1
 - C. 2
 - D. 10
8. You want to ensure that the custom code running in a specific site collection doesn't consume all of the CPU and RAM resources allocated to your organization's SharePoint Online tenancy. Which of the following steps would you take to accomplish this goal?
 - A. Configure a storage quota
 - B. Configure a resource quota
 - C. Configure site collection administrator
 - D. Purchase additional user licenses

Objective 2.3: Plan a collaboration solution

This objective deals with using a variety of Office 365 tools for collaboration and coauthoring. To master this objective you'll need to understand the differences between Yammer and SharePoint newsfeeds, the settings related to coauthoring, the functionality of OneDrive For Business, the SharePoint App Store, and Enterprise eDiscovery.

This objective covers the following topics:

- Yammer versus newsfeeds
- Coauthoring
- Project Online
- Excel Services
- Visio Services
- OneDrive for Business
- App Store
- Enterprise eDiscovery

Using newsfeeds and Yammer

Newsfeeds and Yammer provide different methods for allowing users to share information throughout the organization.

Newsfeeds

Newsfeeds in SharePoint Online function as an organizational blog where members of the organization can post and reply to posts. A newsfeed exists at the SharePoint Online tenancy level. Newsfeeds also exist at the team site level. Figure 2-44 shows a post to the newsfeed in a SharePoint Online tenancy's team site.

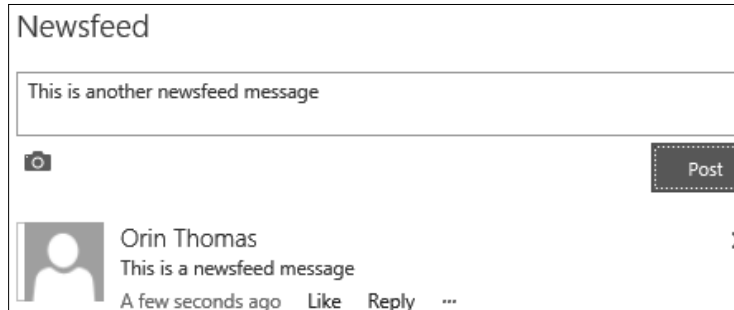


FIGURE 2-44 Newsfeeds

As is the case with other social networks, users can choose to like or reply to newsfeed posts. It is also possible to follow specific users. This allows for the newsfeed filter to be switched between those users a person is following and all users in the organization. People are also able to filter newsfeed posts so that only those posts that reference them are displayed.

In the event that you want to use a newsfeed to have a conversation with a small number of users rather than everyone in the organization, and you have permission to create new sites, you can do the following:

1. Create a new SharePoint Online site.
2. Share the site with the people who you want to have included in the conversation.
3. Use the site-specific newsfeed to have the conversation.
4. Ensure that users accessing the site select the Follow option, as shown in Figure 2-45, so that the users are subscribed to the newsfeed.

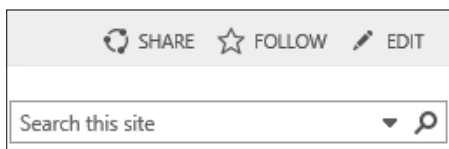


FIGURE 2-45 Follow option

Users can access all of the newsfeeds of sites that are followed through the newsfeed app. To access the newsfeed app, perform the following steps:

1. In the list of apps, shown in Figure 2-46, click Newsfeed.

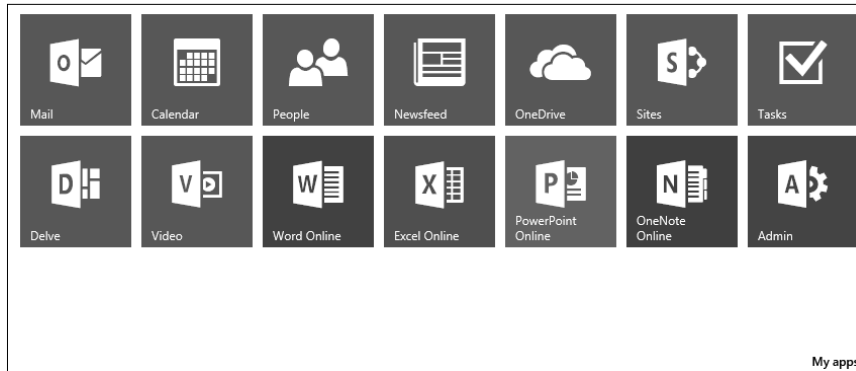


FIGURE 2-46 List of apps

2. The Newsfeed page will show you all existing posts on sites that you are following. Figure 2-47 shows a newsfeed where a user is following two sites.

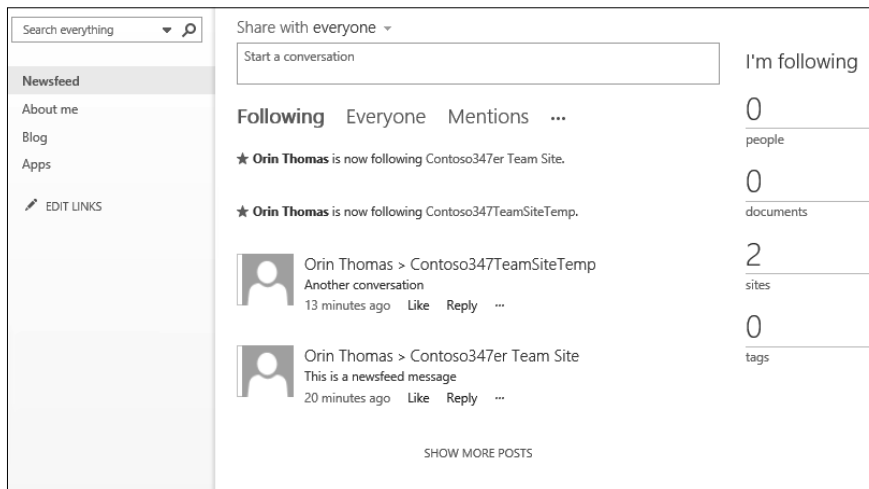


FIGURE 2-47 Newsfeed app

3. If you are following multiple sites, you are able to select which site you post to from the Newsfeed app by using the drop down menu, as shown in Figure 2-48.

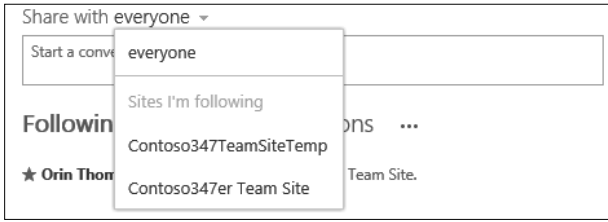


FIGURE 2-48 Sharing options

MORE INFO NEWSFEEDS

You can learn more about SharePoint Online newsfeeds at <https://support.office.com/en-us/article/Post-something-to-a-small-group-of-people-229a1060-4420-45b1-bd94-81a0c3f8bc1a>.

Yammer

Yammer is a private social network that has features similar to many of the larger social networks. Yammer allows people in your organization to collaborate with one another. Only people with company email addresses are able to join a company Yammer network.

To use Yammer with SharePoint Online, you need to configure Yammer as the SharePoint social collaboration option. To configure Yammer as the SharePoint social collaboration option, perform the following steps:

1. Sign in to the Office 365 Admin Center with a user account that has SharePoint Online administrator privileges.
2. Under Admin, click SharePoint. This will open the SharePoint Admin Center.
3. Click Settings. Next to Enterprise Social Collaboration, click Use Yammer.com Service, as shown in Figure 2-49.

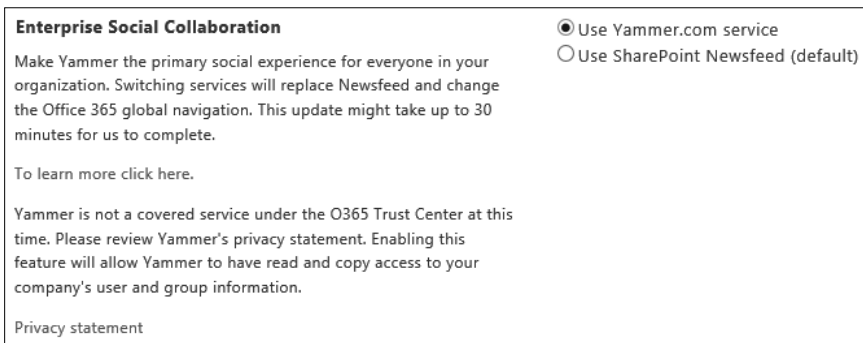


FIGURE 2-49 Enterprise Social Collaboration

4. Click Save.

Switching to Yammer doesn't disable Newsfeed functionality, though it does disable the ability to make posts to everyone in the organization. Newsfeeds associated with specific sites remain in place after you have enabled Yammer.

MORE INFO YAMMER VS. NEWSFEED

You can learn more about Yammer versus Newsfeed at <https://support.office.com/en-us/article/Pick-your-enterprise-social-experience-Yammer-or-Newsfeed--21954c85-4384-47d4-96c2-dfa1c9d56e66>.

Documenting coauthoring

The coauthoring feature of SharePoint Online allows multiple users to work on a document. This occurs in such a way that the changes made by one user do not interfere with the changes made by another. The ability to coauthor documents is enabled by default for documents stored in SharePoint Online.

Office 365 ProPlus provides coauthoring support for Word, PowerPoint, OneNote, and Visio. Coauthoring is also possible through the Word, PowerPoint, Excel, and OneNote Online web apps. The only restriction is that the Excel client application supports a Shared Workbook feature rather than direct coauthoring of workbooks stored in SharePoint Online.

When planning for document coauthoring in SharePoint Online, take the following into account:

- **Correct permissions** Every user who will coauthor a document needs to have appropriate permissions to edit the document. One method of accomplishing this goal is to give all users who need to edit the document access to the SharePoint site where the document is stored. SharePoint permissions can also be used to limit which documents within a SharePoint site can be edited by particular users.
- **Versioning** Versioning keeps track of documents and stores previous versions of a document. SharePoint Online supports major and minor versioning, with major versioning being the default value. Microsoft recommends that monitor versioning not be used for document libraries that are used with OneNote coauthoring, as it can interfere with OneNote's built-in versioning functionality.
- **Number of versions** The number of versions kept doesn't directly impact coauthoring, but it will impact the amount of storage space consumed by versions. The default value for SharePoint Online is 500 versions.
- **Check out** If a document is checked out by an author, the document is locked until the check out is released. This blocks coauthoring. Check out is disabled by default in SharePoint Online, but users can manually check out documents using the Advanced menu, as shown in Figure 2-50. You should warn users not to check out documents when engaging in the coauthoring process.

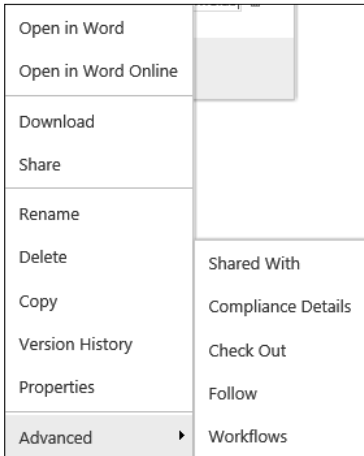


FIGURE 2-50 Check Out

To configure versioning and check out settings in a SharePoint Online document library, perform the following steps:

1. In the SharePoint Site, click Documents and then click Library, as shown in Figure 2-51.

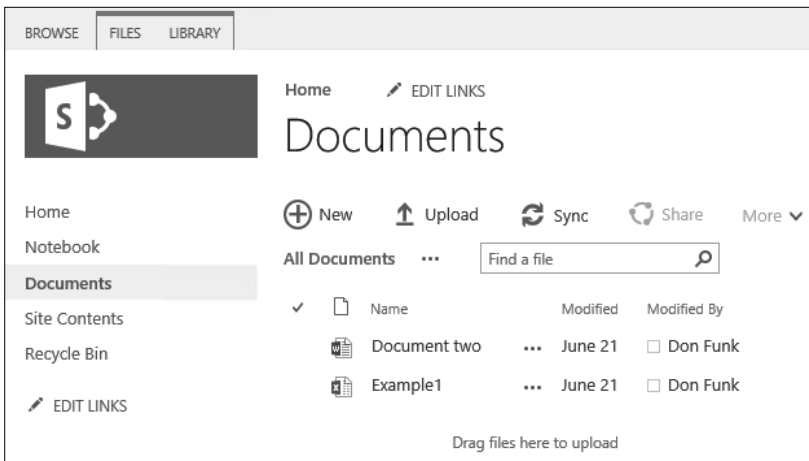


FIGURE 2-51 Documents

2. On the Library toolbar, shown in Figure 2-52, click Library Settings.



FIGURE 2-52 Library Settings

3. Under the General settings area, click Versioning Settings, as shown in Figure 2-53.

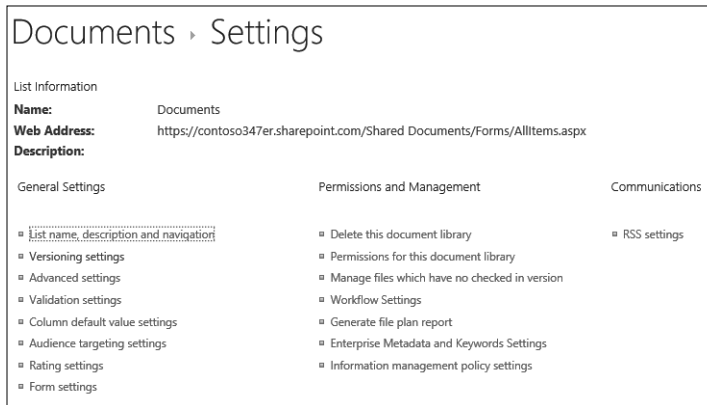


FIGURE 2-53 Library settings

4. Next to Document Version History, shown in Figure 2-54, choose whether you want to configure No versioning, Create Major Versions, or Create Major And Minor (Draft) Versions. You can also specify the number of major and minor versions to be kept. The default is to use major versions and to keep 500 major versions of a document.

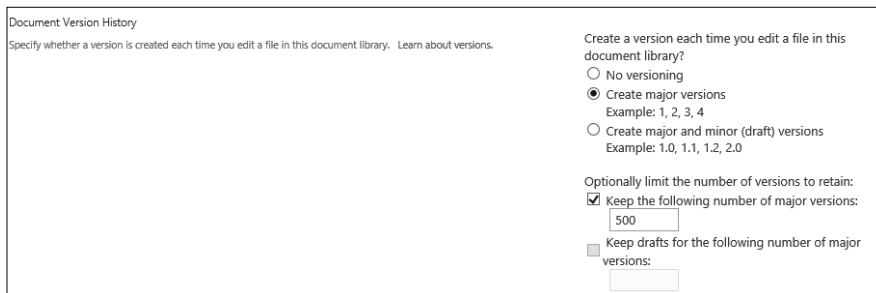


FIGURE 2-54 Version History

5. In the Require Check Out section, shown in Figure 2-55, specify whether documents should be checked out before editing. Remember that enabling this option disables coauthoring.

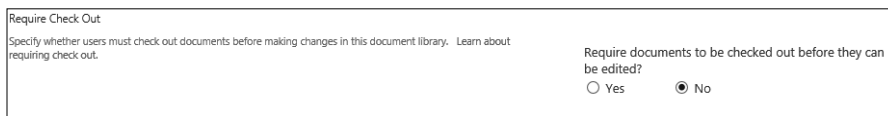


FIGURE 2-55 Require Check Out

6. Click OK to apply the new settings.

MORE INFO OFFICE 365 COAUTHORING

You can learn more about coauthoring with Office 365 at <https://support.office.com/en-us/article/Document-collaboration-and-co-authoring-ee1509b4-1f6e-401e-b04a-782d26f564a4>.

Project Online

Project Online is a standalone web service that provides browser-based portfolio and project management tools. Project Online includes Project Web App. Depending on an organization's Office 365 subscription level, it might also include Project Pro for Office 365. Project Pro for Office 365 is a desktop application that runs on client computers.

MORE INFO PROJECT ONLINE

You can learn more about Project Online at <https://support.office.com/en-us/article/Get-started-with-Project-Online-e3e5f64f-ada5-4f9d-a578-130b2d4e5f11>.

Excel Services

When you open an Excel file hosted in a SharePoint Online tenancy in a browser, the file opens in Excel Online. When you perform the same task with an Excel file hosted in an on-premises SharePoint 2013 deployment, the file might be opened either in Excel Services or in Excel Web App if an Office Web Apps server is present.

MORE INFO EXCEL SERVICES

You can learn more about Excel Services at <https://support.office.com/en-us/article/Comparing-Excel-Online-Excel-Services-and-Excel-Web-App-855ee1a3-9263-425d-bccd-4070d2413aa7>.

Visio Services

Visio Services is included with SharePoint 2013 and Office 365. It allows Visio diagrams stored in SharePoint 2013 or SharePoint Online to be viewed in a browser without requiring a full Visio client or Visio Viewer. Visio Services works with the .VSDX Visio file format. Older Visio files in .VDW format will also be visible in a web browser through Visio Services.

MORE INFO COLLABORATION WITH VISIO SERVICES

You can learn more about collaboration with Visio Services at <https://blogs.office.com/2012/09/18/sharing-diagrams-with-visio-services/>.

Using OneDrive for Business

OneDrive for Business, formerly known as SkyDrive Pro, is a location that allows you to store, sync, and share work files. OneDrive for Business is separate from OneDrive, which was formerly known as SkyDrive. OneDrive for Business differs from OneDrive in the following ways:

- OneDrive is associated with a personal Microsoft account. People in your organization cannot access or manage OneDrive.
- OneDrive for Business is managed by an organization and is made available through an Office 365 subscription. This means that files stored in OneDrive for Business can be accessed by Office 365 administrators. OneDrive for Business allows Office 365 users to share files with each other for the purposes of collaboration. OneDrive for Business can also be used with an on-premises SharePoint deployment. As this is an Office 365-related exam, using OneDrive for Business is not covered.

Accessing OneDrive for Business

A user can access OneDrive for Business by performing the following steps:

1. Sign in to Office 365 with your user account.
2. On the list of apps, shown in Figure 2-56, click OneDrive.



FIGURE 2-56 App list

3. The OneDrive for Business site, which is a SharePoint Online personal site, will be opened. Documents can be uploaded to this site or created and added to this location. It is also possible to create a folder hierarchy in this location. Figure 2-57 shows a OneDrive for Business page with several documents and folders.

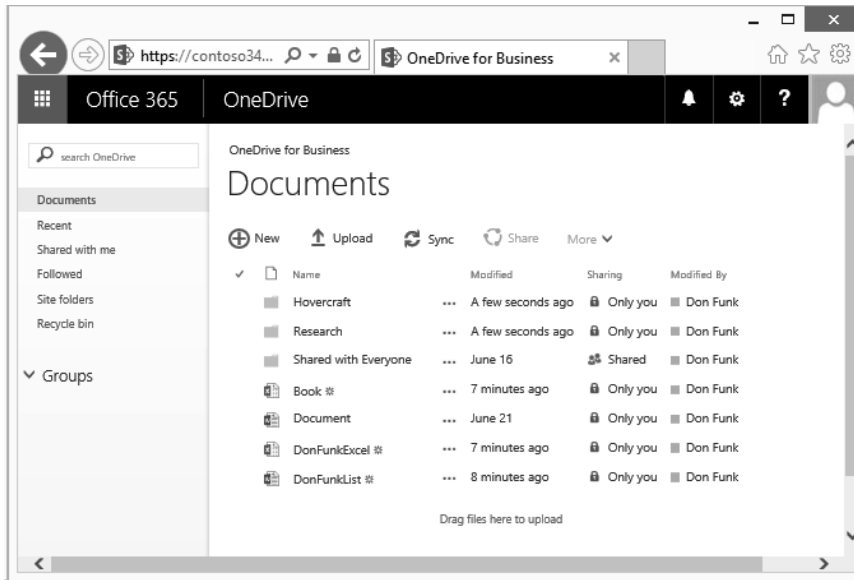


FIGURE 2-57 OneDrive For Business Documents

Collaborating with OneDrive for Business

Collaborating with someone using OneDrive for Business is very similar to collaborating using SharePoint Online. This makes sense considering OneDrive for Business stores data in SharePoint Online. The main difference is that the sharing done through SharePoint Online directly is usually managed by an administrator. The sharing done through OneDrive for Business is usually managed directly by an end user.

An end user can choose to share individual files or can create and share folders. As is the case with SharePoint Online, it's possible to share with people using a Microsoft account, or by sending an external link. Sharing settings are dependent on the sharing settings configured in the SharePoint Online tenancy.

- If the Don't Allow Sharing Outside Your Organization option is selected at the tenancy level, users will only be able to share with other users in the tenancy. If the users attempt to share with external users, they will see the message shown in Figure 2-58, explaining that sharing with external users is not possible.

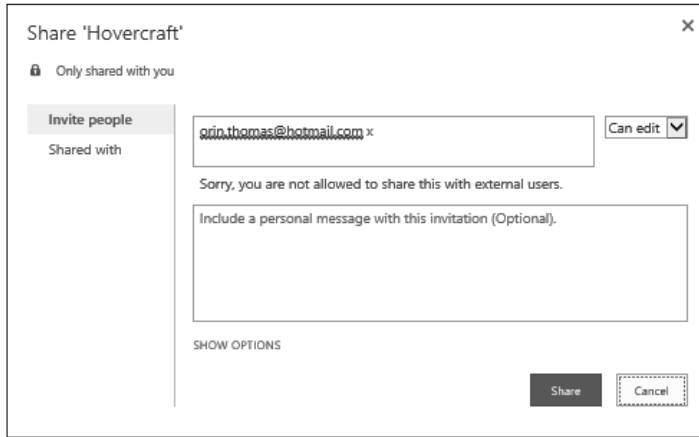


FIGURE 2-58 No sharing with external users

- If the Allow External Users Who Accept Sharing Invitations And Sign In As Authenticated Users option is selected at the tenancy level, sharing with external users will be possible as long as those users have a Microsoft account or an Office 365 account.
- If the Allow Both External Users Who Accept Sharing Invitations And Anonymous Guest Links option is selected at the tenancy level, it will be possible to share with external users with Office 365 or Microsoft accounts. It will also be possible to forward links to shared documents or folders to users so that they can access content without having to authenticate.

To share an individual document, perform the following steps:

1. Sign in to Office 365 with your user account.
2. On the list of apps, click OneDrive.
3. In the OneDrive for Business site, select the document that you want to share. Figure 2-59 shows the DonFunkExcel workbook selected.

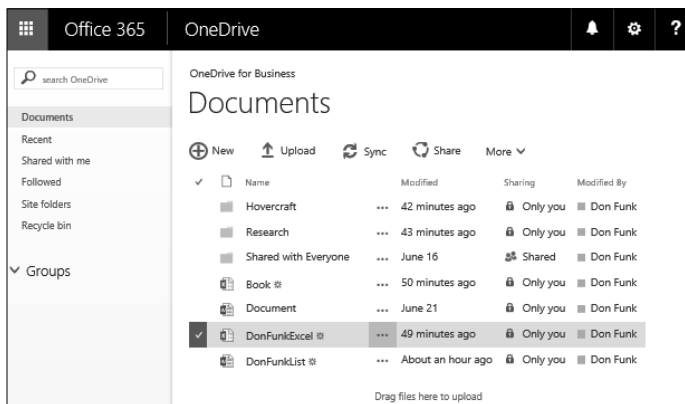


FIGURE 2-59 Select document

4. Click the Share icon. If the Allow Both External Users Who Accept Sharing Invitations And Anonymous Guest Links option is selected at the tenancy level, users will be able to share to external users and generate links. To share with external users, enter the user's email address and determine if the users have read-only or edit access. Figure 2-60 shows the user orin.thomas@outlook.com granted the edit permission.

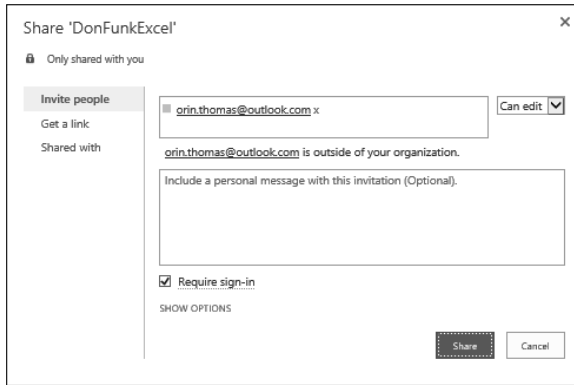


FIGURE 2-60 Share document

5. If you want to share the document with anonymous users, click the Get A Link section. On this page, you can click View Only or the Edit option, as shown in Figure 2-61.

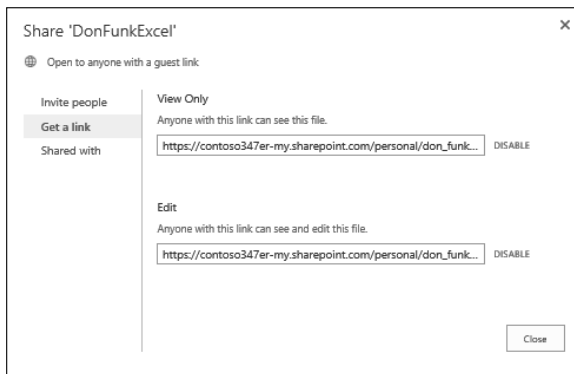


FIGURE 2-61 Anonymous sharing

You can view who a document is shared with on the document's Share page. Note that if you've invited someone to a document and they haven't accepted the invitation, their account will not be listed on the Shared With section of the Share page. Invitations remain valid for seven days.

To view who a document is shared with, perform the following steps:

1. Sign in to Office 365 with your user account.
2. On the list of apps, click OneDrive.

3. In the OneDrive for Business site, select the document of which you want to view the sharing properties. Any documents that are shared will have Shared in the Sharing column, as shown in Figure 2-62.

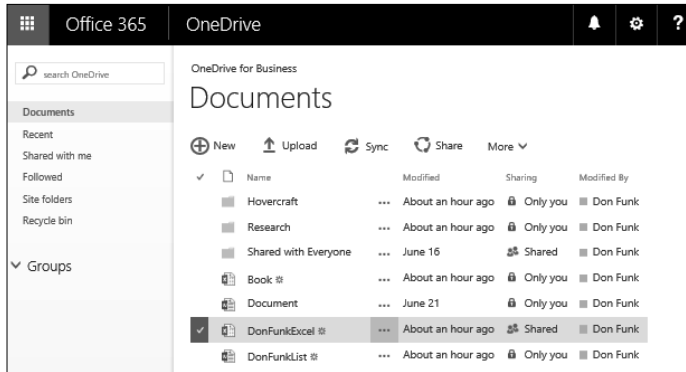


FIGURE 2-62 Document shown as Shared

4. On the toolbar, click Share.
5. The Shared With section will show with whom the document has been shared.
6. As Figure 2-63 shows, you can choose to remove someone's permission to access a document from this page.

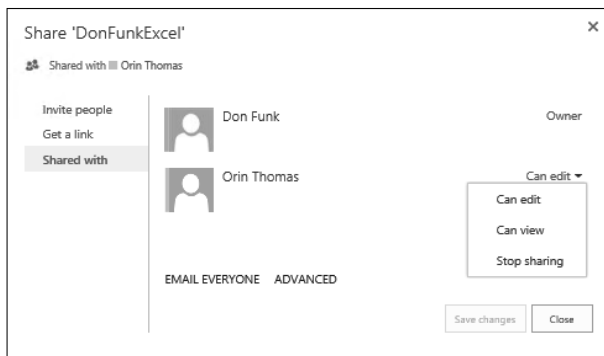


FIGURE 2-63 Who the document is shared with

You can share folders from OneDrive for Business. All of the content in a folder inherits the sharing settings of the parent folder. This makes sharing documents a matter of placing them in the appropriately configured folder.

To share a folder, perform the following steps:

1. Sign in to Office 365 with your user account.
2. On the list of apps, click OneDrive.

3. In the OneDrive for Business site, select the Folder you want to share. Figure 2-64 shows the Hovercraft folder selected.

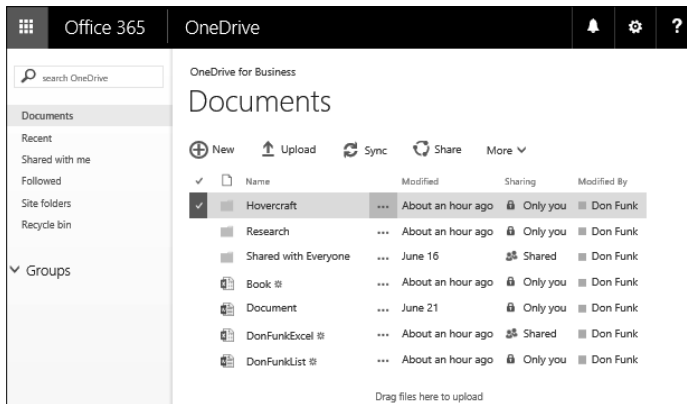


FIGURE 2-64 Share a folder

4. On the toolbar, click Share.
5. On the Invite People page, enter the email addresses of people who you want to invite to the folder and specify their permissions, either Read Only or Edit. Figure 2-65 shows sharing with an external user granted the Edit permission to items in the folder.

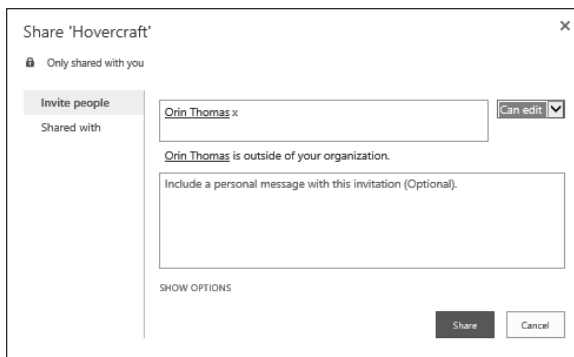


FIGURE 2-65 Share folder

You can't create links for anonymous users to folders. Anonymous links can only be created for documents.

Administering OneDrive for Business

Administrators are able to view files and folders stored in OneDrive for Business. To access a user's OneDrive for Business content, perform the following steps:

1. In the Admin area of the Office 365 Admin Center, click SharePoint.
2. In the SharePoint Admin Center, click User Profiles.
3. In the User Profiles setting, click Manage User Profiles, as shown in Figure 2-66.

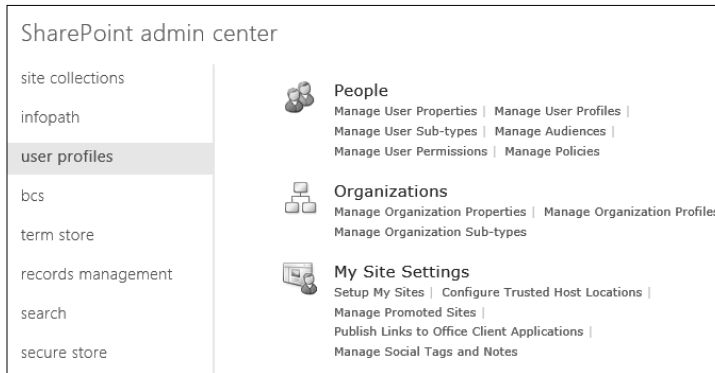


FIGURE 2-66 User Profiles

4. In the Find User Profiles box, enter part of the account name. Figure 2-67 shows a search for the name Don.

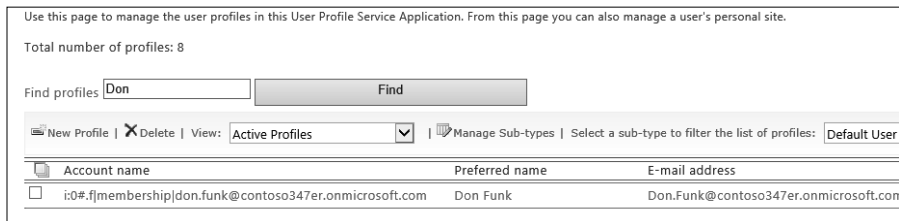


FIGURE 2-67 Find Profiles

5. Select the user whose OneDrive for Business content you want to examine, and then click Manage Site Collection Owners, as shown in Figure 2-68.

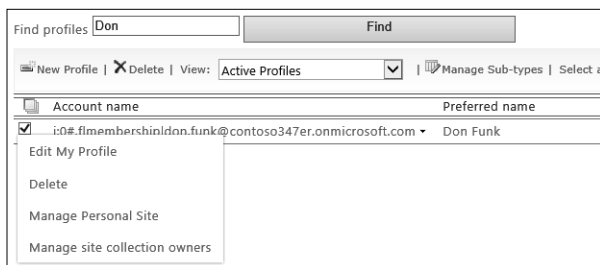


FIGURE 2-68 Manage Site Collection Owners

6. Add an administrator account to the list of Site Collection Administrators, and then click OK.

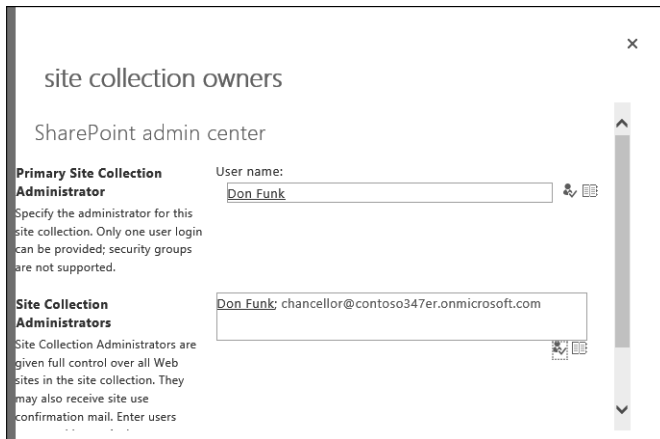


FIGURE 2-69 Add Site Collection Administrator

7. Select the user again, and this time select Manage Personal Site.
8. On the Site Settings page, click Documents.
9. The user's OneDrive for Business content will be displayed, as shown in Figure 2-70.

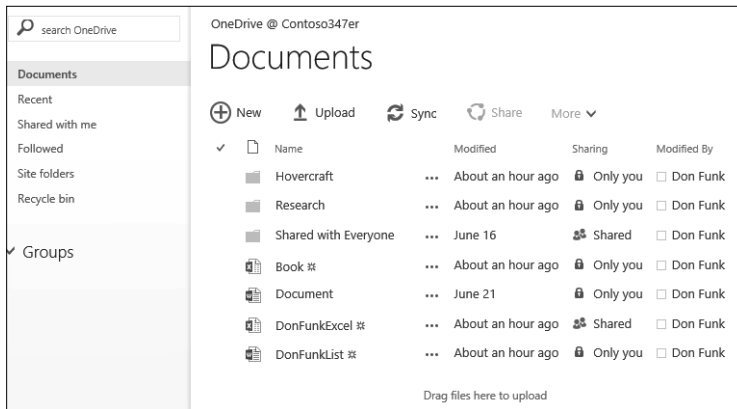


FIGURE 2-70 Administrator viewing documents

MORE INFO ONEDRIVE FOR BUSINESS

You can learn more about OneDrive for Business at <https://support.office.com/en-us/article/What-is-OneDrive-for-Business--187f90af-056f-47c0-9656-cc0ddca7fdc2>.

Understanding the App Store

The SharePoint App Store provides organizations with a collection of SharePoint apps that can be used with SharePoint 2013 and SharePoint Online. A SharePoint app is a stand-alone application that can add functionality to a SharePoint deployment. You can add apps to a SharePoint Online tenancy from the apps section of the SharePoint Admin Center, as shown in Figure 2-71.

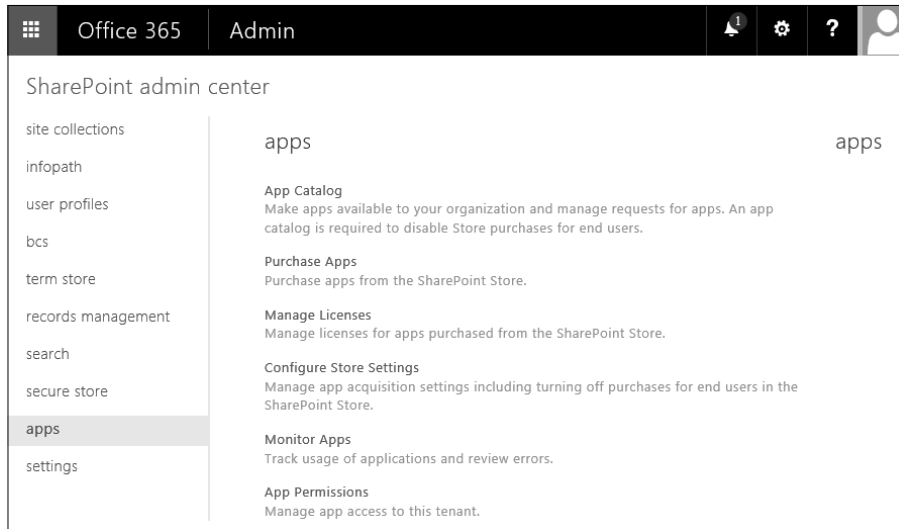


FIGURE 2-71 SharePoint Apps

From the Apps section of the SharePoint Admin Center, you can perform the following tasks:

- **App Catalog** Allows you to make purchased apps available to people in your organization. You need an app catalog if you want to disable Store purchases for end users.
- **Purchase Apps** Allows administrators to purchase apps from third-party developers, as well as Microsoft, from the SharePoint store.
- **Manage Licenses** Allows you to manage licensing for apps purchased from the SharePoint Store.
- **Configure Store Settings** Allows you to manage how apps are acquired by users from the SharePoint Store.
- **Monitor Apps** Allows you to track how SharePoint apps are being used across the SharePoint Online tenancy.
- **App Permissions** Allows you to manage how Apps interact with the SharePoint Online tenancy.

MORE INFO SHAREPOINT STORE APPS

You can learn more about SharePoint Store Apps at <https://support.office.com/en-us/article/Buy-an-app-from-the-SharePoint-Store-dd98e50e-d3db-4ecb-9bb7-82b189822d43>.

Understanding Enterprise eDiscovery

Enterprise eDiscovery is the process of locating content that will serve as evidence in litigation or an official investigation. SharePoint Online has a special site collection called the eDiscovery Center. This site collection allows you to create special SharePoint sites named cases that you can use to locate, hold, search, and export content from Exchange online, SharePoint Online, and OneDrive for Business.

Creating a case

To create an eDiscovery case, perform the following steps:

1. In the Admin area of the Office 365 Admin Center, click Compliance.
2. In the Compliance Center, click eDiscovery.
3. In the list of eDiscovery Cases, shown in Figure 2-72, click the Plus icon to create a new case.

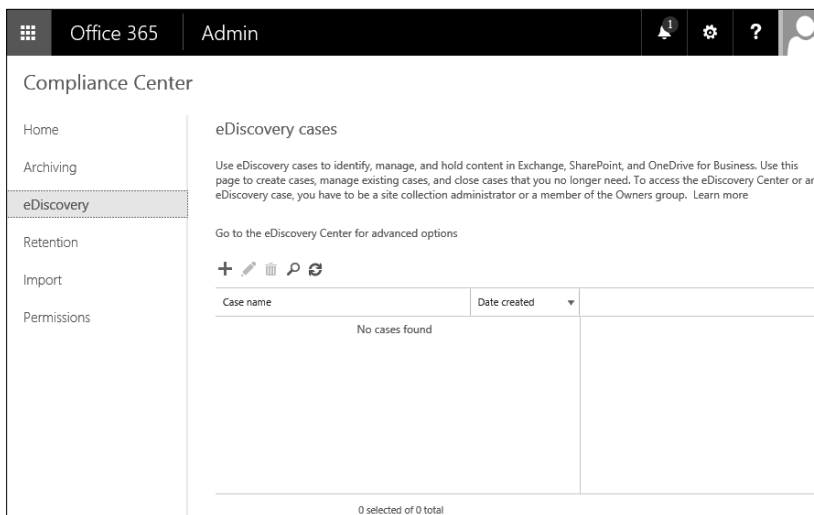


FIGURE 2-72 eDiscovery Cases

4. On the Site Contents, New SharePoint Site page, provide the following information, as shown in Figure 2-73, ensuring that you select the eDiscovery Case template:
 - Title: Title for the eDiscovery case
 - Description: Description for the case
 - URL name: Address of the site related to the case

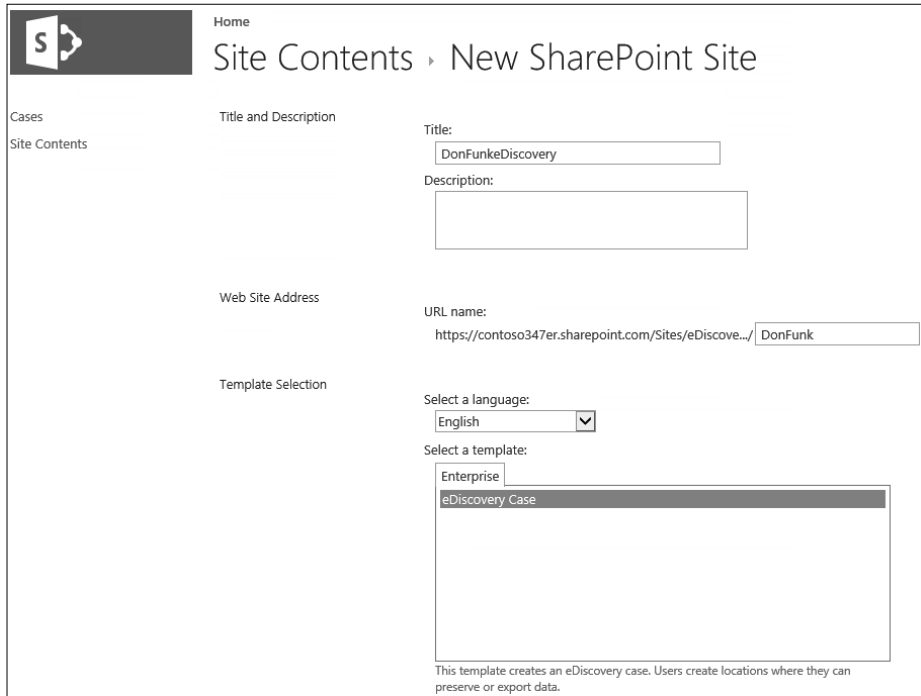


FIGURE 2-73 New SharePoint Site for eDiscovery case

5. You can specify whether the site will use the same permissions as the parent site or unique permissions. If you need to allow specific people access to one case, but not other eDiscovery cases stored within your SharePoint Online tenancy, choose unique permissions.

Add sources and place them on hold

Adding sources to an eDiscovery case allows information to be added to the case. To add sources to an eDiscovery case, perform the following steps:

1. In the Admin area of the Office 365 Admin Center, click Compliance.
2. In the Compliance Center, click eDiscovery.
3. In the list of eDiscovery Cases, shown in Figure 2-74, click the case that you want to add a source to and then click the pencil icon, which allows you to edit the case.

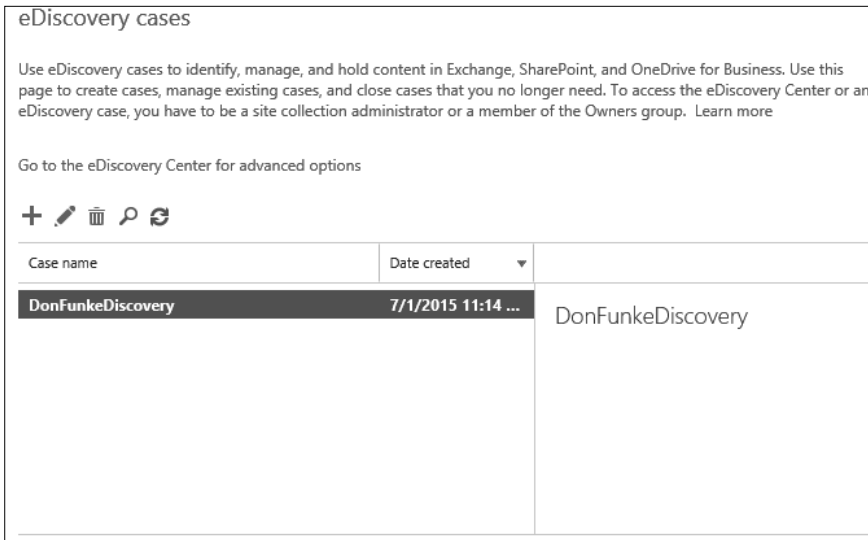


FIGURE 2-74 eDiscovery Cases

4. On the eDiscovery case page, shown in Figure 2-75, click New Item.

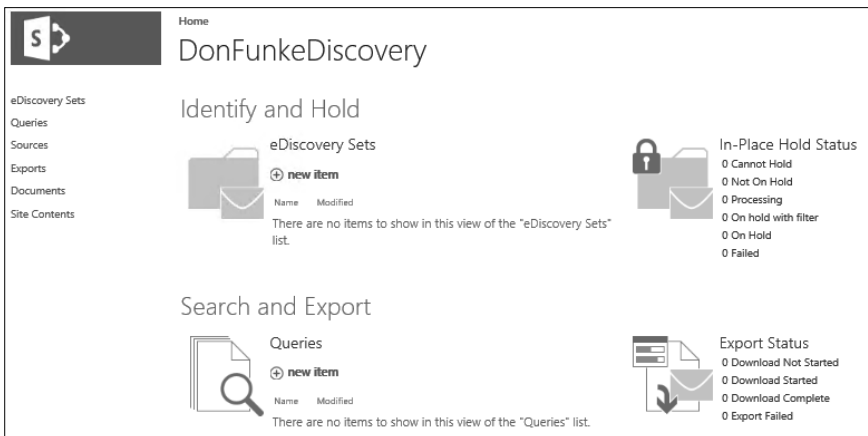


FIGURE 2-75 eDiscovery Case page

5. On the New: eDiscovery Set page, provide a name for the set and then click Add & Manage sources, as shown in Figure 2-76.

FIGURE 2-76 New: eDiscovery Set

- On the Add & Manage Sources page, provide the names of mailboxes and the locations of SharePoint Sites and File Shares that are indexed by Search and click Save. All subsites and sub-folders will be included as sources. Figure 2-77 shows the Contoso347er Team Site selected.

FIGURE 2-77 Add Sources

- As shown in Figure 2-78, you can use the filter box to provide keywords; provide a start date and an end date; the name of an author; an email domain; and also enable in-place hold, stopping the deletion of objects that match the search criteria.

FIGURE 2-78 Add Filters

- Click Save to save the eDiscovery Set.

MORE INFO ENTERPRISE EDISCOVERY

You can learn more about Enterprise eDiscovery at <https://support.office.com/en-us/article/Plan-and-manage-eDiscovery-cases-d955aeb8-0d48-4291-a8e2-f3b84f17943f>.



EXAM TIP

Remember that document Check Out should be disabled if coauthoring is to take place with documents stored in SharePoint Online.



Thought experiment

SharePoint apps and Contoso's Office 365 deployment

In this thought experiment, apply what you learned about this objective. You can find answers to these questions in the "Answers" section at the end of this chapter.

Your organization has purchased several SharePoint apps to increase user productivity. You are in the process of training an assistant to manage how these apps are used. Which part of the apps section of the SharePoint Admin Center should be used to perform the following tasks?

1. Determine application usage and errors
2. View license utilization
3. Control which SharePoint apps interact with the tenant

Objective summary

- Newsfeeds in SharePoint Online function as an organizational blog where members of the organization can post and reply to posts.
- A newsfeed exists at the SharePoint Online tenancy level. Newsfeeds also exist at the team site level.
- Yammer is a private social network that has features similar to many of the larger social networks.
- To use Yammer with SharePoint Online, you need to configure Yammer as the SharePoint social collaboration option.
- Every user who will coauthor a document needs to have appropriate permissions to edit the document.
- If a document is checked out by an author, the document is locked until the check out is released, which blocks coauthoring.
- Project Online is a stand-alone web service that provides browser-based portfolio and project management tools.

- Excel Services is used when a file hosted in an on-premises SharePoint deployment is opened in a browser.
- Visio Services allows Visio diagrams stored SharePoint Online to be viewed in a browser without requiring a full Visio client or Visio Viewer.
- OneDrive for Business allows users to store, sync, and share work files.
- Whether users can share OneDrive for Business documents with external users depends on the settings in the SharePoint Online tenancy.
- eDiscovery allows you to configure search and hold for the purposes of litigation and investigation.

Objective review

Answer the following questions to test your knowledge of the information in this objective. You can find the answers to these questions and explanations of why each answer choice is correct or incorrect in the “Answers” section at the end of this chapter.

1. Which of the following can block collaboration when configured for a SharePoint Online document library?
 - A. Disabling major versions
 - B. Enabling major versions
 - C. Disabling minor versions
 - D. Enabling check out
2. You want to block users of OneDrive for Business from sharing documents with people external to the organization. Users should still be able to share documents with other users who have accounts in your organization’s Office 365 tenancy. Which of the following steps can you take to accomplish this goal with a minimum of administrative effort?
 - A. Configure the Don’t Allow Sharing Outside Your Organization option at the site collection level
 - B. Configure the Allow External Users Who Accept Sharing Invitations And Sign In As Authenticated Users option at the site collection level
 - C. Configure the Don’t Allow Sharing Outside Your Organization option at the SharePoint Online tenancy level
 - D. Configure the Allow External Users Who Accept Sharing Invitations And Sign In As Authenticated Users option at the site collection level

- 3.** You want to block OneDrive for Business users from sending links that allow anonymous users to access documents stored in SharePoint Online. Users should still be able to share documents with external users that have Microsoft or Office 365 accounts. Which of the following steps could you take to accomplish this goal?
- A.** Configure the Allow External Users Who Accept Sharing Invitations And Sign In As Authenticated Users option at the site collection level
 - B.** Configure the Don't Allow Sharing Outside Your Organization option at the SharePoint Online tenancy level
 - C.** Configure the Allow External Users Who Accept Sharing Invitations And Sign In As Authenticated Users option at the site collection level
 - D.** Configure the Don't Allow Sharing Outside Your Organization option at the site collection level

Answers

This section contains the solutions to the thought experiments and answers to the objective review questions in this chapter.

Objective 2.1: Thought experiment

1. Change the sharing settings at the SharePoint Online tenancy level.
2. It will be necessary to modify the sharing settings of each site collection to remove the external user's access.

Objective 2.1: Review

1. **Correct answer:** A
 - A. **Correct:** An invitation to access shared content sent to an external user from an Office 365 SharePoint site collection remains valid for 7 days.
 - B. **Incorrect:** An invitation to access shared content sent to an external user from an Office 365 SharePoint site collection remains valid for 7 rather than 14 days.
 - C. **Incorrect:** An invitation to access shared content sent to an external user from an Office 365 SharePoint site collection remains valid for 7 rather than 21 days.
 - D. **Incorrect:** An invitation to access shared content sent to an external user from an Office 365 SharePoint site collection remains valid for 7 rather than 28 days.
2. **Correct answer:** B
 - A. **Incorrect:** This will block all sharing in all site collections in the tenancy.
 - B. **Correct:** This will only allow sharing to be performed with authenticated users in all site collections.
 - C. **Incorrect:** While this will accomplish the overall goal of requiring all external users to authenticate to access shared content, it will not do so with a minimum amount of administrative effort.
 - D. **Incorrect:** This will block sharing of all content in each site collection.
3. **Correct answers:** A and D
 - A. **Correct:** You must enable the ability to use anonymous guest links at both the tenancy level and the site collection level to allow anonymous access to documents hosted within that site collection.
 - B. **Incorrect:** Configuring this option at the site collection level would block users from sending anonymous links.
 - C. **Incorrect:** Configuring this option at the tenancy level will block the option for allowing anonymous links at the site collection level.
 - D. **Correct:** You must enable the ability to use anonymous guest links at both the tenancy level and the site collection level to allow anonymous access to documents hosted within that site collection.

4. **Correct answers:** A and C
- A. **Correct:** To allow users to send anonymous links in other site collections, this option needs to be configured.
 - B. **Incorrect:** This option will block anonymous links in other site collections.
 - C. **Correct:** This option will block anonymous links for the specific site collection.
 - D. **Incorrect:** This option will allow anonymous links for the specific site collection.
5. **Correct answer:** D
- A. **Incorrect:** While this will accomplish the goal, it will not do so with a minimum amount of administrative effort. Performing this task at the tenancy level will apply this setting across all site collections.
 - B. **Incorrect:** This will allow sharing of content to people external to your organization who have Microsoft accounts.
 - C. **Incorrect:** This will allow sharing of content to people external to your organization who have Microsoft accounts as well as to anonymous people.
 - D. **Correct:** Configuring this setting at the SharePoint Online tenancy level will block sharing at the site collection and document levels.

Objective 2.2: Thought experiment

1. Microsoft support can recover site collections up to 14 days after being removed from the Recycle Bin.
2. You need to remove the site from the Recycle Bin, as site collection URLs must be unique.

Objective 2.2: Review

1. **Correct answer:** C
 - A. **Incorrect:** The amount of storage space allocated uses the formula 10 GB plus 500 MB per user. This would mean that 30 GB, rather than 10 GB, will be available.
 - B. **Incorrect:** The amount of storage space allocated uses the formula 10 GB plus 500 MB per user. This would mean that 30 GB, rather than 20 GB, will be available.
 - C. **Correct:** The amount of storage space allocated uses the formula 10 GB plus 500 MB per user. This would mean that 30 GB will be available.
 - D. **Incorrect:** The amount of storage space allocated uses the formula 10 GB plus 500 MB per user. This would mean that 30 GB, rather than 40 GB, will be available.
2. **Correct answer:** C
 - A. **Incorrect:** The maximum amount of storage that can be allocated to an individual SharePoint Online site collection is 1 TB, not 100 GB.
 - B. **Incorrect:** The maximum amount of storage that can be allocated to an individual SharePoint Online site collection is 1 TB, not 500 GB.

- C. **Correct:** The maximum amount of storage that can be allocated to an individual SharePoint Online site collection is 1 TB.
 - D. **Incorrect:** The maximum amount of storage that can be allocated to an individual SharePoint Online site collection is 1 TB, not 5 TB.
3. **Correct answer:** D
- A. **Incorrect:** You should configure the quota warning email threshold. Setting the quota to 48 GB will not notify you that 48 GB of a 50 GB quota has been consumed. It will simply limit the site collection storage to 48 GB.
 - B. **Incorrect:** You should configure the quota warning email threshold. Setting the quota to 52 GB will not notify you that 48 GB of a 50 GB quota has been consumed. It will simply limit the site collection storage to 52 GB.
 - C. **Incorrect.** Setting the email warning threshold to 48 percent will mean a notification will be sent when 24 GB of space is consumed, rather than 48 GB.
 - D. **Correct:** You should set the quota alert email threshold to 96 percent. The quota is already set to 50 GB, so this will send an email when 48 GB has been consumed.
4. **Correct answer:** D
- A. **Incorrect:** You can alter which users are assigned site collection administrator privileges after site collection creation.
 - B. **Incorrect:** Storage Quota can be altered after site collection creation.
 - C. **Incorrect:** Server Resource Quota can be altered after site collection creation.
 - D. **Correct:** You cannot alter the primary language setting of a site collection after site collection creation.
5. **Correct answer:** B
- A. **Incorrect:** Site collections remain in the Recycle Bin for 30 days, not 15 days.
 - B. **Correct:** Site collections remain in the Recycle Bin for 30 days.
 - C. **Incorrect:** Site collections remain in the Recycle Bin for 30 days, not 60 days.
 - D. **Incorrect:** While some older documentation might suggest that site collections remain in the Recycle Bin for 90 days, the figure listed in current documentation and in the actual SharePoint Online interface is 30 days.
6. **Correct answers:** A, B, and C
- A. **Correct:** You cannot recover a site collection from the Recycle Bin if the resource quota has been exceeded.
 - B. **Correct:** You cannot recover a site collection from the Recycle Bin if the storage quota has been exceeded.
 - C. **Correct:** You will be unable to recover a site collection from the Recycle Bin that was deleted more than 50 days ago.
 - D. **Incorrect:** You will be able to recover a site collection that was deleted less than 20 days ago assuming that usage quotas and storage quotas have not been exceeded.

7. Correct answer: B

- A. Incorrect:** Only 1 primary site collection administrator, rather than 5, can be assigned to a site collection.
- B. Correct:** Only 1 primary site collection administrator can be assigned to a site collection.
- C. Incorrect:** Only 1 primary site collection administrator, rather than 2, can be assigned to a site collection.
- D. Incorrect:** Only 1 primary site collection administrator, rather than 10, can be assigned to a site collection.

8. Correct answer: B

- A. Incorrect:** A storage quota restricts how much storage space a site collection can consume, not how much of the server resources in terms of RAM and CPU it can consume.
- B. Correct:** A resource quota allows you to restrict how much RAM and CPU resources a specific site collection can consume.
- C. Incorrect:** Assigning a user as a site collection administrator will not ensure that a specific site collection does not consume all of the RAM and CPU resources available to the tenancy.
- D. Incorrect:** While purchasing additional user licenses will increase the overall server resource quota, it will not stop a specific site collection from consuming all those resources.

Objective 2.3: Thought experiment

1. You use the Monitor Apps section to determine application usage and review errors.
2. You use the Manage Licenses section to view SharePoint app license utilization.
3. You use the App Permissions section to configure which apps can access the SharePoint Online tenant.

Objective 2.3: Review

1. Correct answer: D

- A. Incorrect:** Collaboration can function when the major versions versioning functionality is disabled.
- B. Incorrect:** Collaboration can function when the major versions versioning functionality is enabled.
- C. Incorrect:** Minor versioning allows previous versions of documents to be restored, but does not block collaboration.
- D. Correct:** If users check out files when opened, other users will not be able to collaborate on that file until the file is closed.

2. Correct answer: C

- A. Incorrect:** While this will function, it would take an extraordinary amount of effort to perform this task for each user's OneDrive for Business site collection.
- B. Incorrect:** This would allow sharing with external users with Microsoft or Office 365 accounts. It would also require extraordinary effort to perform this task for each user's OneDrive for Business site collection.
- C. Correct:** Configuring this option at the SharePoint Online tenancy level would accomplish your goal with a minimum of administrative effort.
- D. Incorrect:** This would allow sharing with external users with Microsoft or Office 365 accounts.

3. Correct answer: A

- A. Correct:** This would allow sharing with external users with Microsoft or Office 365 accounts.
- B. Incorrect:** Configuring this option at the SharePoint Online tenancy level would block users from sharing documents with users that had Microsoft or Office 365 accounts.
- C. Incorrect:** While this would work, it would also require extraordinary effort to perform this task for each user's OneDrive for Business site collection.
- D. Incorrect:** This option would block sharing with external users. It would also take an extraordinary amount of effort to perform this task for each user's OneDrive for Business site collection.

Index

A

- ACEs. *See* Access Control Entries (ACEs)
- activation management
 - Office 365 ProPlus 8–13
 - Office for Mac 19–23
- ActiveSync
 - configuration of 295–298
 - disabling 295–298
- Add A Domain page 217
- Add Allowed Domain dialog box 248
- Add Blocked Domain dialog box 246–247
- Add-MailboxPermission cmdlet 175
- Add-RecipientPermission cmdlet 170
- address books
 - adding external contacts to 183–184
- administrator privileges 5
- administrators
 - OneDrive for Business 132–134
 - site collection 99–101
- Agents worksheet 58
- Allow Anonymous Attendees To Dial-Out option 221
- allowed domain list 302–303
- Allowed IP Address WebPage Dialog 240–241
- anonymous sharing 129
- anti-malware notifications 231–233
- anti-malware policies 229–239
 - anti-malware notifications 231–233
 - creating 235–238
 - default 233–235
 - Enable-MalwareFilterRule cmdlet 239
 - Get-MalwareFilterPolicy cmdlet 238
 - malware detection response settings 230–231
 - New-MalwareFilterPolicy cmdlet 238
 - New-MalwareFilterRule cmdlet 238
 - Remove-MalwareFilterPolicy cmdlet 238
 - Set-MalwareFilterPolicy cmdlet 238
 - Set-MalwareFilterRule cmdlet 239
 - Windows PowerShell cmdlets 238–239
- anti-spam policies
 - advanced policy options 250–252
 - allow lists 246–247
 - applying 253–254
 - block lists 244–246
 - bulk actions 243–244
 - connection filter policies 239–242
 - international spam 248–251
 - Outbound Spam policy 254–256
 - Quarantine 256–257
 - spam confidence levels 252–253
 - spam filter policies 242–254
 - Windows PowerShell cmdlets 254
- Apple App Store 6–7
- Applied To setting 235, 253
- Apply Sensitive Word List 252
- App Store 134–135
- App-V package 30
- Archive Mailbox dialog 199–200
- archives
 - accessing 273
 - client requirements for 273–277
 - enabling personal 196–201
 - importing PST files 275–278
 - transferring items to 273–274
- Auto Account Setup page 65

B

- blocked domain list 303–304
- BlockedDomains parameter 303
- blocked IP address ranges 240
- Blocked IP Address webpage dialog box 240
- blocked sender list 245

Booking Delegates page

- Booking Delegates page 179–180, 182
- Booking Options page 180, 182
- Bring Your Own Device (BYOD) scenarios
 - self-provisioning software in 5
- bulk add
 - of email addresses 157–158
- Bulk Assign Retention Policy page 212
- bulk email 243–244
- Business clients
 - Click-to-Run for 70–72
 - configuring Office 365 for 64–75
 - MSI for 70–72
 - Office Web Apps for 69–70
 - Skype for Business Online for 67–69

C

- central deployment
 - of Office 365 ProPlus 29
- CIDR notation 239
- Click-to-Run 30, 70–73
- Click-to-Run installation source 30
- Client Access servers 263
- client requirements
 - for archives 273–277
- coauthoring 122–125
- collaboration 118–139. *See also* sharing
 - App Store 134–135
 - coauthoring 122–125
 - Excel Services 125
 - newsfeeds 119–122
 - OneDrive for Business 126–133
 - Project Online 125
 - Visio Services 125
 - Yammer 121–122
- communication settings
 - configuring end-user 215–222
 - managing external 302–310
 - Skype consumer connectivity 304–305
- Conditional Sender ID Filtering: Hard Fail 252
- configuration
 - ActiveSync 295–298
 - additional email addresses 147–168
 - connection filters 239–242
 - email account 64–67
 - Exchange Online 147–168
 - external user sharing 81–98
 - Office 365 ProPlus 28–29

- of telemetry and reporting 36–47
- OWA access 293–295
- personal archive policies 196–201
- primary email address 155–156
- site collection administrators 99–100
- site collections 110
- Skype for Business Online
 - end-user communication settings 215–222
 - external communication settings 216–220
 - presence settings 215–216
 - user options 220–222
- spam filter policies 242–254
- Telemetry Agent 59–60
- Telemetry Processor 41–45
- Configuration.xml 32–36
 - attributes 33–35
- connection filter policies 239–242
 - Get-HostedConnectionFilterPolicy cmdlet 242
 - Set-HostedConnectionFilterPolicy cmdlet 242
- connectors. *See also* receive connectors;
See also send connectors
- contacts
 - external 183–184
- Customer Experience Improvement Program 22, 44
- Custom report worksheet 58
- cutover migration 266–268

D

- Data Connection Settings dialog box 45
- deactivation
 - of Office 365 ProPlus 10–13
- Deadline attribute 34
- default anti-malware policy 233–235
- default email address 148
- Default MRM Policy 206–208
- default retention policy 206–208
- Delete All Attachments And Use Custom Alert Text
 - option 230
- Delete All Attachments And Use Default Alert Text
 - option 230
- Delete Entire Message option 230
- Delete Message option 244
- deployment
 - activation management 8–13
 - central 29
 - Configuration.xml 32–36
 - IT, of Office 365 ProPlus 24–36
 - manual 25–30

- Office 365 ProPlus
 - central deployment 29
 - manual deployment 25–30
- Office Deployment Tool 5, 30–32
- restricting software 2–5
- Telemetry Agent 55–57
- Telemetry Dashboard 37–47
- Telemetry Processor 39–47
- user-driven 1–26
- Deployments worksheet 58
- Disable-MalwareFilterRule cmdlet 239
- Display attribute 33
- distribution groups
 - dynamic 185, 191–194
 - join settings 186
 - leave settings 187
 - mail-enabled security groups 188–190
 - managing 185–194
 - New-DistributionGroup Windows PowerShell cmdlet 190
 - Set-DistributionGroup Windows PowerShell cmdlet 188
- Document details worksheet 57
- Document issues worksheet 57
- documents
 - anonymous sharing of 129
 - check out of 122–123
 - coauthoring 122–125
 - permissions for sharing 130
 - sharing with external users 91–93
 - versioning 122, 123–124
 - viewing who is sharing 129–130
- Document sessions worksheet 58
- Documents worksheet 57
- Domain Allow List 246, 247
- domain controller 47
- domains
 - Add a Domain page 217
 - Add Blocked Domain dialog box 246
 - allowed 302–303
 - blocked 246–247, 303–304
 - Domain Allow List 246–247
 - Get-CsTenantFederationConfiguration cmdlet 302, 303–304
 - New-CsEdgeAllowAllKnownDomains cmdlet 302
 - New-CsEdgeAllowList cmdlet 302
 - New-CsEdgeDomainPattern cmdlet 302
 - removing allowed 303
- dynamic distribution groups 185, 191–194

E

- eDiscover
 - in-place holds 286–292
- eDiscovery 278–291
 - in-place holds 278
 - litigation holds 278–286
- eDiscovery requests 196
- email account
 - adding 64–67
- email addresses
 - adding additional 149–154
 - adding to mail contact 184
 - bulk add of 157–158
 - configuring additional 147–168
 - managing 148–158
 - managing reply-to address 154–157
 - primary 148
 - changing 154–155
 - configuring 155–156
 - secondary 154
 - SIP addresses
 - adding 158–162
 - changing 161–164
 - managing 158–167
 - removing 165–166
- email messages
 - allow lists 246–247
 - anti-malware policies 229–239
 - archiving 196–201
 - block lists 244–246
 - connection filter policies 239–242
 - Delete All Attachments And Use Custom Alert Text 230
 - Delete All Attachments And Use Default Alert Text 230
 - Delete Entire Message 230
 - importing from PST files 274–277
 - inbox rules for 274
 - in-place holds 278, 286–292
 - litigation holds 278–286
 - moving to archives 273–274
 - quarantine of 256–257
 - retention of 201–214, 274
 - spam filter policies 242–254
- Embed Tags In HTML 252
- Empty Messages 251
- Enable-MalwareFilterRule cmdlet 239
- Enable Safe List option 241

end-user communication settings

- end-user communication settings
 - for Skype for Business Online 215–222
- Enterprise eDiscovery 135–138
 - adding sources 136–138
 - case creation 135–136
- equipment mailboxes 178–181
- Equipment parameter 181
- ESRA. *See* EdgeSync replication account (ESRA)
- Excel
 - installing on mobile devices 6–8
- Excel Services 125
- Exchange hybrid deployment 262–263
- Exchange Online
 - adding additional email addresses 149–154
 - anti-malware policies 229–239
 - anti-spam policies 239–258
 - configuration of 147–168
 - default configuration of 229
 - delegating permissions in 167–175
 - hybrid deployment 262–263
 - managing reply-to address 154–157
 - managing SIP addresses 158–167
 - personal archive policies 196–201
 - planning for 272–297
 - ActiveSync 295–298
 - client requirements for archives 273–277
 - eDiscovery 278–291
 - OWA access 293–295
- Exchange Online mailbox
 - configuring access to 64–67
- ExcludeApp attribute 33
- external communications 301–304
 - global 301–309
 - Skype for Business Online 301–309
- external communication settings
 - Skype for Business Online 216–220
- external contacts
 - managing 183–184
- external users 81–98
 - removing access for 93–96
 - sharing with 88–93
 - documents 91–93
 - enabling globally 83–85
 - enabling per site collection 86–89
 - links 93–94
 - sites 89–91
- understanding 82
- use rights of 82

F

- First Things First page 27
- folders
 - sharing 130–131
- For Compliance, Turn Off Non-Archived Features
 - option 221
- Form Tags In HTML 252
- Frame Or IFrame Tags In HTML 251
- From Address setting 232
- From Name setting 232
- Full Access permission 173–175

G

- Get-CsTenantFederationConfiguration cmdlet 302, 303, 303–304
- Get-HostedConnectionFilterPolicy cmdlet 242
- Get-HostedContentFilterPolicy cmdlet 254
- Get-Mailbox cmdlet 286, 295, 298
- Get-MalwareFilterPolicy cmdlet 238
- Get-QuarantineMessage cmdlet 257
- global external sharing options 83–85
- Group Policy
 - configuration of telemetry 36–47
 - enabling telemetry through 46–54
- groups
 - distribution 185–194
 - creating 185–187
 - New-DistributionGroup Windows PowerShell cmdlet 190
 - Set-DistributionGroup Windows PowerShell cmdlet 188
 - security 185
 - joint settings 190
 - leave settings 190
 - mail-enabled 188–190

H

- holds
 - in-place 278
 - litigation 278–286
- hybrid deployment 262–263
- hygiene. *See* message hygiene

I

- Image Links To Remote Sites 251
- IMAP migration 268–270
- Import a File page 276
- Import And Export Wizard 275
- Import Outlook Data File page 277–278
- inbox rules 274
- in-place archives 196–201
- In-Place eDiscovery & Hold wizard 287–291
- in-place hold 278, 286–291
- installation
 - Office 365 ProPlus 25–30
 - Office Deployment Tool 30–32
 - Office for Mac 14–19
 - Telemetry Processor 40–41
- International Spam settings 248–251
- IP addresses
 - adding IP address list 239
 - Allowed IP Address WebPage Dialog 240
 - blocked 240
 - Blocked IP Address webpage dialog box 240
 - specifying safe 239–240
- IP Allow list 239, 242
- IP block list 239, 242
- IT deployments
 - Office Deployment Tool 30–32
 - of Office 365 ProPlus 24–36
 - central deployment 29
 - manual deployment 25–30

J

- JavaScript Or VBScript In HTML 251

K

- Key Management Services (KMS) 29

L

- Language ID attribute 34
- legal hold. *See* litigation hold
- licenses 1, 5, 9–10, 13, 31, 47
- links
 - sharing with external users 93–94

- litigation hold 278
 - enabling 278–283
 - in-place hold 286–291
 - managing, with PowerShell 285–286
 - removing 284–286
 - Set-Mailbox Windows PowerShell cmdlet 285
- LitigationHoldDuration parameter 286
- local administrator privileges 5
- Logging attribute 34
- Lync Online. *See* Skype for Business

M

- Mac OS X operating system
 - Office for Mac for 13–24
- mailboxes
 - applying retention policies to 209–214
 - archive
 - accessing 273
 - client requirements for 273–277
 - enabling personal 175–180
 - importing PST files 274–277
 - transferring items to 273–274
 - creating shared 175–178
 - delegating permissions 167–175
 - Full Access permission 173–175
 - Send As permission 168–170
 - Send on Behalf permission 170–173
 - equipment 178–181
 - inbox rules 274
 - in-place holds on 277, 286–292
 - litigation holds on 278–290
 - moving 263
 - personal archive policies 196–201
 - resource 177–182
 - room 181–183
 - shared 175–177
- mailbox migration strategy 262–273
 - comparison 270–271
 - cutover migration 266–268
 - IMAP migration 268–270
 - remote move migration 262–263
 - staged migration 264–266
- mail-enabled security groups 188–190
- malware
 - anti-malware notifications 231
 - anti-malware policies 229–239
 - default anti-malware policy 233–235

Malware Filter list

- detection response settings 230–231
- Enable-MalwareFilterRule cmdlet 239
- Get-MalwareFilterPolicy cmdlet 238
- New-MalwareFilterPolicy cmdlet 238
- New-MalwareFilterRule cmdlet 238
- policy creation 235–238
- Remove-MalwareFilterPolicy cmdlet 238
- Set-MalwareFilterPolicy cmdlet 238
- Set-MalwareFilterRule cmdlet 239
- Malware Filter list 237
- Manage Administrators dialog box 100–101
- Manage Site Collection Owners 132
- manual deployment
 - Office 365 ProPlus 25–30
- meeting invitations 305–306
- Meet OneDrive page 27–28
- Messages From External Senders setting 232
- Messages From Internal Senders setting 232
- message transport. *See* transport
- Messaging Records Management (MRM) 201
- Microsoft Customer Experience Improvement Program 44
- migration
 - batches 264, 265
 - comparison 270–271
 - cutover 266–268
 - endpoints 263
 - IMAP 268–270
 - mailboxes 262–274
 - remote move 262–263
 - staged 264–266
- mobile devices
 - Office 365 and 6–8
- Move Message To Junk Email Folder option 243
- MRM. *See* Messaging Records Management
- MRSProxy service 263
- MSI 70–73

N

- NAT. *See* network address translation (NAT)
- NDR Backscatter 252
- New Anti-Malware Policy page 237
- New-CsEdgeAllowAllKnownDomains cmdlet 302
- New-CsEdgeAllowList cmdlet 302
- New-CsEdgeDomainPattern cmdlet 302
- New Distribution Group dialog box 185, 188
- New-DistributionGroup Windows PowerShell cmdlet 188, 190

- New-DynamicDistributionGroup Windows PowerShell cmdlet 193
- New-HostedContentFilterPolicy cmdlet 254
- New-Mailbox cmdlet 181
- New-MailboxSearch Windows PowerShell cmdlet 292
- New-Mailbox Windows PowerShell cmdlet 177, 183
- New-MailContact Windows PowerShell cmdlet 184
- New-MalwareFilterPolicy cmdlet 238
- New-MalwareFilterRule cmdlet 238
- New Retention Policy dialog box 206
- New-RetentionPolicyTag Windows PowerShell cmdlet 203
- newsfeeds 119–122
- New Shared Mailbox dialog box 176
- New Shared Mailbox page 176
- New Tag dialog box 202–203
- NICs. *See* network interface cards (NICs)
- notifications
 - anti-malware 231–233
- Notify Administrators About Undelivered Messages
 - From External Senders option 231
- Notify Administrators About Undelivered Messages
 - From Internal Senders option 231
- Notify External Senders option 231
- Notify Internal Senders option 231
- Numeric IP Address In URL 251

O

- Object Tags In HTML 252
- Office 365
 - Business client configuration 64–75
 - console page 15
 - mobile devices and 6–8
 - signing in, on Mac 14
 - subscription types 4
 - user-driven client deployments 1–26
- Office 365 ProPlus
 - activation management 8–13
 - central deployment of 29
 - configuration 28–29
 - deactivation 10–13
 - IT deployments of 24–36
 - licenses 1, 5, 9–10
 - manage user software 2–5
 - manual deployment 25–30
 - operating systems 5
 - reactivation 12–13
 - reduced functionality mode 9

- restriction of self-provisioning of 2–5
- software included with 2, 5
- Office 2013 Group Policy administrative template 46–47
- Office Applications To Exclude From Office Telemetry Agent Reporting policy 53–54
- OfficeClientEdition attribute 33
- Office Deployment Tool 5, 30–32
 - Configuration.xml 32–36
- Office for Mac 13–24
 - activation 19–23
 - installation 14–19
 - Software License Agreement 16
- Office on Demand 68–69
- Office Solutions To Exclude From Telemetry Agent Reporting policy 54–55
- Office Telemetry. *See* telemetry
- Office Telemetry Log 59–61
- Office Web Apps 69–70
- OneDrive for Business 126–133
 - accessing 126–127
 - administering 132–134
 - collaborating with 127–131
- OneNote
 - installing on mobile devices 6–8
- operating systems 5, 39
- Outbound Spam policy 254–256
- Outbound Spam Preferences page 255
- Outlook client 64–67
- Outlook Web App (OWA) 273
 - access configuration 293–295
 - disabling 293–295
 - offline access for 264
- Overview worksheet 57
- OWA. *See* Outlook Web App (OWA)

P

- permissions
 - Add-MailboxPermission cmdlet 175
 - delegating 167–175
 - for accessing documents 130
 - for coauthoring 122
 - for shared mailboxes 175–176
 - Full Access 173–175, 175
 - hybrid deployment 262
 - Remove-MailboxPermission cmdlet 175
 - Send As 168–170, 176
 - Send on Behalf 170–173, 176

- personal archives
 - enabling 196–201
 - policy configuration 196–201
- personal store (.pst) files 196, 274–276
- platform-as-a-service. *See* PaaS
- pooled storage model 105–107
- PowerPoint
 - installing on mobile devices 6–8
- presence settings 215–216
- primary email address 148
 - changing 148, 154–155
 - configuring 155–156
 - configuring new 153
- Product ID attribute 34
- Project Online 125
- PST files 196
 - importing messages from 274–277
- public IM connectivity 304–305
- Public Websites
 - SharePoint Online 102
- push notifications
 - disabling 306–308

Q

- Quarantine 256–257
- Quarantine Message option 243

R

- reactivation
 - of Office 365 ProPlus 12–13
- Record Conversations And Meetings option 221
- Recycle Bin 113, 114
- reduced functionality mode 9
- registry
 - configuration of Telemetry Agent through 59–60
- Release-QuarantineMessage cmdlet 257
- Release The Message And Report It As A False Positive option 257
- Release The Message Without Reporting It As A False Positive option 257
- remote move migration 262–263
- Remove attribute 34
- Remove-HostedContentFilterPolicy cmdlet 254
- Remove-MailboxPermission cmdlet 175
- RemovemailboxSearch cmdlet 292
- Remove-MalwareFilterPolicy cmdlet 238

Remove-RecipientPermission cmdlet

- Remove-RecipientPermission cmdlet 170
- reply-to email address 148
 - managing 154–157
- resource mailboxes
 - equipment mailboxes 178–181
 - managing 177–182
 - room mailboxes 181–183
- resource quotas 100–102
- Restore Site Collections page 115
- retention period 201
- retention policies
 - applying to mailboxes 209–214
 - creating custom 204–208
 - default 206–208
 - for moving messages 274
 - review and modify default 206–208
- retention tags 201–203
- room mailboxes 181–183
- Room parameter 183

S

- Safe List checkbox 239
- secondary email addresses 154
- security groups 185
 - join settings 190
 - leave settings 190
 - mail-enabled 188–190
- Select Language dialog box 249–250
- Select Region dialog box 249–250
- Select Send As dialog box 169
- self-service deployment. *See* user-driven client deployments
- Send As permission 168–170, 176
- Sender Allow List 246, 247
- Send on Behalf permission 170–173, 176
- Session Initiation Protocol (SIP) addresses
 - adding 158–162
 - changing 161–164
 - managing 158–167
 - removing 165–166
- Set-CASMailbox Windows PowerShell cmdlet 295, 298
- Set-CsPushNotificationConfiguration cmdlet 307
- Set-CsTenantFederationConfiguration cmdlet 304
- Set-CsTenantPublicProvider cmdlet 305
- Set-DistributionGroup Windows PowerShell cmdlet 188, 190
- Set-HostedConnectionFilterPolicy cmdlet 242
- Set-HostedContentFilterPolicy cmdlet 254
- Set-Mailbox cmdlet 154, 160, 164, 173
- Set-MailboxSearch Windows PowerShell cmdlet 292
- Set-Mailbox Windows PowerShell cmdlet 212, 285
- Set-MailContact Windows PowerShell cmdlet 184
- Set-MalwareFilterPolicy cmdlet 238
- Set-MalwareFilterRule cmdlet 239
- Set-RetentionPolicy Windows PowerShell cmdlet 208
- shared mailboxes
 - creating 175–178, 176–179
 - permissions or 175
- Shared parameter 177
- SharePoint Admin Center 84
- SharePoint Apps 134–135
- SharePoint Online 81–146
 - collaboration 118–139
 - App Store 134–135
 - coauthoring 122–125
 - Excel Services 125
 - newsfeeds 119–122
 - OneDrive for Business 126–133
 - Project Online 125
 - Visio Services 125
 - Yammer 121–122
- Enterprise eDiscovery 135–138
- external user sharing configuration 81–98
- pooled storage model 105–107
- Public Websites 102
- site collections
 - administrators 99–101
 - creating 98–118, 109–111
 - deleting 111–113
 - enabling external sharing per 86–89
 - managing 109–115
 - resource quotas 100–102
 - restoring deleted 113–115
 - storage quota for 103–108
 - tenancy level 87, 95
- Share Site dialog box 89–90
- sharing. *See also* collaboration
 - anonymous 129
 - external. *See* external users
 - folders 130–131
 - with OneDrive for Business 127–131
- SIP addresses. *See* Session Initiation Protocol (SIP) addresses
- site collections
 - administrators 99–101
 - creating 98–118, 109–111
 - deleting 111–113
 - external sharing of 86–89
 - managing 109–115

- per-site storage management 106
 - resource quotas 100–102
 - restoring deleted 113–115
 - storage limits for 107–109
 - storage quota for 103–108
 - URLs for 114
 - Site Collection Storage Management 106
 - sites
 - sharing with external users 89–91
 - Skype for Business Admin Center 301–302, 304
 - Skype for Business Online
 - allowed domain list 302–303
 - audio and video settings 221
 - blocked domain list 303–304
 - consumer connectivity 304–305
 - default configuration of 229
 - end-user communication settings 215–222
 - presence 215–216
 - external communication settings 216–220
 - for Business client 67–69
 - global external communication settings 301–309
 - meeting invitations 305–306
 - presence settings 215–216
 - public IM connectivity 304–305
 - push notifications 306–308
 - SIP addresses for 158–167
 - user options 220–222
 - Slipstreamed Servicing 70
 - SMTP. *See* Single Mail Transfer Protocol (SMTP)
 - software deployment
 - on mobile devices 6–8
 - restricting 2–5
 - Software License Agreement
 - Office for Mac 16
 - software licenses 9–10, 13, 31, 47
 - Solution details worksheet 58
 - Solution issues worksheet 58
 - Solution sessions worksheet 58
 - Solutions worksheet 58
 - SourcePath attribute 33
 - spam confidence levels 252–253
 - Spam Confidence Level (SCL) rating 252–253
 - spam filter policies 242–254
 - advanced policy options 250–252
 - allow lists 246–247
 - applying 253–254
 - block lists 244–246
 - bulk actions 243–244
 - international spam 248–251
 - Outbound Spam policy 254–256
 - priority of 242–243
 - Quarantine 256–257
 - spam confidence levels 252–253
 - Windows PowerShell cmdlets 254
 - Spam Filter tab 242–243
 - Specify Custom Tags For Office Telemetry
 - Data policy 51–52
 - Specify The UNC Path To Store Office Telemetry
 - Data policy 51
 - SPF. *See* send policy framework (SPF) records
 - SPR Record: Hard Fail 252
 - SQL Server database 38–39
 - SQL Server Express 38
 - staged migration 264–266
 - Standard Operating Environment (SOE) 5
 - storage
 - per-site storage management 106
 - pooled storage model 105–107
 - purchasing additional 104–105
 - setting site collection limits 107–109
 - viewing allocated 103
 - storage quota
 - for site collection 103–108
 - System Info worksheet 61
- ## T
- TargetVersion attribute 34
 - telemetry
 - configuration of 36–47
 - enable through Group Policy 46–54
 - report user issues 59–61
 - Telemetry Agent 54–55
 - configuration, through registry 59–60
 - deployment 55–57
 - Telemetry Dashboard
 - deployment of 37–47
 - policies 48
 - search for 38
 - SQL server versions for 38–39
 - worksheets 57–58
 - Telemetry Log 59–61
 - Telemetry Processor 38
 - configuration 41–45
 - deployment 39–47
 - installation 40–41
 - operating systems for 39

Telemetry Processor worksheet

Telemetry Processor worksheet 58
Turn On Communication With Skype Users And Users
Of Other Public IM Service Providers option 304
Turn On Data Uploading for Office Telemetry
Agent policy 49–50
Turn On Privacy Settings In Office Telemetry
Agent policy 53
Turn On Telemetry Data Collection policy 48

U

UpdatePath attribute 34
Updates attribute 34
URL Redirect To Other Port 251
URL To .Biz Or .Info Websites 251
User Account Control dialog box 26
user-based licensing 71
user-driven client deployments
activation management 8–13
management of 1–26
on mobile devices 6–8
restriction of self-provisioning of 2–5
User Mailbox dialog 200
User Mailbox properties page 151–152, 283–284
user options
Skype for Business Online 220–222
Version attribute 33
versioning 122, 123–124
Visio Services 125

W

Web Bugs In HTML 252
Welcome to Office page 26
Windows Security dialog box 66
Windows Server 2012 R2 domain controller 47
Word
installing on mobile devices 6–8
worksheets
Telemetry Dashboard 57–58

Y

Yammer 119, 121–122

About the author



ORIN THOMAS is an MVP, a Microsoft Regional Director, an MCT and has a string of Microsoft MCSE and MCITP certifications. He has written more than 30 books for Microsoft Press on topics including Windows Server, Windows Client, Azure, System Center, Exchange Server, Security, and SQL Server. He is an author at PluralSight and is a contributing editor at *Windows IT Pro* magazine. He has been working in IT since the early 1990's and regularly speaks at conferences in Australia and around the world. Orin founded and runs the Melbourne System Center, Security, and Infrastructure Group and is completing a Doctorate in Information Technology at Charles Sturt University. You can follow him on twitter at <http://twitter.com/orinthomas>.