

Your easy, colorful,  
SEE-HOW guide!




# Plain & Simple

# Microsoft Word 2013



Jay Freedman

# Learn the simplest ways to get things done with Microsoft Word 2013



See it.  
Learn it.  
In color.

## Here's WHAT You'll Learn

- Create any type of document, from memos to reports
- Perfect your text with editing and formatting tools
- Add graphics, data, tables, charts, and videos
- Manage page layout, style, and navigation
- Share, print, and publish your work online
- Finish documents faster using templates and themes

## Here's HOW You'll Learn It

- Jump in wherever you need answers
- Follow easy *steps* and *screenshots* to see exactly what to do
- Get handy *tips* for new techniques and shortcuts
- Use *Try This!* exercises to apply what you learn right away

ISBN: 978-0-7356-6938-3



9 780735 669383

9 0000

**U.S.A. \$24.99**

Canada \$26.99

[Recommended]

Microsoft Office/  
Microsoft Word







Microsoft

# **Word 2013 Plain & Simple**

*Jay Freedman*

Copyright © 2013 by Joseph J. Freedman

All rights reserved. No part of the contents of this book may be reproduced or transmitted in any form or by any means without the written permission of the publisher.

ISBN: 978-0-7356-6938-3

1 2 3 4 5 6 7 8 9 QG 8 7 6 5 4 3

Printed and bound in the United States of America.

Microsoft Press books are available through booksellers and distributors worldwide. If you need support related to this book, email Microsoft Press Book Support at [msspinput@microsoft.com](mailto:msspinput@microsoft.com). Please tell us what you think of this book at <http://www.microsoft.com/learning/booksurvey>.

Microsoft and the trademarks listed at <http://www.microsoft.com/about/legal/en/us/IntellectualProperty/Trademarks/EN-US> are trademarks of the Microsoft group of companies. All other marks are property of their respective owners.

The example companies, organizations, products, domain names, email addresses, logos, people, places, and events depicted herein are fictitious. No association with any real company, organization, product, domain name, email address, logo, person, place, or event is intended or should be inferred.

This book expresses the author's views and opinions. The information contained in this book is provided without any express, statutory, or implied warranties. Neither the authors, Microsoft Corporation, nor its resellers, or distributors will be held liable for any damages caused or alleged to be caused either directly or indirectly by this book.

**Acquisitions Editor:** Kenyon Brown  
**Developmental Editor:** Kathryn Duggan  
**Production Editor:** Kristen Borg  
**Editorial Production:** Peter Amirault  
**Technical Reviewer:** Kristen Merritt  
**Copyeditor:** Bob Russell  
**Indexers:** Fred Brown and Bob Pfahler  
**Cover Design:** Twist Creative • Seattle  
**Cover Composition:** Zyg Group, LLC  
**Illustrator:** S4Carlisle Publishing Services

*To Andi, my bashert.*



# Contents

Acknowledgments .....	xv
-----------------------	----

## 1

<b>About this book.....</b>	<b>1</b>
What do you want to do? .....	2
A quick overview .....	3
A few assumptions .....	6
Adapting task procedures for touchscreens.....	7
A final word .....	8

## 2

<b>Introducing Word 2013 .....</b>	<b>9</b>
What's new in Word 2013 .....	10
Starting the Word program .....	12
Exploring the ribbon .....	14
Using the Quick Access Toolbar .....	16
Switching views .....	17
Using built-in keyboard shortcuts .....	18
Opening documents .....	20
Editing a PDF document .....	22
Getting information about a document .....	23
Saving documents .....	24

Exporting a document to other file types .....	26
Recovering lost work .....	28
Using the Read Mode .....	30
Managing your online accounts.....	32
Printing a document .....	34
Finding help in Word .....	36
Finding help on the Internet.....	37

# 3

<b>Creating and revising documents .....</b>	<b>39</b>
Starting a new document .....	40
Selecting text.....	42
Inserting and overtyping text.....	44
Copying and moving Items.....	45
Managing the Office clipboard .....	48
Undoing mistaken actions.....	49
Navigating a document in the Navigation pane.....	50
Navigating by using the search feature .....	51
Replacing existing text.....	54
Using wildcard find and replace.....	56
Organizing topics .....	59
Inserting built-in building blocks.....	61
Creating your own building blocks .....	62
Managing building blocks.....	64

## 4

<b>Correcting and improving the text</b> .....	<b>67</b>
Correcting a spelling or grammar error .....	68
Running a manual spelling or grammar check .....	70
Marking text to ignore spelling .....	71
Adding common misspellings to AutoCorrect. ....	72
Using AutoCorrect entries as shortcuts. ....	74
Setting AutoFormat options .....	76
Getting definitions and synonyms .....	79
Counting words .....	82
Finding a translation .....	83
Changing the proofing language of text .....	86

## 5

<b>Formatting text for best appearance</b> .....	<b>89</b>
Formatting with styles .....	90
Creating and modifying styles .....	94
Using the Styles pane .....	100
Changing the character formatting of text .....	103
Applying highlighting .....	105
Using the Format Painter .....	106
Changing paragraph alignment and indents .....	107
Changing line and paragraph spacing .....	110
Controlling line and page breaks .....	113
Adding borders and shading .....	116
Building a bulleted or numbered list .....	120
Changing the bullets or numbering .....	121

Changing numbering values. ....	126
Using multilevel numbered headings. ....	128
Revealing existing formatting. ....	132

## 6

<b>Building impressive documents. ....</b>	<b>135</b>
Inserting a section break. ....	136
Inserting headers and footers. ....	138
Choosing page size and margins. ....	140
Changing the page orientation. ....	144
Changing the number of columns. ....	148
Applying a border around a page. ....	151
Inserting a cover page. ....	154
Working with the Normal template. ....	156
Finding and downloading templates. ....	159
Customizing an existing template. ....	161
Designing a template. ....	165
Basing a new document on a custom template. ....	168
Designing a template for two-sided printing. ....	170
Using themes and style sets. ....	173

## 7

<b>Making layouts with tables and text boxes. ....</b>	<b>179</b>
Inserting tab stops on the ruler. ....	180
Inserting a simple table. ....	181
Copying an Excel table into Word. ....	183
Converting text to a table and back again. ....	184



Setting tab stops in table cells . . . . .	186
Adding and deleting rows and columns . . . . .	187
Resizing rows and columns . . . . .	188
Setting table alignment . . . . .	189
Setting table text wrapping . . . . .	190
Merging and splitting cells . . . . .	191
Setting cell alignment and direction . . . . .	192
Repeating header rows . . . . .	193
Using table styles for uniform appearance . . . . .	194
Inserting text boxes . . . . .	196
Linking a chain of text boxes . . . . .	198

## 8

<b>Managing data in documents . . . . .</b>	<b>199</b>
Using the Field dialog box . . . . .	200
Inserting fields from the keyboard . . . . .	202
Toggling field codes and updating fields . . . . .	203
Controlling field formatting by using switches . . . . .	205
Inserting Page and Date fields by using shortcuts . . . . .	210
Using bookmarks . . . . .	211
Inserting hyperlinks . . . . .	212
Repeating information by using cross-references . . . . .	216
Inserting content controls . . . . .	217
Grouping content controls for a form . . . . .	222
Using document properties . . . . .	223
Sorting a list . . . . .	225

# 9

## Formatting reports and formal documents..... 227

Making a different first page header or different odd and even pages header.....	228
Unlinking a header.....	232
Extracting text for a header or footer from body text.....	234
Inserting a watermark.....	237
Adding footnotes and endnotes.....	241
Generating a table of contents.....	243
Updating a table of contents.....	248
Modifying table of contents styles.....	249
Using multiple tables of contents.....	252
Indexing a document.....	255
Using multiple indexes.....	258
Making tables of tables and tables of figures.....	262
Creating a bibliography.....	264

# 10

## Making pictures work for you..... 269

Choosing illustration types.....	270
Inserting a picture from your computer.....	274
Inserting an online picture.....	276
Inserting online video.....	278
Inserting a screenshot.....	280
Positioning pictures on the page.....	282
Resizing a picture.....	284
Cropping a picture.....	286

Replacing a picture . . . . .	288
Changing the appearance of a picture . . . . .	290
Removing the background from a picture . . . . .	293
Applying special effects . . . . .	295
Setting a transparent color . . . . .	296

## 11

<b>Adding your own artwork . . . . .</b>	<b>297</b>
Inserting a shape . . . . .	298
Changing the appearance of a shape . . . . .	300
Building charts to display data . . . . .	304
Creating SmartArt diagrams . . . . .	308
Adding WordArt effects . . . . .	312

## 12

<b>Mailing paper or pixels . . . . .</b>	<b>315</b>
Printing a single envelope . . . . .	316
Printing multiple copies of an envelope . . . . .	320
Changing envelope address formatting . . . . .	323
Creating mailing labels and business cards . . . . .	326
Sending a document by email . . . . .	332
Starting a mail merge . . . . .	334
Choosing the recipients . . . . .	337
Adding merge fields . . . . .	341
Adding information with rules . . . . .	343
Finishing the merge . . . . .	346

# 13

<b>Reviewing documents</b>	<b>349</b>
Adding comments	350
Showing and hiding comments	352
Tracking changes	353
Showing and hiding tracked changes	354
Setting options for Track Changes	356
Accepting and rejecting changes	358
Comparing reviewed versions	359
Merging reviewed versions	361

# 14

<b>Sharing and coauthoring in Word</b>	<b>363</b>
Exploring Word Web App	364
Sharing with SkyDrive	370
Working with coauthors	372
Talking to your coauthors	374
Blogging with Word	375
Presenting a document online	378

# 15

<b>Ensuring privacy and security</b>	<b>381</b>
Viewing the Word 2013 Trust Center	382
Changing which files open in Protected View	383
Adding trusted locations and trusted publishers	387
Setting privacy options	390
Using the Document Inspector	392
Protecting a document by using a password	394

Restricting editing and formatting .....	397
Marking a document as read-only or final.....	400
Adding a digital signature.....	403

## 16

<b>Installing and using Apps for Office .....</b>	<b>405</b>
Adding an app from the Office Store .....	406
Using an app in a document.....	410

## 17

<b>Customizing Word.....</b>	<b>413</b>
Customizing the screen.....	414
Customizing the keyboard .....	417
Customizing the Quick Access Toolbar.....	421
Creating a custom tab or group on the ribbon.....	423
Adding tools to a custom group .....	426
Setting general options.....	428
Controlling what is displayed and printed .....	429
Setting spelling and grammar options .....	430
Changing the default file format for saving documents .....	434
Working with advanced options .....	436
Managing styles .....	442
Recording macros.....	444
 Index.....	 447
About the author .....	457



# Acknowledgments

Every book is the product of many hands, and I thank each person who has helped to create this one. Even if I don't know your name, please know that I'm grateful for your efforts.

Special thanks go to Senior Editor Kenyon Brown of O'Reilly Media for asking me to write Microsoft Word 2013 Plain & Simple. His early guidance and encouragement were invaluable.

Developmental Editor Kathi Duggan made hundreds of excellent suggestions that greatly improved the logical flow of the manuscript, and Technical Reviewer Kristen Merritt played an important role in keeping me on the right path. The three of us make quite a team!

Thanks to Senior Production Editor Kristen Borg and copyeditor Bob Russell, who polished my language and helped me to adhere to Microsoft Press standards. We've given Word's Track Changes feature a good workout!

I've answered thousands of questions about Microsoft Word over nearly twenty years in Internet newsgroups and forums. To every one of you who asked those questions, thank you for the inspiration to learn about the mysteries of Word. I also thank all of the Microsoft Office development team members with whom I've had many fruitful discussions, especially Stuart Stuple, Tristan Davis, and Jonathan Bailor.

Most of all, I thank my wife, Andi Freedman, who thought I had retired months ago. Soon...

# Mailing paper or pixels

One of the most common uses of Microsoft Word 2013 is the creation of documents that are to be sent to other people. The documents might be printed on paper and mailed in an envelope, or they might be attached to an email message. They can be generated one at a time or built in large numbers from information in a worksheet or a database.

The mail merge feature in Word 2013 has many more uses than just mailing letters. Any task that involves a standard format that you want to populate with many pieces of information is a candidate for a merge. Think of name labels for a meeting, certificates for completing a course, a catalog of items for sale, or a voter registration list—any of these could be created with an appropriate mail merge.

# 12

## In this section:

- Printing a single envelope
- Printing multiple copies of an envelope
- Changing envelope address formatting
- Creating mailing labels and business cards
- Sending a document by email
- Starting a mail merge
- Choosing the recipients
- Adding merge fields
- Adding information with rules
- Finishing the merge



### Printing a single envelope

If you're addressing a letter, a greeting card, or other one-time item, you might want to print the envelope but not save it for future use. Word 2013 includes predefined layouts for many

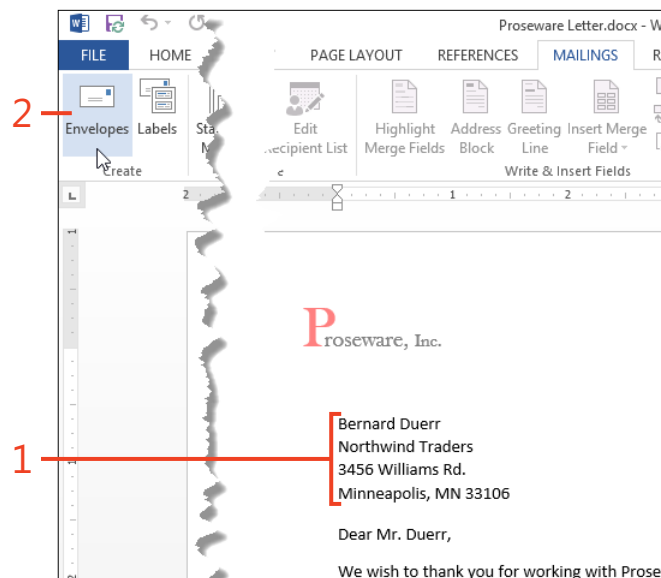
common envelope sizes, and you can define a custom size if necessary.

### Address an envelope and print

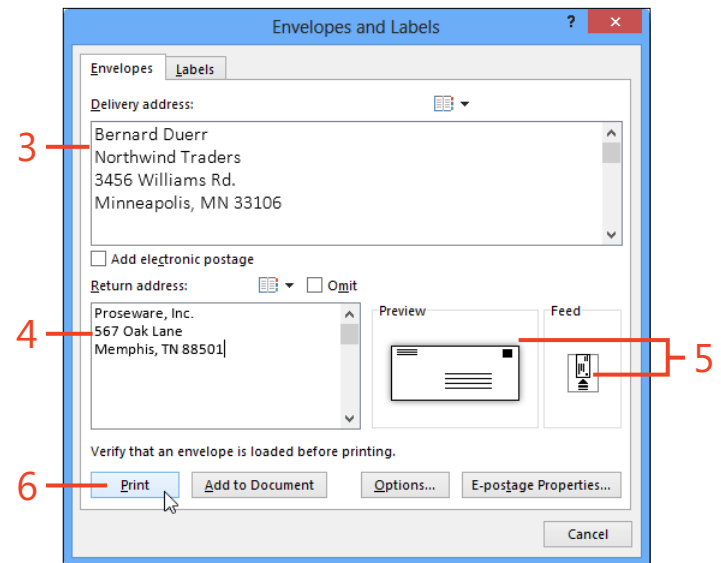
- 1 If you're addressing a letter that contains the recipient's address, open the letter document. Otherwise, open any document (such as the default blank document).

If you create an envelope while the cursor is in a letter document, and if the document starts with up to four single-line paragraphs that are left-aligned, those paragraphs will automatically appear as the delivery address in the Envelope dialog box. If you want to determine which paragraphs will appear in the Envelope dialog box, select those paragraphs in the letter document before you launch the dialog box.

- 2 On the Mailings tab, in the Create group, click Envelopes.



- 3 In the Envelopes And Labels dialog box, if the Delivery Address box is empty, or if the text is incomplete or incorrect, add or edit the text as needed.
- 4 If the Return Address box is empty, or if the text is incomplete or incorrect, add or edit the text as needed. If you don't want a return address to print on the envelope, select the Omit check box.
- 5 If the envelope size shown in the Preview thumbnail is incorrect, or if the orientation shown in the Feed thumbnail is incorrect, see "Change envelope size and print options" on page 318.
- 6 Click the Print button.



**TRY THIS** If you have an address book in Microsoft Outlook and it contains information for the envelope's recipient, you can click the Address Book icon above the Delivery Address box and select the recipient's name. The mailing address will be transferred from the address book entry to the Delivery Address box. You can also use the Address Book icon above the Return Address box to enter a return address from your address book.



**TIP** To use the electronic postage option, you must first install an electronic postage program and subscribe to a service.

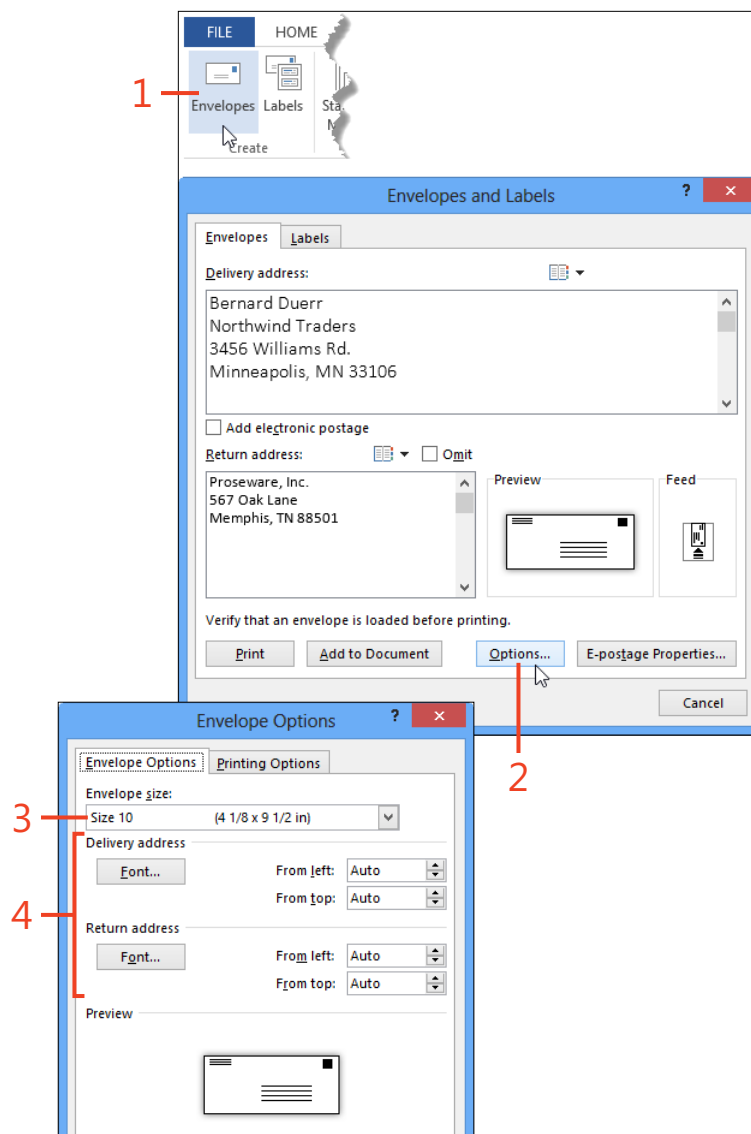
## Change envelope size and print options

- 1 On the Mailings tab, in the Create group, click Envelopes.
- 2 If you want to change the size of the envelope or the feed orientation, click the Options button.
- 3 On the Envelope Options tab in the Envelope Options dialog box, click the Envelope Size box and click the desired size in the drop-down list.

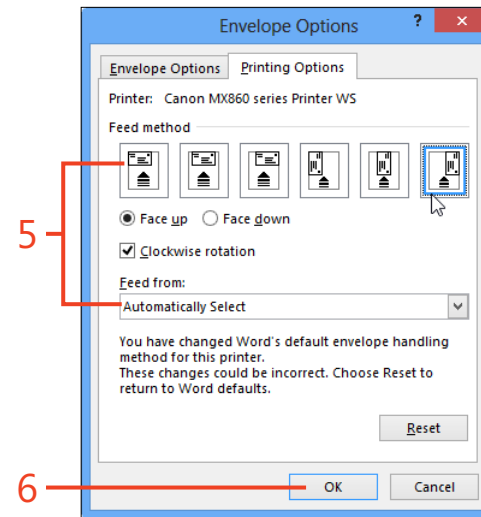
If none of the listed sizes match the envelope that you want to print, click Custom Size at the bottom of the list and enter the correct measurements.

- 4 If you want to change the font formatting of the delivery address, in the Delivery Address section in the Envelope Options dialog box, click the Font button, select the formatting in the Envelope Address dialog box, and then click OK. If you want to change the distance of the delivery address from the left and top edges of the envelope, in the From Left and From Top boxes enter the desired measurements.

If you want to change the same settings for the return address, use the Font button and the From Left and From Top boxes in the Return Address section of the Envelope Options dialog box.



- 5 If you want to change the feed orientation, on the Printing Options tab, click the icon that matches the direction of your printer's envelope feed and the position of the envelope in the feed tray. If necessary, select whether the envelopes are placed in the feed tray with the printing side up or down, and which tray contains envelopes.
- 6 Click OK.



**SEE ALSO** For more information about changing the formatting of the delivery address, see “Add direct formatting to one address” on page 323 and “Modify the Envelope Address style” on page 324.

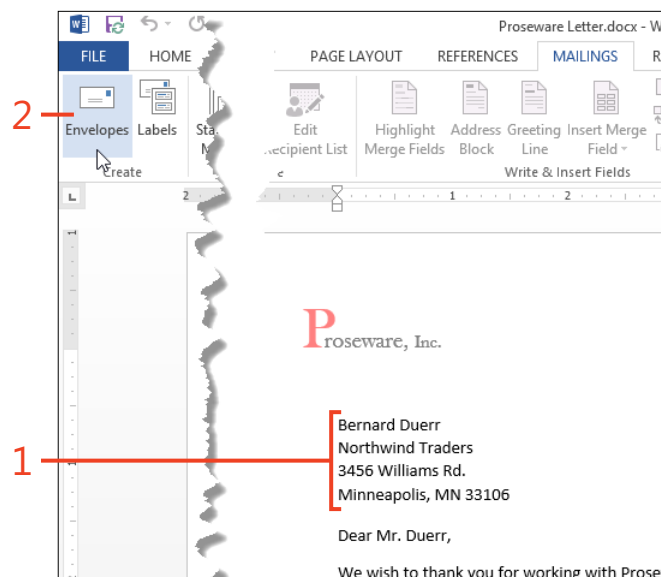
### Printing multiple copies of an envelope

You might need to print several copies of the same envelope at one time, for instance as self-addressed envelopes to include with items to be returned to you. The Print button in the Envelopes And Labels dialog box can print only one copy at a time, so you need a different approach.

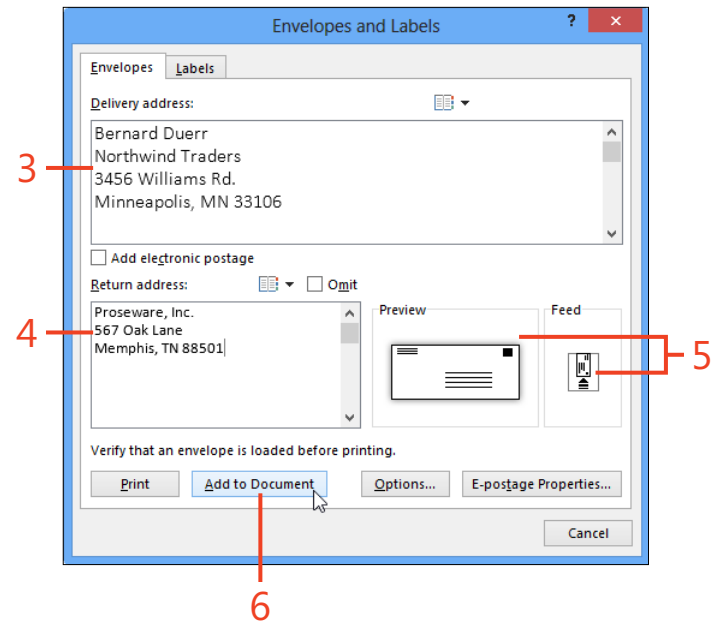
In Word 2013, you can add the envelope to the current document and save it as part of the document's file. The envelope appears as page 0 in a new Section 1 at the beginning of the document, formatted with the page size and margins appropriate for the envelope. Then, you can use the Print command in the Backstage view, which offers a setting for the number of copies to print.

### Add an envelope to a document

- 1 If you're addressing a letter that contains the recipient's address, open the letter document. Otherwise, open any document (such as the default blank document).
- 2 On the Mailings tab, in the Create group, click Envelopes.

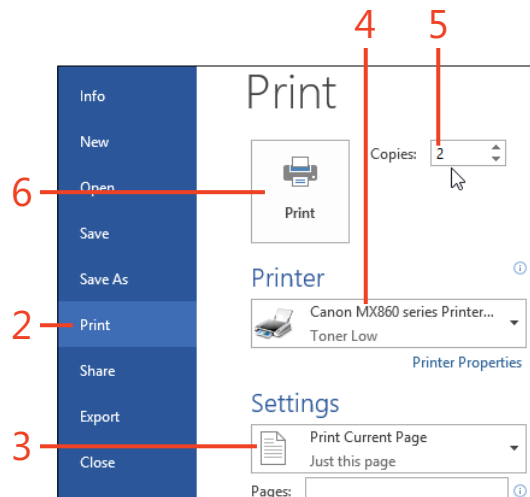
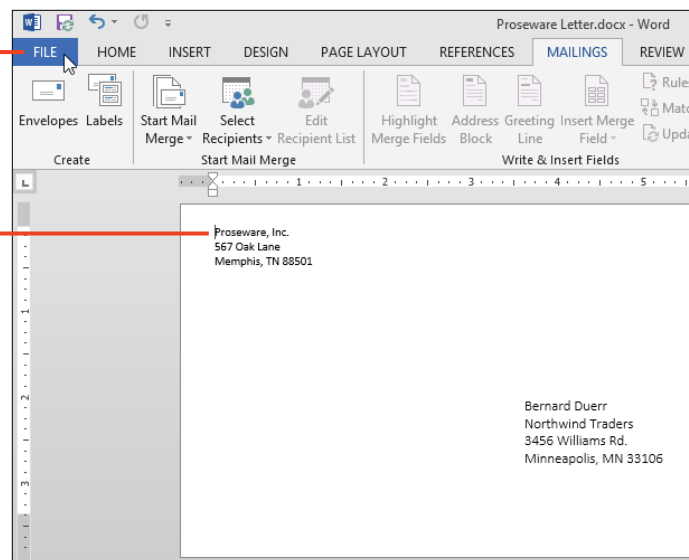


- 3 If the Delivery Address text box is empty, or if the text is incomplete or incorrect, edit the text as needed.
- 4 If the Return Address text box is empty, or if the text is incomplete or incorrect, edit the text as needed. If you don't want a return address to print on the envelope, select the Omit check box.
- 5 If the envelope size shown in the Preview thumbnail is incorrect, or if the orientation shown in the Feed thumbnail is incorrect, see "Change envelope size and print options" on page 318.
- 6 Click the Add To Document button.



### Print the envelope

- 1 Click in the envelope page in the document, and then click File to display the Backstage view.
- 2 Click the Print tab.
- 3 In the Settings section, click the first box and click Print Current Page.
- 4 If the selected printer is not the one on which you want to print the envelope, click the Printer box and select the correct printer.
- 5 Click the Copies box and enter the desired number of copies of the envelope.
- 6 Click the Print button.



**TIP** If you save the document that includes the envelope, you can print the envelope again at any time.

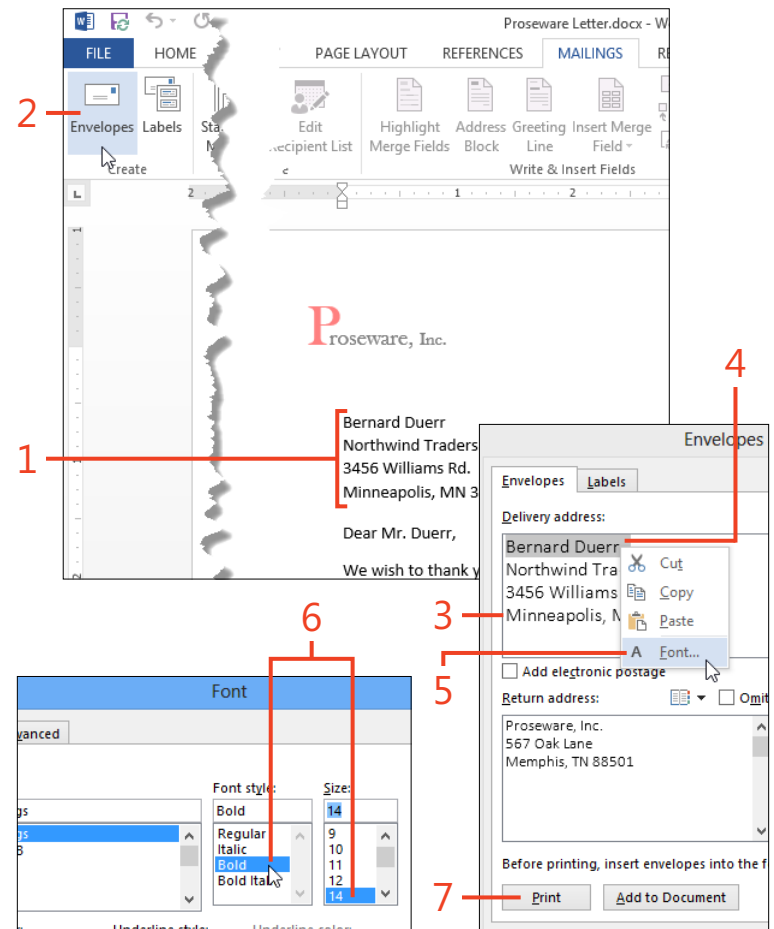
## Changing envelope address formatting

If you want to change the formatting of the address on an envelope that you'll print only once, you can apply direct character formatting to it. If you want to change the formatting for all

future envelopes, you'll save time and effort by modifying the address styles in the Normal.dotm template.

### Add direct formatting to one address

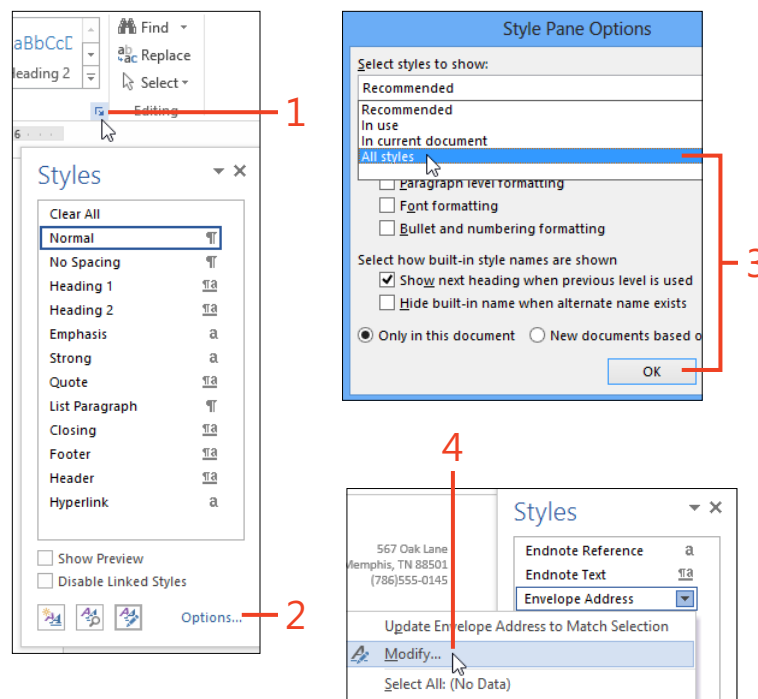
- 1 Open the document for which you want to create an envelope.
- 2 On the Mailings tab, in the Create group, click Envelopes.
- 3 If the Delivery Address text box in the Envelopes And Labels dialog box is empty, or if the text is incomplete or incorrect, add or edit the text as needed.
- 4 Select the part of the address for which you want to change the formatting.
- 5 Right-click the selected text and then, on the shortcut menu that appears, click Font.
- 6 In the Font dialog box, change the font name, font size, bold, italic, color, or other formats as desired, and then click OK.
- 7 Click the Print button.



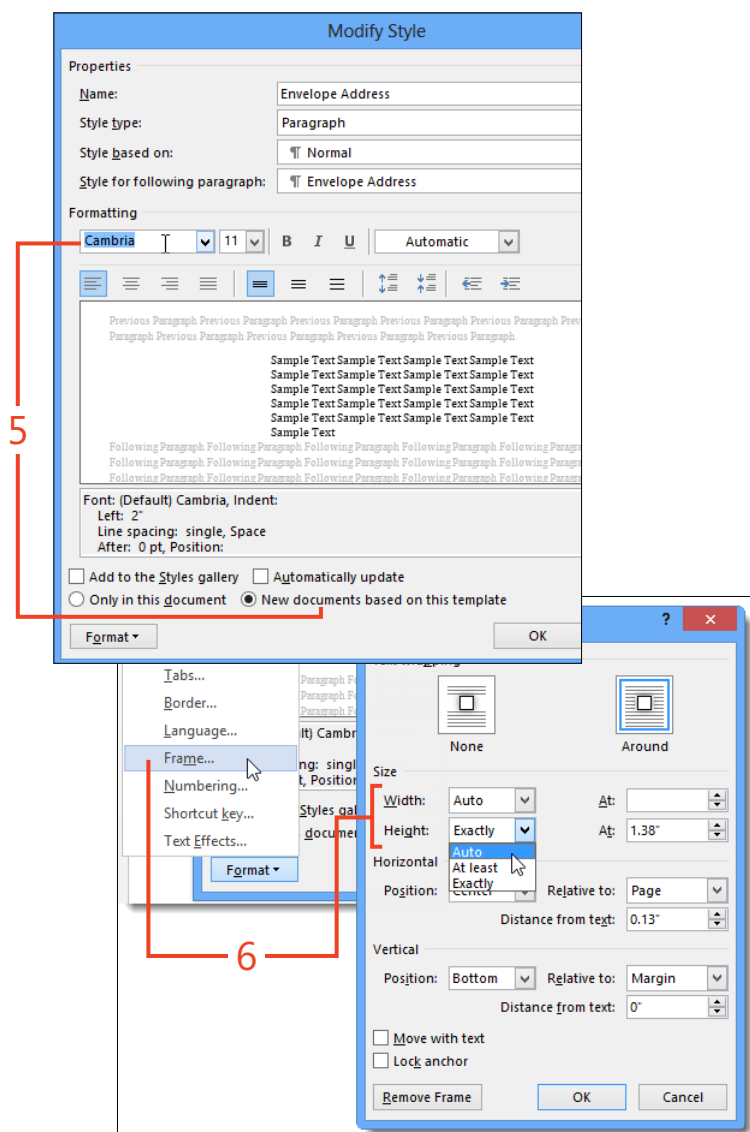


## Modify the Envelope Address style

- 1 On the Home tab, in the Styles group, click the dialog box launcher (shortcut, Ctrl+Alt+Shift+S).
- 2 In the Styles pane, if the Envelope Address style and the Envelope Return styles are listed, continue with step 4. If the two styles are not listed, click the Options link at the bottom of the pane and continue with step 3.
- 3 In the Style Pane Options dialog box, click the Select Styles To Show list box, select All Styles, and then click OK.
- 4 In the Styles pane, right-click the name of the Envelope Address style and then, on the shortcut menu that appears, click Modify.



- 5 In the Modify Style dialog box, click the New Documents Based On This Template option. Then, select the font and paragraph formatting you want for the delivery address in all new envelopes. For more information about changing the definition of a style, see “Modify an existing style by using a dialog box” on page 95.
- 6 The definition of the Envelope Address style includes a borderless frame with a fixed size that positions the text on the envelope page. If the frame is too small to hold your typical addresses, at the bottom of the Modify Style dialog box, click the Format button and then, on the shortcut menu that appears, click Frame. In the Frame dialog box, change the Width and Height list boxes from Exactly to Auto.



**TIP** You can repeat steps 4 and 5 to modify the Envelope Return style to change the formatting of the return address in all new envelopes. The Envelope Return style does not include a frame.



**SEE ALSO** For more information about modifying the Envelope Address and Envelope Return styles, see [www.gmayor.com/changing\\_envelope\\_layout.htm](http://www.gmayor.com/changing_envelope_layout.htm) and [www.gmayor.com/alternative\\_return\\_addresses.htm](http://www.gmayor.com/alternative_return_addresses.htm).

## Creating mailing labels and business cards

Printed labels are useful for such things as mailing packages, creating personalized book plates, and labeling the wires plugged into the back of your computer. Stationers sell label paper in hundreds of sizes, colors, and shapes.

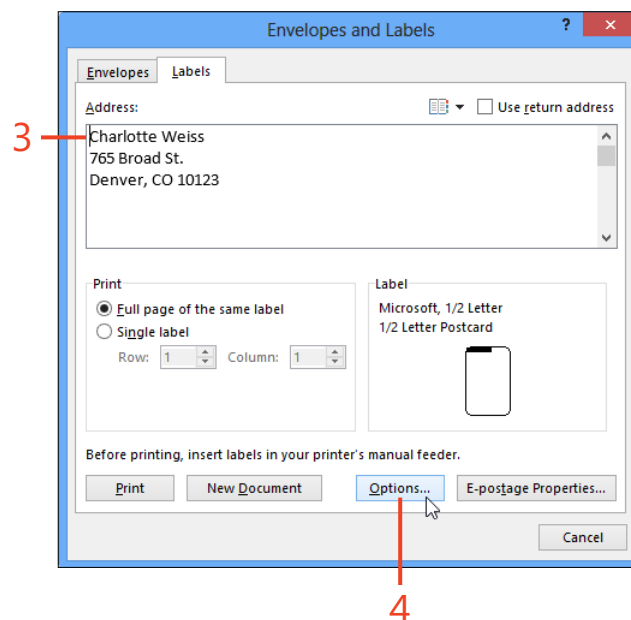
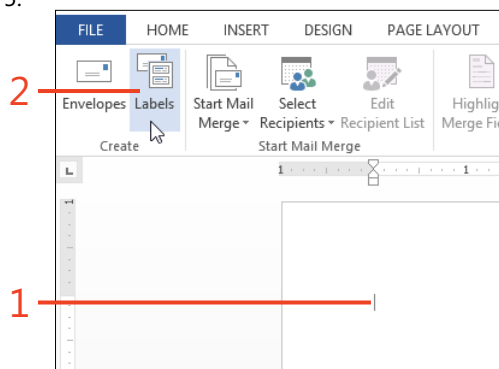
You can print business cards on perforated card paper, which is available from the same sources that sell label sheets. Word

2013 uses the same feature to create both labels and business cards—the only difference is your selection of the format to use.

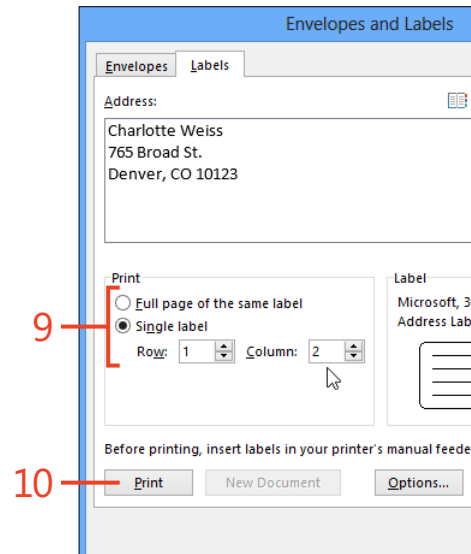
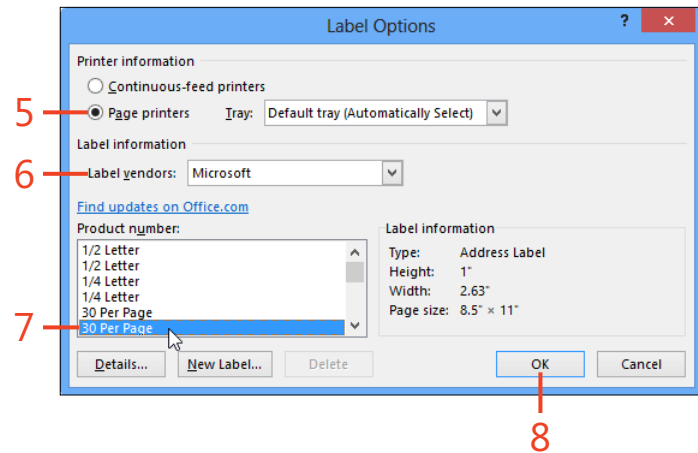
If you don't want to create your own design, you can download label templates from Office.com and other online sources. For information about downloading templates, see "Get templates from Office.com" on page 159.

### Print one label or a full page of labels

- 1 If you're creating a mailing label for a letter that contains the recipient's address, open the letter document. Otherwise, open any document (such as the default blank document).
- 2 On the Mailings tab, in the Create group, click Labels.
- 3 In the Envelopes And Labels dialog box, if the Address box is empty, or if the text is incomplete or incorrect, add or edit the text as needed.
- 4 If the product name and number shown in the Label section of the dialog box match the label paper in the printer, skip to step 9. Otherwise, at the bottom of the dialog box, click the Options button and continue at step 5.



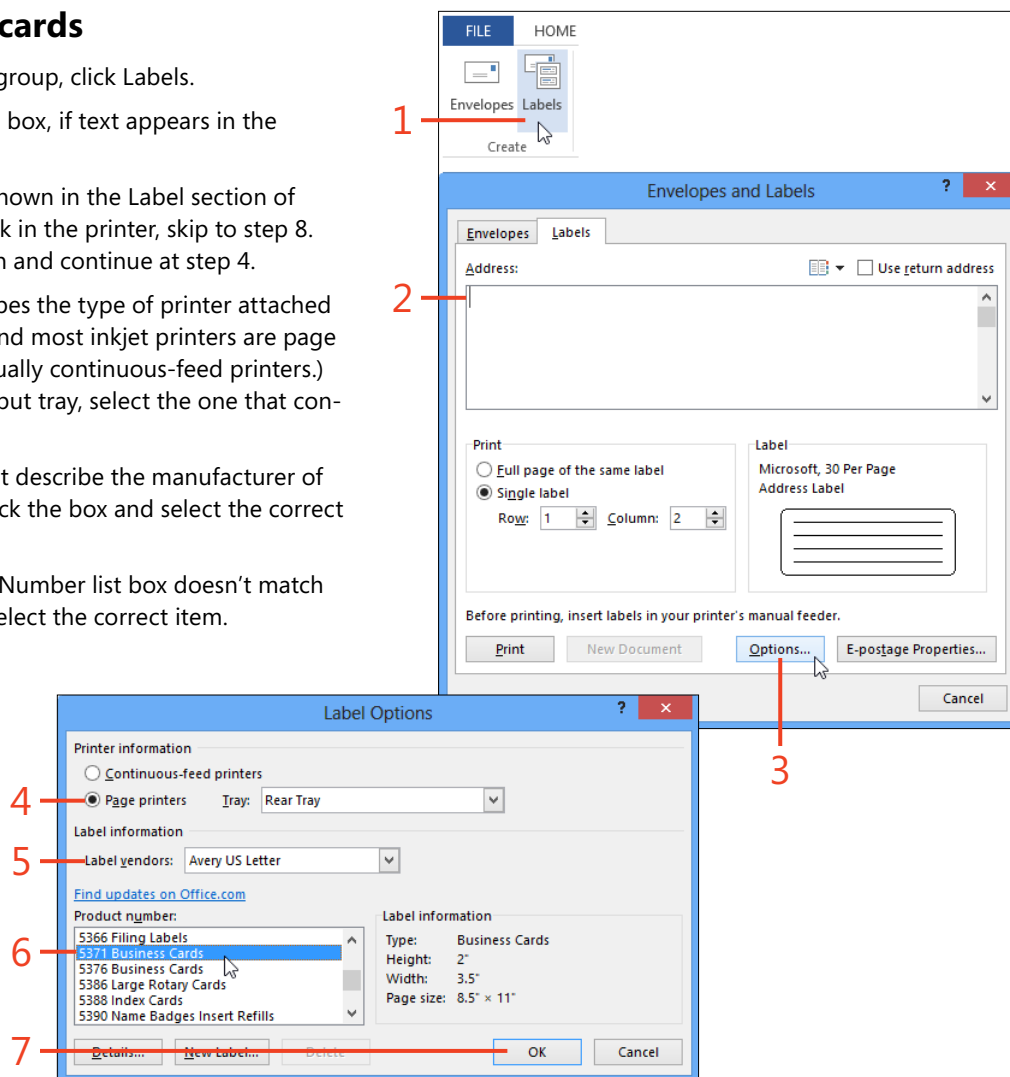
- 5 Click the option button that describes the type of printer attached to your computer. (Laser printers and most inkjet printers are page printers; dot-matrix printers are usually continuous-feed printers.) If the printer has more than one input tray, select the one that contains the label paper.
  - 6 If the Label Vendors list box doesn't display the manufacturer of the label paper that you're using, click the box and select the correct vendor.
  - 7 If the item selected in the Product Number list box doesn't match the label paper's description, select the correct item.
  - 8 Click OK.
  - 9 In the Print section of the Envelopes And Labels dialog box, click either the Full Page Of The Same Label option or the Single Label option, as needed.
- If you select Single Label, you can specify the row and column in which to print the address. This is useful if you're printing on a sheet of label paper that is already partially used.
- 10 Click the Print button.



**TIP** The entries in the Product Number list box are in alphabetical order, not numeric order. That is, all the entries that begin with the digit 1 precede the first entry that begins with the digit 2, regardless of how many digits are in each number.

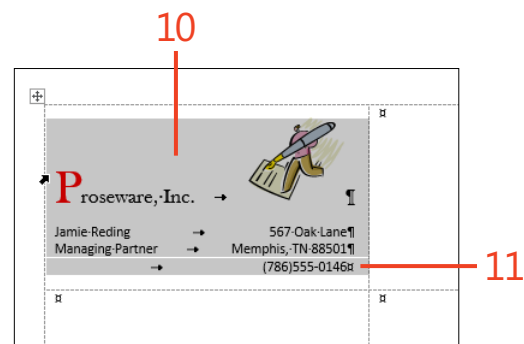
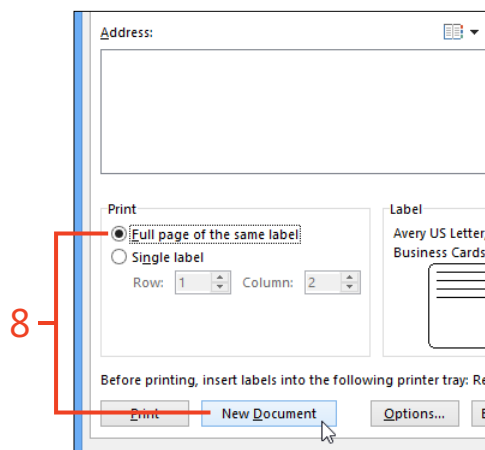
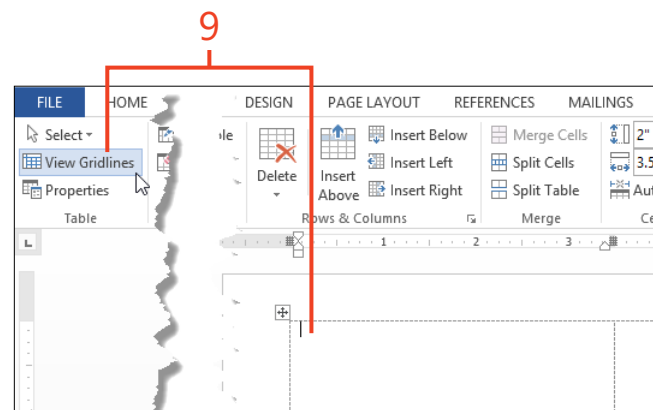
## Print a page of business cards

- 1 On the Mailings tab, in the Create group, click Labels.
- 2 In the Envelopes And Labels dialog box, if text appears in the Address box, delete it.
- 3 If the product name and number shown in the Label section of the dialog box match the card stock in the printer, skip to step 8. Otherwise, click the Options button and continue at step 4.
- 4 Click the option button that describes the type of printer attached to your computer. (Laser printers and most inkjet printers are page printers; dot-matrix printers are usually continuous-feed printers.) If the printer has more than one input tray, select the one that contains the card stock.
- 5 If the Label Vendors list box doesn't describe the manufacturer of the card stock that you're using, click the box and select the correct vendor.
- 6 If the item selected in the Product Number list box doesn't match the description of the card stock, select the correct item.
- 7 Click OK.



- 8 In the Envelopes And Labels dialog box, click the option button for Full Page Of The Same Label, and then click New Document.
- 9 The new document contains a table in which each cell's height and width match those of the cards in the selected card stock. The table's borders are set not to print. If you don't see the table cells, on the Table Tools | Layout contextual tab, in the Table group, click View Gridlines.
- 10 In the upper-left cell of the table, insert the text and graphics that you want on your business card.
- 11 Select the entire upper-left cell of the table and copy it to the clipboard (shortcut, Ctrl+C).

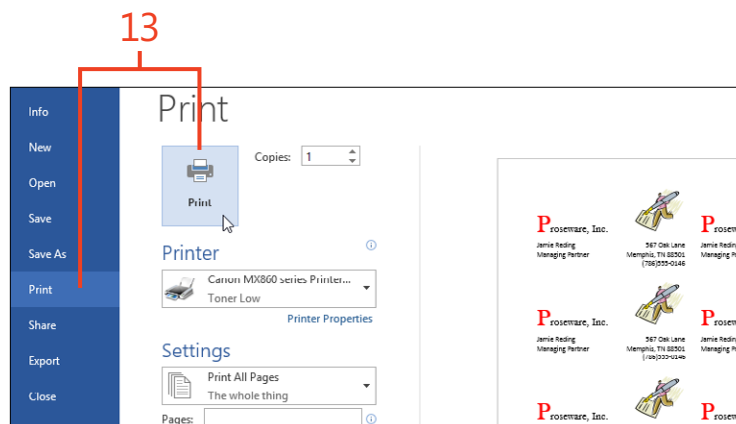
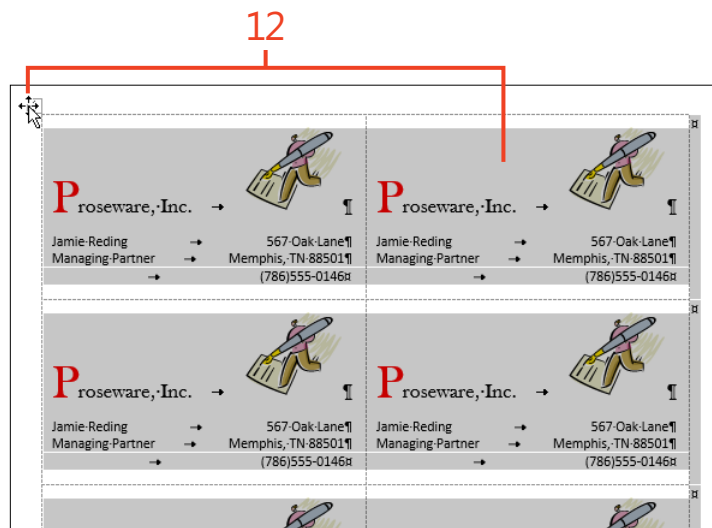
It's helpful to display nonprinting characters by clicking the Show/Hide ¶ button in the Paragraph group on the Home tab. This way, you can see and select everything in the cell, including the cell marker (¶).



## 12: MAILING PAPER OR PIXELS

**12** Click the table handle in the left margin to select the entire table. Then, paste the contents of the clipboard (shortcut, Ctrl+V).

**13** Click the File tab to display the Backstage view. Click the Print tab and then click the Print button.



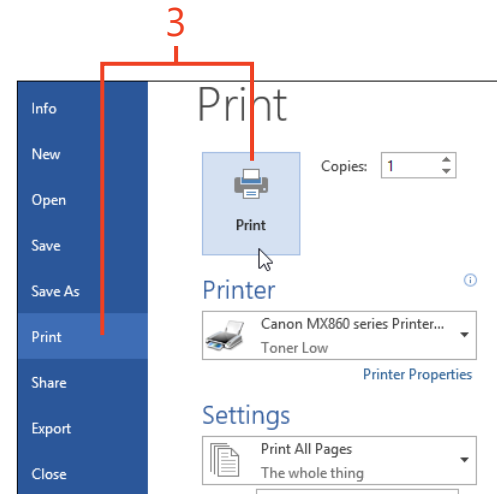
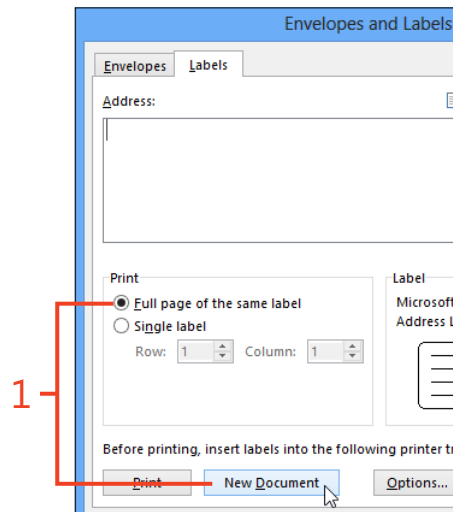
**TIP** Microsoft Publisher is another good choice for creating great-looking business cards.

## Print a page of different labels

- 1 In the procedure “Print one label or a full page of labels” on page 326, perform steps 1 through 8. In the Envelopes And Labels dialog box, click the option button for Full Page Of The Same Label and then click New Document. Continue with step 2 below.
- 2 In the table cell that corresponds to each label, type or paste the information for that label.
- 3 Click the File tab to display the Backstage view, click the Print tab, and then click the Print button.

2

Antonio Alwan Contoso, Ltd. 567 Elm St. Downingtown, PA 98052	Bernard Duerr Northwind Traders 3456 Williams Rd. Minneapolis, MN 33106	Daniela Gualita Coho Vineyard & Winery 789 Vine St. Oakville, CA 10312
Anna Lidman Margie's Travel 234 Main St. Boston, MA 85003	Charlotte Weiss Tailspin Toys 765 Broad St. Denver, CO 10123	



**SEE ALSO** If you already have the information for the labels stored in a Word table, a Microsoft Excel worksheet, a Microsoft Access database, or an Outlook contact list, a mail merge is an alternative way to print mailing labels. For information about using a mail merge, see “Starting a mail merge” on page 334.



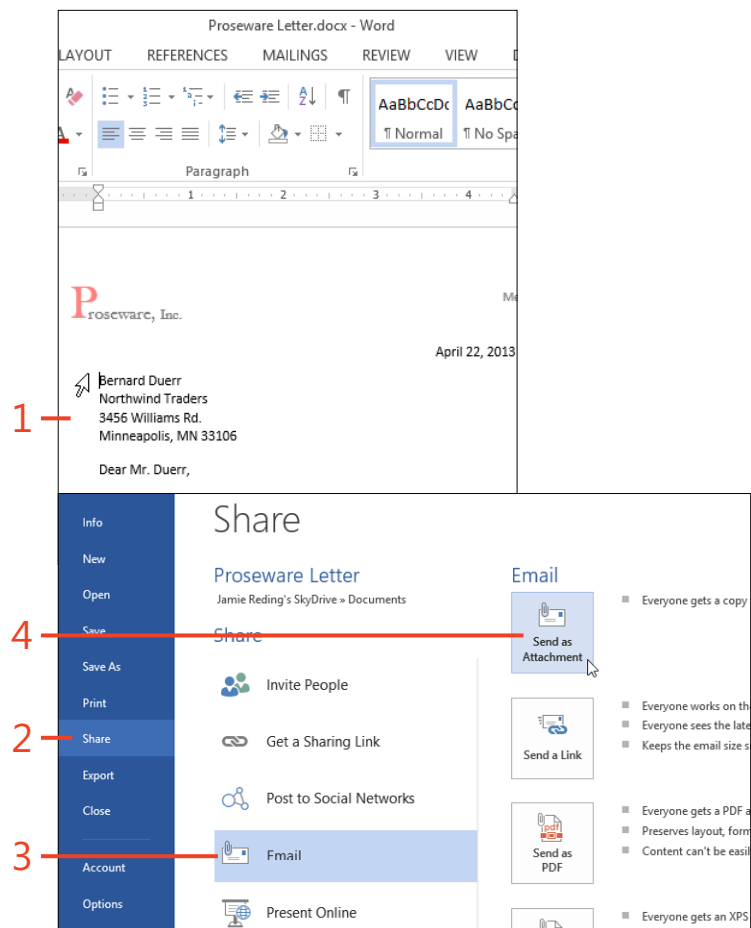
### Sending a document by email

You can share your documents with other Word users in several ways, and one of those ways is to send a copy of a document file by email. If you have an email program on your computer,

you can send an open Word 2013 document as an attachment to a message directly from the Backstage view. You can send the document as an editable Word file, a PDF file, or an XPS file.

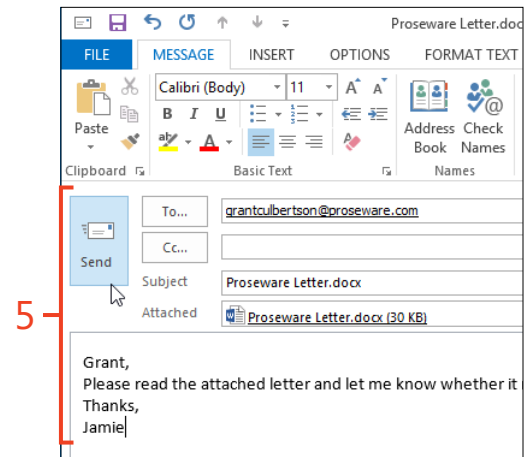
### Send a document as an attachment

- 1 Open a document that you want to send to another person.
- 2 Click File to display the Backstage view and then click the Share tab.
- 3 Click Email.
- 4 To send the document as an editable Word file, click Send As Attachment. If you prefer to send a PDF file or an XPS file, instead, click Send As PDF or Send As XPS.



**TIP** The entries in the middle pane for Get A Sharing Link and Post To Social Networks appear only if the document file is stored on SkyDrive or a SharePoint server. In the pane on the right, the Send A Link button is available only if the document file is stored on SkyDrive or a SharePoint server.

- 5 In the email program's window, type the recipient's address, the subject, and the body of the message, and then click the Send button.



**CAUTION** To be able to send a document as an email attachment, a default email program must be configured on your computer. If your edition of Office doesn't include Outlook, you can use a third-party program. If your computer runs Windows 8, you might be able to use the Microsoft Mail app. If the only available mail service is a web mail interface, save the document to a local disk drive and then use the web mail program's command to attach the file to a message.



**SEE ALSO** For more information about sharing documents in Word 2013, see "Sharing with SkyDrive" on page 370.

## Starting a mail merge

In Word 2013, a mail merge starts with a *main document*, which contains the formatting that you want in the final output. It might also contain text that you want to appear in each output document. You insert *merge fields* in the main document to reserve places for the *variable data*. You select a document or a database as the *data source* for the merge, and you can select which of the *recipients* listed in the data source will be used to create output. If you want, you can preview the output. Finally, you can send the output to a file, to the printer, or to an email program.

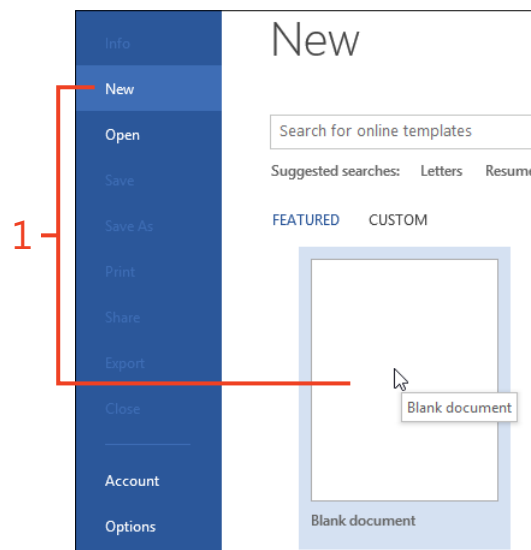
The mail merge feature in Word 2013 is quite flexible; you can use any of several kinds of data sources, you can sort and select

the names or other items that you want to include, and you can create the output in several formats. However, this flexibility comes at the cost of some complexity. Completing a mail merge requires a sequence of steps, as described on the following pages.

The commands on the Mailings tab use the term *recipients* to refer to the names of people in a mailing list. You can also use Word's mail merge feature to work with other kinds of lists, such as product catalogs, in which case the term recipients refers to the items in the list.

### Create the main document

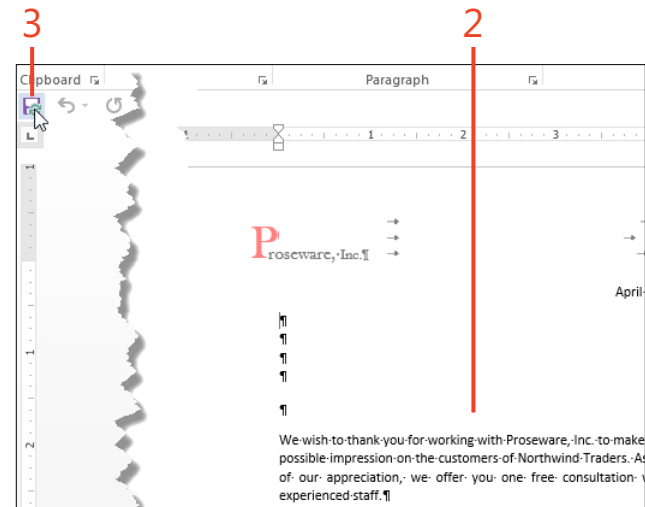
- 1 Click File to display the Backstage view. Click the New tab and then click Blank Document or a custom template.



- 2 If you want to create a letter or an email message to send to multiple addresses, use the new document to write the body of the letter or message (that is, everything that will be the same in all of the letters).

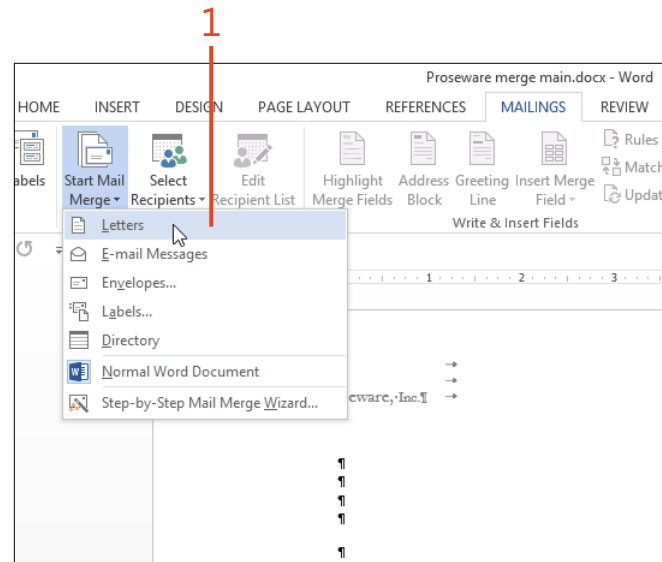
If you're creating labels, envelopes, or a directory merge (called a *catalog* merge in some earlier versions of Word), leave the document blank.

- 3 When the main document is complete, on the Quick Access Toolbar, click the Save button. Then, while the document remains open, continue at "Select the merge type," which follows this task.



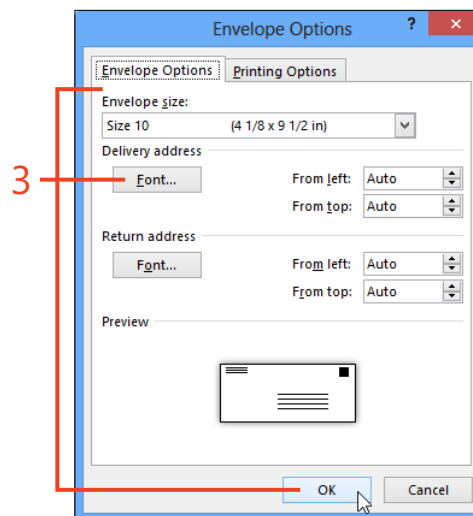
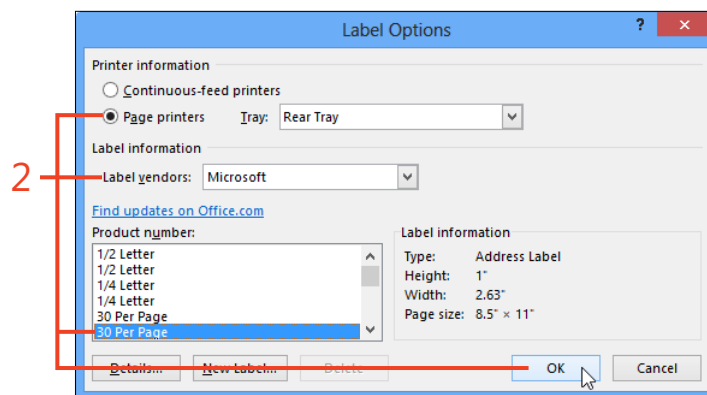
## Select the merge type

- 1 On the Mailings tab, in the Start Mail Merge group, click Start Mail Merge. On the drop-down list that appears, click one of the following commands:
- **Letters** Creates an output document containing a separate section for each recipient, with each section starting on a new page
  - **E-Mail Messages** Creates an email message to each recipient
  - **Envelopes** Creates an output document containing an envelope for each recipient
  - **Labels** Creates an output document containing labels, with one label for each recipient
  - **Directory** Creates an output document in which each recipient's data starts a new paragraph



## 12: MAILING PAPER OR PIXELS

- 2 If you clicked Labels in step 1, the Label Options dialog box opens automatically. Select the printer tray, label vendor, and product number, and then click OK. While the document remains open, continue at “Choosing the recipients” on page 337.
- 3 If you clicked Envelopes in step 1, the Envelope Options dialog box opens automatically. Select the envelope size, choose the printing options, and then click OK. While the document remains open, continue at “Choosing the recipients.”



**TIP** If you prefer the software to guide you through the same procedures described in this book, click the Step-By-Step Mail Merge Wizard command at the bottom of the Start Mail Merge gallery. The wizard leads you through each step.

## Choosing the recipients

When you create a mail merge in Word 2013, you must choose the information that Word puts into the output document. The information could be stored in one of a number of places—as a table in a Word document, in an Excel worksheet, in an Access or Microsoft SQL Server database, or in an Outlook contact list.

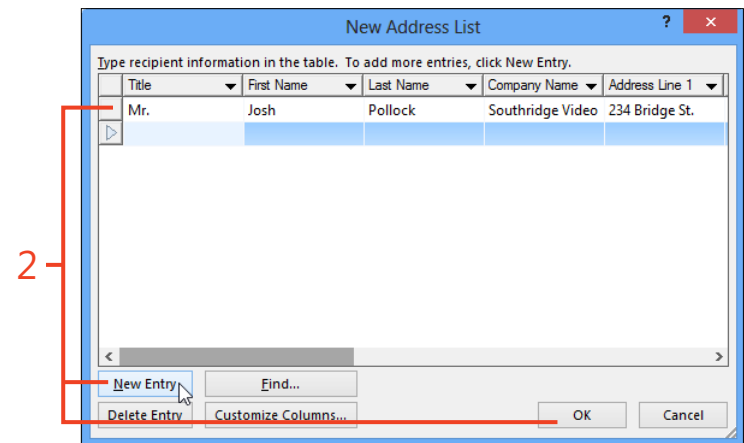
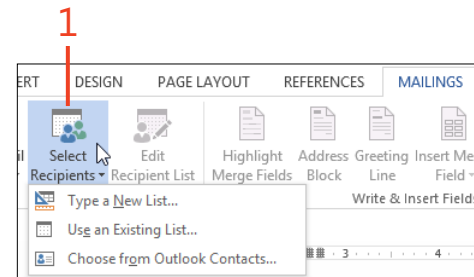
### Select a data source

- On the Mailings tab, in the Start Mail Merge group, click Select Recipients. On the menu that appears, click one of the following commands:
  - Type A New List** Opens the New Address List dialog box, in which you can type entries for a list and then save them as a database (.mdb) file
  - Use An Existing List** Opens the Select Data Source dialog box, in which you can select an existing file (a Word or plain text document, an Excel worksheet, or an Access or SQL Server database) containing the entries
  - Choose From Outlook Contacts** Opens the Select Contacts dialog box, in which you can select which contact folder to use, if your Office edition includes Outlook
- If you clicked Type A New List in step 1, in the New Address List dialog box, type the names, addresses, and other information. To add each entry after the first one, click New Entry. When the list is complete, click OK and continue at step 3.



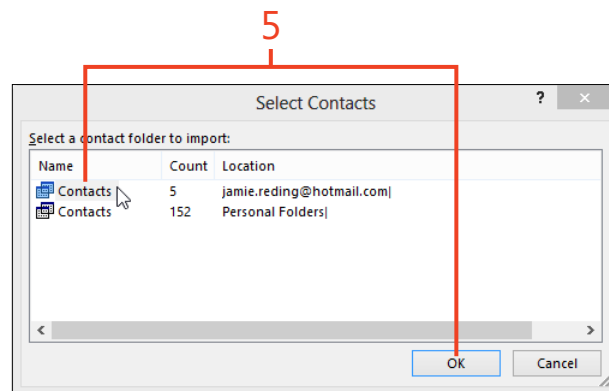
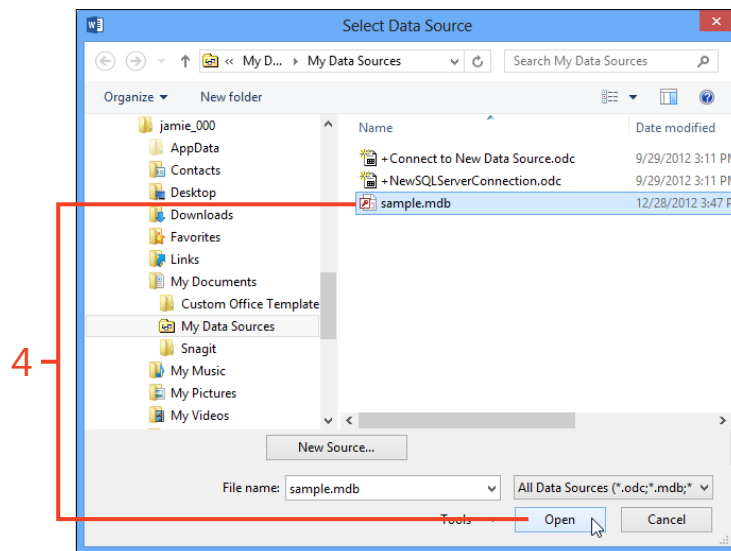
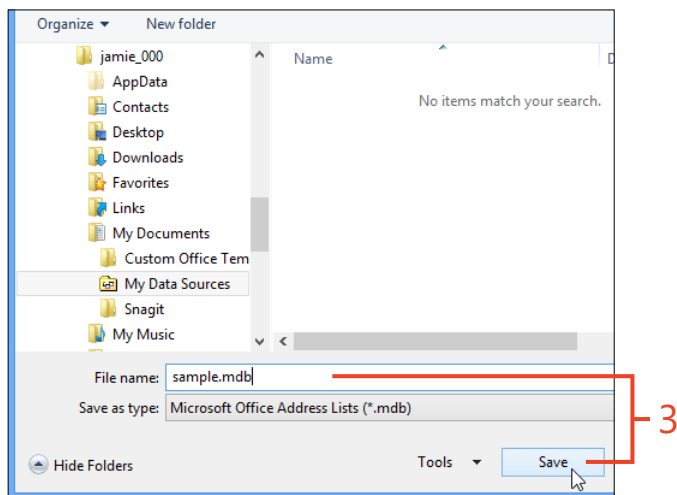
**TIP** Click the Customize Columns button to add, remove, rename, or reorder columns in the New Address List dialog box. To sort the entries on any column, click the header of that column.

After you select the file or other source of the data, Word provides tools with which you can refine the list of recipients or other records, to sort them on one or more fields, and to edit the list entries if necessary.



## 12: MAILING PAPER OR PIXELS

- 3 In the Save Address List dialog box that automatically opens, enter a file name and click Save. Then, continue at “Edit the list of recipients” on page 339.
- 4 If you clicked Use An Existing List in step 1, the Select Data Source dialog box initially displays the contents of the My Data Sources folder in your user profile. If the data source that you want to use is a Word or plain text document, an Excel worksheet, or an Access (.mdb or .accdb) database, navigate to the correct folder and select the file containing the data. Then, click Open and continue at “Edit the list of recipients.”
- 5 If you clicked Choose From Outlook Contacts in step 1, click the contact folder that contains the data that you want to use and click OK. Then, continue at “Edit the list of recipients.”



**TIP** The two default items in the My Data Sources folder launch the Data Connection Wizard, which can help you attach the mail merge document to an Access or SQL Server database.

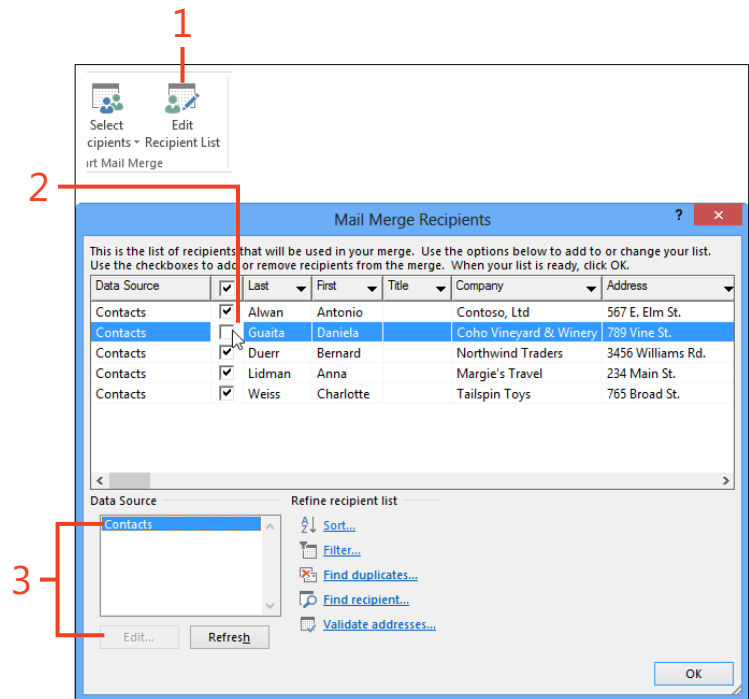
## Edit the list of recipients

- 1 If you chose an Outlook contacts folder as your data source, the Mail Merge Recipients dialog box opens automatically. Otherwise, on the Mailings tab, in the Start Mail Merge group, click Edit Recipient List to open the Mail Merge Recipients dialog box.
- 2 Clear the check boxes next to entries that you do not want to include in the mail merge; select the check boxes for those that you do want to include.

Selecting or clearing the check box in the header row of the list causes all of the entries to become selected or cleared, respectively. If you want to keep only a few entries selected, first clear the entire list and then select those that you want.

- 3 If you want to add or delete entries in the list of recipients, click the name of the source file in the Data Source box and click Edit. The Edit Data Source dialog box that appears is the same as the New Address List dialog box shown in step 2 of “Select a data source” on page 337.

If the data source is an Outlook contact list, the Edit button does not become available. To edit entries in a contact list, you must use Outlook’s contact editor.





## 12: MAILING PAPER OR PIXELS

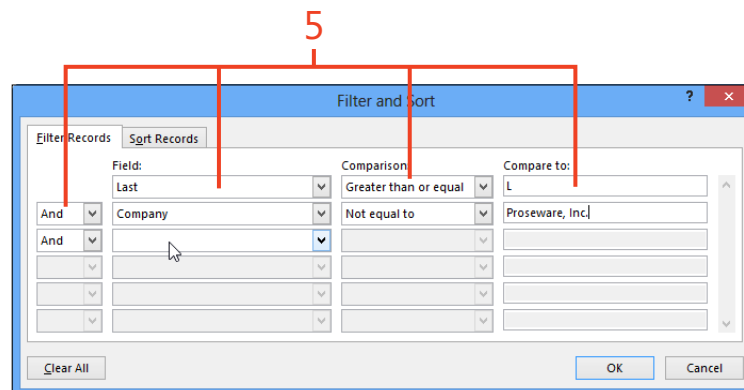
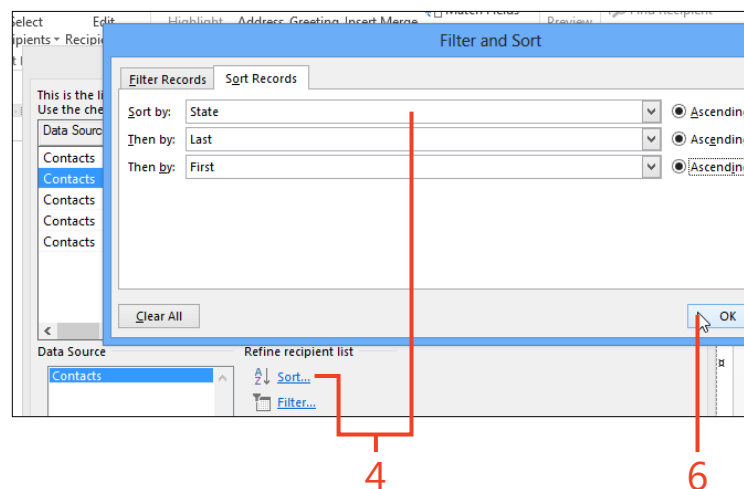
- 4 The order in which the merge's results appear is determined by the order of the entries in the list of recipients. If you want to sort the list of recipients on a single column, click that column's header. To sort on two or three columns, click the Sort link in the Refine Recipient List section to open the Filter And Sort dialog box. On the Sort tab, in each drop-down list, select the name of the column on which to sort, and whether to sort it in ascending or descending order.

For example, you can sort the recipients by state, then by last name, and finally by first name. In the merge's results, someone named Smith who lives in Arizona would be listed before someone named Jones who lives in Wyoming.

- 5 If you want to include in the merge only the entries that satisfy certain criteria, click the Filter link in the Refine Recipient List section to open the Filter And Sort dialog box. On the Filter tab, select the name of a column in the Field drop-down list, select a condition in the Comparison drop-down list, and if necessary enter a value in the Compare To list box. You can continue adding criteria, connected by *And* or *Or*, as needed to specify the set of recipients to include.

For example, to limit the list of recipients to those whose last names start with the letter M, select the criteria **Last | Greater than or equal to | M | And | Last | Less than | N**.

- 6 When the list of recipients is complete and correctly sorted, click OK.



## Adding merge fields

For a mail merge to place values from the data source into the output, you must insert one or more merge fields into the main document. During the merge, each merge field is replaced by the corresponding value in the data source for the current recipient. For example, suppose a recipient's record in the data source contains the values First\_Name = John and Last\_Name = Clarkson. In the main document for a letter merge, a line might contain the merge fields «First\_Name» «Last\_Name». When

the record is processed during the merge, those fields will be replaced with the text John Clarkson.

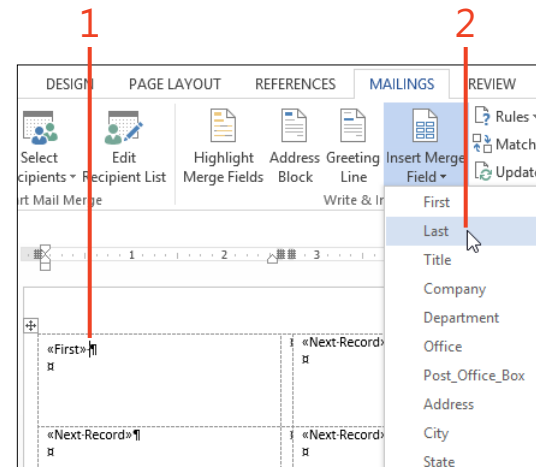
You can insert copies of the same merge field into the main document in multiple places. For example, the merge field «First\_Name» could be used in the address, in the greeting line, and in the body of the letter.

## Insert merge fields in the document

- 1 Click in the main document at the location where you want information from the data source to be inserted during the merge.
- 2 On the Mailings tab, in the Write & Insert Fields group, click the drop-down arrow on the Insert Merge Field button and then, in the list that appears, click the name of a column from the data source. Repeat steps 1 and 2 until the main document contains all the necessary merge fields.

If you selected a label merge, insert merge fields and other text only in the upper-left cell of the table in the main document. During this step, the other cells contain only a «Next Record» merge field. The other cells will be filled in step 4 of this procedure.

If you place another merge field on the same line as the first merge field, type a space, text, or punctuation between them as necessary. Otherwise, there won't be any separation between the values in the output. If you want the next merge field to appear on the next line, press Enter at the end of the first line.

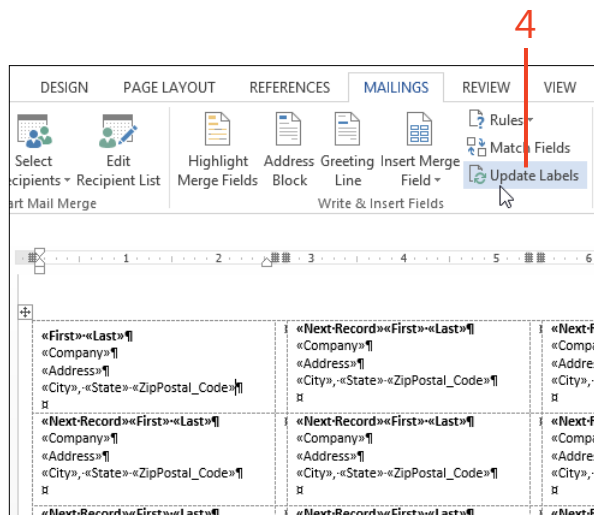
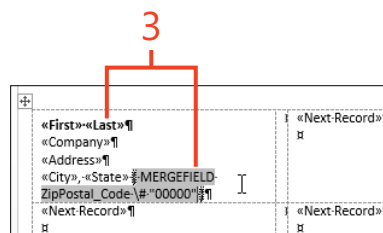


## 12: MAILING PAPER OR PIXELS

- 3 If you want, apply character formatting to some of the merge fields in the main document, either directly or by using a character style.

You can right-click a merge field in the main document and click Toggle Field Codes to display the complete field code. Then, you can insert formatting switches to control the appearance of the results in the output. For information about inserting formatting switches, see “Controlling field formatting by using switches” on page 205.

- 4 If you selected a label merge, on the Mailings tab, in the Write & Insert Fields group, click Update Labels. This copies the merge fields and text that you entered in the upper-left cell of the table into all the other cells.



**TRY THIS** On the Mailings tab, in the Write & Insert Fields group, click either Address Block or Greeting Line to insert special merge fields. These merge fields combine data from several columns of the recipient's record. When you insert one of these fields, Word displays a dialog box in which you can select options for the formatting of the output. If you use either of these merge fields, be sure to preview the results for every recipient and correct any unexpected output.



**CAUTION** If the style applied to the merge fields includes paragraph formatting with extra space before or after the paragraphs, the lines might be spaced too widely. This particularly affects label and envelope merges, in which addresses with more than three or four lines might not fit. If necessary, apply another style such as No Spacing to the main document.

## Adding information with rules

The entries in the Insert Merge Field gallery represent only the columns that are present in the data source. In addition, you can use the fields in Word 2013 to perform comparisons and

calculations during a mail merge, so you can display additional information, depending on the data in the data source.

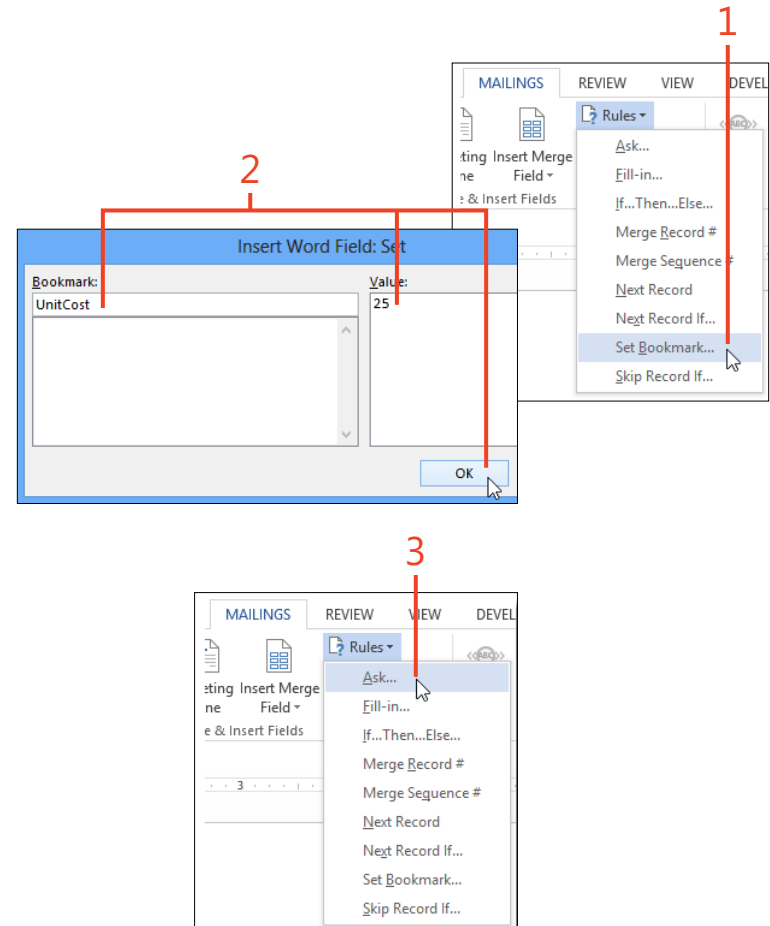
## Modify the merge with rules

- 1 Insert a SET field if you want to store an unchanging number or text that can be used to perform comparisons or calculations for all of the recipients in a merge. On the Mailings tab, in the Write & Insert Fields group, click Rules and then, on the list that appears, click Set Bookmark. Continue at step 2.

- 2 In the Insert Word Field: Set dialog box, type a bookmark name in the Bookmark list box, type the number or text in the Value text box, and then click OK.

The bookmark is located inside the SET field, which doesn't display any result in the document. However, the bookmark can be referenced in other fields elsewhere in the document, such as a REF field that will display the value, or a formula field that will use the value in a calculation.

- 3 Insert an ASK field if you want to store a number or text that might be different for each recipient. On the Mailings tab, in the Write & Insert Fields group, click Rules and then, on the list that appears, click Ask. Continue at step 4.

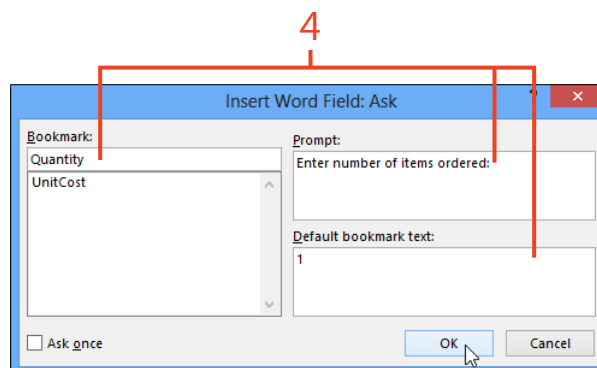


## 12: MAILING PAPER OR PIXELS

- 4 In the Insert Word Field: Ask dialog box, type a bookmark name in the Bookmark box, type a question in the Prompt box, type a default value if desired, and then click OK.

During the merge, the prompt will be displayed for each recipient, and the value you enter will overwrite any previous value in the bookmark. If you want to use the same value for all of the recipients during the current merge, select the Ask Once check box.

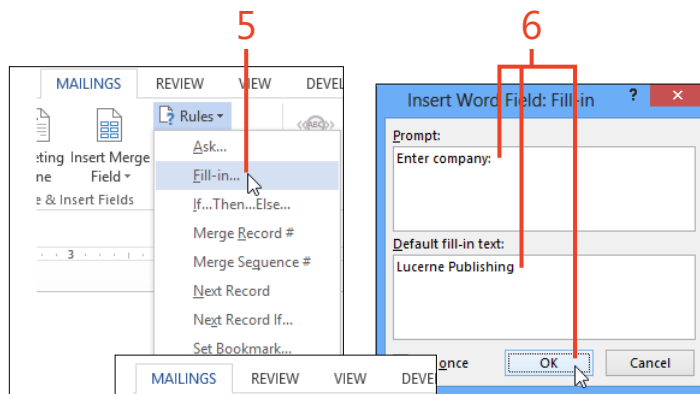
The bookmark is located inside the ASK field, which doesn't display any result in the document. However, the bookmark can be referenced in other fields elsewhere in the document, such as a REF field that will display the value, or a formula field that will use the value in a calculation.



- 5 If you want to display a number or text that might be different for each recipient, insert a FILLIN field. On the Mailings tab, in the Write & Insert Fields group, click Rules and then, on the list that appears, click Fill-in. Continue at step 6.

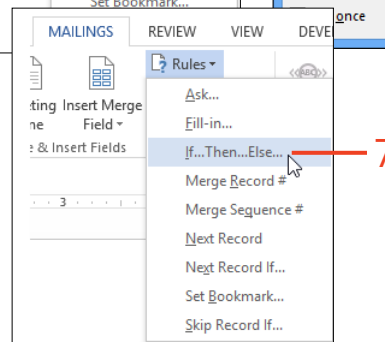
- 6 In the Insert Word Field: Fill-in dialog box, type a question in the Prompt text box, type a default value if desired, and then click OK.

The FILLIN field is similar to the ASK field, except that the FILLIN field displays its value in the document and doesn't store its value in a bookmark.



- 7 Insert an IF...THEN...ELSE field where you need to display different results in the document, depending on the value of a merge field or other field. If you want to base the decision on a bookmark value (such as one in a SET field or an ASK field), continue at step 9.

On the Mailings tab, in the Write & Insert Fields group, click Rules and then, on the list that appears, click If...Then...Else. Continue at step 8.

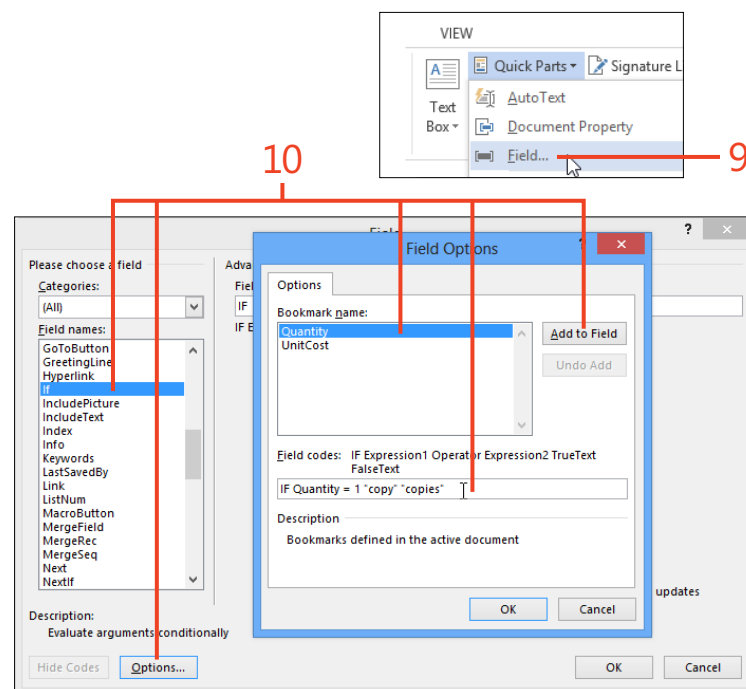
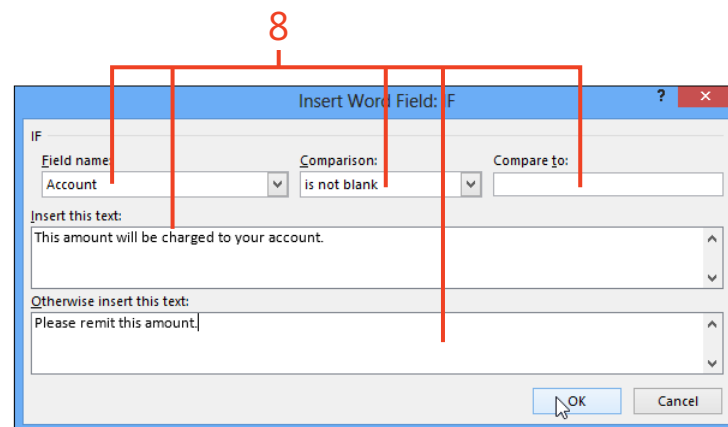


- 8 In the Insert Word Field: If dialog box, select a merge field in the Field Name list box, select a condition in the Comparison box and, if necessary, enter a value in the Compare To list box. In the Insert This Text box, enter the result that the field will display if the comparison is true. In the Otherwise Insert This Text box, enter the result that the field will display if the comparison is false. Click OK.
- 9 If you want to base the decision on a bookmark value (such as one in a SET field or an ASK field), click the Insert tab. In the Text group, click Quick Parts and then click Field. Continue at step 10.
- 10 In the Field dialog box, in the Field Name list box, click If. Then, click the Options button.

In the Field Options dialog, click the desired bookmark name and then click Add To Field. Click at the end of the expression in the Field Codes box and type the rest of the code.

For example, suppose the selected bookmark is *Quantity*, and you want the result to display *copy* if *Quantity* is 1 or *copies* if *Quantity* is greater than 1. The completed code for this field is **IF Quantity = 1 "copy" "copies"**.

Click OK in the Field Options dialog box and then click OK in the Field dialog box.



## Finishing the merge

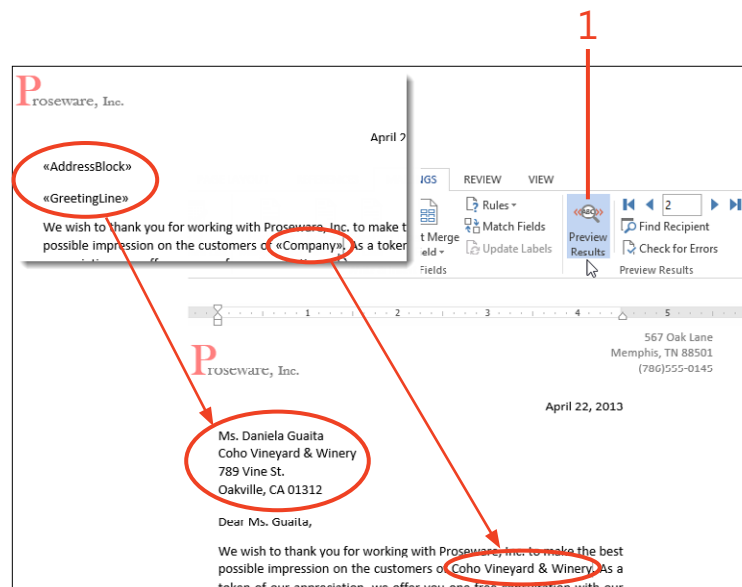
When the main document contains all of the merge fields, other fields, text, and graphics needed to prepare the output, it's time to perform the final steps. Because of the length and complexity of the setup, you should first examine a preview to ensure that

everything is in place. When you're confident of the correctness of the document and the sorting and filtering of the data source, you can run the final merge.

## Merge to special outputs

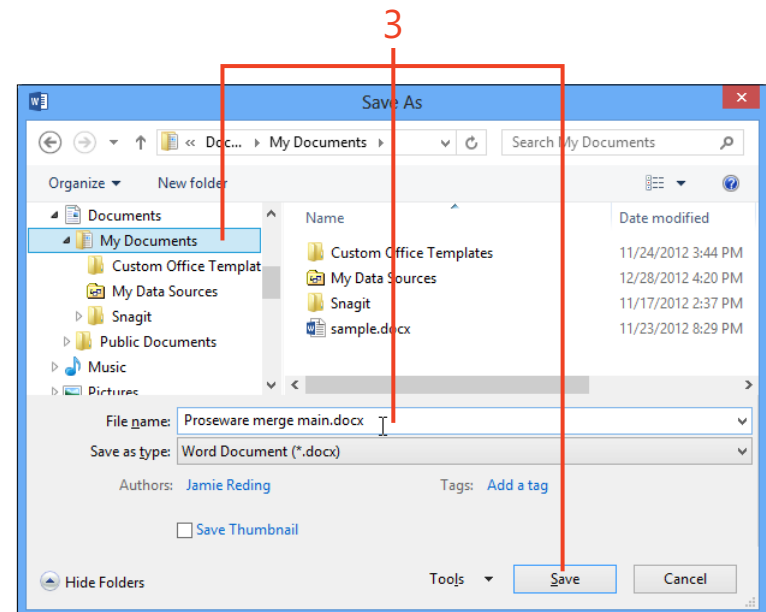
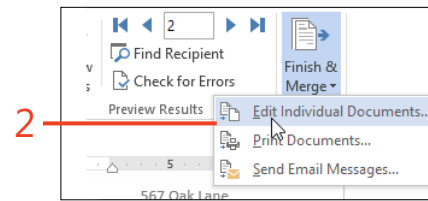
- 1 On the Mailings tab, in the Preview Results group, click Preview Results. If you selected a label merge, the preview shows the pages of labels. For any other kind of merge, the preview shows the output for only one recipient at a time. You can use the arrow buttons in the Preview Results group to display previews of the rest of the output.

If unwanted information appears in any of the previews or information is missing, click Preview Results to turn it off. Then, edit the main document or the records in the data source to correct the problem and repeat the preview.



**TIP** If you preview a label merge and only the first recipient's label appears, you have skipped the step of clicking the Update Labels button (step 4 in "Insert merge fields in the document" on page 342).

- 2 On the Mailings tab, in the Finish group, click Finish & Merge and then, in the list that appears, click one of the following:
  - **Edit Individual Documents** Merges the data from the data source into the merge fields to create a new document. You can edit this document, save it for later use, or print it like any other document.
  - **Print Documents** Merges the data from the data source into the merge fields and sends the result to the printer. The Print dialog box appears so that you can set the printer properties, the number of copies, and other options. Click OK to print.
  - **Send Email Messages** Merges the data from the data source into the merge fields and sends the result to the default email program. The Merge To Email dialog box appears so that you can enter the subject line and select the merge field that contains the email address. Click OK to send.
- 3 When the merge runs successfully, save the main document so that it can be used again.



**SEE ALSO** For more information about mail merges, see [www.gmayor.com/merge\\_labels\\_with\\_word\\_2007.htm](http://www.gmayor.com/merge_labels_with_word_2007.htm). The descriptions presented there also apply to Word 2013.





# Reviewing documents

When you prepare a document with input from many coworkers, you might use any of several methods. In one style, each person works alone on one or a few sections. Then somebody puts all the pieces together, smooths out differences in formatting and writing style, and publishes the result. Another method involves writing a draft, passing it around for review and comments, and editing the document to resolve any questions.

The Comments and Track Changes features provided by Microsoft Word 2013 are ideal for multiple rounds of reviews, and the new Simple Markup view makes even heavily revised documents more readable.

In another scenario, perhaps your workflow results in several copies of the same document from different reviewers, with or without change tracking. The Compare and Combine features can pull together those multiple versions into a single document so that you can see all the changes at once.

# 13

## In this section:

- Adding comments
- Showing and hiding comments
- Tracking changes
- Showing and hiding tracked changes
- Setting options for tracked changes
- Accepting and rejecting changes
- Comparing reviewed versions
- Merging reviewed versions

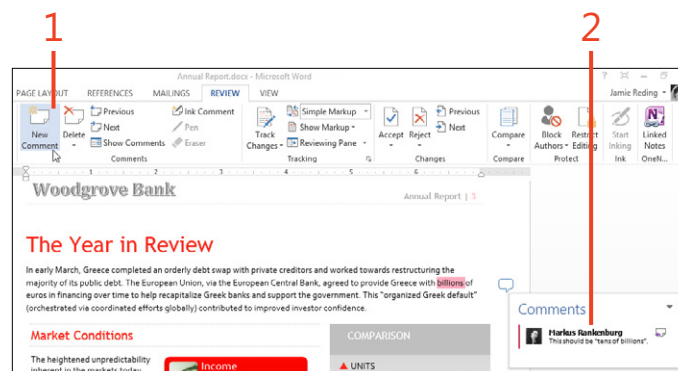
### Adding comments

If you send your document out for review, you or the other Word users can insert comments that don't become part of the text. In Word 2013, you can also reply to a comment as you might in an email conversation. When you've settled the issue

raised by a comment, you can delete the comment or you can mark the comment as completed. The completed comment and its replies remain in the document as a record of the issue's resolution.

### Insert a comment

- 1 On the Review tab, in the Comments group, click New Comment.
- 2 Type your comment under your name in the Comments balloon.



**TIP** To remove a comment, click it, and then on the Review tab, in the Comments group, click Delete.



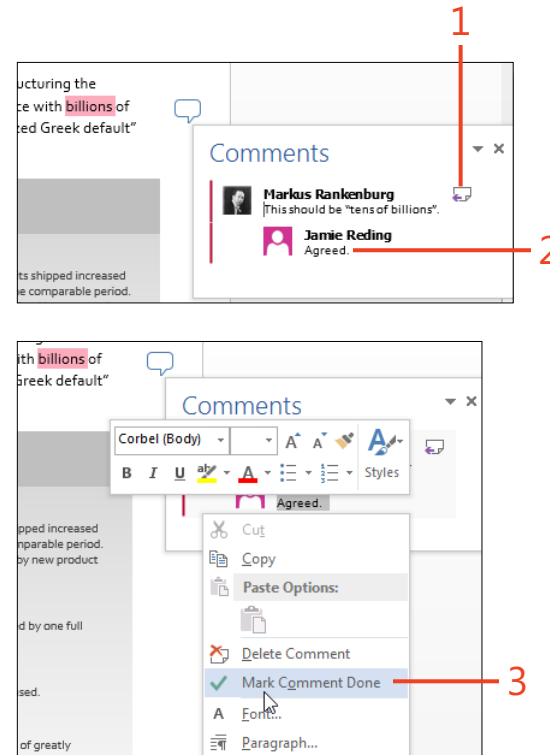
**TIP** If you use a tablet or a drawing pad, you can click Ink Comment and handwritten or draw your comment.



**TRY THIS** If your Office 2013 installation includes Microsoft OneNote, you can type notes in OneNote about your Word document. OneNote automatically links the note to the current location your document. To make a note in OneNote, select the Review tab in Word and click Linked Notes.

## Reply to a comment

- 1 Click the reply icon at the right side of the Comment balloon.
- 2 Type your reply in the Comment balloon under your name.
- 3 To mark a comment as completed, right-click the Comment balloon and click Mark Comment Done.



**TRY THIS** When you're reviewing your own documents, you might want to show some of your comments with a different color as a way of separating comments into categories. You can do this by slightly changing your user name in Word. On the Review tab, in the lower-right corner of the Tracking group, click the dialog box launcher (the small arrow). In the Track Changes Options dialog box, click Change User Name. In the User Name box, add a digit or other text to your user name. Select the Always Use These Values Regardless Of Sign In To Office check box and then click OK. Add a new comment or reply to an existing comment. (Don't forget to change back to your real user name after adding your comments.)

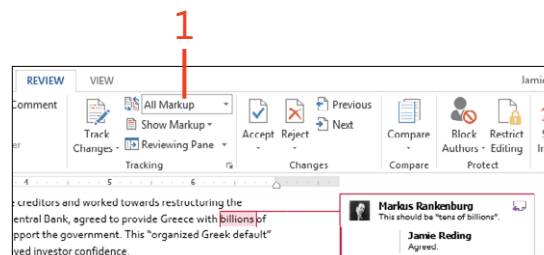
### Showing and hiding comments

When you're reading and responding to comments, you'll want to see all of them. When you're reading the document for other purposes, though, the lines and balloons can be distracting.

Word 2013 has a new Simple Markup view that hides the clutter and shows just an icon in the margin to indicate the presence of a comment.

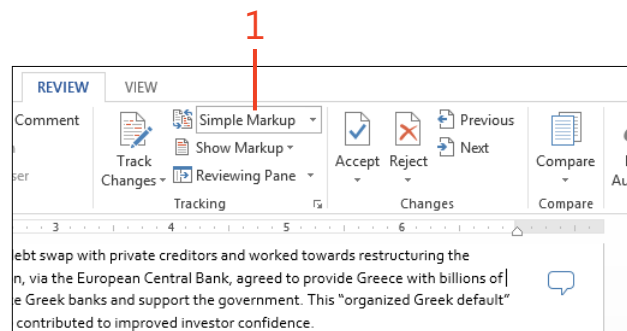
#### View all markup

- 1 On the Review tab, at the top of the Tracking group, click the drop-down list and select All Markup, if it isn't already selected.



#### View simple markup

- 1 On the Review tab, at the top of the Tracking group, click the drop-down list and select Simple Markup, if it isn't already selected. Click any Comment balloon to see its complete comment.



**TIP** When All Markup is selected, the comments appear in Outline or Draft view as tags in the text. You can position the cursor on a tag to see the comment or, on the Review tab, click Reviewing Pane.



**TIP** To control what items are shown in balloons, on the Review tab, in the Tracking group, click Show Markup, point to Balloons, and then choose a setting from the menu.

## Tracking changes

Whether you work on a document alone or with others, it's often important to keep a record of what's been changed, who

made the changes, and when the changes were made. In Word 2013, the Track Changes feature handles those details.

### Turn on Track Changes

- 1 On the Review tab, in the Tracking group, click Track Changes, if it isn't already selected.
- 2 Click the drop-down list at the top of the Tracking group and select All Markup, if it isn't already selected.
- 3 Edit or reformat the text.



**TIP** In Outline or Draft view, you can position the cursor on a change to see its information or, on the Review tab, click Reviewing Pane.



**CAUTION** The built-in keyboard shortcut to switch Track Changes on and off is Ctrl+Shift+E. If you suddenly start seeing red text in a document while you're editing, you might have pressed that combination by mistake.



**SEE ALSO** For information about how to show the Track Changes indicator on the status bar, see "Customizing the screen" on page 414.

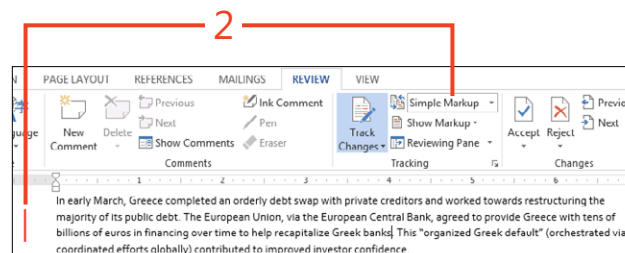
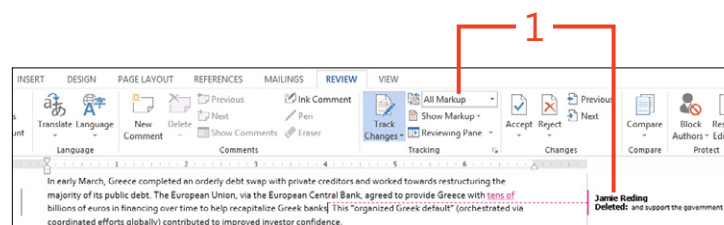
## Showing and hiding tracked changes

When you're revising a document, you'll want to show the details for tracked changes to decide which ones to keep or reject. Conversely, when you just want to read a document without distraction, you can use the new Simple Markup view to hide the lines and balloons, leaving just an unobtrusive change bar in the margin.

### View all markup or simple markup

- 1 On the Review tab, at the top of the Tracking group, click the drop-down list and select All Markup, if it isn't already selected.
- 2 At the top of the Tracking group, click the drop-down list and select Simple Markup. Click any change bar to return to All Markup view.

Whichever markup view you select, you can list all the changes and comments in the Reviewing Pane. Double-clicking an entry in that pane moves the cursor to the location in the document so that you can navigate quickly through the changes.



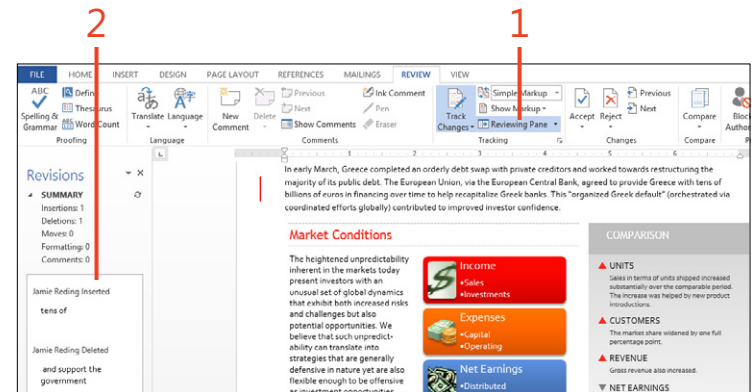
**TIP** When many reviewers have added changes to the document, you can show the changes from only one or a selected few of them. On the Review tab, in the Tracking group, click Show Markup, point to Specific People, and then clear the check boxes next to the names of reviewers whose changes you want to hide.



**CAUTION** When tracked changes and comments are hidden, they're still stored in the document and can be seen by anyone who receives a copy of the document. In some cases, that can be extremely embarrassing! Before you send out final copies of your document, use the procedures in "Accepting and rejecting changes" on page 358 to remove all changes and comments.

## Display the Reviewing pane

- 1 On the Review tab, in the Tracking group, click Reviewing Pane.
- 2 Double-click an item in the Revisions list.



**TRY THIS** Click the arrow next to Reviewing Pane to open the drop-down list and choose Reviewing Pane Horizontal. You can also drag the edges of the pane to resize it, or drag the pane's title to make the pane "float" over the document.



## Setting options for Track Changes

The Track Changes feature works well with the default settings, but it also offers a lot of flexibility for different ways of working with reviewed documents. You can turn on tracking in your

document and lock it so that the reviewers are required to record all of their changes. You can determine how changes and comments are displayed, and easily change those settings at will.

### Lock tracking

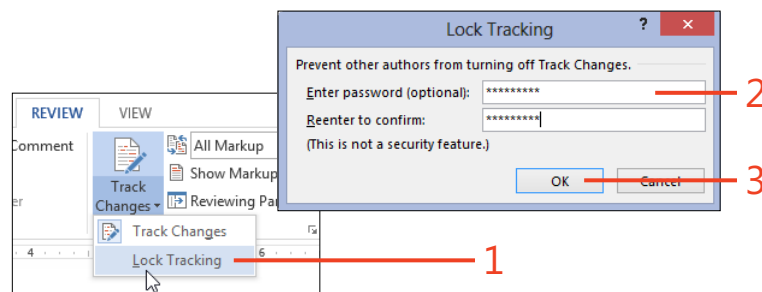
- 1 On the Review tab, in the Tracking group, click the bottom half of Track Changes and click Lock Tracking.

The Lock Tracking dialog box opens.

- 2 Enter a password in the top text box. Enter the password again in the second box.

If you don't want to protect Lock Tracking with a password, leave both boxes blank.

- 3 Click OK.

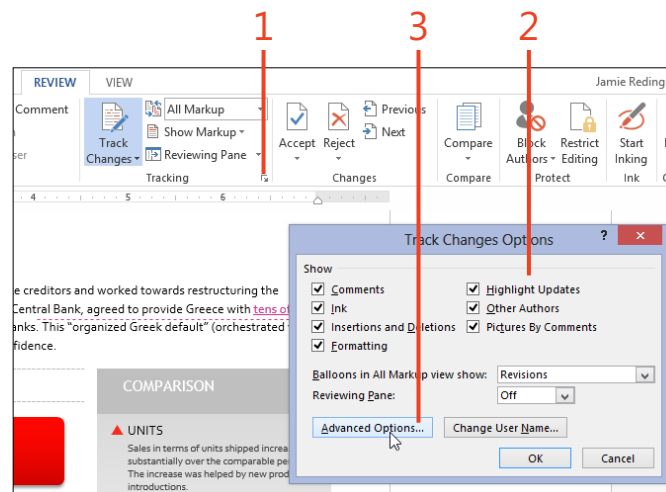


### Set common options and advanced options

- 1 On the Review tab, in the lower-right corner of the Tracking group, click the dialog box launcher.

The Track Changes Options dialog box opens.

- 2 Select or clear the check boxes for the kinds of changes that you want to display.
- 3 Click Advanced Options to change other settings, or click OK to return to the document.



**TIP** Most of the items in the Track Changes Options dialog box also appear on the Show Markup menu. The Advanced Options, however, are accessible only through the dialog box.

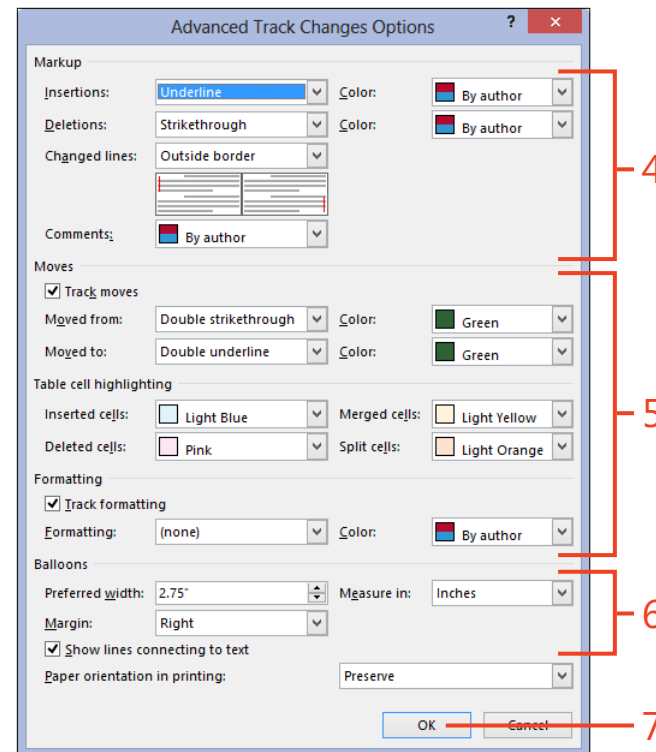
- 4 In the Markup section of the Advanced Track Changes Options dialog box, select the color and formatting you want to use for insertions and deletions, the location of the change lines, and the color of the shading applied to commented text.

You can choose the same color for all reviewers, or you can let Word choose a different color for each reviewer.

- 5 In the Moves, Table Cell Highlighting, and Formatting sections, choose the way you want those types of changes to appear. If you prefer not to track Moves and Formatting at all, clear their check boxes.
- 6 In the Balloons section, set the width of the column in which balloons are shown, the margin at which you want balloons to appear, and whether you want a line leading from each balloon to its corresponding change in the document.

For a document in portrait orientation, you can instruct Word to print in landscape orientation to avoid compressing the text column.

- 7 Click OK.



**TIP** Whether you set a specific color for changes by all reviewers or select By Author, that setting applies only on your computer. Other reviewers who open the document will see colors according to their settings. You can't be sure that a particular color will be assigned to a specific reviewer on other computers.

## Accepting and rejecting changes

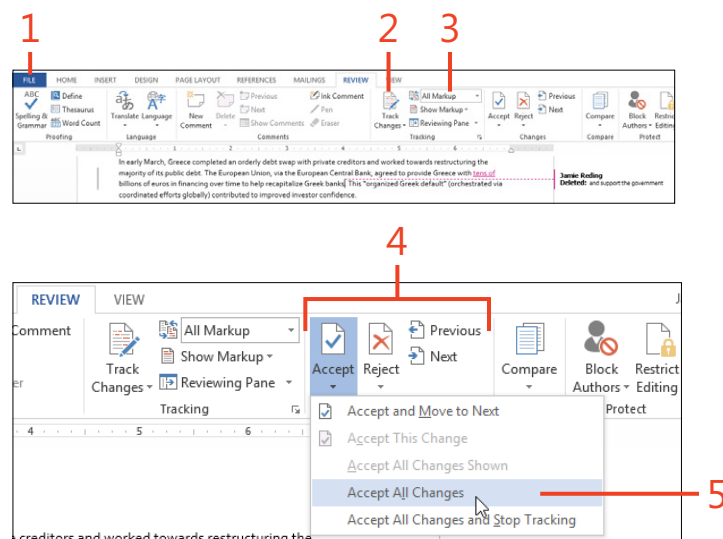
If a document contains tracked changes, all the information about each change will stay in the document until you accept or reject the change. Setting the markup view or the options so that you can't see the changes only hides them—it doesn't remove them. Anyone else who opens the document can easily show the changes again. That isn't necessarily a good thing.

### Accept or reject changes

- 1 Open a document that has been reviewed. If it's a Read-Only document, save it with a different name or in a different folder.
- 2 On the Review tab, in the Tracking group, ensure that Track Changes is not selected. If it is selected, click Track Changes to turn it off.
- 3 At the top of the Tracking group, click the drop-down list and select All Markup, if it isn't already selected.
- 4 Click Next or Previous in the Changes group to locate a change, or click a change in the text or in a balloon. Select Accept to make the change permanent, or Reject to remove the change. Continue clicking Accept or Reject until you've handled all the changes in the document.
- 5 Instead of working through the changes one at a time, you can click the bottom half of Accept or Reject and choose one of the other actions from the menu.

The Accept All Changes and Reject All Changes actions affect all the changes in the document at once. If you first use the Show Markup menu to hide some types of changes, the Accept All Changes Shown and Reject All Changes Shown actions affect only the changes that haven't been hidden.

For example, you might not want a client to see that you copied part of a report for another client and just changed the names. To protect yourself against such possibly embarrassing situations, you must review the changes and accept or reject them before you send your documents to others.



**SEE ALSO** For information about comparing two versions of the same document and marking the differences between them, see “Comparing reviewed versions” on page 359.



**SEE ALSO** For information about ensuring that the document doesn't contain any revisions or comments, see “Using the Document Inspector” on page 392.

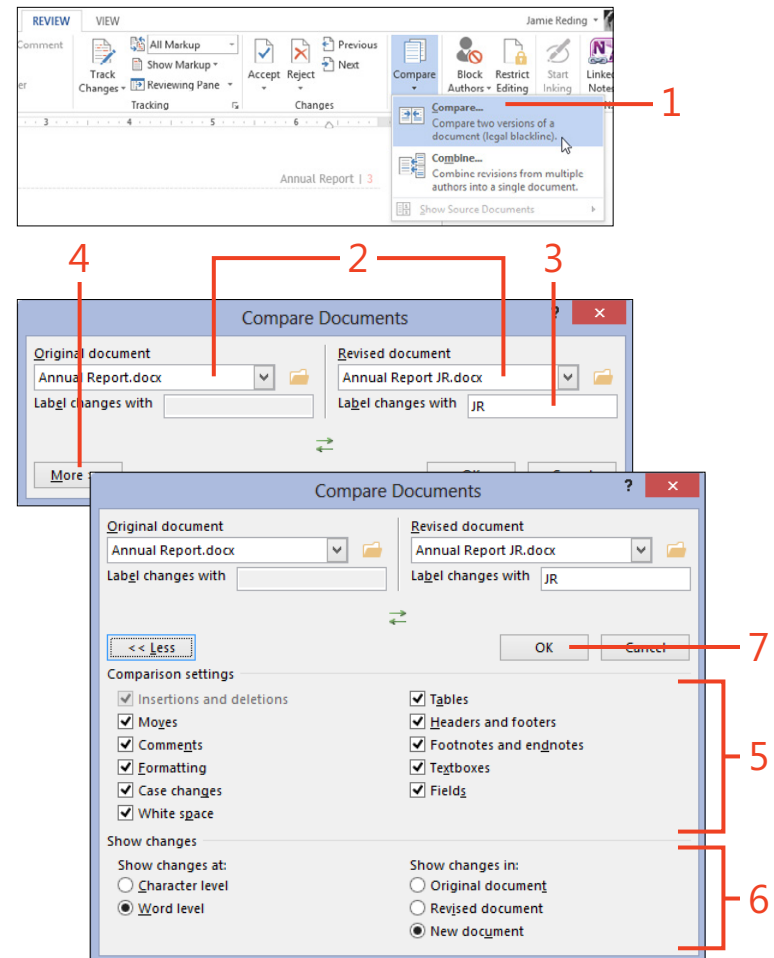
## Comparing reviewed versions

If you receive a reviewed copy of your document but the reviewer didn't have Track Changes turned on, you can have

Word 2013 mark the changes for you. All you need is the original document, the reviewed copy, and the Compare feature.

### Set up a comparison

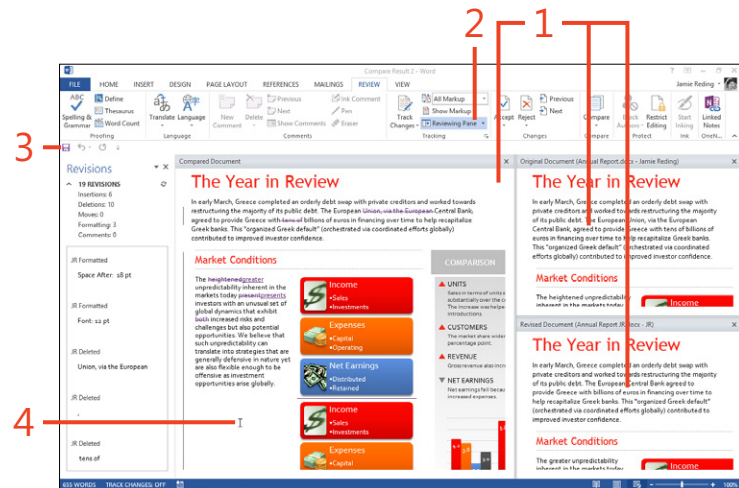
- 1 On the Review tab, in the Compare group, click Compare and choose Compare in the gallery.
- 2 The Compare Documents dialog box opens in its collapsed view.
- 3 Specify the original document by clicking the down-arrow and selecting it from the list of recently used documents, or you can select the folder icon to browse for another file. In the same way, specify the revised document.
- 4 If both versions of the document contain markup from the same reviewer, you can keep the two sets separated by entering a different name or other text in the Label Changes With text box.
- 5 If the dialog box is not expanded, click More.
- 6 Leave the check boxes selected in the Comparison settings section for only the types of changes that you want to have marked in the result of the comparison.
- 7 Choose whether the comparison will be made character by character or word by word. Also choose where the changes will be shown. You can choose for the changes to appear in one or the other of the documents being compared, or in a new third document.
- 8 Click OK.



**TIP** You can use the Compare feature to create “legal blacklining” in contracts; this way, each party can see what revisions were made.

### View the results of comparing documents

- 1 Examine the compared document (the one containing tracked changes) in the large pane. The two source documents are in smaller panes.
- 2 On the Review tab, in the Tracking group, click Reviewing Pane to show or hide the pane.
- 3 Save the compared document with the marked changes as a separate file.
- 4 Scroll through the compared document, accepting or rejecting the changes as you would for any document that has tracked changes. As you scroll the compared document, the source documents scroll to the same position so that you can see where the changes originated.



**TIP** To hide one or both of the source documents, click Compare, point to Show Source Documents, and then select which source documents you want to see.

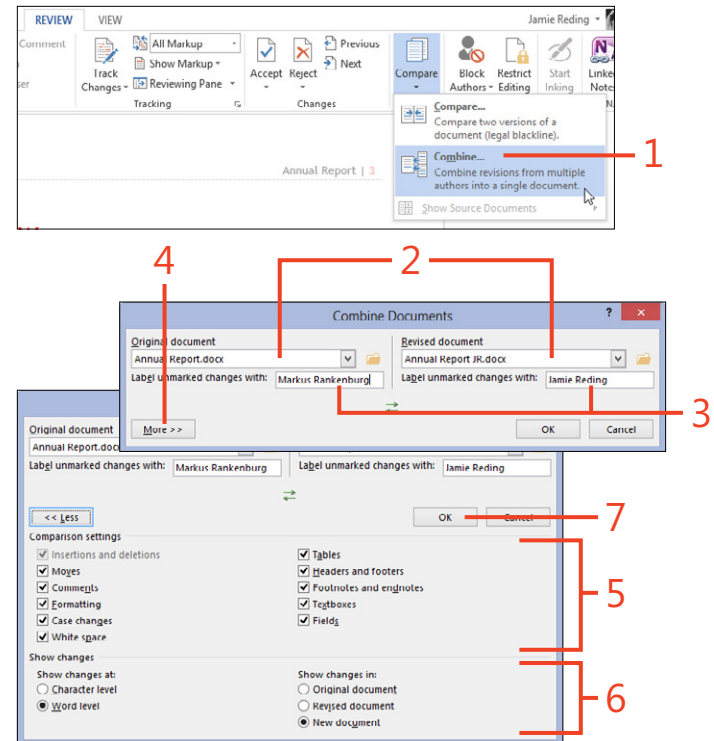
## Merging reviewed versions

If you've sent your document to several reviewers who edited it separately, but with Track Changes turned on, you can use the Combine feature to merge the versions into one document with

marked changes. You can then use the merged document to prepare a final version.

### Merge reviews

- 1 On the Review tab, in the Compare group, click Compare and choose Combine in the gallery.
- 2 Specify the first document containing review changes by clicking the down-arrow and selecting from the list of recently used documents, or you can select the folder icon to browse for another file. In the same way, specify the second document containing changes.
- 3 In each Label Unmarked Changes With text box, type a name or other text to identify the source of the changes in the corresponding version of the document.
- 4 If the dialog box isn't expanded, click More.
- 5 Leave the check boxes selected in the Comparison settings section for only the types of changes that you want to have marked in the result of the combination.
- 6 Choose whether the combination will be made character by character or word by word. Also, choose where the changes will be shown. You can choose for the changes to appear in one or the other of the documents being combined, or in a new third document.
- 7 Click OK and save the combined document.



**TIP** You can combine only two documents at a time. If you have several reviewed versions to combine, first combine two of them and then combine the result with a third reviewed version, and so on.



**TIP** When you combine documents, the result can contain formatting changes from only one of them. If Word detects formatting changes in either source document, a dialog box gives you a choice of which set of formatting changes to keep in the result.

# Index

## Symbols

- \* (asterisk), wildcard searches, 57
- @ (at sign), wildcard searches, 57
- ? (question mark), wildcard searches, 57

## A

- accepting document changes, 358
- accounts, blog, 375
- activating apps, 410
- adding
  - commands to the toolbar, 16
  - comments, 350
  - common misspellings to AutoCorrect, 72
  - rows and columns, 187
  - words to custom dictionaries, 69
- addresses
  - adding to envelopes, 316
  - formatting on envelopes, 323
- aligning
  - floating objects, 282
  - pictures and text, 283
- alignment
  - cells, 192
  - guides, 282, 283
  - paragraphs, 107
  - tables, 189
- anchor, for picture, 283
- applying set styles, 177
- apps
  - from the Office Store, 406
  - using in documents, 410
- art borders, 153

- artistic effects in pictures, 295
- asterisk (\*), wildcard searches, 57
- at sign (@), wildcard searches, 57
- attachments, email, 332
- AutoCorrect
  - adding common misspellings, 72
  - using AutoCorrect entries as shortcuts, 74
- AutoFormat
  - manual AutoFormat, 78
  - setting options for, 76
- AutoRecover, 28
- AutoText, 63

## B

- background for Office, 428
- backgrounds, removing from pictures, 293
- Backstage view
  - about, 20
  - printing, 34
  - templates, 41
- bibliographies, 264
- Block Authors command, 373
- blogging, 375
- blue squiggles
  - formatting, 69
  - grammar, 68
- bold, applying, 19
- booklets, printing, 34
- bookmarks
  - mail merge, 343
  - using, 211

- borders
  - applying around a page, 151
  - dragging row and column borders, 188
  - styles, 116
- Borders and Shading dialog box, 118
- breaks (line and page), 113
- Building Block Gallery content control, 218
- building blocks
  - creating, 62
  - inserting, 61
  - organizing, 64
- built-in footers, 138
- built-in headers, 138
- built-in page numbers, 138
- built-in themes, 173
- built-in watermarks, 237
- bulleted list styles, 120
- business cards, 326
- business documents, 2

## C

- captions, inserting, 262
- categories for blog posts, 377
- cells
  - alignment and direction, 192
  - merging and splitting, 191
  - setting tab stops in, 186
- center-align shortcut, 19
- changes
  - accepting and rejecting document changes, 358
  - tracking, 353
  - viewing changes made by coauthors, 373

- changing
  - bulleted or numbered lists, 121
  - character formatting, 103
  - numbering values, 126
- character formatting, changing, 103
- character styles
  - applying from the Styles gallery, 93
  - defined, 90
- characters
  - allowed in path file names, 24
- charts, building, 304
- Chart tool, 272
- Check Box content control, 218
- citation style, 264
- clipboard
  - pasting contents, 19
  - using, 45
- closing documents, 19
- cloud computing
  - logging on to Office with Microsoft Account, 10
- coauthors
  - communicating with, 374
  - working with, 372
- collapsing headings, 59
- color balance, pictures, 290
- colors
  - font, 104
  - paragraph shading, 116
  - themes, 173, 174
  - transparent color in pictures, 296
- columns
  - adding and deleting, 187
  - changing number of, 148
  - multicolumn, 148
  - resizing, 188
- Combo Box content control, 218

- commands
  - adding and removing from the toolbar, 16
  - assigning keyboard shortcuts to, 417
  - shortcuts for undo and redo, 19
- comments
  - adding, 350
  - replying to, 351
  - showing and hiding, 352
- comparing reviewed document versions, 359
- configuration, AutoRecover, 28
- content controls
  - grouping for a form, 222
  - inserting, 217
  - inserting document property content controls, 223
- contextual errors, 68
- contextual tab, objects, 14
- converting text to a table and back again, 184
- copying
  - Excel tables into Word, 183
  - formatting to another location, 106
  - items, 45
  - selections, 19
  - windows, 280
- counting words, 82
- cover pages, inserting, 154
- cropping pictures, 286
- cross-references, 216
- Ctrl key (for discontinuous selection), 42
- custom dictionaries, adding a word to, 69
- custom templates, basing a new document on, 168
- cutting
  - items, 45
  - selections, 19

## D

- data, changing in diagrams, 310
- date fields
  - formatting, 208
  - inserting using shortcuts, 210
- Date Picker content control, 218
- defaults
  - AutoCorrect, 72
  - headers and footers, 228
  - spacing in Normal style, 110
  - views, 17
- definitions, obtaining, 79
- deleting rows and columns, 187
- deselecting, 42
- diagrams, SmartArt, 308
- dialog boxes
  - creating new styles with, 99
  - modifying styles with, 95
- dictionaries
  - adding a word to custom dictionary, 69
  - custom, 432
  - definitions, 79
- digital signatures
  - adding, 403
  - trusted locations and publishers, 387
- discontinuous selection with Ctrl key, 42
- display
  - customizing, 414
  - options, 429, 439
  - resolution, 6
- Document Inspector, 392
- documents
  - accepting and rejecting changes, 358
  - adding comments to, 350
  - adding envelopes to, 320
  - apps, 410
  - basing on a custom template, 168
  - closing, 19



- comparing reviewed versions, 359
- digital signatures, 403
- exporting to other file types, 26
- getting information about, 23
- headers, 228
- linking to, 214
- linking to locations within, 212
- margins, 140
- merging reviewed versions, 361
- navigating, 50
- opening, 19, 20, 29
- passwords, 394
- presenting online, 378
- printing, 34
- privacy settings, 391
- properties, 223
- read-only or final, 400
- recovering, 28
- saving, 19, 24
- sending by email, 332
- setting options for track changes, 356
- sharing, 367, 370
- showing and hiding
  - comments, 352
  - tracked changes, 354
- starting
  - a new document, 40
  - Word with an existing document, 12
- tracking changes, 353
- Word Web App, 364
- downloading
  - proofing packages, 87
  - templates, 159
- dragging row and column borders, 188
- drawing shapes, 298
- Drop-Down List content control, 218

## E

- editing
  - headers and footers, 139
  - options, 436
  - PDF documents, 22
  - security, 397
  - templates, 161
  - in Word Web App, 368
- effects
  - themes, 174
  - WordArt, 312
- email, sending documents, 332
- Encarta Dictionary, 79
- endnotes
  - adding, 241
  - formatting, 242
- end points in shapes, 303
- entries (index), 255
- envelopes
  - address formatting, 323
  - printing multiple copies, 320
  - printing single envelopes, 316
  - size and print options, 318
- even and odd headers and footers, 171
- examples
  - creating new styles with, 98
  - modifying styles with, 94
- Excel
  - copying table into Word, 183
  - data source for mail merge, 337
- expanding
  - headings, 59
  - objects, 31
- exporting documents to other file types, 26
- expressions, wildcard
  - in find expressions, 56
  - in replace expressions, 58
- Extend Mode, F8 key, 43

## F

- F8 key (Extend Mode), 43
- Field dialog box, 200
- fields
  - cross-reference fields, 216
  - Field dialog box, 200
  - formatting using switches, 205
  - inserting from the keyboard, 202
  - inserting page and date fields using
    - shortcuts, 210
  - mail merge, 341
  - options, 438
  - StyleRef fields, inserting, 236
  - table of contents, 246
  - toggling field codes and updating, 203
  - XE fields, 255
- figures, tables of, 262
- File Block settings, 385
- files
  - default file format, 434
  - default location, 435
  - locations, 441
  - path names, 24
  - Protected View, 383
  - SkyDrive, 370
  - trusted locations, 387
- file types, exporting documents to, 26
- filling shapes, 300
- final documents, 400
- Find dialog, 52
- finding
  - templates, 159
  - using wildcards, 56
- Flickr, inserting pictures from, 277
- folders, user templates, 157
- fonts
  - character formats, 94
  - themes, 173, 174

- footers
  - extracting text for, 234
  - inserting, 138
  - odd and even, 171
  - unlinking, 232
- footnotes
  - adding, 241
  - formatting, 242
- formatting
  - changing character formatting, 103
  - copying to another location, 106
  - default file format, 434
  - diagrams, 309
  - envelope addresses, 323
  - fields using switches, 205
  - footnotes and endnotes, 242
  - Format Painter, 106
  - highlighting, 105
  - replacing, 54
  - revealing existing formatting styles, 132
  - security, 397
  - setting AutoFormat options, 76
  - styles
    - about, 90
    - adding borders and shading, 116
    - bulleted or numbered lists, 120
    - changing character formatting, 103
    - changing line and paragraph spacing, 110
    - changing numbering values, 126
    - changing paragraph alignment and indents, 107
    - creating and modifying, 94
    - kinds of, 90, 91
    - line and page breaks, 113
    - using multilevel numbered headings, 128
  - table of contents, 249

- text entries in the AutoCorrect list, 74
  - WordArt, 313
- forms, grouping content controls for, 222

## G

- galleries, selecting building blocks from, 61
- General tab, 428
- grammar
  - correcting, 68
  - options, 430
  - setting proofing language, 86
  - using the grammar pane, 70
- grouping
  - content controls for a form, 222
  - shapes, 302
- groups
  - adding tools to, 426
  - creating on the ribbon, 423

## H

- header rows, repeating, 193
- headers
  - changing, 228
  - extracting text for, 234
  - inserting, 138
  - odd and even, 171
  - portrait header on landscape pages, 145
  - unlinking, 232
- headings
  - collapsing and expanding, 59
  - list of, 50
  - spanning across multiple columns, 149
  - table of contents, 243
  - using multilevel numbered headings, 128
- Help system
  - about, 36
  - shortcut for, 19

- hide and show codes, 203
- hiding
  - comments, 352
  - ribbon, 15, 19
  - tracked changes, 354
- highlighting, 105
- hyperlinks
  - bookmarks, 211
  - cross-references, 216
  - inserting, 212
- hyphenation
  - automatic, 113
  - preventing, 115

## I

- illustrations, about, 270
- indents, 107
- indexing
  - about, 255
  - multiple indexes, 258
- Info page, 23
- inserting
  - art borders, 153
  - bibliographies, 268
  - blank pages at the end of a section, 136
  - bookmarks, 211
  - building blocks, 61
  - built-in page numbers, 138
  - charts, 304
  - comments, 350
  - content controls, 217
  - cover pages, 154
  - cross-references, 216
  - diagrams, 308
  - document property content controls, 223

## fields

- from the keyboard, 202
  - using the Field dialog box, 200
  - group content controls, 222
  - headers and footers, 138
  - hyperlinks, 212
  - indexes, 257
  - odd and even headers and footers, 171
  - online video, 278
  - page and date fields using shortcuts, 210
  - pictures, 284
    - from online, 276
    - from SkyDrive or Flickr, 277
    - from your computer, 274
  - screenshots, 280
  - section breaks, 136
  - shapes, 298
  - StyleRef fields, 236
  - table captions, 262
  - table of contents, 245
  - table of tables or table of figures, 263
  - tables, 181
  - tab stops on the ruler, 180
  - text, 44
  - text boxes, 196
  - watermarks, 237
  - WordArt, 312
- inspecting, documents, 392
- installing, apps for Office, 408
- Internet
- finding help on, 37
  - security, 390
- invitations, sending, 378
- italics, applying, 19

## J

- justifying text, 107

## K

- keyboard
- customizing, 417
  - inserting fields from, 202
  - recording macros, 444
  - selecting text, 43
  - shortcuts
    - about, 18
    - assigning to a command, 417
    - assigning to symbols, 420
- keytips, using with keyboard shortcuts, 18

## L

- labels
- mailing, 326
  - mail merge to, 335
- landscape pages, portrait headers, 145
- language
- setting proofing language, 86
  - translations, 83
- left-align, shortcut for, 19
- line borders, 151
- linebreaks, 113
- line spacing, changing with styles, 110
- linked styles, 90, 91
- linking
- a chain of text boxes, 198
  - to documents or webpages, 214
  - to Excel worksheets, 183
  - to locations within your document, 212
- lists
- bulleted or numbered lists with styles, 120
  - Drop-Down List content control, 218
  - including unnumbered paragraphs in, 126
  - multilevel list styles, 128
  - sorting, 225

## locations

- default file locations, 435
  - files, 441
  - trusted, 387
- Lock Tracking, 356
- logon, to Office with Microsoft Account, 10
- lost documents, recovering, 28

## M

- macros, recording, 444
- mailing labels, 326
- mail merge
- adding fields, 341
  - finishing, 346
  - recipients, 337
  - rules, 343
  - starting, 334
- main header, creating, 228
- manual AutoFormat, 78
- manual spell check, 70
- margins
- choosing, 140
  - mirror margins, 170
- marking
- document for a table of contents, 252
  - index entries, 255
  - text for no proofing, 88
- markup, viewing, 352, 354
- merging
- cells, 191
  - reviewed document versions, 361
- Microsoft Accounts
- logging on to Office, 10
  - Office Store apps, 406
  - setting up, 6
  - SkyDrive, 370
- Microsoft Excel 2013, charts, 304

## Microsoft Office

- logging on with Microsoft Account, 10
- Office clipboard, 48
- Microsoft PowerPoint 2013, charts, 304
- Microsoft SharePoint Workspace, 370
- minimize, ribbon, 415
- Mini Translator, 85
- mirror margins, 170
- modifying, styles, 94
- mouse, selecting text, 42

## N

- names, preparing a list of for sorting, 225
- Navigation pane
  - about, 50
  - organizing topics, 60
  - search feature, 51
- Normal.dotm, starting a new document, 40
- Normal style
  - default spacing, 110
  - shortcut for applying, 19
- Normal template, using, 156
- numbers
  - built-in page numbers, 138
  - changing values, 126
  - headings, using multilevel numbered headings, 128
  - numbered lists, styles, 120
  - Numbering Library, 125
- numeric fields, formatting, 207
- numeric picture switch, 205

## O

- objects
  - contextual tab, 14
  - expanding, 31
- odd and even headers and footers, 171

- Office Background, 428
- Office clipboard, 48
- Office.com, templates, 159
- Office Store, apps, 406
- OFFLINE, 36
- online
  - accounts, 32
  - pictures, inserting, 276
  - presentation of documents, 378
  - video, inserting, 278
- opening
  - documents, 19, 20
  - in Word Web App, 364
  - options for, 440
  - unsaved documents, 29
  - Word Web App in Word, 369
- options
  - Advanced page, 436
  - Display tab, 429
  - General tab, 428
  - spelling and grammar, 430
- Organizer, Building Blocks, 64
- orientation of pages, 144
- outline of shapes, 300
- Outline view
  - about, 17
  - organizing topics, 60
- overtyping
  - switching between insert and overtyping, 44
  - text, 44

## P

- pages
  - applying borders around, 151
  - fields, inserting using shortcuts, 210
  - inserting blank pages at the end of a section, 136

- inserting cover pages, 154
- numbers
  - built-in, 138
  - updating in the table of contents, 248
- orientation of, 144
- portrait headers on landscape pages, 145
- positioning pictures on, 282
- size of, 140
- paragraphs
  - breaks, 113
  - changing alignment and indents, 107, 109
  - changing spacing with styles, 110
  - numbered lists, 126
  - shortcuts for left-, right- and center-align, 19
  - styles
    - applying from Styles gallery, 92
    - defined, 90
- paragraph styles
  - applying from the Styles gallery, 92
  - defined, 90
- passwords, documents, 394
- pasting
  - a table from Excel, 183
  - clipboard contents, 19
  - items, 46
  - from Office clipboard, 48
  - using Paste Special, 45, 46
- PDF documents
  - editing, 22
  - saving, 26
  - using, 11
- pictures
  - aligning, 283
  - blog posts, 376
  - changing the appearance of, 290
  - content control, 218
  - cropping, 286

- inserting
  - from online, 276
  - from SkyDrive or Flickr, 277
  - from your computer, 274
- options, 437
- positioning on page, 282
- recoloring, 292
- removing backgrounds, 293
- replacing, 288
- resizing, 284
- special effects, 293, 295
- transparent color, 296
- watermarks, 239
- placeholders
  - bibliographies, 266
  - text, content controls, 219
- Plain Text content control, 218
- portrait headers, landscape pages, 145
- positioning, pictures on the page, 282
- posting
  - blog entries, 377
  - invitations, 378
- presentations, 379
- printing
  - business cards, 328
  - documents, 34
  - envelopes, 322
  - labels, 326, 331
  - multiple copies of an envelope, 320
  - options, 439
  - shortcut for, 19
  - single envelopes, 316
  - templates for two-sided printing, 170
- Print Layout view
  - about, 10, 17
  - using, 17

- proofing, changing the proofing language of
  - text, 86
- properties
  - content controls, 220
  - documents, 23, 223
- Protected View, 383
- publishers, trusted, 387

## Q

- question mark (?), wildcard searches, 57
- Quick Access Toolbar, 16
  - customizing, 421
- Quick Style gallery, 442
- Quick Tables building block gallery, 181

## R

- Reading view of Word Web App, 364
- Read Mode
  - about, 10
  - optimization of, 17
  - using, 30
- read-only documents, 400
- recoloring, pictures, 292
- recording, macros, 444
- recovering, documents, 28
- redo, shortcut for, 19
- red squiggles, 68
- rejecting, document changes, 358
- removing
  - backgrounds from pictures, 293
  - commands from the toolbar, 16
  - unwanted parts of pictures, 286
- repeating, header rows, 193
- Repeating Section content control, 218
- replacing
  - formatting, 54
  - pictures, 288
  - text, 54

- using wildcards, 56
- wildcards in replace expressions, 58
- replying, to a comment, 351
- resizing, rows and columns, 188
- resolution, display, 6
- restoring, using the Undo list, 49
- revealing, existing formatting, 132
- reviewing
  - document versions and comparing, 359
  - merging reviewed document versions, 361
- ribbon
  - about, 14
  - adding a ribbon item to the Quick Access Toolbar, 421
  - buttons
    - adding borders and shading with, 116
    - formatting text with, 103
  - changing paragraph alignment and indents, 107
  - hiding or showing, 19, 415
  - resizing pictures, 285
  - tabs and groups, 423
- Rich Text content control, 218
- right-align, shortcut for, 19
- rotating
  - pictures, 284
  - text in table cells, 192
- rows
  - adding and deleting, 187
  - repeating header rows, 193
  - resizing, 188
- ruler
  - changing paragraph alignment and indents, 107
  - tab stops, 180
- rules, mail merge, 343

## S

- saving
  - building blocks, 62
  - documents, 19, 24
  - options for, 440
  - templates, 163
- screen, customizing, 414
- screenshots
  - inserting, 280
  - using, 271
- ScreenTip Style list box, 428
- search, Navigation Pane, 51
- sections
  - breaks, inserting, 136
  - headers, 228
  - inserting blank pages at the end of, 136
- security
  - digital signatures, 403
  - Document Inspector, 392
  - document passwords, 394
  - editing and formatting, 397
  - marking documents read-only or final, 400
  - privacy settings, 390
  - Trust Center, 382
  - trusted locations and trusted publishers, 387
- selecting
  - objects behind text, 283
  - text, 42
  - text that has the same style, 102
- selections
  - copying, 19
  - cutting, 19
- shading
  - Borders and Shading dialog box, 118
  - styles, 116
- shapes
  - changing appearance of, 300
  - cropping to, 287
  - gallery, 271
  - inserting, 298
- SharePoint server
  - opening documents from, 20
  - SkyDrive, 370
- sharing
  - using SkyDrive, 370
  - with Word Web App, 367
- shortcuts
  - assigning, 417
  - inserting page and date fields using, 210
  - obtaining synonyms, 80
  - starting Word, 12
  - using AutoCorrect entries as shortcuts, 74
- show and hide codes, 203
- Show/Hide button, revealing formatting, 132
- showing
  - comments, 352
  - ribbon, 19
  - tracked changes, 354
- Simple Markup view
  - showing and hiding comments, 352
  - tracked changes, 10
- SkyDrive
  - inserting pictures from, 277
  - opening documents from, 20
  - sharing, 370
- SmartArt, 272
  - creating diagrams, 308
- social networking, with SkyDrive, 371
- sources, bibliographies, 265, 266
- spacing, changing line and paragraph
  - spacing, 110
- special effects, pictures, 295
- spelling
  - adding common misspellings to AutoCorrect, 72
  - correcting, 68
  - manual spell check, 70
  - marking text to ignore spelling, 71
  - options, 430
  - setting proofing language, 86
  - using AutoCorrect entries as shortcuts, 74
- splitting, cells, 191
- squiggles underlining text, 68
- starting the Word program, 12
- status bar
  - show or hide items, 414
  - word count, 82
- Style Inspector, 133
- StyleRef fields
  - headers and footers, 234
  - inserting, 236
- styles
  - about, 90
  - adding borders and shading, 116
  - bulleted or numbered lists, 120
  - changing
    - character formatting, 103
    - line and paragraph spacing, 110
    - numbering values, 126
    - paragraph alignment and indents, 107
  - citations, 264
  - creating and modifying, 94
  - custom styles, 234
  - envelope addresses, 324
  - gallery
    - applying character styles, 93
    - applying paragraph styles, 92
  - mail merge, 323
  - options, 442
  - revealing existing formatting, 132

- security, 397
- style sets, using, 173
- Styles pane, 100
- table of contents, 249
  - using multilevel numbered headings, 128
  - using table styles for uniform appearance, 194
- switches, formatting fields using, 205
- switching, views, 17
- symbols, assigning keyboard shortcuts to, 420
- synonyms, obtaining, 79

## T

- tab stops
  - creating on the ribbon, 423
  - inserting on the ruler, 180
- table cells, 186
- table of contents
  - generating, 243
  - multiple table of contents, 252
  - styles, 249
  - updating, 248
- tables
  - adding and deleting rows and columns, 187
  - alignment, 189
  - cell alignment and direction, 192
  - converting text to a table and back again, 184
  - copying an Excel table into Word, 183
  - inserting, 181
  - merging and splitting cells, 191
  - repeating header rows, 193
  - resizing rows and columns, 188
  - setting tab stops in table cells, 186
  - tables of tables and tables of figures, 262
  - text wrapping, 190
  - using table styles for uniform appearance, 194
- table styles, 90, 91, 194
- templates
  - basing a new document on a custom template, 168
  - blog posts, 375
  - customizing, 161
  - designing, 165
  - finding and downloading, 159
  - labels, 326
  - modifying and saving, 163
  - Normal template, 156
  - saving changes, 64
  - security, 397
  - starting documents with, 40
  - two-sided printing, 170
  - user templates folder, 157
- text
  - adding to shapes, 302
  - aligning, 283
  - converting to a table and back again, 184
  - direction in cells, 192
  - entering text in a new blank document, 40
  - extracting for headers and footers, 234
  - fields, formatting, 209
  - headers and footers, 228
  - inserting and overtyping, 44
  - marking
    - to ignore spelling, 71, 88
  - replacing, 54
  - selecting, 42
  - sorting selected list text, 226
  - translations of selected text, 84
  - watermarks, 238
- text boxes
  - as a shape object, 298
  - inserting, 196
  - linking a chain of text boxes, 198

- text wrapping
  - charts, 306
  - pictures, 282
  - tables, 190
- themes
  - using, 173
  - using table styles for uniform appearance, 194
- thesaurus, synonyms, 81
- thumbnails, Navigation Pane, 50
- toggling, field codes, 203
- tools, adding to groups, 426
- topics, organizing, 59
- touchscreens, 7
- tracking changes
  - setting options for track changes, 356
  - showing and hiding tracked changes, 354
  - Simple Markup view, 10
  - turning on track changes, 353
- translations, 83
- transparent color, pictures, 296
- Trust Center, 382
- trusted locations and trusted publishers, 387
- two-sided printing, templates, 170

## U

- underline, applying, 19
- undo
  - shortcut for, 19
  - using, 49
- unlinking, headers and footers, 232
- unsaved documents, recovering, 29
- updating
  - fields, 203
  - table of contents, 248
- user name and initials, 428
- user templates folder, 157

## V

- versions
  - comparing reviewed document versions, 359
  - exporting to earlier Word file formats, 26
  - merging reviewed document versions, 361
  - previous versions of Word
    - compatibility with Word 2012, 3, 21
    - saving new versions of documents, 25
- video, inserting online video, 278
- viewing markup, 352, 354
- views, switching, 17

## W

- watermarks, inserting, 237
- Web Layout view, about, 17
- webpages, linking to, 214
- what's new, 10
- white space, show or hide, 416
- wildcards
  - find and replace, 56
  - replace expressions, 58
- Windows 8, Word shortcut, 13
- windows, copying, 280
- WordArt, effects, 312
- words, counting, 82
- Word Web App, 11, 364
- worksheets, links to Excel worksheets, 183
- wrapping table text, 190

## X

- XPS (XML Paper Specification), support for, 26



# About the author

**Jay Freedman** has worked as a textbook editor, technical writer, and software engineer. He has answered users' online questions about Microsoft Word for more than 15 years, and has been awarded as a Microsoft Most Valuable Professional every year since 2001.

# What do you think of this book?

We want to hear from you!

To participate in a brief online survey, please visit:

[microsoft.com/learning/booksurvey](https://microsoft.com/learning/booksurvey)

Tell us how well this book meets your needs—what works effectively, and what we can do better. Your feedback will help us continually improve our books and learning resources for you.

Thank you in advance for your input!

**Microsoft**  
Press