

Microsoft®

plain
simple



Microsoft®

Office 2010

Your easy, colorful, SEE-HOW guide to Office!

Katherine Murray

PUBLISHED BY
Microsoft Press
A Division of Microsoft Corporation
One Microsoft Way
Redmond, Washington 98052-6399

Copyright © 2010 by Gerald Joyce, Marianne Moon, and Katherine Murray

All rights reserved. No part of the contents of this book may be reproduced or transmitted in any form or by any means without the written permission of the publisher.

Library of Congress Control Number: 2010928517

Printed and bound in the United States of America.

6 7 8 9 10 11 12 13 14 QGT 6 5 4 3 2 1

Distributed in Canada by H.B. Fenn and Company Ltd.

A CIP catalogue record for this book is available from the British Library.

Microsoft Press books are available through booksellers and distributors worldwide. For further information about international editions, contact your local Microsoft Corporation office or contact Microsoft Press International directly at fax (425) 936-7329. Visit our Web site at www.microsoft.com/mspress. Send comments to mspinput@microsoft.com.

Microsoft, Microsoft Press, Access, ActiveX, Excel, Hotmail, InfoPath, Internet Explorer, OneNote, OpenType, Outlook, PivotChart, PivotTable, PowerPoint, SharePoint, SkyDrive, SmartArt, Windows, Windows Live, and Windows Vista are either registered trademarks or trademarks of Microsoft Corporation in the United States and/or other countries. Other product and company names mentioned herein may be the trademarks of their respective owners.

The example companies, organizations, products, domain names, e-mail addresses, logos, people, places, and events depicted herein are fictitious. No association with any real company, organization, product, domain name, e-mail address, logo, person, place, or event is intended or should be inferred.

This book expresses the author's views and opinions. The information contained in this book is provided without any express, statutory, or implied warranties. Neither the authors, Microsoft Corporation, nor its resellers, or distributors will be held liable for any damages caused or alleged to be caused either directly or indirectly by this book.

Acquisitions Editor: Juliana Aldous
Developmental Editor: Devon Musgrave
Project Editor: Carol Vu
Editorial Production: MPS Limited, A Macmillan Company

Technical Reviewer: Roger LeBlanc
Cover: Girvin
Copy Editor: Roger LeBlanc
Proofreader: Mary Rosewood
Indexer: Seth Maislin

Contents

Acknowledgments xiii

1

About This Book 1

No Computerspeak!	1
A Quick Overview	2
What's New in Office 2010?.....	5
A Few Assumptions	6
A Final Word (or Two)	7

2

Working in Office 2010 9

What's What in Office 2010?	10
Using the Ribbon	12
Using Galleries and Lists	14
Using Shortcut Menus and Dialog Boxes.....	16
Using Only the Keyboard	18
Moving and Copying Content.....	20
Working with Backstage View	22
Getting Help.....	24
Saving Your Work.....	26
Office's File Formats.....	27



What do you think of this book? We want to hear from you!

Microsoft is interested in hearing your feedback so we can continually improve our books and learning resources for you. To participate in a brief online survey, please visit:

www.microsoft.com/learning/booksurvey/

3

Common Tasks in Office

29

Working with Old Documents	30
Inserting Pictures	32
Changing the Size of a Picture	34
Editing a Picture	36
Enhancing Your Pictures	38
Making Your Pictures Pop	39
Adding Clip Art	40
Inserting Screenshots	42
Adding Shapes	43
Formatting a Shape	44
Inserting the Date and Time	45
Creating Stylized Text	46
Inserting a SmartArt Diagram	48
Translating Your Text	50
Researching a Subject	52

4

Viewing and Editing Text in Word

53

What's Where in Word 2010?	54
Creating a New Document	56
Composing Different Types of Documents	58
Word's Views	60
Reading a Document	62
Editing Text	63
Discovering the Many Ways to Work with Text	64
Navigating Your Document	66
Replacing Text	68
Correcting Your Spelling and Grammar	70
Correcting Text Automatically	72
Adding Page Numbers	74

Co-Authoring in Word 2010	76
Marking and Reviewing Changes in a Document	78
Comparing Documents Side by Side	80

5

Formatting in Word 81

Controlling the Look: Themes, Styles, and Fonts	82
Choosing a Theme for Your Document	83
Formatting Text with Styles	84
Choosing Styles from the Styles Window	85
Changing Character Fonts	86
Setting Paragraph Alignment	88
Adjusting Paragraph Line Spacing	89
Setting Spacing Between Paragraphs	90
Indenting a Paragraph	92
Formatting with Tabs	93
Adding Emphasis and Special Formatting	94
Copying Your Formatting	95
Creating a Bulleted or Numbered List	96
Formatting a List	97
Creating a Table from Scratch	98
Using a Predesigned Table	99
Creating a Table from Text	100
Adding or Deleting Rows and Columns	101
Formatting a Table	102
Improving the Layout with Hyphenation	103
Laying Out the Page	104
Creating Special Page Setups	106
Creating Headers and Footers	108
Changing Page Orientation Within a Document	110
Flowing Text into Columns	112

Creating Sections	114
Wrapping Text Around a Graphic	116
Sorting Your Information	118
Reorganizing a Document	120

6

Working with Special Content in Word **121**

Numbering Headings and Lines	122
Inserting a Cover Page	124
Inserting Information with Additional Actions	125
Inserting an Equation	126
Adding a Sidebar or a Pull Quote	127
Inserting a Watermark	128
Creating Footnotes and Endnotes	130
Inserting a Citation	132
Creating a Table of Contents	134
Printing an Envelope	136
Printing a Mailing Label	138
Mail Merge: The Power and the Pain	139
Creating a Form Letter	140
Finalizing Your Document	142

7

Working in Excel **145**

What's Where in Excel?	146
Excel 2010 Basics	147
Using a Predefined Workbook	148
Choosing a Theme for Your Worksheet	149
Entering the Data	150
Editing the Data	152
Formatting Cells	154
Formatting Numbers	155

Moving, Copying, and Pasting Data	156
Adding and Deleting Columns and Rows	158
Hiding Columns and Rows	160
Creating a Data Series	161
Formatting Cell Dimensions	162
Organizing Your Worksheets	164
Preparing for Printing	166
Printing a Worksheet	168
Adding and Viewing Comments	170
Working with the Excel Web App	172

8

Analyzing and Presenting Data in Excel **173**

Applying Conditional Formatting to Cells	174
Customizing Conditional Formatting	176
Cell References, Formulas, and Functions	177
Adding Sparklines	178
Introducing Formulas	180
Doing the Math	182
Summing the Data	184
Making Calculations with Functions	186
Creating a Series of Calculations	188
Troubleshooting Formulas	189
Creating a Table	190
Sorting the Data	192
Filtering the Data	193
Separating Data into Columns	194
Creating Subtotals	195
Summarizing the Data with a PivotTable	196
Adding Slicers	198
Reviewing the Data	200
The Anatomy of a Chart	201

Charting Your Data	202
Formatting a Chart	204
Customizing a Chart	206

9

Creating a PowerPoint Presentation **207**

What's Where in PowerPoint?	208
Creating a Presentation	210
Set the Page Background	212
Entering Content	214
Formatting a Slide	215
Editing a Presentation	216
Adding Headers and Footers	218
Reusing Slides	219
Modifying the Default Layout	220
Inserting a Table	222
Turning Text into SmartArt	224
Applying WordArt Styles to Text	225
Animating Items on a Slide	226
Customizing Your Animation	228
Adding an Action to a Slide	229
Adding and Editing Video	230
Adding Sound to Your Slides	232
Setting Slide Transitions	234
Creating a Photo Album	235

10

Presenting a PowerPoint Slide Show **237**

Exploring Your Presentation Options	238
Recording a Narration	240
Timing a Presentation	242
Adding Speaker Notes	244

Customizing the Presentation	246
Reviewing a Presentation	247
Creating Different Versions of a Slide Show	248
Printing Handouts	249
Running a Slide Show	250
Sharing a Presentation	252
Publishing Your Slides	253
Packaging Your Presentation	254
Creating Pictures of Your Slides	256
Saving Your Presentation as a Video	257
Broadcasting Your Presentation	258
Changing Slide-Show Settings	260

11

Working with Messages in Outlook **261**

What's Where in Outlook Messages?	262
Sending E-mail	264
Receiving and Reading E-mail	266
Replying to and Forwarding a Message	268
Staying in Touch with Outlook Social Connector	270
Sending or Receiving a File	272
Formatting E-mail Messages	274
Managing Messages with Quick Steps	276
Signing Your E-mail	278
Reading RSS Items	280
Setting Up E-mail Accounts	282

12

Organizing with Outlook **283**

A Quick Look at Outlook's Organizing Abilities	284
Setting an Appointment	286
Keeping Track of Your Schedule	288

Sharing Calendars	290
Viewing Your Group's Schedule	292
Scheduling a Meeting	294
Managing Your Contacts	296
Keeping Track of Your Tasks	298
Assigning Tasks	300
Tacking Up Notes	301
Creating and E-mailing Contact Business Cards	302

13

Creating a Publication in Publisher 305

Exploring the New Look of Publisher 2010	306
Starting with a Template	308
Creating a Publication from Scratch	310
Adding Text	312
Flowing Text Among Text Boxes	314
Tweaking Your Text	316
Inserting and Modifying a Picture	318
Adding a Table	320
Repeating Objects on Every Page	322
Adding Building Blocks	323
Arranging Objects on the Page	324
Stacking and Grouping Objects	326
Flowing Text Around an Object	328
Reusing Content	330
Inserting Your Contact Information	332
Checking Your Publication	333
Sending a Publication as E-mail	334
Printing Your Publication	336

14

Organize and Share Information in OneNote 2010 339

What's Where in OneNote?	340
OneNote Basics: Gathering Your Thoughts	341
Creating a OneNote Notebook	342
Adding and Working with Sections	343
Inserting and Working with Notes Pages	344
Inking in OneNote	346
Adding Audio Notes	348
Grabbing Web Clippings	350
Sharing Notes in Word and PowerPoint	352
Saving Outlook Data to OneNote	354
Working with Side Notes and Unfiled Notes	356

15

Working in Access 359

What's Where in Access?	360
Databases: A Simple Approach	362
Creating a Database from a Template	364
Using an Existing Database	366
Adding a Data Table	368
Adding and Changing Fields and Records	370
Adding Data to a Table	372
Importing Data	374
Exporting Data	376
Defining Table Relationships	378
Creating a Form	380
Creating a Report from the Data	382
Formatting Reports	384
Querying Information from Your Data Tables	386
Analyzing Data with a PivotChart	388

16

Customizing and Securing Office 391

Customizing the Ribbon	392
Customizing the Quick Access Toolbar	394
Customizing the Work Area	396
Customizing Your Editing	398
Changing Your User Information	399
Customizing the Spelling and Grammar Checkers	400
Customizing Your Spelling Dictionaries	401
Changing the Location and Type of Saved Files	402
Understanding Security in Office 2010	404
Changing File Validation	406
Choosing What's Displayed in Protected View	408
Password Protecting a File	409
Limiting File Changes	410
Recovering Unsaved Versions of a File	412
Setting AutoRecover Options	413
Signing a Document or Workbook with a Digital Signature	414
Setting Macros, Add-Ins, and ActiveX Controls	416
Checking File Compatibility	417
Index	419
About the Author	433



What do you think of this book? We want to hear from you!

Microsoft is interested in hearing your feedback so we can continually improve our books and learning resources for you. To participate in a brief online survey, please visit:

www.microsoft.com/learning/booksurvey/

Acknowledgments

Every book has its own personality and style, and each project needs the talents and energies of many people in order to produce the beautiful, easy-to-read book you now hold in your hands. Writing this book has been a blast, in large part thanks to the following folks:

- Marianne Moon and Jerry Joyce, for developing a great, fun-to-write series that truly meets readers' needs
- Juliana Aldous, my acquisitions editor at the start of this project, who thought of me for the writing of this book
- Claudette Moore, my agent at Moore Literary Agency, for working out all the details and keeping things moving in her always kind and supportive way
- Carol Vu, project editor, for overseeing every detail of this project, keeping chapters flowing (through multiple passes), and always responding quickly to questions and comments
- Roger LeBlanc, for a great-as-usual copy edit, catching phrases that might make readers stumble and making sure the graphics are as clear as possible, and
- The composition team for their careful work in laying out this book in a way that helps readers understand and complete Office tasks easily



2

Working in Office 2010

In this section:

- What's What in Office 2010?
- Using the Ribbon
- Using Galleries and Lists
- Using Shortcut Menus and Dialog Boxes
- Using Only the Keyboard
- Moving and Copying Content
- Working with Backstage View
- Getting Help
- Saving Your Work
- Office's File Formats

In this section of the book, we'll discuss the various programs in Microsoft Office 2010—their similarities and differences, and the ways they work separately and together. Depending on which version of Office you're running, you might have some or all of the programs installed on your computer. All the Office programs have elements in common—namely, the ribbon and Backstage view. The ribbon brings you all the tools you need by displaying them in tabs and tab groups across the top of the application window. You can customize the ribbon in Office 2010 to create your own tabs and tab groups. And Backstage view enables you to easily create, open, print, save, and share files by pulling together all the file management tools in one easy-to-use window.

This chapter focuses on these two common features available throughout the Office 2010 applications, and it introduces you to the various tools and procedures you'll use to navigate the programs using both the mouse and the keyboard. Along the way, you'll learn how to use the dialog boxes you discover, work with shortcut menus you display by right-clicking an element, use keyboard shortcuts to speed up your work, use Paste with Live Preview to paste copied information just the way you want it to appear, and use various Help features to learn more about tools and tasks in Office 2010.

What's What in Office 2010?

There are a number of versions of Microsoft Office 2010 available for users with differing needs. If you work with Office 2010 in a large corporate setting, you may be using Office Professional Plus 2010, which includes a larger number of Office applications than, say, Office Home and Business 2010. Here's a quick rundown. Find your version in this list so that you know which programs are likely to be available in your copy of Office 2010:

- Office Professional Plus 2010 brings together all the applications, with an emphasis on connectivity and mobility. In this version, you'll find Word, Excel, Outlook, PowerPoint, Publisher, Access, OneNote, InfoPath, SharePoint Workspace, and Communicator.
- Office Professional 2010 focuses on functionality by including the more popular programs, including Word,

Excel, Outlook, PowerPoint, Publisher, Access, and OneNote.

- Office Home and Business 2010 offers the reliable standard applications to home and small business users who need power and dependability but aren't likely to need data management or connectivity features. The programs in this version include Word, Excel, Outlook, PowerPoint, and OneNote.

The following list introduces you to the most common programs in Microsoft Office 2010 and gives you a brief description of each program's purpose. Depending on which version of Office 2010 you have and whether you purchased any additional Office programs, you might have some or all of these programs installed on your computer.

Microsoft Office 2010 Programs

Microsoft Access 2010 is a relational database program for storing, retrieving, and analyzing data.

Microsoft Excel 2010 is a worksheet program for organizing, analyzing, and graphing data.

Microsoft OneNote 2010 is an electronic note-taking program for gathering, sharing, and organizing handwritten, typed, copied, drawn, or recorded notes.

Microsoft Outlook 2010 is an e-mail program and a great way to manage your contacts, tasks, and schedules.

Microsoft PowerPoint 2010 is a program for developing and sharing professional presentations.

Microsoft Publisher 2010 is a desktop publishing program for intricate placement of text and graphics on the printed page or on the Web.

Microsoft SharePoint 2010 is a program that enables you to create a shared workspace where you and team members can share files, create document libraries, discuss projects, and more.

Microsoft InfoPath 2010 (Designer and Filler) is a set of two programs that make it easy to design effective forms and enter the data you want to collect.

Microsoft Word 2010 is a powerful word processing program for doing everything from writing a letter to writing a novel to creating mass mailings.

Microsoft Office Tools are programs you can use in conjunction with the main Office programs:

- **Microsoft Clip Organizer** provides easy access to Clip Art and similar content.
- **Microsoft Office 2010 Language Preferences** control the languages identified and used in your programs.
- **Microsoft Office Upload Center** enables you to upload files to Web servers using the Microsoft Office Upload Center tool.
- **Microsoft Office Picture Manager** organizes, edits, and creates quick access to your pictures.

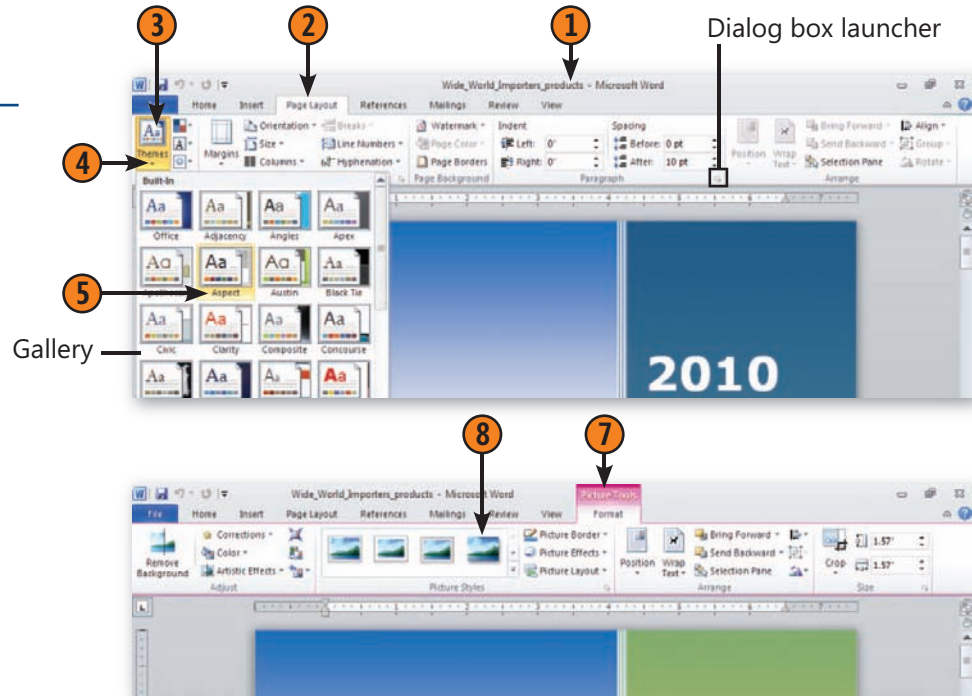
Using the Ribbon

All Office 2010 programs now use the ribbon to bring you the tools you need to create, work with, save, and share your files. The ribbon is organized in a similar way in all programs, organizing tools on tabs that reflect common tasks you want to complete in each application. For example, in Word, the tabs are Home, Insert, Page Layout, References, Mailings, Review, View, and Add-Ins.

Within each tab, *tab groups* contain tools related to a specific aspect of that task. The Insert tab in Word, for example, includes tab groups for Pages, Tables, Illustrations, Links, Header & Footer, Text, and Symbols. When you want to add a picture to your Word document, you click the Insert tab and then click Picture in the Illustrations group to complete the task.

Explore the Ribbon

- 1 Open any Office 2010 program.
- 2 Click a tab on the ribbon.
- 3 Click a button to execute a command.
- 4 Click a down arrow to open a gallery or a list, or click a dialog box launcher to open a dialog box.
- 5 Point to an item in a gallery to see its effect on the content of your document.
- 6 Click an object in the program window.
- 7 Click the contextual tab that appears.
- 8 Click the tool you would like to use to work with the selected object.



Tip

The ribbon is composed of tabs, groups, and tools. When the ribbon is minimized, you see only the tabs. You can display the full ribbon by clicking a tab or pressing Ctrl+F1.

See Also

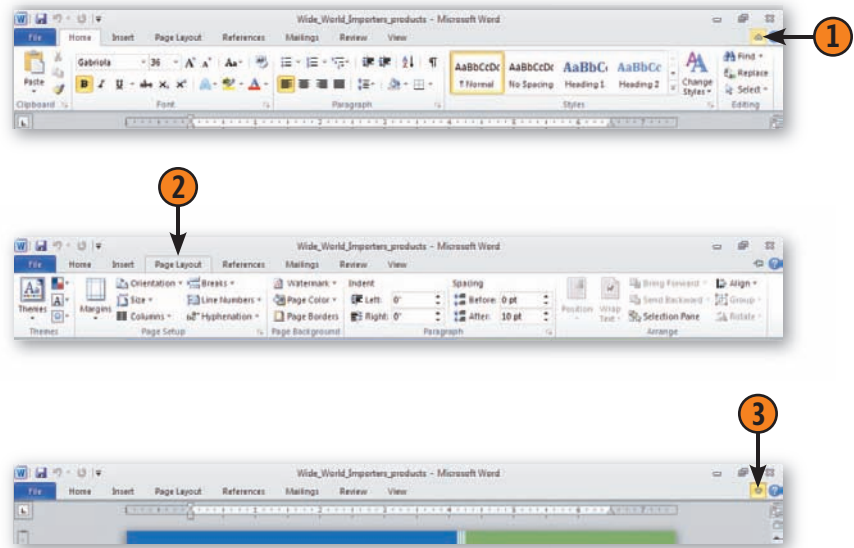
Read "Customizing the Ribbon" on pages 392–393 if you'd like to learn how to create your own tabs and tab groups so that you can customize the ribbon for your Office 2010 programs.

Set the Ribbon Display

- 1 When you begin using Office 2010, the ribbon is displayed by default. Hide the ribbon by clicking the Minimize The Ribbon.
- 2 Display the ribbon by clicking a tab. The ribbon appears until you click a tool or click in your document.
- 3 To redisplay the ribbon, click Maximize The Ribbon.

Try This!

With the ribbon in its displayed state, double-click the active tab to minimize the ribbon, and then click any tab to display the ribbon temporarily. Click in your file to minimize the ribbon again. Double-click the active tab to have the ribbon always displayed. Press Ctrl+F1 to hide the ribbon, and press Ctrl+F1 again to have the ribbon always displayed.



Using Galleries and Lists

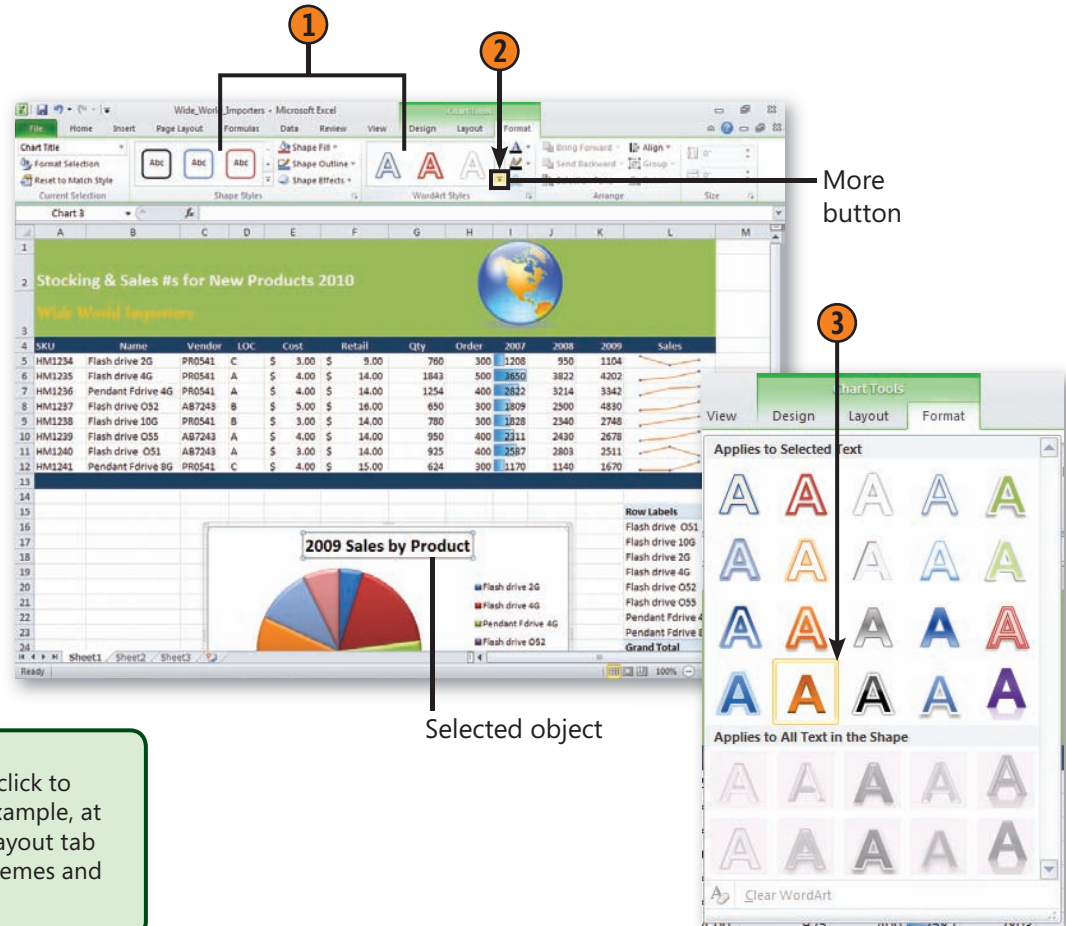
Each tab in an Office 2010 program offers you a different set of tools related to a specific task. The File tab, which contains Backstage view, and the Home tab, offering the most common tools, appears in all Office 2010 programs.

Within each tab you'll find tab groups, displaying tools you can click to execute a command or display a gallery. The different lists and galleries offer you ready-made styles and options you can apply to the content in your document.

Explore the Galleries

- 1 In any Office 2010 program, locate a tab group that shows examples of styles or options you can select. You can also click an object in the file to display a contextual tab for that item.
- 2 Click the More button in the lower right corner of the display.
- 3 Point to the various choices in the gallery. The changes are previewed in your file. Click the option you want to apply.

Continue exploring the different tabs and galleries in this and other Office programs.



Tip

Some galleries also include commands you can click to continue your work with a specific object. For example, at the bottom of the Themes gallery in the Page Layout tab of Word and Excel, you'll find the Browse For Themes and Save Current Theme commands.

Display Lists and Choose Commands

- 1 To display a list of commands on a tab, click any tool showing a down arrow.
- 2 On the displayed list, click a command with a right-pointing arrow to display additional choices for that command.
- 3 Click a command with an ellipsis (...) to open a related dialog box.

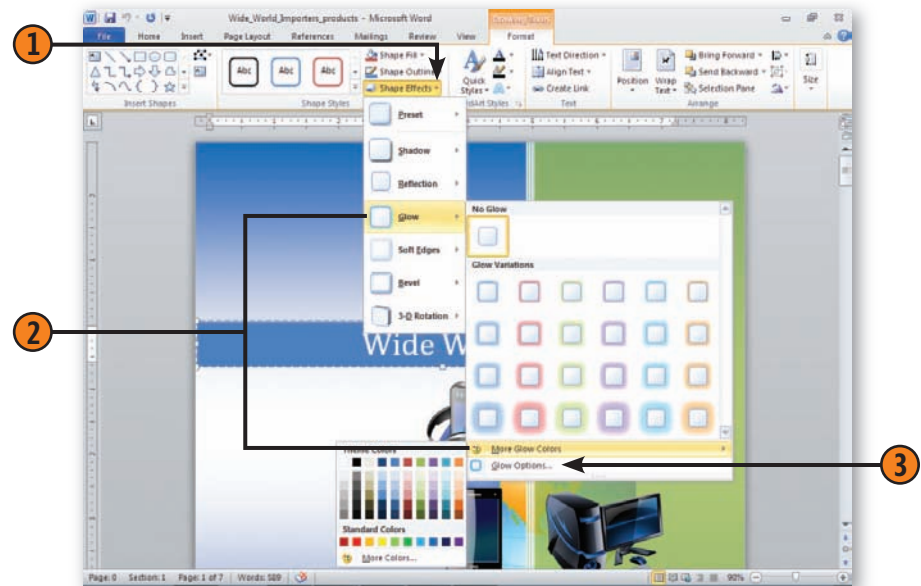
To close a list without executing a command, click outside the list.

Use the Tools

- 1 Point to a tool on the toolbar, and wait for a ScreenTip, showing the tool button's name, to appear.
- 2 Some tools have two parts: the tool button and a down arrow. The two parts of the tool are highlighted independently. To apply the setting shown on the button, click the tool. To display a list of choices for that tool, click the down arrow.
- 3 If a tool button looks "pressed," click it again if you want to turn off that feature.

See Also

Read "Customizing the Quick Access Toolbar" on pages 394–395 for information about modifying the Quick Access toolbar in your favorite Office 2010 applications.



Using Shortcut Menus and Dialog Boxes

Word 2010 also offers many shortcut menus and dialog boxes that provide additional ways to choose the tools and settings you need. You can right-click an object in your file to display

a shortcut menu showing choices related to that object, and you can click dialog box launchers to display dialog boxes of options related to the task you want to complete.

Use the Shortcut Menus

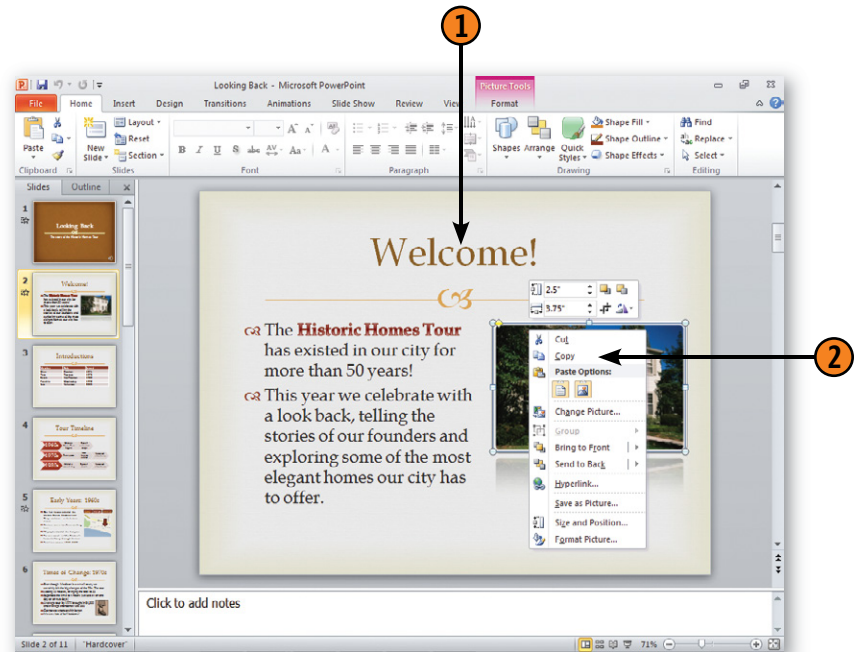
- 1 Right-click any content or location in your program where you want to execute an action.
- 2 Choose the action you want from the shortcut menu that appears.

Tip

Items that are gray on menus or toolbars are items that aren't available at the moment. For example, if you haven't selected anything, the Cut and Copy commands are gray because there's nothing selected to cut or copy.

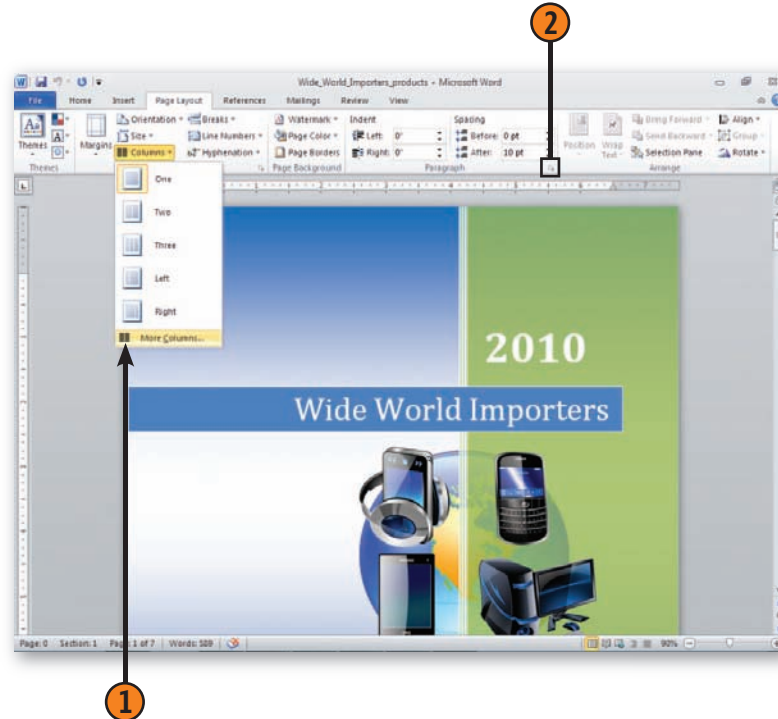
Tip

You can use a shortcut key to choose a tool in a shortcut menu by typing the underlined letter in the tool you want to select.

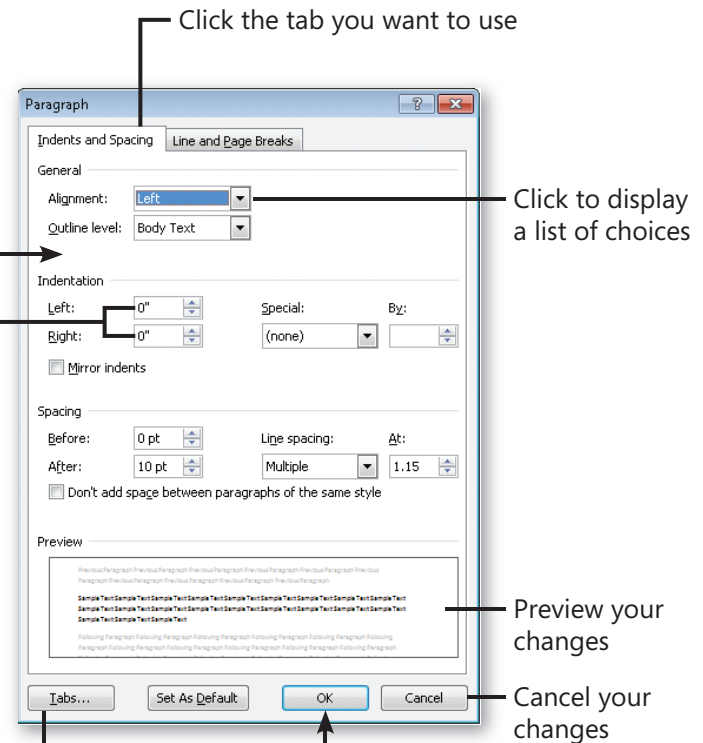


Working with Dialog Boxes

- 1 Click any command that shows an ellipsis (...) or
- 2 Click a dialog box launcher in a tab group on the ribbon.
- 3 Choose the settings you want to apply to the item.
- 4 Click OK to save your changes.



Type a value or use the arrows to increase or decrease the value



Display a different dialog box

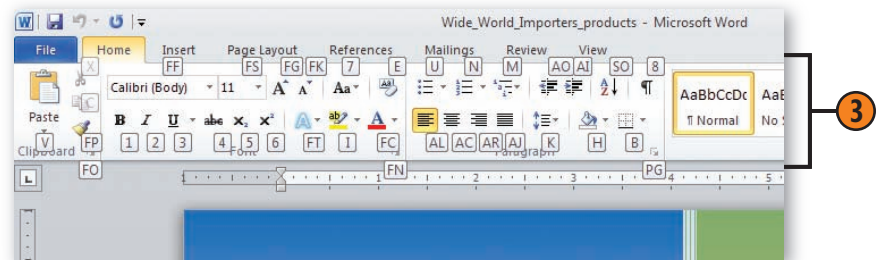
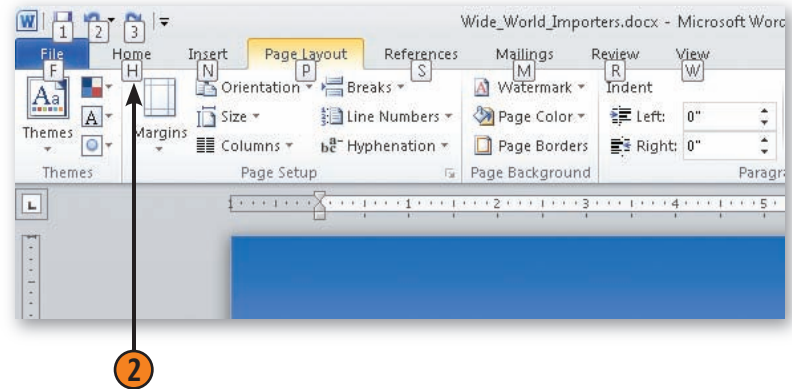
Using Only the Keyboard

If you prefer to keep your hands on the keyboard instead of using the mouse, you can do almost everything using Office and program-specific keyboard shortcuts. By activating the command tabs and the ribbon, you can use the displayed keys

to navigate and to execute commands and activities. There are also many keyboard shortcuts you can use to execute some of the most common commands and activities.

Browse the Ribbon with Your Keyboard

- 1 Press and release the Alt key to display the KeyTips for access to the tabs and the ribbon.
- 2 Type the letter for the tab you want. You can also type the number for any item on the Quick Access toolbar or to open the Office menu.
- 3 Type the letter or the keyboard shortcut to access the item you want on the ribbon. If a gallery or a drop-down menu appears, use the arrow keys to select the item you want, and then press Enter.



Tip

If you decide you don't want to execute an action after you've pressed the Alt key, press the Alt key a second time to return to your work.

Use Keyboard Shortcuts

- 1 Use the keyboard shortcuts shown in the table at the right to execute the action you want. Not all shortcuts are appropriate for all programs all the time.
- 2 If you want to switch from mouse methods to keyboard methods, point to the button or other item you want to work with, and note the keyboard shortcut in the ScreenTip. Then use that keyboard shortcut.
- 3 If you don't see the keyboard shortcut you want in the table or in a ScreenTip, search Help for "keyboard shortcuts."

See Also

Read "Getting Help" on pages 24–25 for information about using Office 2010's Help system.

Common Keyboard Shortcuts

Action	Keyboard Shortcut
Copy and delete (cut) selected content	Ctrl+X
Copy selected content	Ctrl+C
Paste content	Ctrl+V
Hide or minimize ribbon	Ctrl+F1
Apply/remove bold formatting	Ctrl+B
Apply/remove italic formatting	Ctrl+I
Apply/remove underline formatting	Ctrl+U
Align paragraph left	Ctrl+L
Align paragraph center	Ctrl+E
Align paragraph right	Ctrl+R
Add/remove space before paragraph	Ctrl+0 (zero)
Apply double line spacing	Ctrl+2
Apply single line spacing	Ctrl+1
Apply Normal style	Ctrl+Shift+N
Change case	Shift+F3
Undo last action	Ctrl+Z
Redo last action	Ctrl+Y
Open shortcut menu	Shift+F10
Check spelling	F7
Save document	Ctrl+S
Save As	F12
Print (show Print dialog box)	Ctrl+P
Open Help	F1

Moving and Copying Content

Office programs, and most other programs, use a tool called the *Clipboard* as a temporary holding area for content that you want to move or copy to another part of your document, to another document in the same program, or to a document in another program. You simply park your text on the Clipboard and then, when you're ready, you retrieve it and "paste" it into its new location. One of the challenges with the Clipboard is that the format of information you copy and paste can be unreliable—one time you get the right font and color for a

heading, for example, but the next time you don't necessarily get the result you wanted.

Now Office 2010 includes the Paste with Live Preview feature, which enables you to control how the information you copy is pasted into your file. Depending on the type of information you've copied—text, numbers, pictures, or objects—you are given a series of choices for the way the information is pasted. And what's more, you can preview your choice before you selected it. Nice.

Cut or Copy Information

- 1 Select the text you want to cut or copy.
- 2 Do either of the following:

Click the Cut button (or press Ctrl+X) to delete the selected text and store it on the Clipboard.

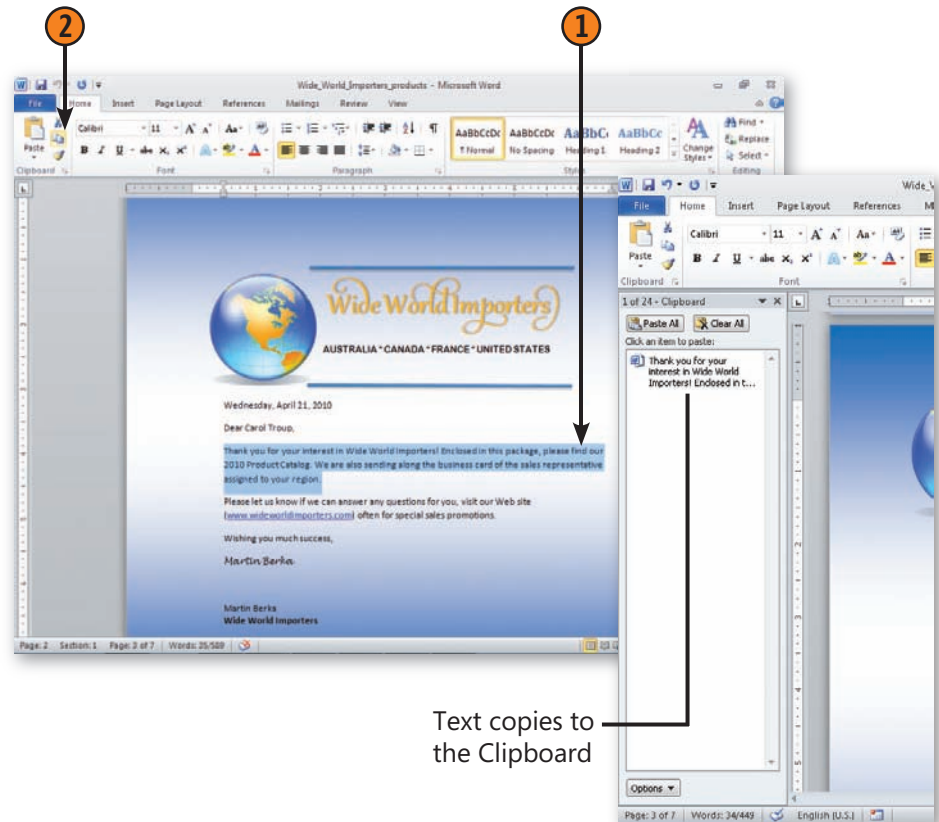
Click the Copy button (or press Ctrl+C) to keep the selected text where it is and place a copy on the Clipboard.

See Also

Read "Customizing Your Editing" on page 398 for information about modifying the default settings for the way items are cut and pasted in your document.

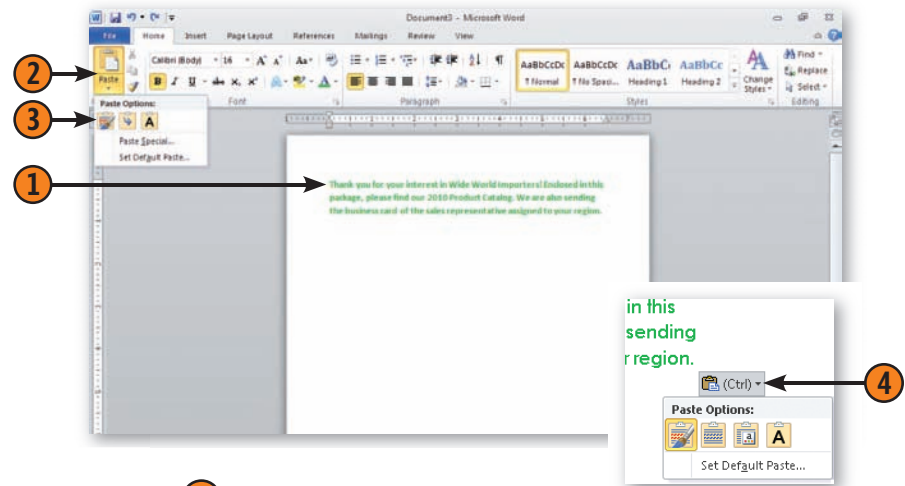
Tip

You can use the Office Clipboard to store items other than text, including pictures, tables, objects, and even data from Excel 2010 worksheets or Access 2010 data tables.



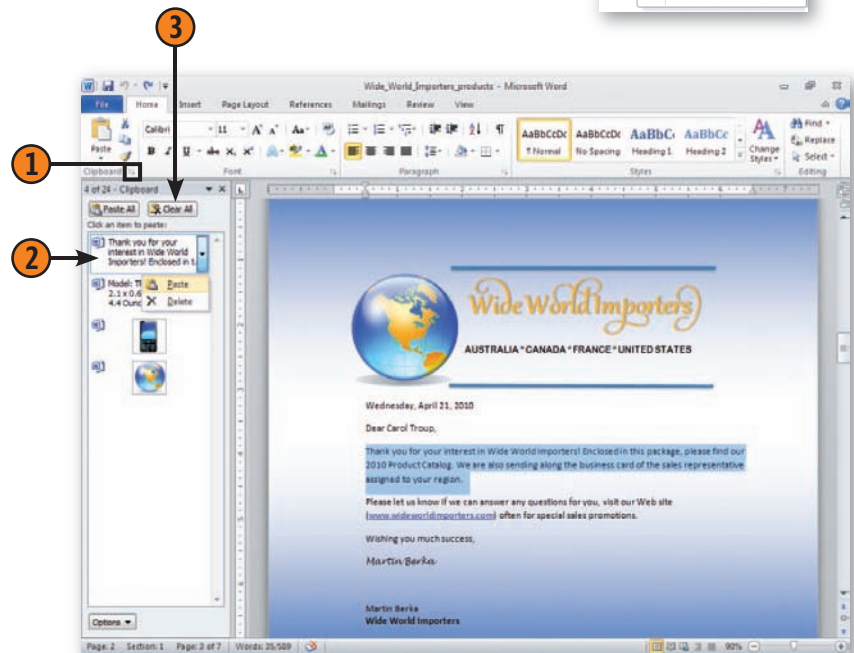
Paste Information Using Paste with Live Preview

- 1 Click in your document where you want to insert the information.
- 2 In the Clipboard group of the Home tab, click the Paste button.
- 3 Hover the cursor over each paste option to see how the information will look at the selected position. Click the option you want to apply.
- 4 You can change the format of the pasted information by clicking the Paste Options button and choosing the option you want to use.



Copy and Paste Multiple Items

- 1 Display the Clipboard by clicking the dialog box launcher in the Clipboard group on the Home tab.
- 2 Click the item to be inserted. Click Paste.
- 3 Click Clear All to empty the Clipboard.



Working with Backstage View

All the tools you need to create, save, share, and choose options for your Office 2010 files are now available in Backstage view. This convenient view presents the various commands as tabs so that you can easily find the task you want to complete and choose the options you need associated with it.

When you first click the File tab, Backstage view appears and the Info tab is displayed. This tab displays the file's

properties and authors, and gives you access to the commands you need to set permissions, prepare to save the file, and work with file versions. Other tabs in Backstage view—such as Recent, New, Print, and Save & Send—give you access to existing and new files and help you print and share the files you create. Additionally, you set program options and get Help in Backstage view.

Finding File and Program Information

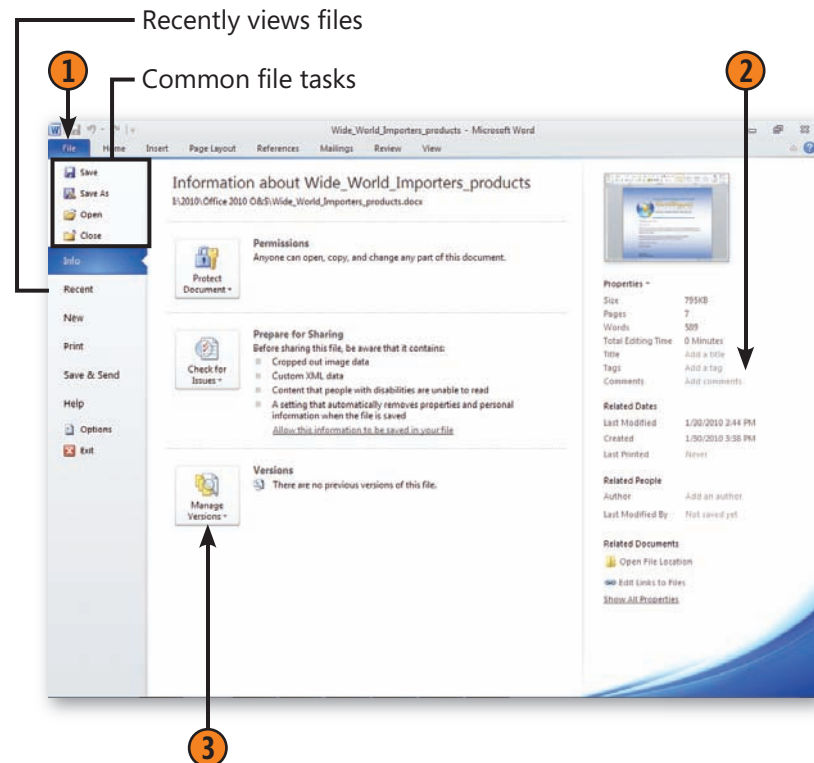
- 1 Click File to display Backstage view.
- 2 Review the file's properties.
- 3 Choose the tools you want to work with in the center of the Backstage view window.

Tip

To close Backstage view and return to your file, click the File tab a second time.

Try This!

Click Manage Versions in the Info tab of Backstage view and choose Recover Draft Versions. A dialog box opens showing unsaved versions of your file so that you can open and save the content. In this way, you can recover information that you might have accidentally forgotten to save.



Printing a File

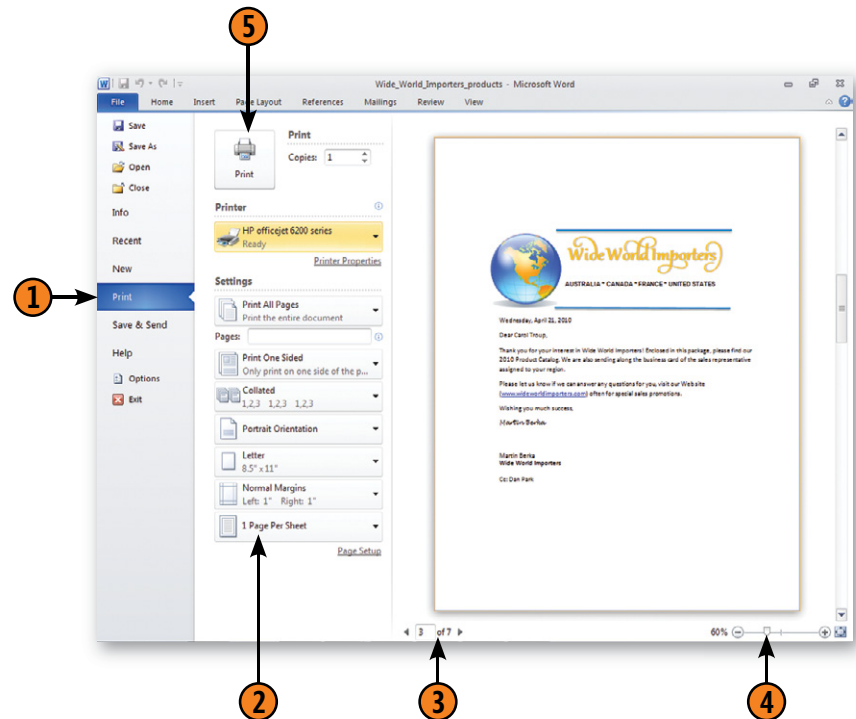
- 1 In Backstage view, click Print.
- 2 Set print options in the center of the Print window.
- 3 Preview the file by clicking the arrows near the page number at the bottom of the document preview to move through the document.
- 4 Drag the Zoom slider to change the size of the document display.
- 5 Click Print to print the file.

Tip

You can print a document directly to a OneNote 2010 notebook by clicking the Printer setting arrow and choosing Send To OneNote 2010. When the Selection Location In OneNote dialog box appears, choose the notebook and section where you want to insert the document and click OK.

Tip

The tools available in Print Settings vary from application to application.



Tip

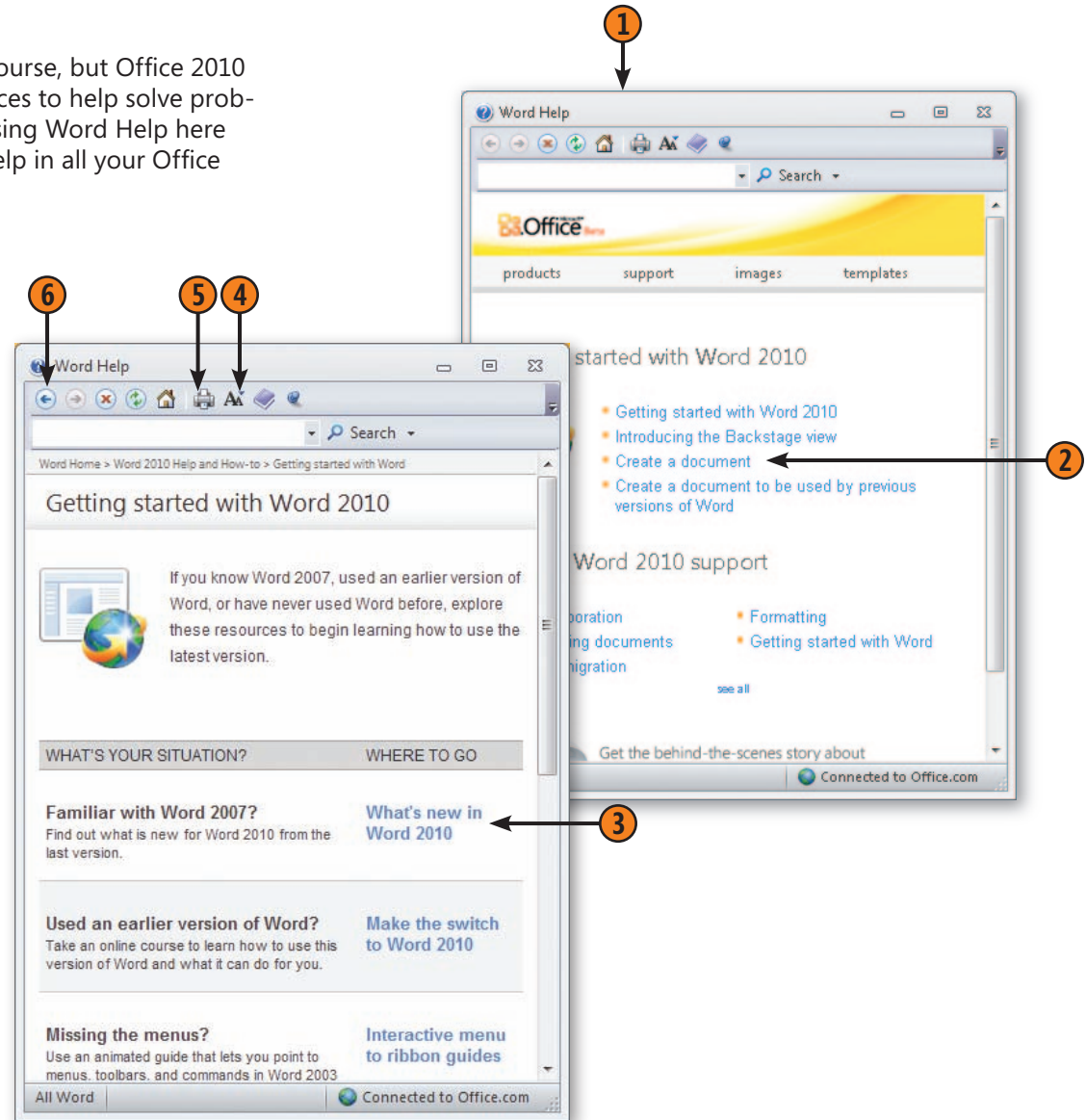
In Word, you can click the Print All Pages arrow (the first item under Settings), and choose the pages you want to print. If you want to print on both sides of the page but your printer doesn't support dual-sided printing automatically, you can do it manually by clicking Print All Pages and choosing Only Print Odd Pages. Click Print to print the pages, and then remove them from the printer, make sure they are in sequential order, and then put them back in your printer to print the even pages. Click Print All Pages again, and this time click Only Print Even Pages and click Print.

Getting Help

Nothing can replace this book, of course, but Office 2010 does provide you with other resources to help solve problems you might encounter. We're using Word Help here to illustrate the ways you can get help in all your Office programs.

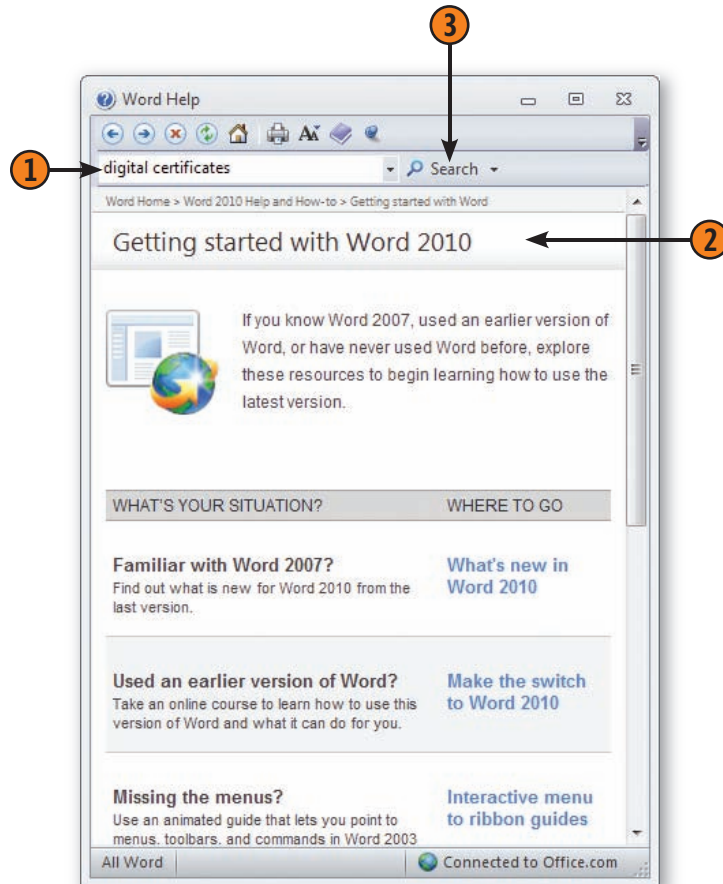
Browse for Help

- 1 In your program, press the F1 key to display the Help window for that program.
- 2 Click a category that reflects what you want to learn.
- 3 Find what you want to do, and then click the link that seems relevant to your question.
- 4 If the font size is too small or too large, click the Change Font Size button, and choose a font size from the menu.
- 5 To print the topic, click the Print button.
- 6 To return to either the list or the articles, click the Back button. To return to the list of categories, click the Back button again.

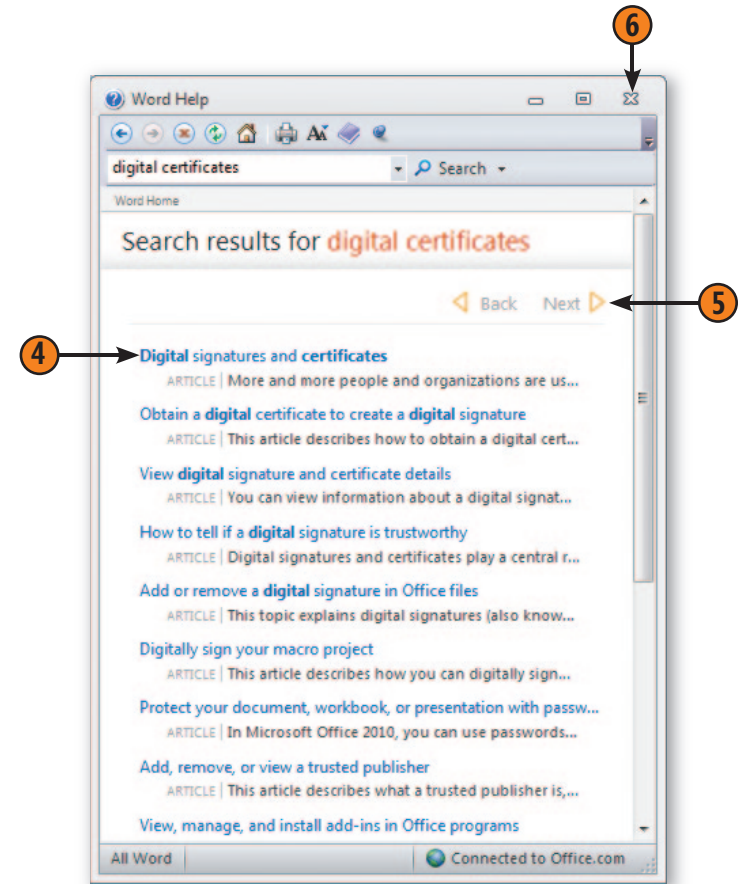


Search for Help

- 1 Type your Search text.
- 2 If you want to specify which Help resources you want, click the Search down arrow, and then click the resource.
- 3 Click Search.



- 4 Click a search result that seems relevant.
- 5 If there's more than one page of results, click the Next button at the top and bottom of the search results to see any additional pages.
- 6 Close the window when you've finished.



Office's File Formats

Beginning with Office 2007, Microsoft Word, Excel, PowerPoint, and Access saved files in a different format that was more efficient and flexible than the format used in previous versions. Some people you trade files with may be using different versions that produce files in different formats than the program you are using in Office 2010. Fortunately, you can save your Office 2010 files in earlier formats if this is a problem for you, or you can get a file converter (available from Microsoft Downloads) that enables your friends and colleagues to view and work with Office 2010 files.

If you decide not to use the latest formats available in the various Office 2010 applications, however, be aware that you won't be able to use some of the programs' very cool new features. For example, features such as video styles in PowerPoint or text effects in Word will not be available to you. Review the following descriptions of the formats used in Word, Excel, and PowerPoint to see which formats work best for you. To see the list of all available formats, choose Save As from the Office menu, and, in the Save As dialog box, scroll through the Save As Type list. To see a description of the Access file format choices, see "Open an Existing Database File" on page 367.

- **Document, Workbook, or Presentation** This is a format that was new with Office 2007 that enables all of the programs' new features. Files in this format can't be opened in earlier versions of their respective programs unless you've downloaded and installed a special translating filter program. The new format has the standard file extension with an added "x" (for example, .docx, .xlsx, .pptx).
- **Macro-Enabled Document, Workbook, or Presentation** This is the same format as the Document, Workbook, or Presentation format, except that it contains macros.

- **XML Document or Presentation** This is a plain Text file that includes all the text and the XML coding. This format is used primarily in a corporate setting where transforms are created to extract and/or reformat information that will be stored for reuse.
- **Word, Excel, or PowerPoint Template** This new form of template, first available in Office 2007, also enables the new features of the program.
- **Word, Excel, or PowerPoint Macro-Enabled Template** This is the same format as the Template format, except that it can contain macros.

Other File Formats for Office Programs

- **Word, Excel, or PowerPoint 97–2003 format** This is the binary file format used in previous versions of these programs. Although it provides compatibility with earlier versions, saving in this format disables some of the advanced features of the 2007 programs.
- **Word, Excel, or PowerPoint 97–2003 Template** This is the binary file format for templates used in previous versions of Word.
- **Single File Web Page** This format creates a Web page and stores all the graphics in the same file.
- **Web Page** This format creates a standard HTML-format Web page whose graphics are stored in a separate folder.
- **Rich Text Format** This is a binary file that contains the text and formatting information but little else. It provides compatibility with many programs.
- **Plain Text** This text file contains only the text of the document and no formatting.



6

Working with Special Content in Word

In this section:

- Numbering Headings and Lines
- Inserting a Cover Page
- Inserting Information with Additional Actions
- Inserting an Equation
- Adding a Sidebar or a Pull Quote
- Inserting a Watermark
- Creating Footnotes and Endnotes
- Inserting a Citation
- Creating a Table of Contents
- Printing an Envelope
- Printing a Mailing Label
- Mail Merge: The Power and the Pain
- Creating a Form Letter
- Finalizing Your Document

Sure, you may use Microsoft Word 2010 most often for letters, reports, newsletters, and flyers. But every once in a while, in addition to the normal, run-of-the-mill documents you create, you may need to do something special—like create a cover page for a report, add an equation to a proposal, include citations listing your references for some research you’ve done, or create a professional table of contents so readers can find their way through your document easily. Word 2010 includes a wide selection of predesigned cover pages that you can use as is or customize to better coordinate with your needs. Additionally, this section talks about inserting equations, using text boxes to create sidebars and pull quotes, and creating watermarks. If your document needs footnotes or endnotes, Word not only numbers them automatically but updates the numbers for you if you add or delete a note, and even figures out their exact placement on the page. We’ll also discuss adding citations, creating a table of contents, and finalizing your document.

And then there’s the mail merge feature—a great time-saver when you need to send the same information to a few individuals or to a large group of people. You provide a *main document* and a *data source*, and Word combines, or merges, the information into a new, personalized document or personalized e-mail messages.

Numbering Headings and Lines

When you are preparing a document that will be peer-reviewed (for example, an article for a professional journal) or distributed to a team of reviewers who will be asked to provide feedback, adding numbers to the headings and lines makes it easy for reviewers to comment on the relevant sections. You can add numbers to your Word 2010 headings by using the Multilevel List tool, and you can control line numbers of text using various tools in the Page Layout tab.

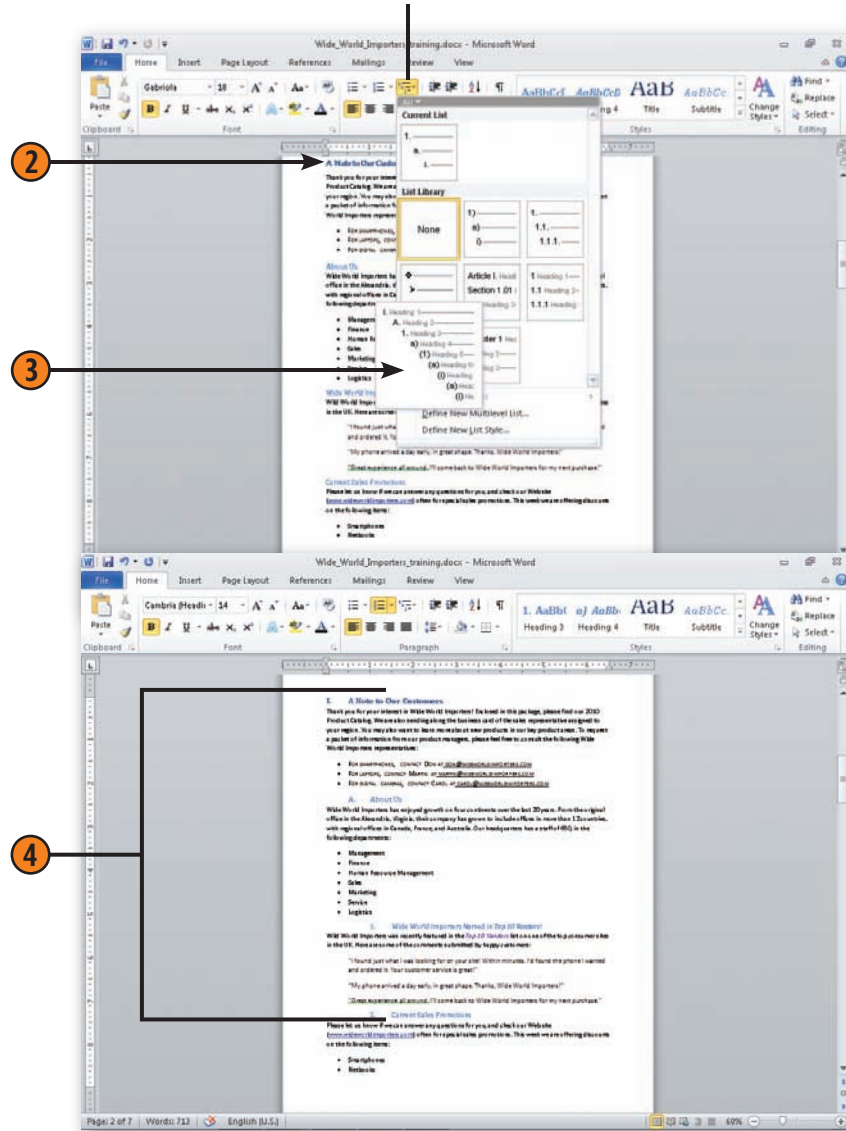
Number the Headings

- 1 Verify that you've applied the correct styles to all the headings.
- 2 Click in the first heading paragraph.
- 3 On the Home tab, click the Multilevel List button, and click one of the heading-numbering schemes.
- 4 Verify that your document headings are numbered correctly. If you don't like the look of the numbering scheme, click the Undo button on the Quick Access toolbar.

Tip ✓

If a paragraph that you want to number as a heading isn't included when you use a heading-numbering scheme, you haven't assigned it the proper outline level. To correct this problem, you can either modify the style and assign it the correct outline level, or switch to Outline view, click in the paragraph, and select the outline level on the Outlining tab.

The Multilevel List button



Number the Lines

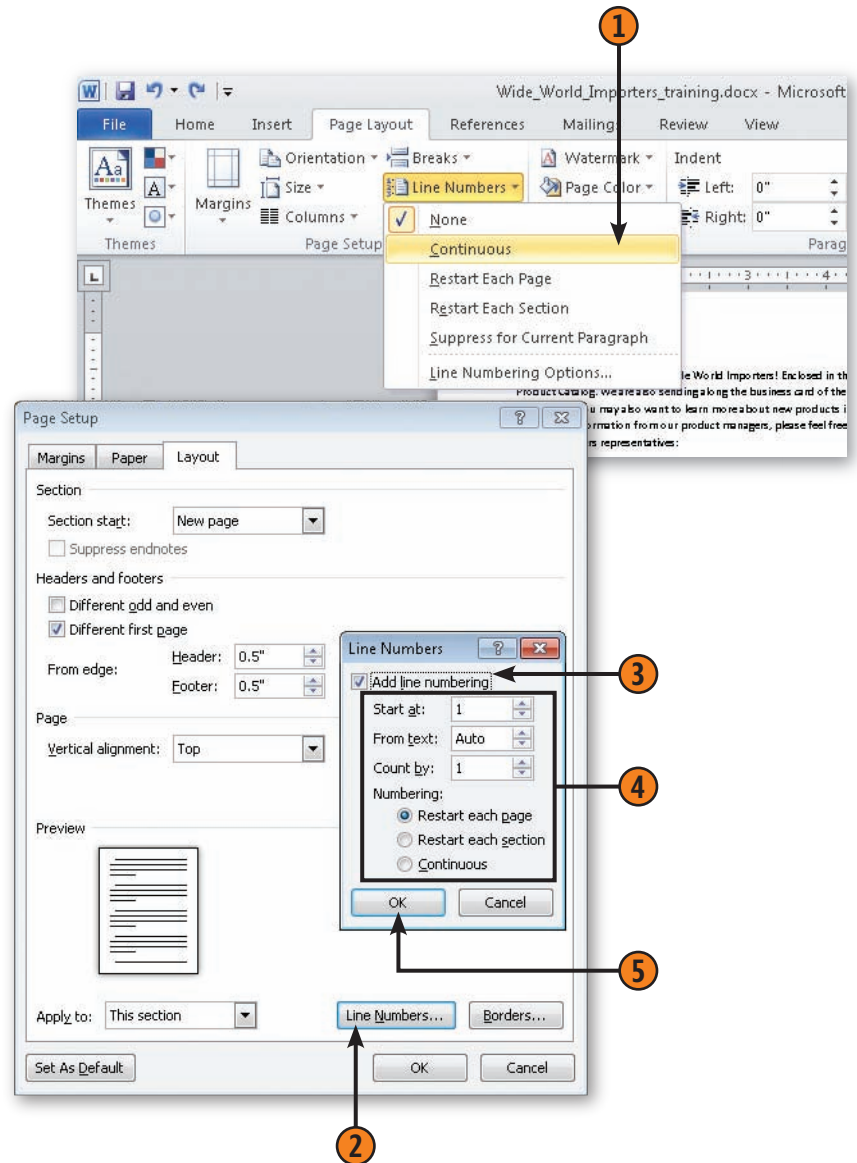
- 1 On the Page Layout tab, click the Line Numbers button, and choose the type of line numbering you want from the drop-down menu.
- 2 If you want to change the starting number or the interval at which line numbers are shown (every fifth line, for example), click Line Numbers again, choose Line Numbering Options from the menu, and, on the Layout tab of the Page Setup dialog box, click the Line Numbers button to display the Line Numbers dialog box.
- 3 Select the Add Line Numbering check box, if it isn't already selected, to turn on line numbering.
- 4 Specify the options you want.
- 5 Click OK, and then click OK in the Page Setup dialog box.

Tip

If there's a paragraph whose lines you don't want to be included in the line-numbering process, click in the paragraph, click the Line Numbers button on the Page Layout tab, and choose Suppress For Current Paragraph.

Tip

The line numbers are visible on your screen only in Page Layout view and Print Preview.



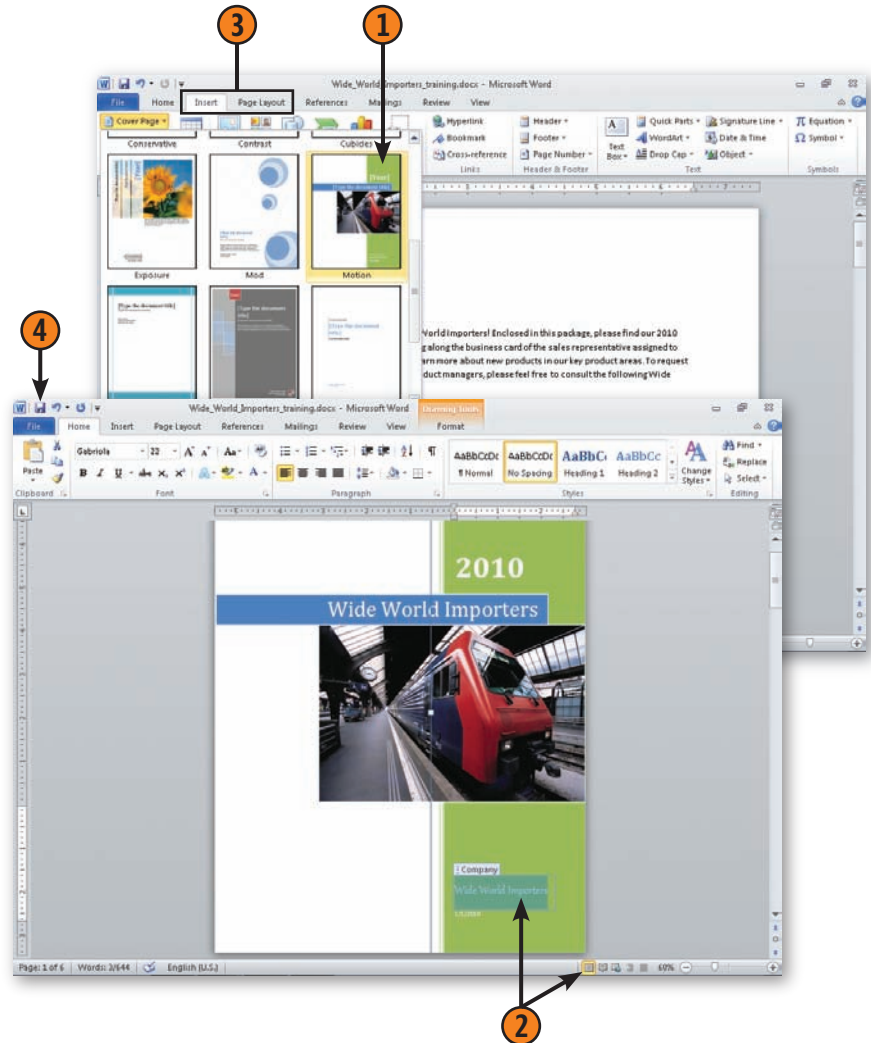
Inserting a Cover Page

When you've spent time and energy making the inside of your report look great, you may want to add a professional cover page to give the entire document a polished look. A

Insert the Cover Page

- 1 On the Insert tab, click the Cover Page button, and in the gallery that appears click the cover page you want.
- 2 Switch to Print Layout view if you aren't already in that view, press Ctrl+Home to move to the beginning of your document, click in an area that needs to be completed, and type the required information. Repeat these actions for all the other areas that need to be completed.
- 3 If you're not happy with the design of the cover page, do any of the following:
 - On the Insert tab, click Cover Page, and choose another design.
 - On the Page Layout tab, click Themes, and choose a different theme.
 - Add a picture, a drawing, fields, text, or other items to customize the page.
 - On the Insert tab, click Cover Page, and choose Remove Current Cover Page to delete the cover page.
- 4 Save your document.

well-designed cover page makes a good first impression and gives readers important information about what they'll see inside your document.

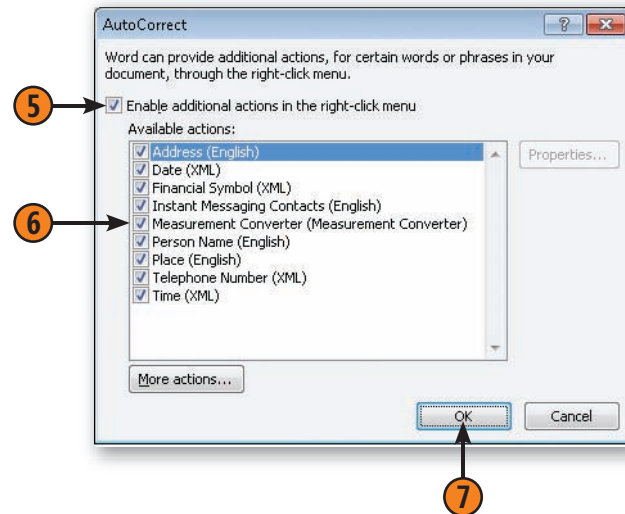
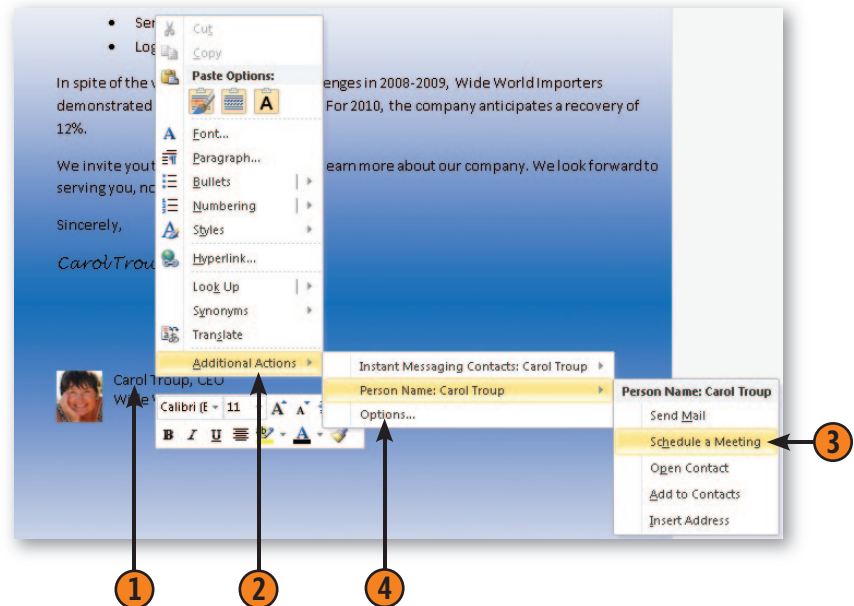


Inserting Information with Additional Actions

Word 2010 is a smart program, and it can help you do more with the information in your document by providing action items you can use to carry out specific tasks that are tied to the word or phrase. For example, suppose that you include the name of a coworker in your document. Word 2010 offers an additional action when you right-click that enables you to send an e-mail message, schedule a meeting, or display the person's contact information. When you right-click a paragraph that includes a company name. You can specify the actions you want Word 2010 to be able to take depending on the type of information it finds in your document. In versions of Word prior to Word 2010, Additional Actions were known as *smart tags*.

Contact a Colleague

- 1 Look through your document and right-click a person's name.
 - 2 In the context menu that appears, click Additional Actions.
 - 3 Click the action you want to perform.
- Or
- 4 Click Options.
 - 5 Click Enable Additional Actions In The Right-Click Menu if necessary.
 - 6 Click the check boxes of the items you want to include.
 - 7 Click OK.



Inserting an Equation

If you create documents in which you need to display accurate mathematical equations, you'll be pleased with the equation improvements in Word 2010. The enhanced tools now enable you to create sophisticated custom equations, choose and

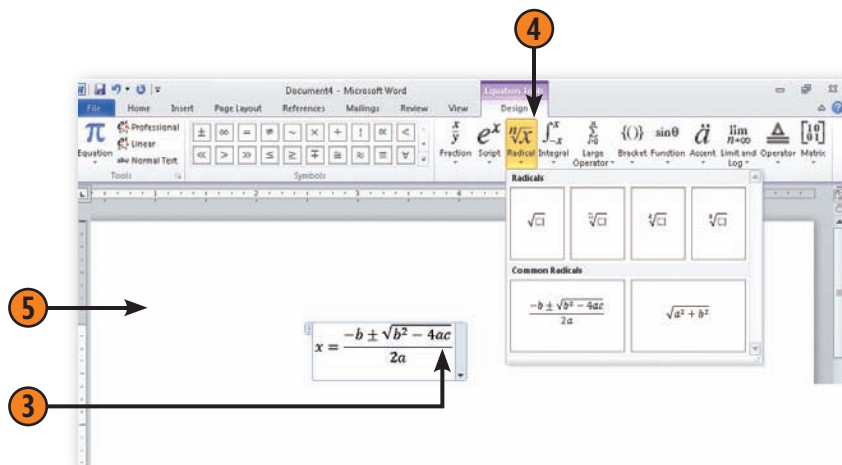
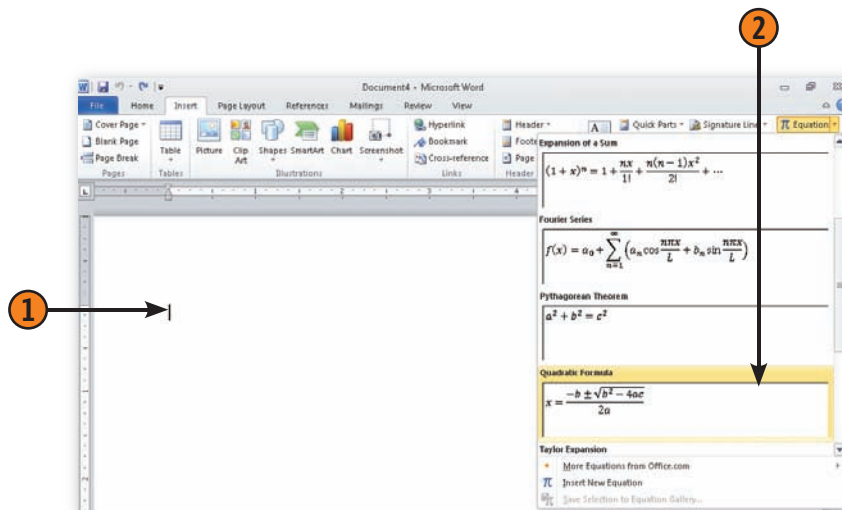
modify predefined equations, and add all the elements you need to create the equation the way you want it. What's more, you can save your equation to the Equation gallery so that it's there the next time you need it.

Insert the Equation

- 1 Click in the document where you want to insert the equation.
- 2 On the Insert tab, click the down arrow at the right of the Equation button, and in the gallery that appears click the equation you want.
- 3 Edit and format the equation as desired.

Or

- 4 Use the tools on the Equation Tools Design tab to add to the equation.
- 5 Click outside the equation when you've finished working with it.



Caution

If you add an equation to your document and then save it in Word 97-2003 format, the equation will be converted to an image and you will not be able to edit it. If you convert the document to Word 2010 format once again, however, you will be able to edit the equation.

Adding a Sidebar or a Pull Quote

When you want to add a special design element that reinforces key ideas, adds extra information, or spotlights phrases in your text, sidebars and pull quotes help you present the

text in a special way. Word 2010 offers a variety of sidebar and pull quote styles you can add for that distinctive look.

Insert a Predesigned Text Box

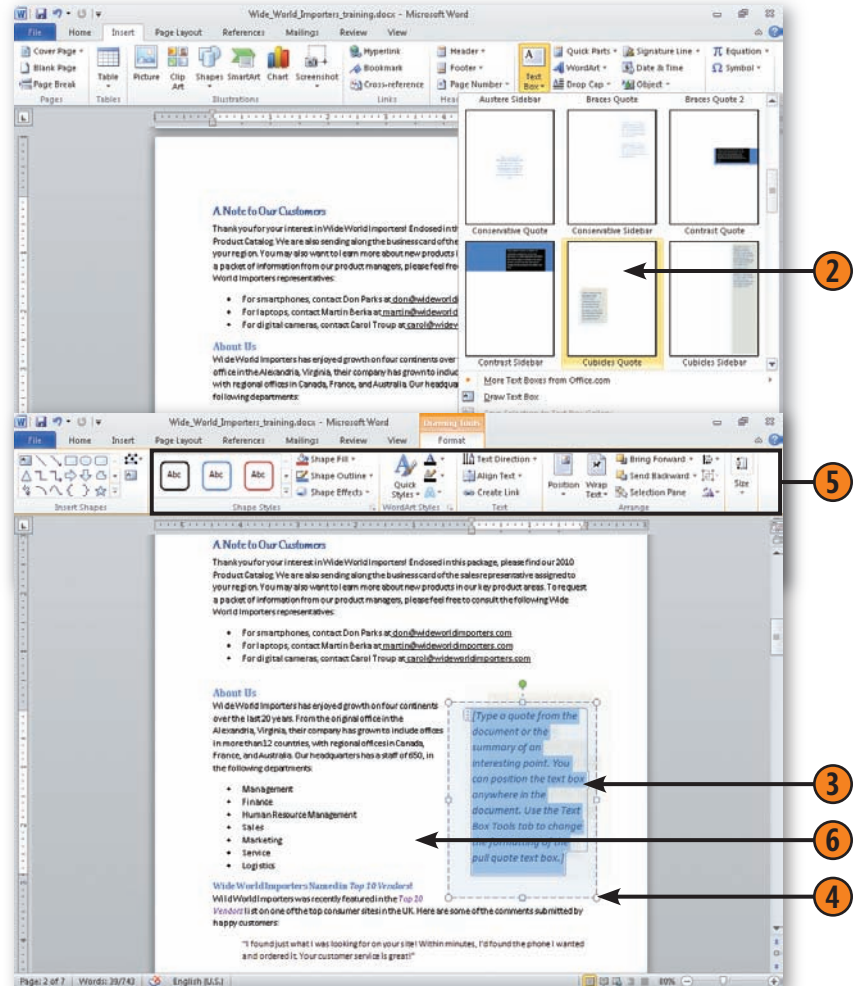
- 1 Switch to Print Layout view if you aren't already in that view.
- 2 On the Insert tab, click the Text Box button, and in the gallery that appears click the text-box design you like.
- 3 Select any sample text in the text box, and paste or type your replacement text.
- 4 Click the outer boundary of the text box, and drag it to the location you want.
- 5 Use any of the tools on the Text Box Tools Format tab to modify the text box itself, or use the formatting tools on the Home tab to modify the text.
- 6 Click outside the text box to resume working on the main content of your document.

Tip

To create your own custom text box, click Draw Text Box in the Text Box gallery, and use your mouse to drag out the dimensions of the text box.

Tip

You can change the way the text wraps around a text box you add by right-clicking the box and choosing Wrap Text from the context menu. Click the option reflecting the way you want the text to flow around the text box.



Inserting a Watermark

A *watermark* is a picture or some text (a company logo, for example) that appears subtly “behind” the main text in your document. Watermarks can help identify your document as *your* document and give readers additional information about how they can use the piece (for example, some watermarks say

“Do Not Copy.” The watermark in your Word 2010 document appears on every printed page as though it were part of the paper. You can create a picture watermark or a text watermark, but you can’t have both in the same document.

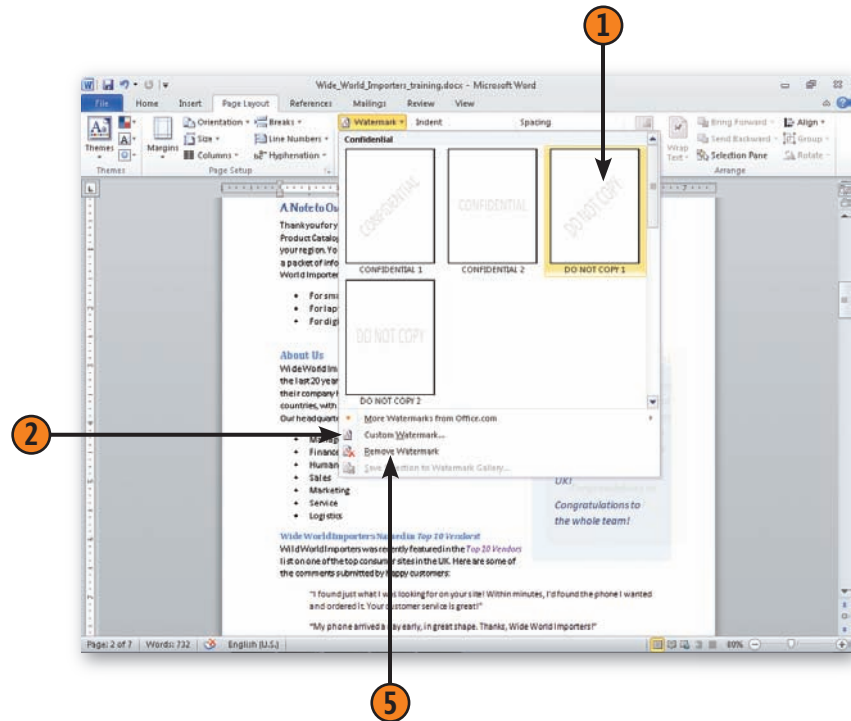
Create the Watermark

- 1 On the Page Layout tab, click the Watermark button, and choose the watermark you want from the gallery that appears.
- 2 If none of the existing watermarks is what you want, choose Custom Watermark from the gallery to display the Printed Watermark dialog box.

(continued on next page)

Tip

To have the same watermark appear automatically in every document that you create using a particular template, add the watermark in that template. To make sure a specific watermark is available for all your documents, add it to the Watermark gallery.

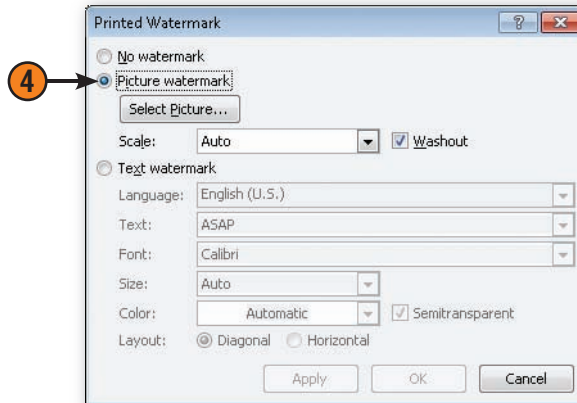
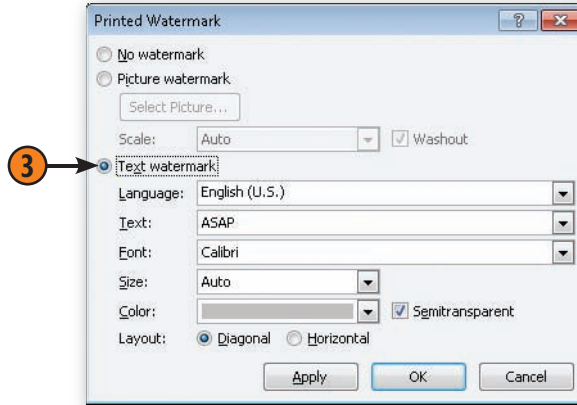


Create the Watermark *(continued)*

- 3 To create a text watermark, select Text Watermark, type the text, choose your formatting options, and click OK.
- 4 To create a picture watermark, select Picture Watermark, click the Select Picture button and locate and select the picture file you want to use, choose your formatting options, and click OK.
- 5 If you decide you don't want a watermark after all, click the Watermark button on the Page Layout tab, and choose Remove Watermark from the gallery.

Tip

The watermark appears in the Print Layout and Full Screen Reading views, and in Print Preview. It also appears, of course, in the printed document.



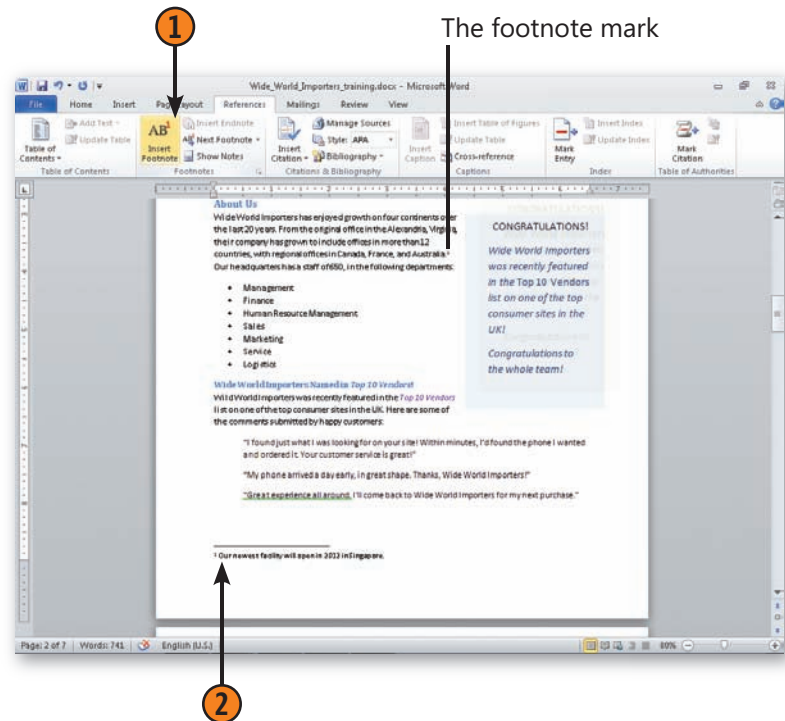
Creating Footnotes and Endnotes

If you are creating a document in which it's important to cite your references and add notes that support your text, you'll love the footnote and endnote features in Word 2010. Word automatically positions footnotes at the bottom of the page or places endnotes at the end of the document or section, whichever you specify. Word numbers both the footnotes and the

endnotes, giving each a unique numbering format. Whenever you add or delete a footnote or an endnote, Word automatically rennumbers the appropriate series. For a footnote, Word also figures out how much space is required at the bottom of the page for the footnote, and when a footnote is too long for the page Word automatically continues it on the next page.

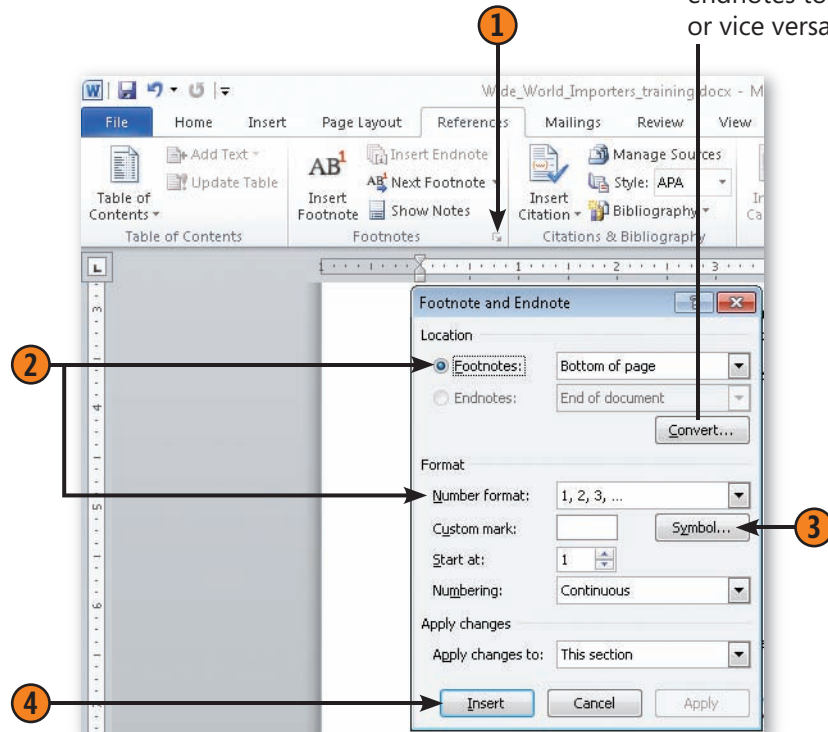
Insert the Footnote or Endnote

- 1 In Print Layout view, with the insertion point located where you want the footnote or endnote reference mark to appear in your document, click the Insert Footnote button on the References tab for a footnote or the Insert Endnote button for an endnote.
- 2 Type your footnote or endnote text.



Change the Reference Mark

- 1 On the References tab, click the Footnote & Endnote dialog launcher.
- 2 Specify where you want the footnotes or endnotes to appear, and click the numbering format you want.
- 3 Click to display the Symbol dialog box, choose a symbol for the footnote or endnote reference mark, and click OK.
- 4 Click Apply to change the location of the footnotes or endnotes and/or the number format, or click Insert to use the selected symbol as the reference mark for this footnote or endnote.



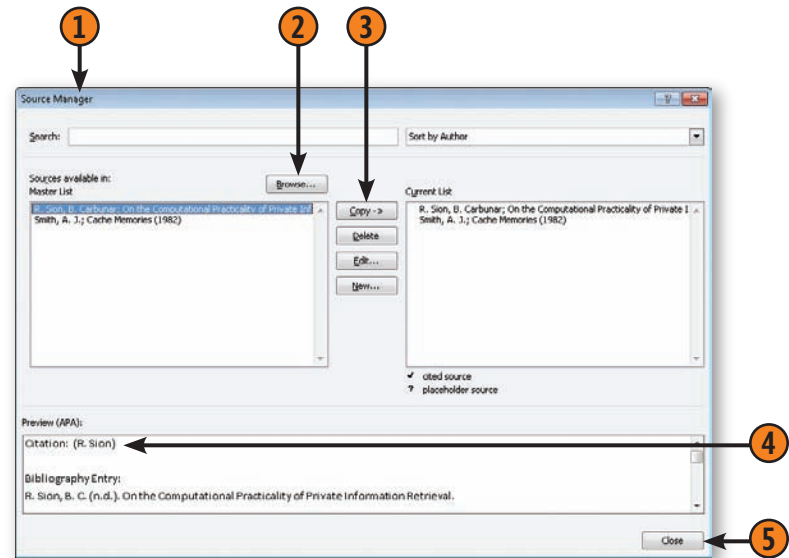
Inserting a Citation

When your writing references outside sources and/or works by other people—including books, articles, legal decisions, or other items—you'll need to cite these sources. Word provides a rich environment for entering, compiling, formatting, and inserting citations into your documents. If you're working in a company, a school, or an agency that frequently creates

documents that include citations, you probably already have the data entered in bibliographies, ready to be dropped in. If not, however, you can type the information as you go and save it for future documents. You can insert individual citations and manage the sources you use as references in your Word 2010 documents.

Add Existing Citations

- 1 On the References tab, click the Manage Sources button to display the Source Manager dialog box.
- 2 If the default source file isn't the one you want, click Browse. Use the Open Source List dialog box to locate the source file you want, and then click OK. You can use numerous source files to copy citations into your document.
- 3 If citations exist in the source document that aren't already in your document, and you'll eventually want to add them, select the citations you want, and click Copy. Use the Sort and Search tools if you need to find citations in a large source file, and add those you want to your document.
- 4 Select any citation you're not sure of to inspect the information, and then decide whether or not to add it to your document.
- 5 Click Close when you've finished.



Try This

If you need to cite a source but don't currently have the citation information, don't worry. Click in the document where you want to place the citation, click Insert Citation, and choose Add New Placeholder. When you eventually have the information, double-click the placeholder, and enter the information in the Edit Source dialog box.

Tip

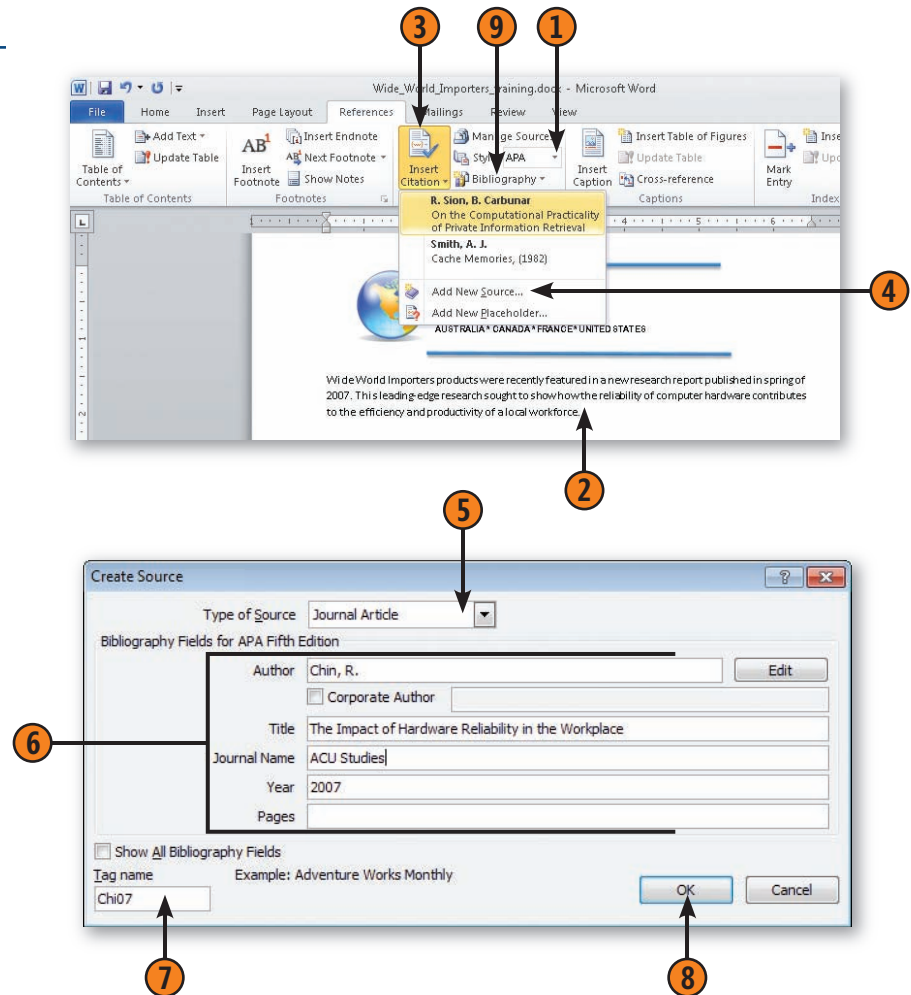
All citations are tagged as fields, and you can easily modify their styles by changing the Citations & Bibliography style on the References tab.

Insert a Citation

- 1 Select the citation style you want for all of your citations.
- 2 Click in your document where you want the citation to appear.
- 3 On the References tab, click the Insert Citation button, and if the citation you want is listed, click it.
- 4 If the citation isn't listed, click Add New Source to display the Create Source dialog box.
- 5 Select the type of citation you want.
- 6 Enter the information for the citation.
- 7 Either use the proposed citation tag name or enter a unique name.
- 8 Click OK.
- 9 If you want to insert a bibliography of your citations or a list of works cited, place the insertion point where you want the item to appear, click the Bibliography button, and click the item you want in the gallery that appears.

Tip

The citation is placed inside a *content control* in your document. To edit the citation or the source, or to convert the citation into static text, point to the content control, click the down arrow that appears, and choose what you want to do from the drop-down menu.



Tip

To edit a citation, double-click it, and change the information in the Edit Source dialog box.

Creating a Table of Contents

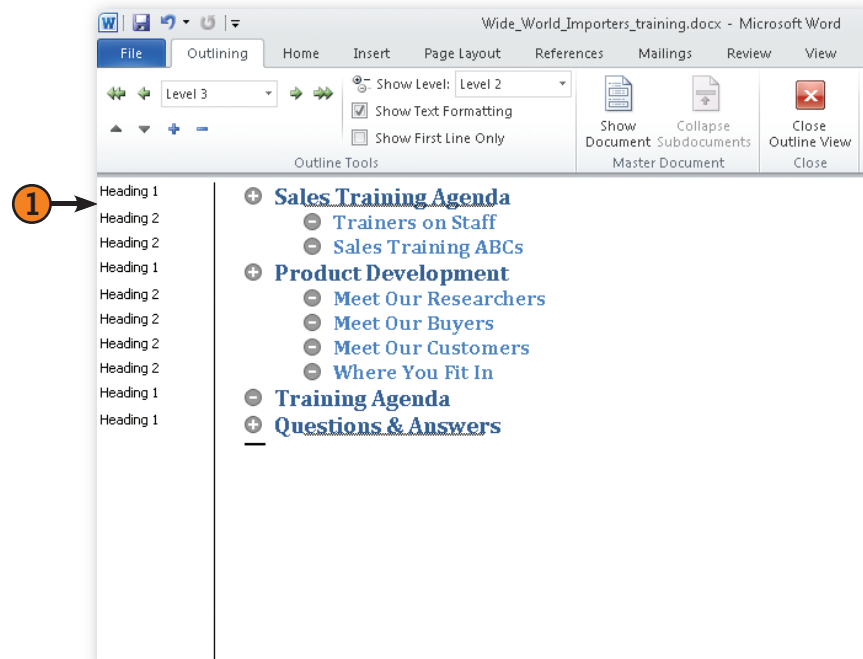
For long documents, adding a table of contents is a great reader service, making it easy for those reading your document to turn just the page they want to see. Word 2010 provides a number of predesigned tables of content so that you can choose one you'd like to use or modify it to fit your document. Word 2010 will automatically include all headings you've

styled as Heading 1, Heading 2, and so on as it compiles the table of contents. After you add the table, you can easily update it, change its style, or update only the page numbers, which enables you to make sure the table of contents is accurate if one or more headings get moved during editing.

Set the Outline Text

- 1 In Outline view, scroll through the document, verifying that any paragraph you want to appear in the table of contents has a style that uses the appropriate level 1, level 2, or level 3 outline level, and that any paragraph you don't want to include has an outline level of 4 or below or a Body Text outline level. If a paragraph you want to include doesn't have a style with the appropriate outline level assigned to it, click in the paragraph and apply the appropriate style.

(continued on next page)



Set the Outline Text *(continued)*

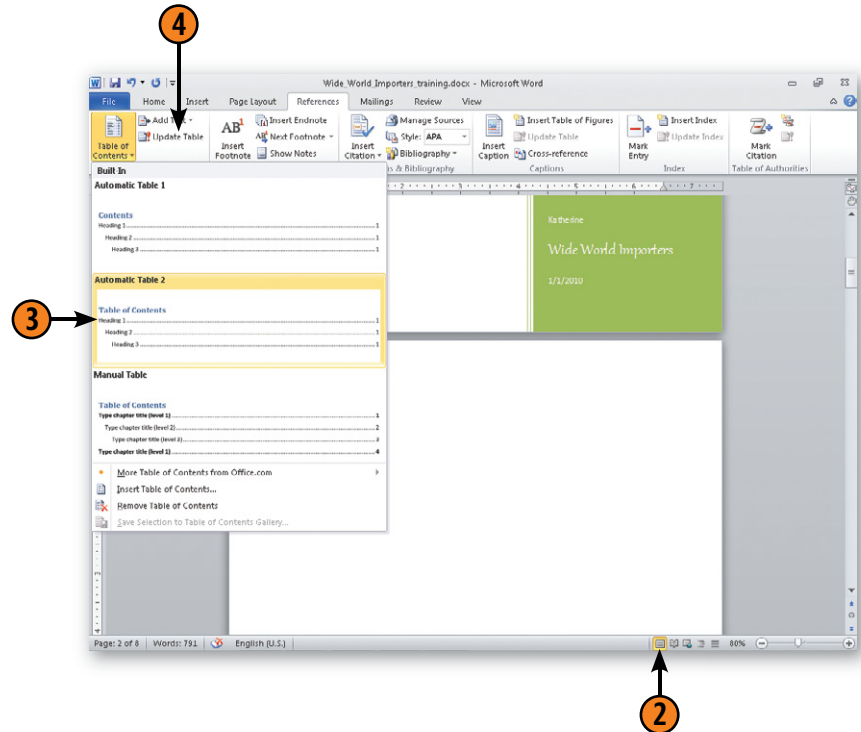
- 2 Switch to Print Layout view, and click in the document where you want the table of contents to appear.
- 3 On the References tab, click the Table Of Contents button, and select the style and type of table of contents you want to insert.
- 4 If you make changes to the document that affect the pagination or the heading content, click the Update Table button on the References tab.

Tip

If you want to include or exclude a paragraph but don't want to change its style, click the Add Text button on the References tab, and click the outline level you want to apply.

Tip

After you've added the table of contents to your document, you can update it easily by clicking the table and pressing F9. Word helps you keep the table of contents up to date so that the page numbers and headings are correct, even after you've added text, moved sections around in the document, or edited the headings in the file.



Printing an Envelope

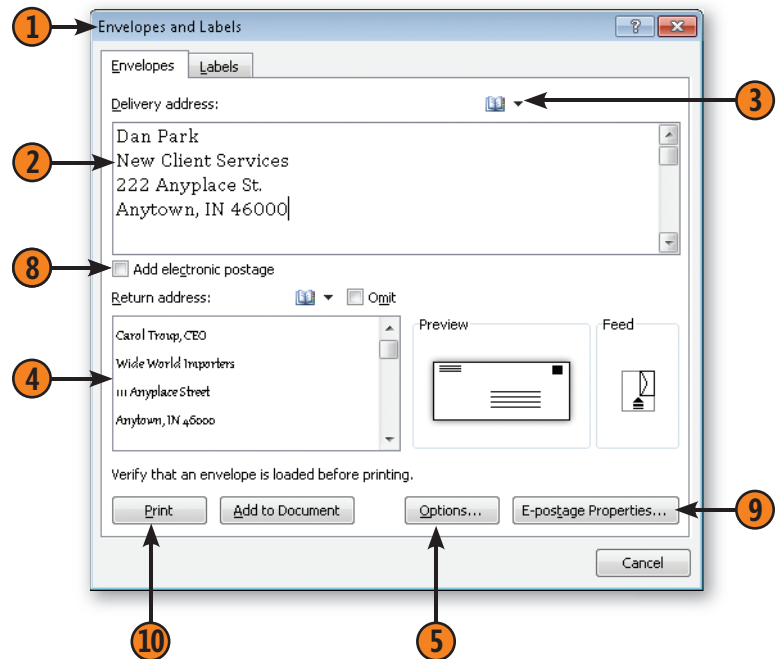
Sometimes a printed envelope conveys just the look and feel you're looking for when you send a document. Suppose, for example, that you've just created a great proposal that you want to deliver to a top client. Creating a printed envelope in the same font and style as the proposal helps your work look consistent and professional. With Word, you can easily create

crisp, businesslike printed envelopes. You can add your return address, and, in the United States, you can add electronic postage. If you already have the mailing address in your letter, Word usually detects it and copies it to the Envelopes And Labels dialog box. You can also type the address directly in the dialog box.

Add the Address

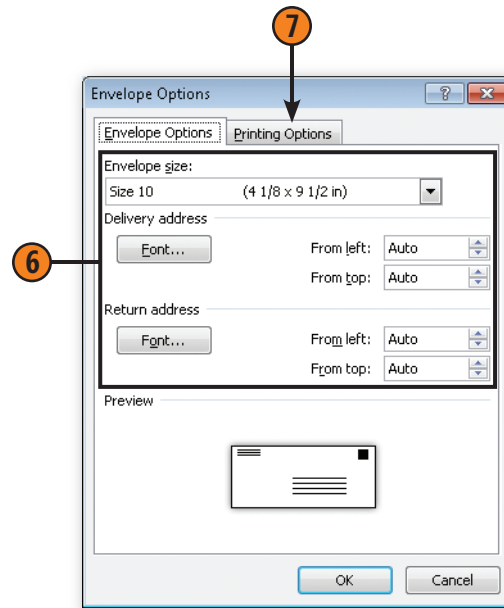
- 1 On the Mailings tab, click the Envelopes button to display the Envelopes And Labels dialog box.
- 2 If a delivery address is displayed on the Envelopes tab, verify that it's correct.
- 3 If no delivery address is shown, or if you want to use a different address, type the address. If the address is in your Microsoft Outlook Contacts list, click the Insert Address button.
- 4 Verify that the return address is correct. If you're using an envelope with a preprinted return address, select the Omit check box so that the return address won't be printed.
- 5 Click Options to display the Envelope Options dialog box.

(continued on next page)



Add the Address *(continued)*

- 6 On the Envelope Options tab, specify the envelope size and the fonts and positions for the addresses.
- 7 On the Printing Options tab, specify how the envelope is to be loaded and printed. Click OK.
- 8 If you have electronic postage (e-postage) software installed, select this check box to use electronic postage.
- 9 If you need to make changes to your e-postage setup, click the E-Postage Properties button.
- 10 Click Print to print the envelope.

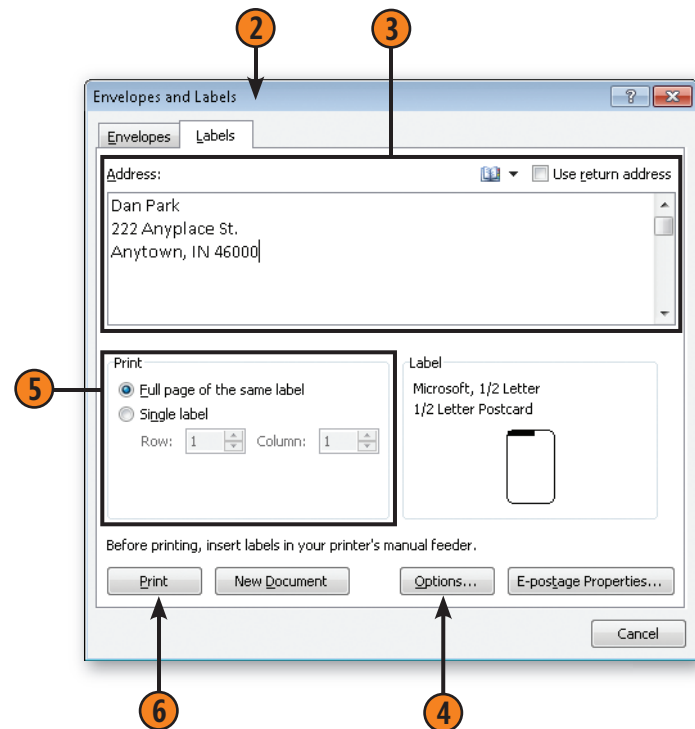


Printing a Mailing Label

Printing mailing labels is much easier than it used to be. Today you can purchase labels at almost any office supply store and find that you can easily print what you need—one label or sheets of labels—in Word 2010. You choose your label type, enter the address, and select how you want the label to be printed, and Word does the rest. Nice.

Print the Label

- 1 Make a note of the manufacturer and the design number of the labels you'll be using. If you're planning to print only one label, figure out which label on the sheet of labels is the one you're going to use. Later in the process, you'll need to specify the label by row (the horizontal line of labels) and by column (the vertical line of labels). Insert the sheet of labels into your printer (usually into the manual feed tray, if there is one).
- 2 On the Mailings tab, click the Labels button to display the Envelopes And Labels dialog box.
- 3 On the Labels tab of the Envelopes And Labels dialog box, use the proposed address, type a new one, or click the Insert Address button to insert an address from your Outlook Contacts list. To insert your return address, select the Use Return Address check box.
- 4 If the type of label shown isn't the one you're using, click Options to display the Label Options dialog box, specify the label you're using, and click OK.
- 5 If you're using a full sheet of labels, click the appropriate option to print a whole page of identical labels or only one label on the sheet of labels. If you want to print only one label, specify the label by row and column.
- 6 Click Print to print the label or labels.



Tip

If you need to print a large number of different mailing labels, consider using the mail merge feature.

See Also

Read “Managing Your Contacts” on pages 296–297 for information about adding or modifying address information in your Outlook Contacts list. Read “Changing Your User Information” on page 399 for information about modifying your return address.

Mail Merge: The Power and the Pain

If you've ever had to send the same letter or catalog to more than one person, you know what a time-saver mail merge can be. Mail merge saves you the trouble of typing numerous names and addresses by merging your contacts list with the document you're creating. In Word 2010, mail merge uses a *master document* and a *data source* to accomplish the task. The master document is the template (although not a template in the Word-document sense) that lays out your document and contains text or other items that never change. This might be the sales letter, for example, that you want to send out to all your customers. The master document also contains instructions for inserting data from a data source into each document. The *data source* is your contact list, Microsoft Excel 2010 spreadsheet data, or other file containing the name and address information you want to merge with the document.

The goal of mail merge is simple: to produce many different documents that are personalized to go to many different individuals—without a lot of extra work from you. The process of putting together a mail merge document may seem a bit complicated at first, but it's really just a matter of telling Word where to substitute the different data items. (For example, the *name* goes here, and the *address* goes there.) Once you use the mail merge feature a time or two, it will seem intuitive. After you master the basic mail merge process, you can get a little fancier by adding conditional expressions, which enable you to create a mail merge letter for a customer if a certain condition is true.

It's More than Letters

The mail merge feature can do more than create form letters and address envelopes. You can save the merged documents as a file so that you can edit them or send them by e-mail. You can create almost any type of document by using a specific template or designing the document from scratch. All Word

needs is a data document with some data fields in it. You can create mailing labels and address books, awards, parts lists, different versions of exams, and catalogs designed for specific geographical areas or demographic populations. The uses for mail merge are limited only by your creativity, your willingness to experiment with different data fields and Word fields, and your decision as to whether mail merge would be faster than manually creating individual documents.

Tip



There's one change for Microsoft Works users who plan to use their Works database as the data source for a Word 2010 mail merge. Now you need to export your data and then create a new data source before importing the information into Word. Word 2010 no longer directly imports Works databases.

Setting Conditional Content

Mail merge offers you a flexible way to produce content based on what your customers want to see. You can easily tailor the content according to the data stored in your mailing list. For example, you might offer one promotion to individuals who live in the western region, but offer a different promotion to those who live in the southern U.S. If you have an entry in your data file that tracks the region in which the customer lives, you can use that data to control the content of your document. To add this kind of conditional content, you use the IF field, available in the Rules tool in the Mailings tab. You can tell Word to insert one set of content IF the contact lives in the western region, or insert a different set of content IF the contact lives in the southern region.

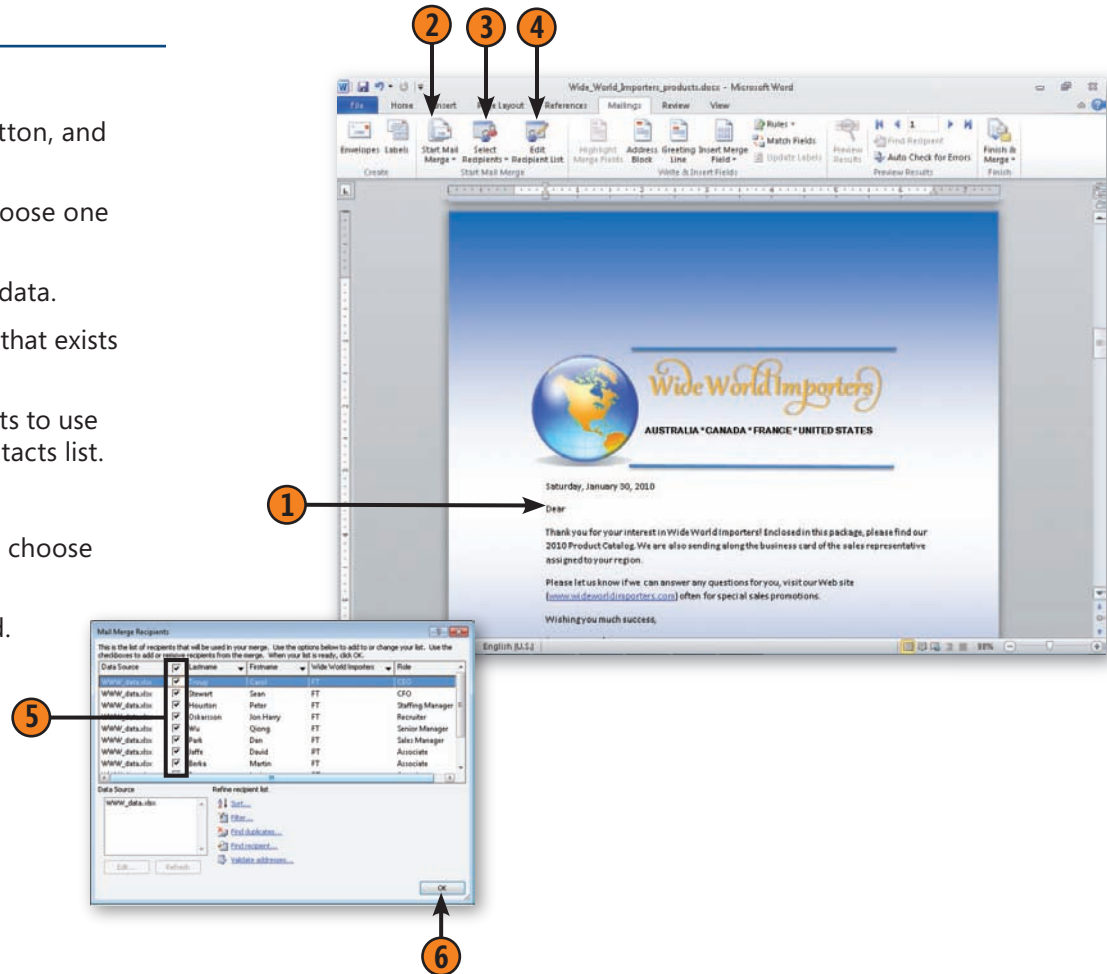
Creating a Form Letter

If the idea of creating a form letter sends a shudder of apprehension down your spine, relax; it's no more difficult than writing a simple note to a coworker. Once you create the letter,

you can customize it by adding the mail merge fields you want—and then it's just a few short steps to the final merge process.

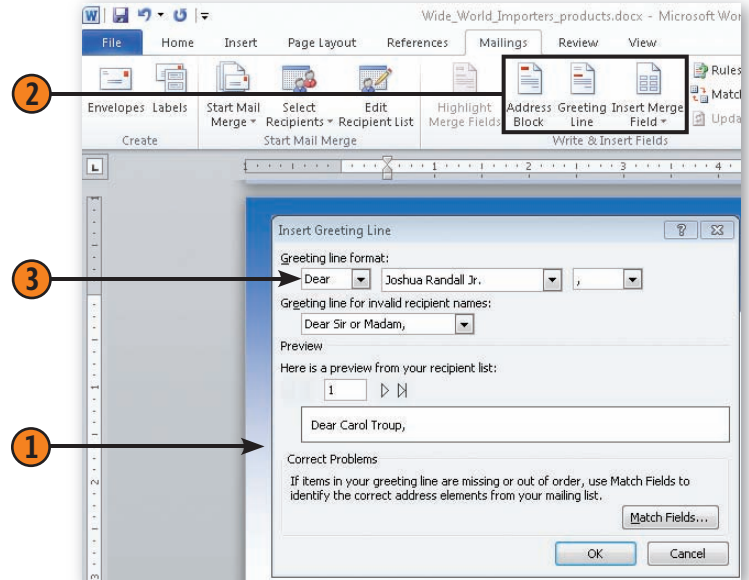
Set Up Your Letter

- 1 Create and save your letter.
- 2 Click the Start Mail Merge button, and choose Letters.
- 3 Click Select Recipients and choose one of the following:
 - Type New List to enter your data.
 - Use Existing List to use data that exists in a file Word can read.
 - Select From Outlook Contacts to use data from your Outlook Contacts list.
- 4 Click Edit Recipient List.
- 5 Select or clear check boxes to choose recipients.
- 6 Click OK when you've finished.



Specify the Data to Be Merged

- 1 In your document, click where you want to add information from your data source.
- 2 In the Write & Insert Fields group, click the type of information you want to insert.
- 3 In the dialog box that appears, specify the options you want, and then click OK. Continue adding items to the letter.
- 4 Click Preview Results.
- 5 Click to preview the letters.
- 6 Click Edit Recipient List to make changes to the data list.
- 7 Click Auto Check For Errors.
- 8 Click Finish.



Tip



If you're familiar with conducting a mail merge using the Mail Merge Wizard that steps you through the process, and if you want to use the wizard, click the Start Mail Merge button, and choose Step By Step Mail Merge Wizard from the drop-down list.

Finalizing Your Document

Word 2010 includes a Document Inspector that helps you assess your document before you send it to ensure that you aren't including any sensitive information—personal or

business—that should stay inside the company. Additionally, the Document Inspector can help you prepare the file for distribution and ensure that it isn't edited against your wishes.

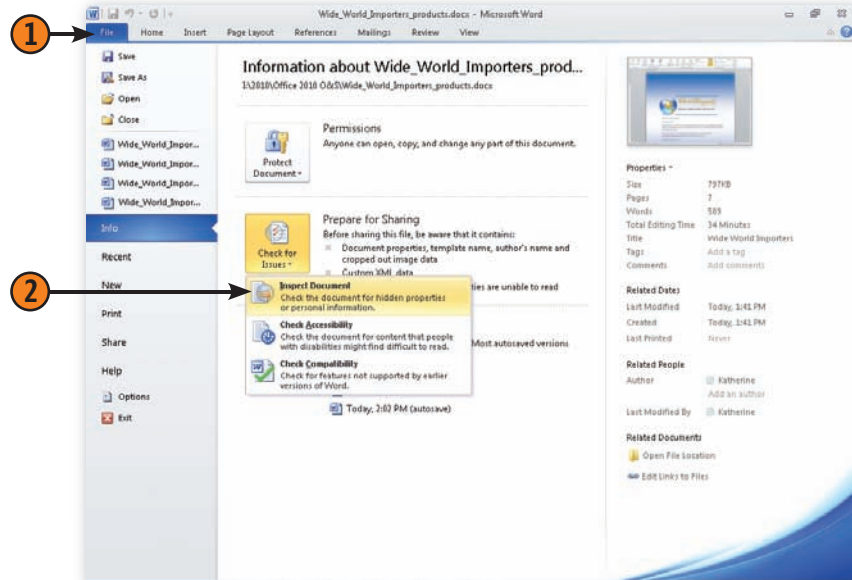
Prepare Your Document

- 1 With your document completed and saved, click the File tab.
- 2 In Backstage view, in the Prepare For Sharing area, click Check For Issues.

(continued on next page)

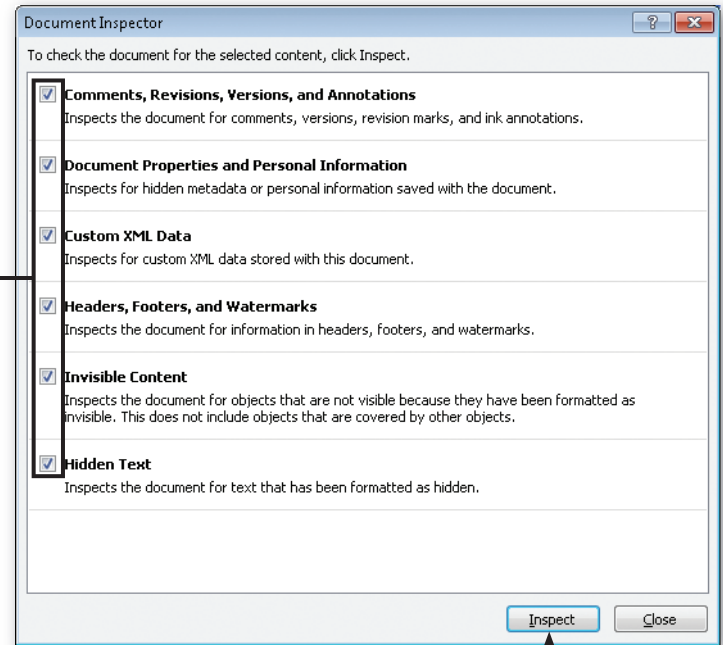
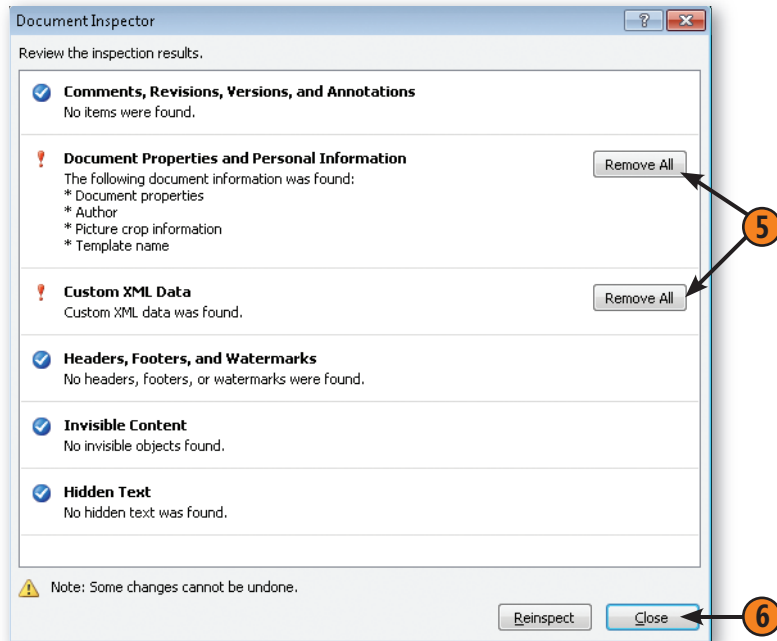
Tip

If you don't want other people who have access to your document to edit it, click File, click Protect Document in the Permissions area, and click Mark As Final.



Prepare Your Document *(continued)*

- 3 In the Document Inspector dialog box, clear the check boxes for the items you want to keep in the document and select the check boxes for the items you don't want to appear in the document.
- 4 Click the Inspect button at the bottom of the dialog box.
- 5 In the Document Inspector dialog box, click the Remove All button for each type of item you want to remove.
- 6 Click Close when you've finished.



Tip

To edit a document that has been marked as Final, choose Mark As Final again from the Prepare submenu.

See Also

Read "Password Protecting a File" on page 409 for information about using additional security settings to prevent changes to your document.

Index

Symbols

- * (asterisk)
 - in calculations, 180, 182
 - file names and, 26
- \ (backslash), 26
- ^ (caret), 182
- = (equal sign), 180
- / (forward slash)
 - in calculations, 180, 182
 - in file names, 26
- > (greater than), 26
- < (less than), 26
- (minus sign), 182
- () (parentheses), 182
- % (percent sign), 182
- + (plus sign), 26, 182
- | (vertical bar), 26

A

- absolute cell references, 180, 188
- Access. *See also* databases
 - Access window, 360–361
 - analyzing data, 388–389
 - compatibility issues, 30
 - database basics, 362–363
 - Datasheet view, 361
 - exporting data, 376–377
 - fields and records, 363, 368–372
 - Form Wizard, 380
 - forms, 380–382
 - importing data, 374–375
 - Navigation Form, 380, 381–382
 - other file formats and, 367
 - overview, 5, 359–362

- PivotCharts, 388–389
- queries, 386–387
- Query Wizard, 386–387
- Quick Start fields, 369
- Report view, 361–362
- Report Wizard, 382
- reports, 382–385
- storing data, 362–363
- table relationships, 363, 378–380
- tables, 368–369
- templates, 364–366
- using existing databases, 366–367
- views in, 360–362

actions

- action items in Word, 125
- Actions buttons in PowerPoint, 229
- Actions group in Outlook, 346–355
- additional actions in Word, 125
- assigning to slides, 229
- keyboard shortcuts for, 19
- order of, 182
- redoing, 19
- shortcut menus and, 16
- undoing, 19
- Actions group in Outlook, 346–355
- ActiveX controls, 416–417
- add-ins, 416–417
- addition, 182
- address books, 264, 285
- addressing
 - e-mail messages, 264, 295, 297
 - envelopes, 136–137
- aligning objects, 311
 - in Publisher, 324–326
- aligning text
 - in Excel cells, 162
 - keyboard shortcut for, 19
 - in PowerPoint slides, 215

- in Publisher, 321, 324
- in Word
 - converting text to tables for, 100
 - hyphenation and, 103
 - Linked Styles and, 82
 - setting alignment, 88
 - tables, 102
- alphabetical sorting
 - in Excel, 192
 - in Word lists, 119
 - in Word tables, 118
- animation
 - in charts, 227
 - customizing, 228
 - running in presentations, 250
 - saving files and, 255
 - setting effects, 226–227
 - of slide elements, 226–227
 - triggering, 208–227
- Animation Painter feature, 227
- Animation Trigger feature, 227
- annotating presentation slides, 251
- appointments
 - adding detail to, 286–287
 - recurring appointments, 287
 - reminders for, 287
 - setting up, 286
- arithmetic operators
 - defined, 182
 - for formulas, 180
 - order of precedence for, 182
- Artistic Effects feature, 36
- asterisk (*)
 - in calculations, 180, 182
 - file names and, 26
- attendees, for meetings, 294–295
- audio
 - assigning actions and, 229

audio, *continued*
audio notes in OneNote, 348–349
presentation narration, 240–241
in presentations, 232–233
in slide transitions, 228, 234
in slides, 232–233
AutoCorrect feature (Word), 71–72
automatic hyphenation (Word), 103
AutoRecover options, 413
averaging a series of calculations, 185

B

backgrounds
in Excel charts, 203
formatting in slides, 212–213
in publications, 311, 322
removing in pictures, 39
styles for slides, 211
backing up files, 413
backslash (\), 26
Backstage view
file and program information, 22
layout and features, 22
overview, 5
printing files from, 23
baselines, in Publisher, 324–325
bold formatting, 19
bound documents, 107
boundaries, object, 324–325
broadcasting presentations, 258–259
browsing for help, 24
Building Blocks feature, 323
bulleted lists (Word)
creating, 96
formatting, 97
styles for, 82
business cards (Outlook)
adding fields to, 302
creating, 302
customizing look of, 285

e-mailing, 302–303
business information (Publisher), 310, 332

C

calculations. *See also* formulas; functions
cell values, 182–183
order of precedence in, 182
series of, 188
summing data, 181, 184–185
Calendar view, 288
calendars (Outlook)
adding appointment detail, 286–287
controlling access to, 293
overview, 285
publishing to Web, 290
setting up appointments, 286–287
sharing, 290–292
sharing available times, 291
caret (^), 182
case, changing, 19
cell addresses. *See* cell references
cell references
absolute, 180, 188
in arguments, 187
in calculating values, 183
copying cell content and, 177
defined, 147
determining, 177
in formulas, 180
names instead of, 177
old style of, 177
in printing, 180. *See also* print areas
R1C1 reference style, 177
in ranges, 177
relative, 180, 188
cell values, 147
cells
conditional formatting, 174–176
defined, 147
deleting content, 159
formatting, 154–155, 162–164
naming ranges of cells, 147
selecting, 154
centered text (Word), 88
changing user information, 399
character styles, 82
in Publisher, 316–317
in Word, 82, 84
charts (Access)
animation in, 227
PivotCharts, 388–389
charts (Excel)
backgrounds in, 203
combining, 206
creating, 202
customizing, 206
data series charts, 206
formatting, 204–205
layouts, 203
line types in, 203
overview, 147, 201–202
PivotCharts, 197
styles, 204
themes, 204–205
3-D effects in, 176–203
types of, 201
citations of sources, 132–133
citing references in Word, 130–131
citing sources in Word, 132–133
clip art
clip art audio, in slides, 232–233
finding and inserting, 40
Clipboard, 20–21, 372
co-authoring
contacting co-authors, 77
editing conflicts and, 76
SharePoint Server and, 6
SharePoint Workspace and, 76
Windows Live and, 76
Word documents, 76
instant messaging and, 77
file changes and, 77

- color
 - applying to OneNote notebook sections, 343
 - color ranges in cell formatting, 175
 - in pictures, 36–37
 - Window's color schemes, 396–397
 - in WordArt objects, 47
 - of worksheet tabs, 164
 - columns (Access). *See* fields
 - columns (Excel)
 - adding, 158
 - deleting, 159
 - freezing, 200
 - hiding, 160
 - repeating, 168–169
 - revealing hidden, 160
 - separating data into, 194
 - setting width, 162
 - columns (Word)
 - adding to tables, 101
 - changing number of, 112–113
 - deleting from tables, 101
 - flowing text into, 112–113
 - Columns Wizard (Excel), 194
 - commands, displaying lists of, 15
 - comments
 - in Excel, 170–172
 - in PowerPoint, 247
 - in Word, 62
 - comparing Word documents, 79–80
 - compatibility
 - Compatibility Checker, 417
 - Compatibility mode, 30
 - Compatibility pack and, 30
 - with earlier Office versions, 27, 31
 - Rich Text format and, 27
 - SmartArt Diagrams and, 31
 - Compatibility Checker, 417
 - Compatibility mode, 30
 - Compatibility pack, 30
 - computer viruses, 273
 - conditional content, mail merge, 139
 - conditional formatting
 - color ranges for cells, 175
 - creating rules for, 176
 - customizing, 176
 - data bars, 175
 - defined, 147
 - highlighting specific cells, 174
 - icon sets, 175
 - overview, 174
 - removing, 176
 - reports, 385
 - Conflict task pane (Word), 76
 - conflicts, in co-authored files, 76
 - contact information (Publisher), 310, 332
 - Contact window (Outlook), 297
 - contacts
 - addressing envelopes and, 136
 - business cards, 285, 302–303
 - business information, 310, 332
 - contacting colleagues, 125
 - Contacts folder, 285
 - e-mail address books, 264
 - mail merging data from, 139, 140
 - mailing labels and, 138
 - Contacts folder, 285. *See also* Outlook
 - content controls, 133
 - contextual spelling errors, 70–71
 - contextual tabs, 12
 - contrast, in pictures, 36–37
 - Conversation view, 267
 - converting text to tables (Word), 100
 - copying
 - Access data, 373
 - appointments to OneNote, 355
 - blind carbon copy (Bcc), 265
 - to Clipboard, 20
 - data in worksheets, 156
 - e-mail messages, 277
 - Excel data, 156, 157, 177
 - formatting (Word), 95
 - keyboard shortcut for, 19
 - sparklines, 178
 - tables from other databases, 374–375
 - Word text, 65
 - copying, multiple items, 21
 - copying and pasting, multiple items, 21
 - cover pages (Word), 124
 - cropping, pictures, 34–35
 - Cropping handles, 34–35
 - customizing Office 2010
 - destination folders, 402–403
 - editing settings, 398–399
 - file formats, 402–403
 - Quick Access toolbar, 394–395
 - Ribbon, 392–394
 - spelling and grammar checkers, 400
 - spelling dictionaries, 401–402
 - user information, 399
 - work area, 396–397
 - cutting
 - Clipboard options for, 20
 - Excel data, 156, 157
 - keyboard shortcut for, 19
- ## D
- dark fonts, 86
 - data analysis, 148
 - data bars, 175
 - data labels, 147
 - data series, 161
 - data series charts, 206
 - data sources, mail merge, 139
 - databases. *See also* Access
 - adding data to tables, 372–373
 - analyzing data, 388–389
 - basic concepts, 362–363
 - calculated fields, 370
 - conditional formatting, in reports, 385
 - copying and pasting data, 373
 - copying tables from other databases, 374–375
 - defined, 359

- databases, *continued*
 - deleting data, 372
 - exporting data, 376–377
 - fields and records, 368–372
 - adding, 369–370, 371–372
 - creating by typing, 368
 - defined, 363
 - naming and renaming, 368, 370
 - Quick Start, 369
 - removing, 371–372
 - re-ordering, 371–372
 - formatting data, 370
 - formatting reports, using themes, 384
 - forms
 - creating using Form Wizard, 380
 - navigation, 381–382
 - simple, 380
 - importing data, 374–375
 - opening existing, 366, 367
 - PivotCharts, 388–389
 - queries, 386–387
 - reports, 382
 - selecting data, 372
 - setting data type, 370
 - storing data in, 362–363
 - table relationships, 378–380
 - tables, 368–369
 - templates, creating from, 364–366
 - undoing operations, 372
- Date Navigator feature, 288
- dates and times
 - inserting, 45
 - meetings, 294–295
- deleting
 - columns (Excel), 159
 - e-mail messages, 277
 - Excel worksheet content, 159
 - Excel worksheets, 165
 - fields in databases, 371–372
 - narration from slides, 240–241
 - records in databases, 371–372
 - rows and columns (Word tables), 101

- RSS feeds, 281
 - sparklines, 179
- Design Checker (Publisher), 333–334
- destination folders, 402–403
- dialog box launchers, 14
- dialog boxes, 17
- dictionaries, 401–402
- digital certificates. *See* digital signatures
- digital IDs. *See* digital signatures
- digital signatures, 411, 414–415
- direct formatting, 82
- display settings, work area, 397
- division, 182
- Document Inspector, 142
- documents. *See also* files
 - compatibility and, 30–31
 - converting to 2010 format, 30–31
 - digitally signing, 415
 - file formats for, 27
 - finalizing in Word, 142–143
 - preparing for review in Word, 122–123
 - reorganizing in Word, 120
- double-line spacing, 19
- double-sided documents (Word)
 - mirror indents in, 92
 - setting up, 106
- double-sided printing
 - in Publisher, 337
 - Word page layout and, 104
- Draft view (Word), 61
- drawing
 - custom Word text boxes, 127
 - in OneNote, 346–347, 348
 - shapes, 43

E

- Edit Wrap Points feature, 117
- editing settings, customizing, 398–399
- effects
 - animation in slides, 226–228

- embossed text, 317
- engraved text, 317
- outlined text characters, 317
 - in pictures, 36, 38
 - shadows, 317
 - in shapes, 44
 - in slide transition, 234
- 3-D effects, 38, 44, 176–203
- WordArt, 46–47
- e-mail messages. *See also* Outlook
 - addressing, 264, 297
 - attaching files, 272
 - attachments, opening, 272, 273
 - blind carbon copy (Bcc), 265
 - copying messages, 277
 - deleting, 277
 - display options, 266, 267
 - folders and, 277
 - formatting options, 262, 263, 274–275
 - forwarding, 269
 - HTML format, 274
 - hyperlinks in, 274
 - insert tab, using, 263
 - instant messaging and, 265
 - locating, 266
 - managing with Quick Steps, 276–277
 - marking and unmarking, 277
 - message text, 265
 - message window overview, 262–263
 - moving, 277
 - opening, 267
 - receiving and reading, 266–267
 - replying to, 268
 - replying to and deleting using Quick Steps, 276
 - Rich Text format in, 274
 - sending, 264–265
 - sending pictures, 263
 - signatures, 278–279
 - spam and, 264
 - subject lines, 264, 265

- themes in, 274
- using contact information from, 296
- e-mailing publications, 336–337
- embossed text, 317
- emphasis, formatting for, 94
- encrypted passwords, 409
- endnotes, 130–131
- engraved text, 317
- envelopes, 136–137. *See also* mail merge
- equal sign (=), 180
- equation tool (OneNote), 348
- equations
 - in OneNote, 348
 - in Word, 67, 126
- error bars, in charts, 203
- Excel. *See also* workbooks; worksheets
 - AutoSum feature, 184–185
 - calculating values, 182–183
 - calculations, 186–187
 - charts, 201–206
 - Columns Wizard, 194
 - comments in, 170–172
 - conditional formatting, 147, 174–176
 - file formats for, 27
 - filtering data, 193
 - formatting features, 154–155
 - formulas, 180, 189–190
 - freezing columns and rows, 200
 - functions, 181–182, 186–187
 - importing data, 150
 - navigating worksheets, 151
 - organizing worksheets in, 164–166
 - overview, 3–4
 - PivotCharts, 197
 - PivotTables, 196–197, 198–199
 - preparing to print in, 166–168
 - printing in, 168–170
 - saving workbooks, 150
 - selecting entire worksheets, 162
 - separating data into columns, 194
 - series of calculations, 185–188
 - slicers, 198–199

- sorting data, 192
- sparklines, 147, 178–179
- summing data, 184–185
- tables, 190–191
- templates, 148
- terms used in, 147
- themes, applying to worksheets, 149
- window layout, 146–147
- workbook templates, 148
- worksheet layout, 147
- Excel Web App, 172
- exponentiation, 182
- exporting Access data, 376–377

F

- Fast Search feature, 349
- fields, 363
- file block behaviors, 407
- file formats
 - Access, other formats and, 367
 - binary, 27
 - compatibility and, 27
 - for Excel workbooks, 27
 - macro-enabled, 27
 - Office, 27
 - for pictures, 33
 - Plain Text format, 27
 - for PowerPoint presentations, 27
 - Rich Text format, 27
 - setting default formats, 402–403
 - for Word documents, 27
- file names, 26
- file permissions, 410–411
- file protection levels, 410–411
- file validation, 407
- files. *See also* documents
 - backing up automatically, 413
 - recovering unsaved, 412
- Fill handles, 157, 161
- finalizing documents, 142–143

- Find and Replace feature, 67–69
- first line indents, 92
- flowing text. *See also* wrapping text
 - into columns in Word, 112–113
 - in Publisher, 314–315
- fonts (Word)
 - applying stylistic sets, 87
 - changing, 86
 - linked styles and, 82
 - styles for, 82
- footers. *See* headers and footers
- footnotes in Word, 130–131
- foreign key fields, 378
- form letters, 140–141. *See also* mail merge
- Form Wizard (Access), 380
- formatting (Access)
 - data, 370–371
 - export formats, 376–377
 - reports, 384–385
- formatting (Excel)
 - cell data, 154–155
 - cell dimensions, 162–164
 - charts, 204–205
 - color ranges for cells, 175
 - conditional formatting, 147
 - creating rules for, 176
 - customizing, 176
 - data bars, 175
 - highlighting specific cells, 174
 - icon sets, 175
 - numbers, 155
 - overview, 174
 - predefined formats, 154
 - removing, 176
- formatting (PowerPoint)
 - slide background, 212–213
 - slide content, 215
- formatting (Word)
 - columns, 112–113
 - copying, 95
 - direct formatting, 82
 - fonts, 86–87

formatting (Word), *continued*
formatting marks, 56, 57
graphics, wrapping text around,
116–117
headers and footers, 108–109, 115
hyphenation, 103
indenting, 92
line spacing, 89–91
lists, 96–97, 119
Outline view, 120
page layout, 104–107
paragraphs, 88–92
pictures, wrapping text around, 116–117
section breaks, 110, 114
sorting information, 118–119
with styles, 82–83, 84–85
tables, 98–102, 118
tabs for, 93
text, 94–95
themes, 82, 83
viewing options, 80
formatting e-mail messages, 274
text formatting options, 262, 275
formatting restrictions, 410–411
formatting shapes, 44
forms, in Access, 380–382
formulas. *See also* calculations; functions
arithmetic operators for, 180
cell references in, 180
functions in, 181–182
troubleshooting, 189–190
forward slash (/)
in calculations, 180, 182
in file names, 26
Freeze Panes tool, 200
Full Screen reading view (Word), 60
functions. *See also* calculations; formulas
arguments in, 187
defined, 181
order of precedence in, 182
selecting and using, 186
series of, 188

G

galleries, 14
grammar
correcting, 71
grammar checker settings, 400
graphics, wrapping text around (Word), 116–117
grid guides, in Publisher, 324–325
gridlines, in Excel, 166, 203
groups, Outlook, 292–293
gutters, 105, 106–107

H

handles
Cropping, 34–35
Fill, 157, 161
Rotation, 37
Sizing, 35, 43, 47
Handout Master view, 209, 220
handouts, presentation, 249
hanging indents, 92
header rows in Word tables, 118
headers and footers
changing, 115
creating, 108–109
dates and times in, 45
help, opening, 19
Help function, 24–25
hiding or minimizing Ribbon, 19
HTML file formats, 27
hyperlinks, in e-mail messages, 274
hyphenation (Word), 103

I

icon sets, 175
importing
Access data, 374–375
Excel data, 150

indenting, 92
InfoPath (Designer and Filler), 11
Ink To Math feature (OneNote), 348
inking
in OneNote, 346–347
in presentation slides, 251
insert tab
in message window, 263
in Ribbon, 12
inserting
blank lines into notes, 301
citations of sources, 132–133
clip art, 40
comments into presentations, 247
cover pages (Word), 124
dates and times, 45
equations in Word, 126
files into tasks, 300
footnotes and endnotes, 130–131
page numbers (Word), 74–75
pictures, 32
into tasks, 300
into e-mail messages, 263
into publications, 318
screenshots, 42
shapes, 43
sidebars and pullquotes, 127
SmartArt diagrams, 48–49
SmartArt feature into slides, 214
sound in PowerPoint, 232–233
tables into slides, 222–223
tabs in Word table cells, 98
watermarks, 128–129
WordArt objects, 46
worksheets, 165
instant messaging, 77, 265
italic formatting, 19

J

justified text (Word), 88, 103

K

- kerning, 316
- keyboard shortcuts
 - common, 19
 - for line spacing/paragraph spacing, 91
 - for navigating through presentations, 250
 - Ribbon and, 18
 - Screen Tip feature for, 19

L

- landscape orientation, 105
- languages
 - Office 2010 Language Preferences, 11
 - selecting for translating text, 50
- leading (spacing), 89
- left-aligned text (Word), 88
- ligature styles, 317
- line spacing (Word), 89–91
- Linked Notes feature, 352–353
- Linked styles, 82
- list styles, 82
- lists (Word)
 - creating, 96
 - formatting, 97
 - sorting data in, 119
 - styles for, 82
- logical tests, 183

M

- macro-enabled file formats, 27
- macros
 - macro-enabled file formats, 27
 - macro-enabled templates, 27
 - security and, 416–417
- mail merge
 - conditional content in, 139

- data sources, 139
- form letters and, 140
- mailing labels and, 138
- master documents, 139
 - overview, 139
 - specifying data to be merged, 141
- Mail Merge Wizard (Word), 141
- mailing labels, 138. *See also* mail merge
- Manage Sources feature, 132
- Manage Versions feature, 22
- margins
 - guides for in Publisher, 324–325
 - setting in Excel, 166
 - setting in Word, 105
- marking and reviewing changes in Word, 78–79
- master documents, mail merge, 139
- master pages, 322
- meetings, 294–295
- Microsoft Access. *See* Access
- Microsoft Clip Organizer, 11
- Microsoft Excel. *See* Excel
- Microsoft Office. *See* Office 2010
- Microsoft Office 2010 Language Preferences, 11
- Microsoft Office Access. *See* Access
- Microsoft Office Communicator, 77
- Microsoft Office Excel. *See* Excel
- Microsoft Office Home and Business, 10
- Microsoft Office InfoPath (Designer and Filler), 11
- Microsoft Office OneNote. *See* OneNote
- Microsoft Office Outlook. *See* Outlook
- Microsoft Office Picture Manager, 11
- Microsoft Office PowerPoint. *See* PowerPoint
- Microsoft Office Professional, 10
- Microsoft Office Professional Plus, 10
- Microsoft Office Publisher. *See* Publisher
- Microsoft Office SharePoint Workspace, 11
- Microsoft Office Tools, 11
- Microsoft Office Upload Center, 11
- Microsoft Office Word. *See* Word

- Microsoft OneNote. *See* OneNote
- Microsoft Outlook. *See* Outlook
- Microsoft PowerPoint. *See* PowerPoint
- Microsoft Publisher. *See* Publisher
- Microsoft SharePoint Workspace, 6
- Microsoft Word. *See* Word
- Mini Translator, 50–51
- minus sign (-), 182
- mirror indents, 92
- Move group in Outlook, 346–355
- moving
 - to Clipboard, 20
 - e-mail messages, 277
 - Excel data, 156
 - to previous cell in Word tables, 98
 - tables in Publisher, 321
 - Word text, 65
- multiplication, 182
- multisection documents (Word), 74–75

N

- naming
 - cell references, 177
 - database fields, 368, 370
 - files, 26
 - Outlook tasks, 298–299
 - ranges of cells, 147
 - worksheets, 164
- narration, 240–241
- navigating, in Word, 66–67
- Navigation Form (Access), 381–382
- negation, 182
- network projectors, 239
- normal styles, 19
- notebooks, 342–350. *See also* OneNote
 - blank pages in, 345
 - creating, 342
 - default templates, 345
 - filing unfiled notes, 357
 - section groups, 343–346

notebooks, *continued*
sections, 343
sharing, 342, 350
subpages, 345
templates, pages from, 344–345
typing notes in, 345–350
viewing, 346

notes

Linked Notes, 352–353
OneNote and. *See* OneNote
in Outlook, 301
speaker notes, in PowerPoint, 244–245
viewing, in PowerPoint, 209

Notes Master view, 209

Notes Page view (PowerPoint), 209

numbered lists (Word)

creating, 96
formatting, 97
inserting unnumbered paragraphs in, 97
styles for, 82

numbering

endnotes and footnotes, 130–131
headings, 122
lines, 123
pages, 74–75
slides, 218

numerical sorting

in Excel, 192
in Word lists, 119
in Word tables, 118



objects

aligning on page, 324–325
layering, 326–327
overview, 307–308
positioning on page, 325
repeating, 322
stacking and grouping, 326–327
text boxes, 312–313

WordArt objects, 47
wrapping text around, 328–329

Office 2010

customizing. *See* customizing Office 2010
new features in, 5–6
overview, 2–5
programs, 11
securing. *See* securing Office 2010
versions of, 10

Office 2010 Language Preferences, 11

Office Access. *See* Access

Office Excel. *See* Excel

Office Home and Business, 10

Office InfoPath (Designer and Filler), 11

Office Mobile, 6, 172

Office OneNote. *See* OneNote

Office Outlook. *See* Outlook

Office Picture Manager, 11

Office PowerPoint. *See* PowerPoint

Office Professional, 10

Office Professional Plus, 10

Office Publisher. *See* Publisher

Office SharePoint Workspace, 11

Office Tools, 11

Office Upload Center, 11

Office Web Apps, 6

Office Word. *See* Word

OneNote

audio notes, 348–349
basic features, 341–342
drawing in, 346–347, 348
inking in, 346–347
notebooks in. *See* notebooks
overview, 5, 339
printing files to, 23
remote access of, 355
saving Outlook data to, 354–355
Search feature, 349
shapes, adding, 347
sharing notebooks in, 342, 350
sharing notes, 352–353
side notes, 356

storing notebooks online, 355
unfiled notes, 357
using Web content with, 350–351
video clips to, 349
window layout, 340–341
working with equations in, 348

OneNote Web App feature, 355

open fonts, 86

order of precedence, arithmetic
operators, 182

orientation, page

in Excel, 166
in Word, 105, 110–111

Outline view (Word), 61, 120

outlined text characters, 317

Outlook. *See also* e-mail messages

accounts, 264
appointment management, 286–287
Calendar folder, 285
calendar sharing, 290–292
contact business cards, 302–303
contact management, 296–297
Contacts folder, 285
Conversation view, 267
copying appointments to OneNote, 355
creating signatures, 278–279
e-mail accounts, 267, 282
e-mail address books, 264
e-mail attachments, 272–273
e-mail folders, 277
e-mail message window overview,
262–263
formatting e-mail messages, 274–275
forwarding e-mail, 269
group schedules, 292–293
instant messaging, 265
LinkedIn and contact information, 297
managing messages, 276–277
managing messages with Quick Steps,
276–277
meetings, scheduling, 294–295
notes feature, 301

- overview, 4, 261, 283–284
- receiving and reading e-mail, 266–267
- replying to e-mail, 268
- RSS feeds and, 280–281
- schedule tracking, 288–289
- sending e-mail, 264–265
- sending task and contact information to OneNote, 355
- sharing messages with OneNote, 354–355
- social media sites and, 270–271
- task management, 298–300
- viewing contacts, 285

Outlook Social Connector

- adding sites to, 270
- overview, 270
- viewing social contacts, 271

P

- page design (Word), 82
- page layout (Word), 104–107
- page numbers (Word), 74–75
- page orientation
 - in Excel, 166
 - in Word, 105, 110–111
- paragraph marks, 56, 57
- paragraph spacing, 19
- paragraph styles, 82
- paragraphs, 88–92
 - alignment of, 88
 - indenting, 92
 - line spacing, 89–91
 - linked styles and, 82
 - styles for, 82, 84
- parentheses [()], 182
- password protecting files, 409
- Paste with Live Preview feature, 20, 21, 156
- pasting
 - Access data, 373
 - Excel data, 156, 157

- keyboard shortcut for, 19
- using Paste with Live Preview feature, 21

pasting, multiple items, 21

percent sign (%), 182

percentages, 182

permissions

- calendar (Outlook), 293
- file, 410–411
- restricting, 411

photo albums, in PowerPoint, 235

photographs. *See* pictures

Picture Manager, 11

pictures

- applying effects to, 38
- Artistic Effects feature, 36
- borders, 38
- changing size of, 34–35
- editing, 36–39
- in e-mail messages, 263
- file formats for, 33
- inserting, 32
- of presentation slides, 256
- removing backgrounds, 39
- resetting, 38
- resizing, 35
- rotating, 37
- styles, 38

pictures, wrapping text around (Word), 116–117

PivotChart Wizard (Access), 388–389

PivotCharts

- in Access, 388–389
- in Excel, 197

PivotTables

- creating, 196
- PivotCharts and, 197
- table data and, 191
- using, 197
- using slicers with, 198–199

playing audio notes, 349

plus sign (+), 182

portrait orientation, 105

PowerPoint. *See also* presentations

- action, assigning, 229
- animation in, 226–228
- file formats for, 27
- Linked Notes feature and, 353
- overview, 4, 208
- photo albums, creating, 235
- presentation options, 238
- restricting file access in, 410–411
- reusing slides, 219
- SmartArt in, 224
- sound, inserting, 232–233
- tables, creating and inserting, 222–223
- templates, 210
- video
 - applying video styles, 231
 - editing clips, 231
 - inserting from files, 230
 - viewing options, 209
- WordArt in, 225

precedence, in Excel calculations, 182

predefined workbooks, 148

presence icons, 265

presentations. *See also* PowerPoint

- adding content, 214
- annotating slides during, 251
- broadcasting, 258–259
- creating, 210–214
- creating multiple versions of, 248
- custom, 248
- customizing, 211, 246
- deleting narration, 240–241
- dual monitors in, 239
- editing, 216–217, 252
- file formats for, 27
- handouts for, 249
- inserting comments, 247
- options, 238
- packaging, 254–255
- pausing, 243
- photo albums in, 235

presentations, *continued*
recording narration for, 240–241
restricting file access to, 410–411
reviewing, 247
running, 250
saving, 255
saving as video, 257
screensavers and, 239
setting up, 211, 239–246
sharing, 252
slide show settings, 260
slide transitions in, 228, 234
slides. *See* slides
speaker notes, 244–245
templates, 210
themes, 211
timing, 242–243
viewing options, 209
primary key fields, 378
print areas, 168, 169
Print Layout view (Word), 60
Print preview (Word), 61–62
printing
envelopes, 136–137
files to OneNote, 23
mailing labels, 138
PowerPoint handouts, 249
in Publisher, 309, 336–337
speaker notes, in PowerPoint, 245
two-sided in Publisher, 337
program options, adjusting, 398–399
projectors, 239
Protected view, 5
file validation and, 407
publications. *See also* Publisher
adding text, 312–313
business information in, 310, 332
connecting text boxes in, 315
creating from scratch, 310–312
creating page parts in, 330–332
creating using templates, 308–309
designing look of, 311–312

flowing text in, 314–315
grouping objects, 326–327
guides, for positioning objects in, 324
inserting pictures, 318
layering objects, 326–327
modifying pictures, 318–319
positioning objects in, 324–325
printing, 309, 336–337
ready-to-use elements, 323
repeating objects in, 322
reusing content in, 330–332
reviewing with Design Checker, 333–334
saving content to reuse, 330–332
sending as e-mail, 334–335
stacking and grouping objects in,
326–327
tables in, 320–321
text effects in, 317
text objects (text boxes) in, 312–313
text styles, 317
text tweaking in, 316–317
undoing changes to pictures, 319
undoing grouped objects, 327
wrapping text around objects in,
328–329
Publisher. *See also* publications
Building Blocks feature, 323
business information in, 310, 332
creating publications, 308–310
master pages, 322
objects
aligning on page, 324–325
flowing text around, 328–329
overview of, 307–308
positioning on page, 325
repeating, 322
stacking and grouping, 326–327
overview, 4, 305–307
printing in, 309, 336–337
selecting stacked objects, 327
text objects (text boxes), 312–313
publishing slides, 253

Q

queries, 386–387
Query Wizard (Access), 386–387
Quick Access toolbar, 394–395
Quick Contacts feature, 296
Quick Steps feature, 276–277
Quick Styles feature, 84, 85
Quick Tables feature, 99

R

R1C1 reference style, 177
ragged edges of text, 88, 103
ranges of cells, 177
Really Simply Syndication (RSS).
See RSS feeds
recording
audio for presentations, 232–233
audio notes, 348–349
narration, 240–241
records, 363
recovering unsaved files, 412
recto pages, 106
recurring appointments, 287
redoing actions, 19
reference marks (Word), 130–131
relational databases. *See* databases
relational tables. *See* databases
relative cell references, 180, 188
reminders, appointment, 287
removing. *See* deleting
repeating columns and rows, 168–169
Report Wizard (Access), 382
reports, 382–385
research feature, 52
resetting pictures, 319
resizing
pictures, 35
tables, 321

- resolution
 - changing, 239
 - Ribbon and, 6
- restricting files, 410–411
- reviewing co-authored Word file changes, 77
- Ribbon
 - displaying, 13
 - hiding, 12, 13
 - insert tab in, 12
 - keyboard shortcuts and, 28
 - layout and features of, 12
 - minimizing, 12, 13
 - overview, 5
 - screen resolution and, 6
 - tabs, 392
 - tools, adding, 393
- Rich Text format
 - compatibility and, 27
 - in e-mail messages, 274
- right-aligned text (Word), 88
- rotating pictures, 37
- Rotation handles, 37
- rows (Access), 363
- rows (Excel)
 - adding, 158
 - deleting, 159
 - hiding, 160
 - repeating, 168–169
 - revealing hidden, 160
 - setting height, 163
- rows (Word tables)
 - adding, 101
 - deleting, 101
- RSS feeds, 280–281
- ruler guides, 92, 324–326
- rules, formatting, 176

S

safe mode. *See* Protected view
 Save As function, 19

- Save Thumbnail check box, 26
- saving files
 - co-authored Word file changes, 77
 - in earlier formats, 27
 - to earlier Office versions, 31
 - keyboard shortcut for, 19
 - overview, 26
 - PowerPoint presentations, 255
 - setting destination folders for, 402–403
 - setting file formats for, 402–403
- Schedule view, 288
- screen resolution
 - changing, 239
 - Ribbon and, 6
- screensavers, presentations and, 239
- screenshots, 42
- Search feature
 - in Help, 25
 - in OneNote, 349
- section breaks (Word). *See* sections (Word)
- sections (OneNote)
 - applying color to, 343
 - creating, 343
- sections (Word)
 - creating, 110, 114
 - headers and footers and, 115
 - page numbering and, 74–75
 - page orientation and, 110
 - section breaks, 110
- securing Office 2010
 - ActiveX controls and, 416–417
 - add-ins and, 416–417
 - AutoRecover options, 413
 - digital signatures, 411, 414–415
 - file compatibility and, 417
 - file validation, 406–407
 - macros and, 416–417
 - overview, 404
 - password protecting files, 409
 - Protected view settings, 407, 408
 - protection levels on files, 410–411
 - recovering unsaved files, 412
 - restricting permissions, 411
 - Trust Center, 405
- sensitive information, safeguarding, 142
- shadow effect, 317
- shapes
 - applying effects to, 44
 - cropping pictures to, 34–35
 - drawing and inserting, 43
 - formatting, 44
 - in OneNote, 347
- SharePoint
 - for co-authoring, 6, 76
 - saving presentations to, 252, 253
 - SharePoint Workspace, 11
 - slide libraries and, 219, 253
- sharing
 - calendars, 290–292
 - co-authoring documents and, 76
 - e-mail messages with OneNote, 354–355
 - features overview, 6
 - notebooks, 342, 350
 - OneNote notes, 352–353
 - presentations, 252
 - with SharePoint. *See* SharePoint
 - with Windows Live. *See* Windows Live
- shortcut menus
 - displaying, 14, 16
 - keyboard shortcut for, 19
- shortcuts, keyboard. *See* keyboard shortcuts
- Show/Hide tool (formatting), 56, 57
- sidebars and pullquotes, 127
- signatures, digital, 411
- signatures, e-mail, 278–279
- single-line spacing, 19
- 64-bit support
 - in Excel, 148
 - in Office, 5
- sizing
 - pictures, 35
 - tables, 321
- Sizing handles, 35
- slicers, 198–199

- slide libraries, 253
- Slide Master view, 209, 220
- slide presentations. *See* presentations
- Slide Show view, 209
- slide shows. *See* presentations
- Slide Sorter view, 209, 217
- slides. *See also* presentations
 - adding footers to, 218
 - animation effects in, 226–228
 - annotating during presentations, 251
 - backgrounds, 212–213
 - changing content, 216
 - changing order of, 217
 - creating new layouts, 221
 - creating pictures of, 256
 - formatting, 215
 - inserting tables, 222–223
 - modifying default layouts, 220
 - numbering, 218
 - reusing, 219
 - saving in libraries, 253
 - slide transitions, 228, 234
 - SmartArt in, 224
 - themes, 211
 - WordArt in, 225
- SmartArt diagrams
 - compatibility with older file formats, 49
 - creating and inserting, 48–49
 - modifying, 49
- SmartArt feature
 - converting text to, 224
 - inserting into slides, 214
- smartphones, Excel and, 172
- Social Connector. *See* Outlook Social Connector
- social networking, Outlook and. *See* Outlook Social Connector
- sorting
 - alphabetical, 118–119, 192
 - Excel table data, 191
 - Excel worksheet data, 192
 - numerical, 118–119, 192

- Word lists, 119
- Word table data, 118
- sound. *See* audio
- spacing
 - character spacing in Publisher, 316–317
 - character spacing in Word, 82
- spam filters, 264
- sparklines
 - copying, 178
 - creating, 178
 - defined, 147
 - deleting, 179
 - editing, 179
 - overview, 178
 - styles, 178
- speaker notes
 - creating, 244
 - printing, 245
- special effects. *See* effects
- spelling
 - correcting, 71–72
 - dictionaries, 401–402
 - spell checking, 19
 - spelling checker settings, 400
- splitting windows, 200–201
- spreadsheets. *See* worksheets
- status bar, 396
- styles (Word), 82–85
- styles, in pictures, 38
- stylistic sets, 87, 317
- stylized text, 46–47
- subtraction, 182
- SUM function, 181
- summarizing data
 - with PivotTables, 196–197
 - slicers and, 198–199
- synchronous scrolling, 80

T

- table of contents, 134–135
- tables (Access), 368–369

- tables (Excel), 190–191
 - freezing columns and rows in, 200
- tables (PowerPoint), 222–223
- tables (Publisher), 320–321
- tables (Word)
 - adding rows and columns to, 101
 - converting text to, 100
 - creating from scratch, 98
 - deleting rows and columns, 101
 - formatting, 102
 - header rows in, 118
 - insert tabs inside cells, 98
 - modifying appearance of, 99
 - moving to previous cell in, 98
 - predesigned tables, 99
 - sorting data in, 118
 - styles for, 82
- tabs, setting, 93
- tasks (Outlook)
 - assigning to group members, 300
 - attaching and inserting files, 300
 - creating, 298
 - creating task categories, 299
 - formatting, 300
 - inserting pictures and diagrams, 300
 - naming tasks, 298–299
 - opening tasks, 299
 - setting due dates, 298–299
 - task lists, 299
- templates
 - in Access, 364–366
 - in Excel, 148
 - file formats for, 27
 - macro-enabled, 27
 - in PowerPoint, 210
 - in Publisher, 308–309
- text
 - converting to tables (Word), 100
 - fine-tuning in Publisher, 316–317
 - in SmartArt diagrams, 49
 - stylized, 46–47

- translating, 50–51
- wrapping. *See* wrapping text
- text boxes
 - custom, 127
 - predesigned, 127
 - in shapes, 44
- text effects, 317
- text formatting (Word), 94–95
- text objects, 312–313
- text selection methods, 64
- text styles, 317
- themes
 - changing look of, 149
 - in e-mail messages, 274
 - in Excel worksheets, 149
 - in Word, 82, 83
- Themes gallery, 14
- 3-D effects
 - in charts, 176–203
 - in pictures, 38
 - in shapes, 44
- time, inserting, 45
- times of meetings, 294–295
- timing presentations, 242–243
- To-Do Bar, 289
- toolbars, 15
- tools, 15
- ToolTip feature, 54
- Track Changes feature (Word), 78–79
- transition effects, in slides, 228, 234
- translation languages, 50
- trendlines, 203
- troubleshooting formulas, 189–190
- true/false values, 183
- Trust Center
 - categories, 405
 - setting file types in, 406–407
- two-sided documents (Word)
 - mirror indents in, 92
 - setting up, 106

- two-sided printing
 - in Publisher, 337
 - Word page layout and, 104
- typing over text, 63

U

- underline formatting, 19
- undoing actions, 19, 319
- user information, changing, 399

V

- values, 147
- verso pages, 106
- videos
 - adding to OneNote, 349
 - copyright laws and, 230
 - in presentations, 230–231
 - saving presentations as, 257
- View Side By Side tool (Word), 79–80
- viewing options (Word), 80
 - Outline view, 120
- viruses, 273

W

- watermarks, 128–129
- Web Apps
 - Excel, 172
 - OneNote, 355
 - overview, 6
- Web clippings, 350–351
- Web content, clipping, 350–351
- Web Layout view (Word), 60
- Window's color schemes, 396–397
- Windows Live
 - for co-authoring in Word, 76
 - for sharing presentations, 252

- wizards
 - Columns Wizard (Excel), 194
 - Form Wizard (Access), 380
 - Mail Merge Wizard (Word), 141
 - PivotChart Wizard (Access), 388–389
 - Query Wizard (Access), 386–387
 - Report Wizard (Access), 382

Word

- action items in, 125
- adding comments, 62
- attachments, displaying in e-mail, 62
- AutoCorrect feature, 71–72
- citations of sources, 132–133
- co-authoring documents, 76
- columns, 112–113
- comparing documents, 79–80
- copying text, 65
- cover pages, 124
- creating new documents, 56–57, 58–60
- drawing custom text boxes, 127
- editing text, 63
- equations in, 67, 126
- file formats for, 27
- finalizing documents, 142–143
- fonts, 86–87
- footnotes and endnotes, 130–131
- form letters, 140
- formatting. *See* formatting (Word)
- grammar, correcting, 71
- headers and footers, 108–109, 115
- headings, numbering, 122
- hyphenation, 103
- indenting, 92
- ink features in, 62
- line spacing, 89–91
- lines, numbering, 123
- Linked Notes feature and, 352
- lists, 96–97, 119
- mail merge, 139–141
- marking and reviewing changes, 78–79
- moving text, 65
- Navigation Pane, 66–67

Word, *continued*

- numbering pages, 74–75
- Outline view, 120
- overview, 3
- page design, 82
- page layout, 104–107
- page orientation, 110–111
- paragraph alignment, 88–92
- predesigned tables, 99
- predesigned text boxes, 127
- printing envelopes, 136–137
- printing mailing labels, 138
- printing to OneNote notebooks, 353
- reading documents, 62
- replacing text, 68–69
- search options, 67
- section breaks, 110, 114
- selecting and modifying text, 63
- selecting text, 64
- SharePoint Workspace and, 76
- sidebars and pullquotes, 127
- sorting information, 118–119
- spelling, correcting, 70–72
- standard page set up, 104–105
- starting, 56
- styles, 82–83, 84–85
- table of contents, 134–135
- tables, 98–102, 118
- tabs, 93
- templates, 58–60
- themes, 82, 83
- Track Changes feature, 78–79
- typing over text in, 63
- viewing options, 60–61, 80
- watermarks in, 128–129
- window layout/interface for, 54–56
- Windows Live SkyDrive and, 76
- wrapping text, 116–117

- WordArt feature, 225
- WordArt objects
 - changing colors in, 47
 - creating and inserting, 46
 - fine-tuning in, 47
- work area, 396–397
- workbooks. *See also* worksheets
 - defined, 147
 - digitally signing, 415
 - file formats for, 27
 - organizing worksheets in, 164–166
 - predefined, 148
 - safeguarding information in, 160
 - saving, 150
- worksheets. *See also* Excel
 - adding columns and rows, 158
 - basic layout of, 147
 - calculations with functions, 186–187
 - cell references, 147, 177
 - changing order of, 164–165
 - changing tab colors in, 164
 - columns and rows, setting dimensions of, 162–164
 - comments, 170–172
 - copying data in, 156
 - creating subtotals, 194–195
 - cutting data, 156
 - data series, 161
 - deleting, 165
 - deleting cells, 159
 - editing data, 152–153
 - entering data, 148, 150–151
 - filtering data, 193
 - formatting cell dimensions, 162–164
 - formatting numbers, 155
 - freezing columns and rows, 200
 - headers and footers, 167–168

- hiding, 165
- hiding columns and rows, 160
- inserting, 165
- layout, 169–170
- moving data, 156
- naming, 164
- navigating, 151
- organizing, 164–166
- pasting data, 156, 157
- preparing to print, 166–168
- printing, 168–170
- ranges in, 177
- removing subtotals, 195
- replacing data, 152–153, 194
- revealing hidden columns and rows, 160
- reviewing data in, 200–201
- selecting cells, 154
- selecting entire worksheets, 162
- selecting text in, 153
- separating data into columns, 194
- series of calculations, 185–188
- setting margins, 166
- setting page dimensions, 166
- sorting data, 192
- summing data, 184–185
- themes, 149
- unhiding, 165
- viewing multiple sections, 200–201
- wrapping text. *See also* flowing text
 - around clip art, 41
 - around graphics and pictures, 116–117
 - around objects, 328–329
 - around text boxes, 127
 - in Word, 57



XML file formats, 27

About the Author

Katherine Murray has been writing about Microsoft Office since the earliest version was available, way back in the dark ages of DOS. She's excited by many of the new features and enhancements in Office 2010 and loves the collaboration features, translation tools, artistic effects, and "access anywhere" approach that enables users to continue working on Office 2010 files from any point they have Web access. Katherine has published a blog called *BlogOffice* for many years that offers tips and techniques on various Office versions. She is also the author of *Microsoft Word 2010 Plain & Simple*, *First Look Microsoft Office 2010*, and *Microsoft Word 2010 Inside Out*, all from Microsoft Press.